

Excellent Investment Opportunity

GARY DRIVE, BYRAM, MS 39272
99± ACRES IN HINDS COUNTY | \$375,000



Discover the perfect opportunity with this 99± acres of land located on Gary Drive in Byram, Hinds County. This property features mixed hardwoods and a small pond, creating a serene environment that's ideal for a variety of uses. Whether you're an investor looking to develop or someone seeking a private retreat, this land offers endless possibilities. Don't miss out on this unique chance to own a substantial piece of property in a desirable location. Contact Anthony Steen today for more information or to schedule a viewing!



**ANTHONY
STEEN**

REALTOR®

Office: 601.898.2772

Cell: 662.645.5151

Anthony@TomSmithLand.com



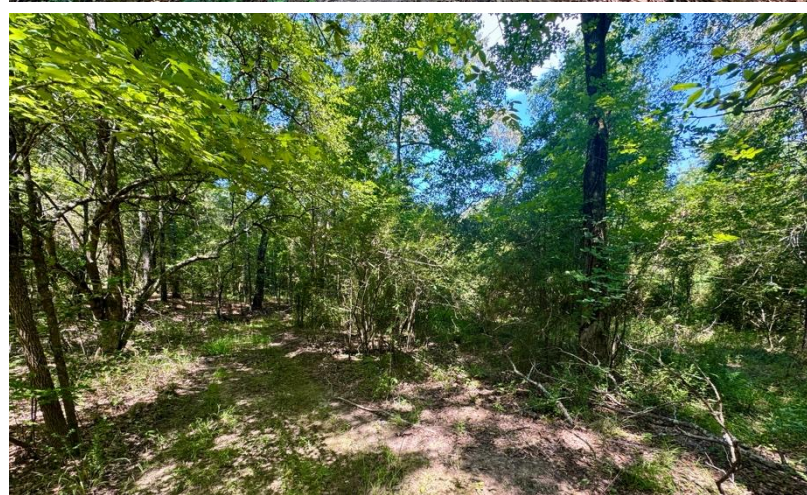
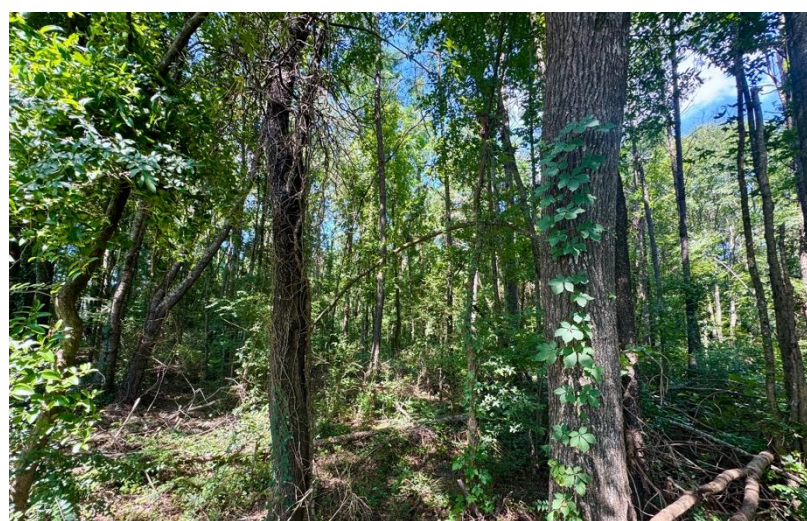
Expect More. Get More.

A Real Estate Expert You Can Trust

TomSmithLandandHomes.com

Information is believed to be accurate but not guaranteed.





A Real Estate Expert *You Can Trust!*

ANTHONY STEEN

REALTOR®

O: 601.898.2772 C: 662.645.5151

Anthony@TomSmithLand.com

TomSmithLandandHomes.com



Expect More. Get More.



Information is believed to be accurate but not guaranteed.



A Real Estate Expert *You Can Trust!*

ANTHONY STEEN
REALTOR®

O: 601.898.2772 C: 662.645.5151

Anthony@TomSmithLand.com

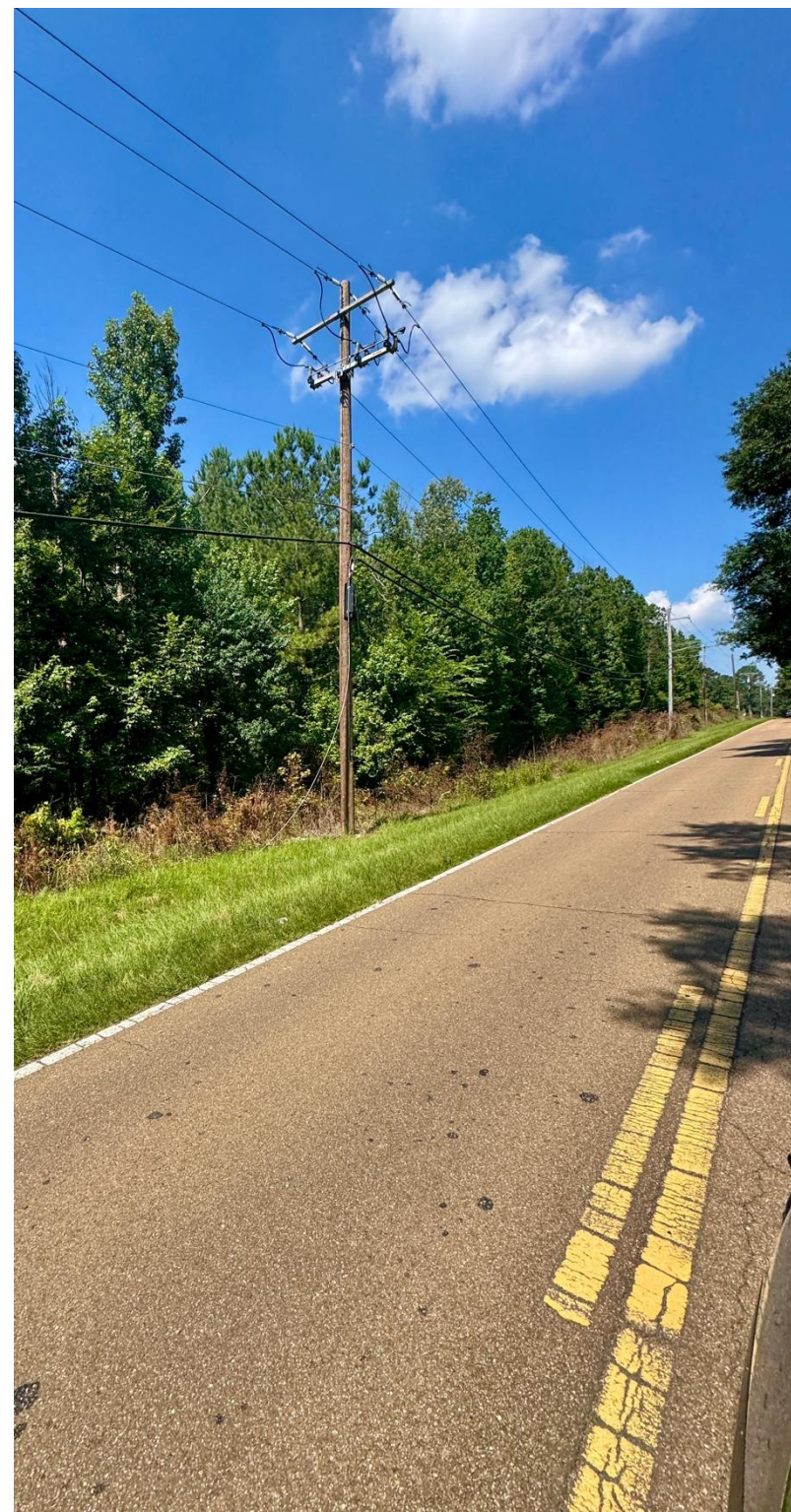
TomSmithLandandHomes.com



Expect More. Get More.



Information is believed to be accurate but not guaranteed.



A Real Estate Expert *You Can Trust!*

ANTHONY STEEN
REALTOR®

O: 601.898.2772 C: 662.645.5151

Anthony@TomSmithLand.com

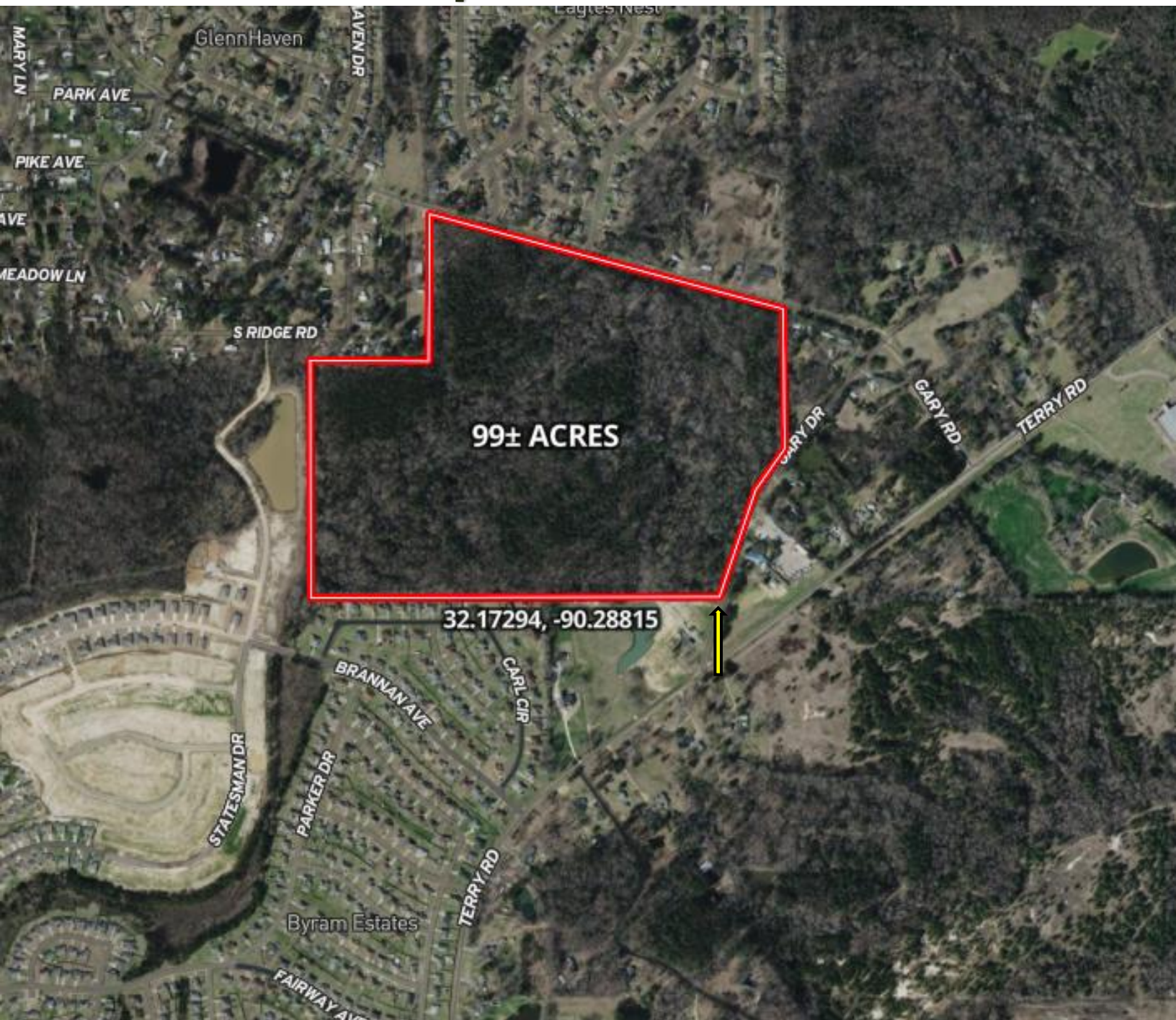
TomSmithLandandHomes.com



Expect More. Get More.



Information is believed to be accurate but not guaranteed.



A Real Estate Expert
You Can Trust!

ANTHONY STEEN

REALTOR®

O: 601.898.2772 C: 662.645.5151

Anthony@TomSmithLand.com

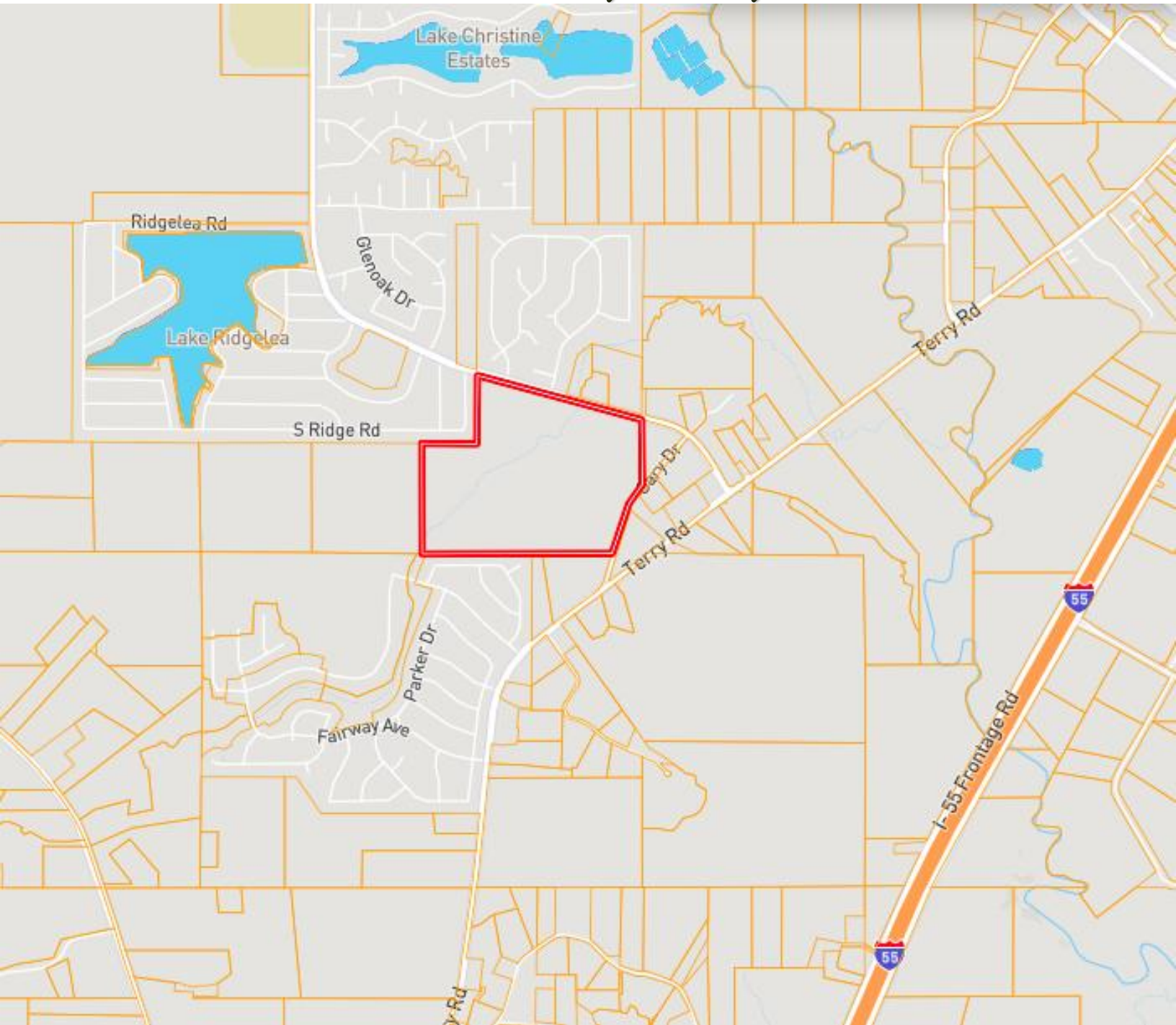
TomSmithLandandHomes.com



Expect More. Get More.



Ownership Map



A Real Estate Expert
You Can Trust!

ANTHONY STEEN
REALTOR®
O: 601.898.2772 C: 662.645.5151
Anthony@TomSmithLand.com
TomSmithLandandHomes.com

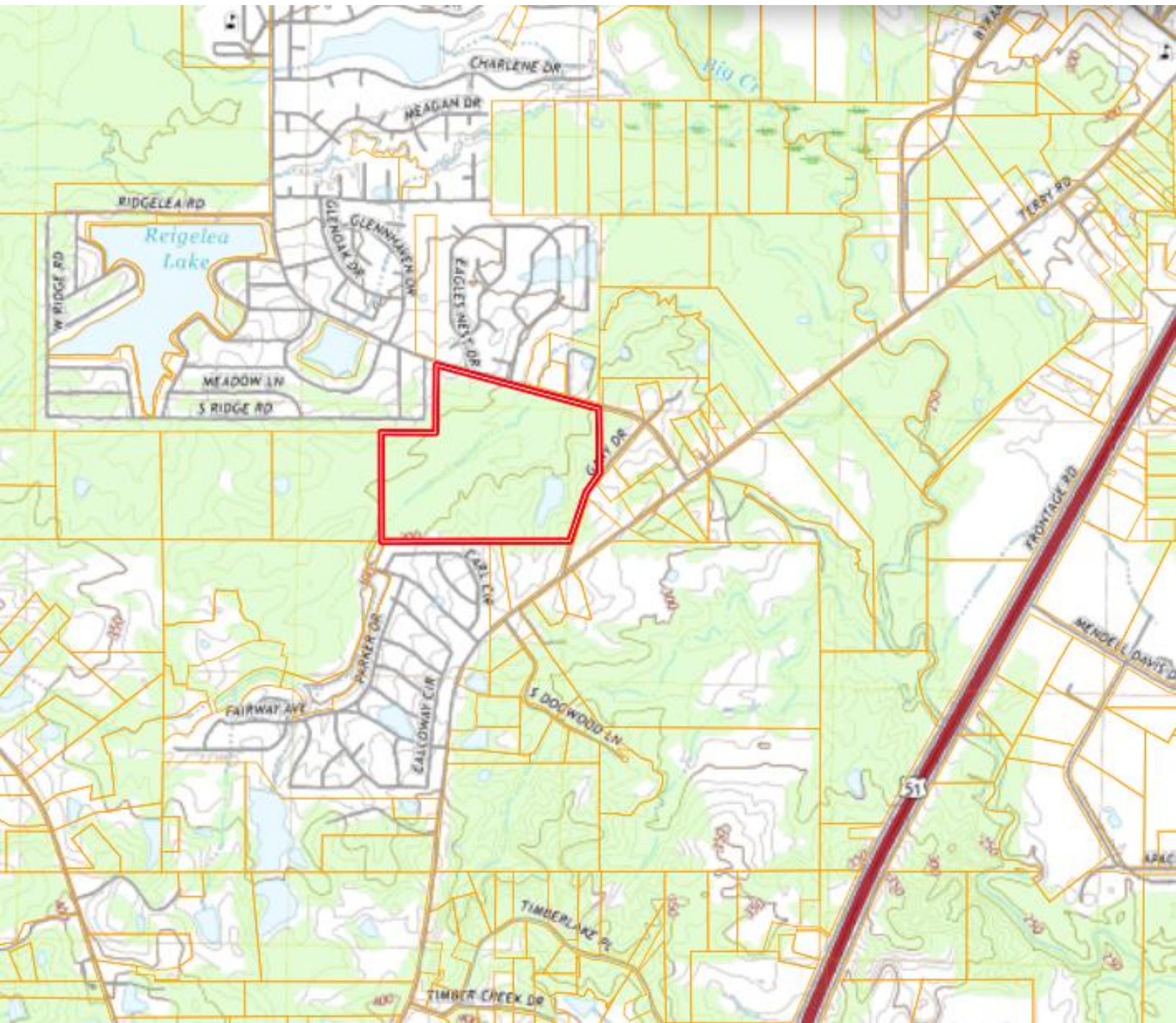


Expect More. Get More.

Information is believed to be accurate but not guaranteed.



Topography Map



**A Real Estate Expert
You Can Trust!**

ANTHONY STEEN
REALTOR®

O: 601.898.2772 C: 662.645.5151

Anthony@TomSmithLand.com

TomSmithLandandHomes.com

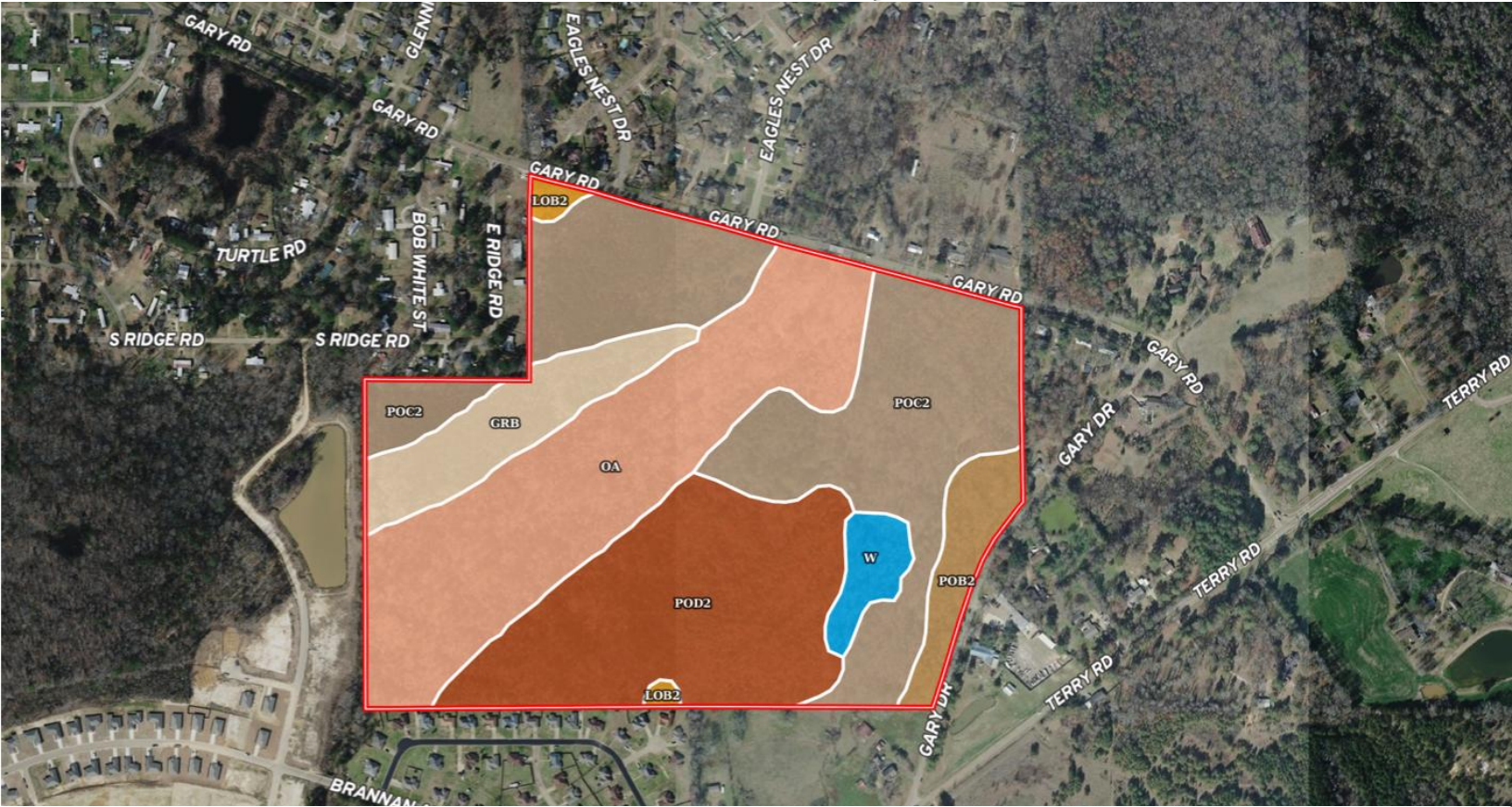


Expect More. Get More.

Information is believed to be accurate but not guaranteed.



Soil Map



SOIL CODE	SOIL DESCRIPTION	ACRES	%	CPI	NCCPI	CAP
PoC2	Providence silt loam, 5 to 8 percent slopes, eroded	33.13	32.9	0	28	3e
Oa	Oaklimer silt loam, 0 to 2 percent slopes, occasionally flooded, north	28.47	28.27	0	74	2w
PoD2	Providence silt loam, 8 to 15 percent slopes, eroded	23.35	23.19	0	48	6e
GrB	Grenada silt loam, 2 to 5 percent slopes	7.79	7.74	0	58	2e
PoB2	Providence silt loam, 2 to 5 percent slopes, eroded	4.43	4.4	0	28	2e
W	Water	2.57	2.55	0	-	-
LoB2	Loring silt loam, 2 to 5 percent slopes, moderately eroded, central	0.95	0.94	0	55	3e
TOTALS		100.69(*)	100%	-	47.5	3.3

A Real Estate Expert
You Can Trust!

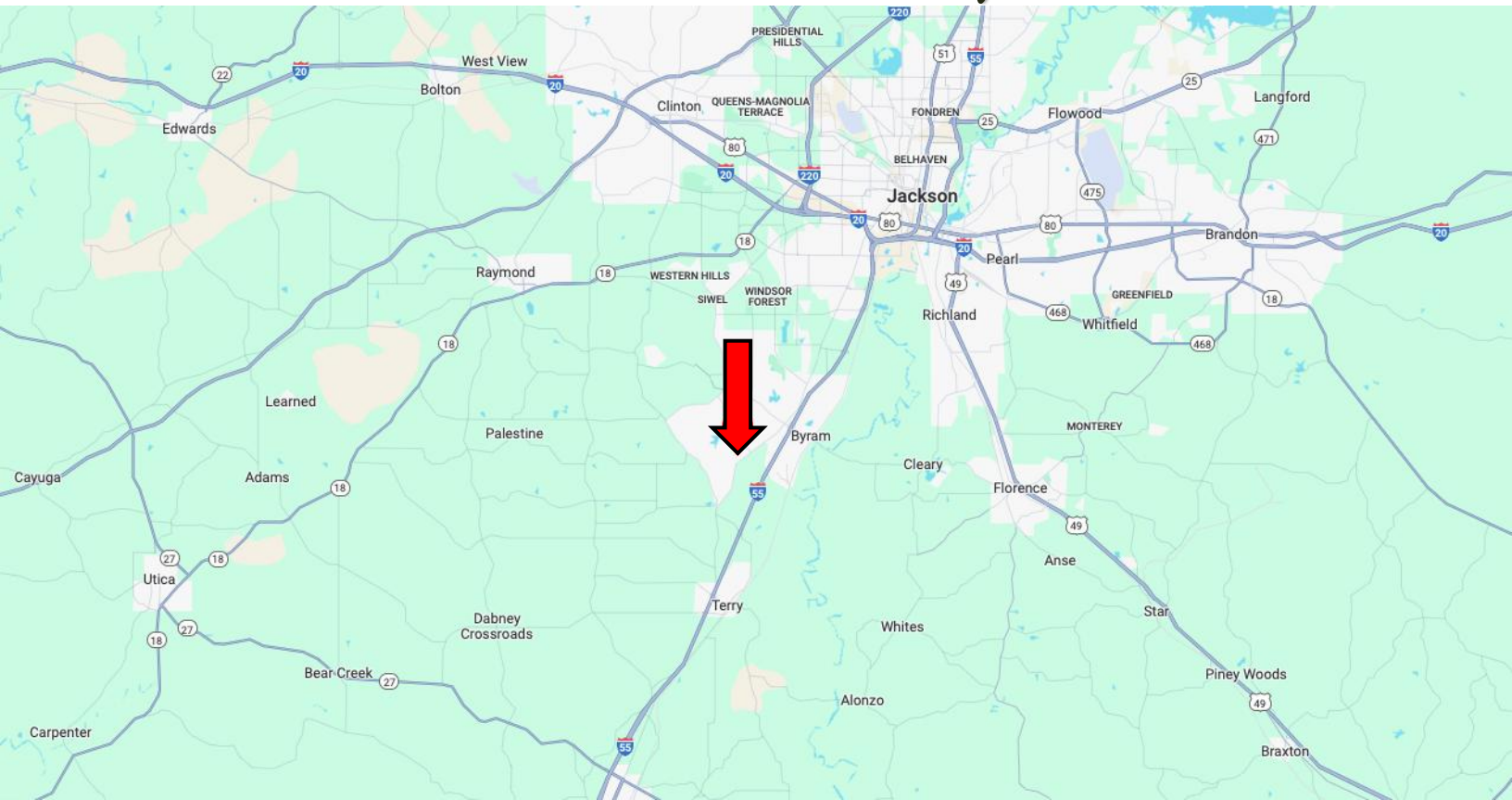
ANTHONY STEEN
REALTOR®
O: 601.898.2772 C: 662.645.5151
Anthony@TomSmithLand.com
TomSmithLandandHomes.com

Tom Smith
LAND AND HOMES
Expect More. Get More.

Information is believed to be accurate but not guaranteed.

LandExpert
2011-2024
BEST
BROKERAGES

Directional Map



Address: Gary Drive, Byram, MS 39272

Directions from US-51 and S Siwell Road, Byram, MS:

Travel Northwest on S Siwell Road for 0.3 miles.

Turn left onto Terry Road for 1.5 miles. Turn right onto Gary Road for 0.2 miles. Turn left onto Gary Drive. After 0.3 miles, the land will be on the right. [**Google Maps Link**](#)



**ANTHONY
STEEN**

REALTOR®

Office: 601.898.2772

Cell: 662.645.5151

Anthony@TomSmithLand.com



Expect More. Get More.

A Real Estate Expert You Can Trust

TomSmithLandandHomes.com

Information is believed to be accurate but not guaranteed.

