

Commercial Property on a Corner Lot 314 N. Chrisman Ave., Cleveland, MS 38732 | \$60,000



Are you looking for a place for your business in Cleveland, MS? This commercial building is 528± SF and is situated on a 0.07± acre corner lot. There is a paved driveway with paved parking is accessible from Chrisman Avenue and First Street, which creates convenience for customers. The building was built in 1951. Call today for more details and to schedule your private showing.



TRACEY BELL
MANAGING BROKER

O: 662.441.2500 | C: 662.719.4720
Tracey@TomSmithLand.com



ABBY ABERNATHY
REALTOR®

O: 662.441.2500 | C: 940.781.3137
Abby@TomSmithLand.com

TomSmithLandandHomes.com

Information is believed to be accurate but not guaranteed.





TRACEY BELL
MANAGING BROKER

O: 662.441.2500 | C: 662.719.4720

Tracey@TomSmithLand.com



ABBY ABERNATHY
REALTOR®

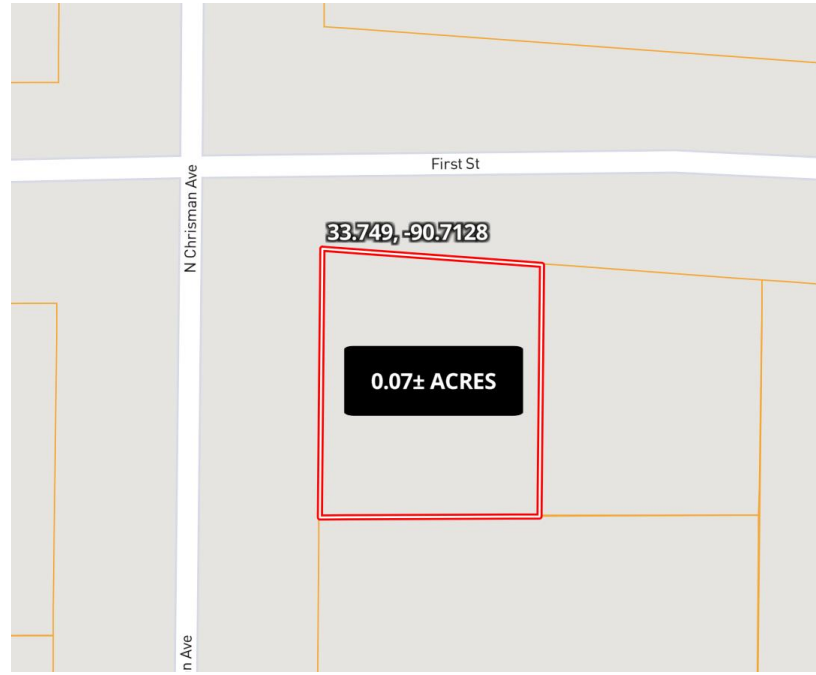
O: 662.441.2500 | C: 940.781.3137

Abby@TomSmithLand.com

TomSmithLandandHomes.com

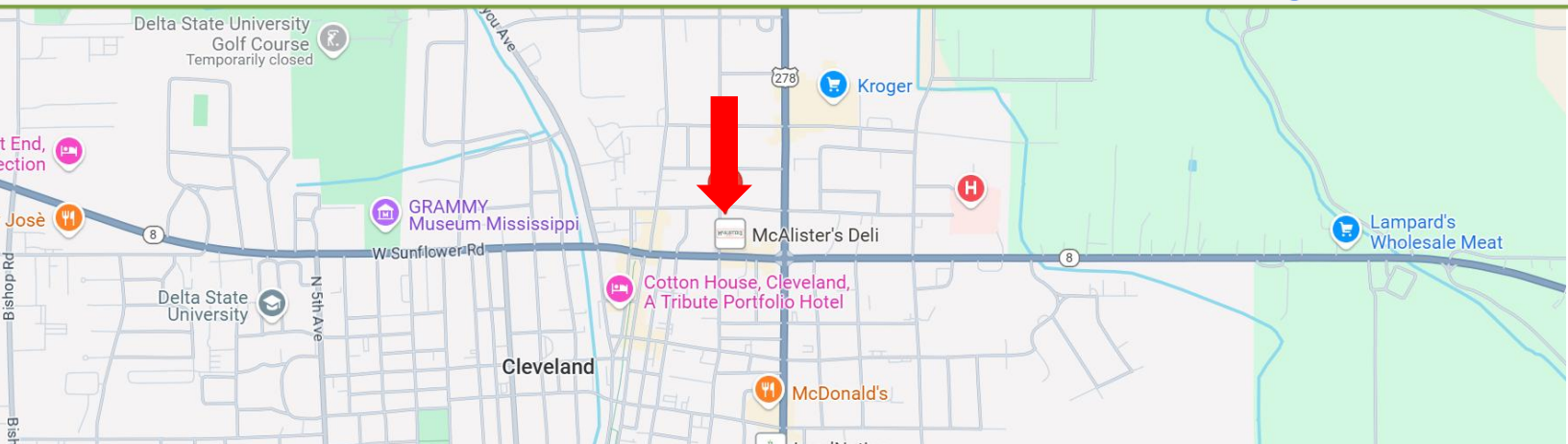
Information is believed to be accurate but not guaranteed.





Directions from Hwy 8 & Hwy 61 in Cleveland: Travel west on Hwy 8 for 0.1 miles, then turn right onto N. Chrisman Avenue. In 0.1 miles, the commercial property will be on your right.

Address: 314 N. Chrisman Avenue, Cleveland, MS 38732 [Google Maps](#) [Link](#)



TRACEY BELL
MANAGING BROKER

O: 662.441.2500 | C: 662.719.4720
Tracey@TomSmithLand.com



Expect More. Get More.



ABBY ABERNATHY
REALTOR®

O: 662.441.2500 | C: 940.781.3137
Abby@TomSmithLand.com