

# Hunting • Recreation • Homesite

## 105± Acres in Winston County, MS



**\$191,625**

Are you looking for a great recreational tract that offers excellent hunting? Well, here it is! 105± acres in Nanih Waiya, Winston County, MS! Part of this tract was clear cut in 2016, and the remaining acreage is hardwood bottomland and sloughs. There is an internal road system throughout, giving you access to most areas of the property. There is also a nice cabin or home site with water and power available nearby. This property features over 600 feet of road frontage on Highway 397 with multiple points of access. This tract is 22 minutes from Louisville, 15 minutes from Noxapater, and 26 minutes from Philadelphia. Call Walker or Tyler for your private showing today!



**WALKER TRANUM**  
MANAGING BROKER

O: 662.268.6333 | C: 662.769.1442  
[Walker@TomSmithHomes.com](mailto:Walker@TomSmithHomes.com)



**TYLER KILGORE**  
REALTOR®

O: 662.268.6333 | C: 601.562.0688  
[Tyler@TomSmithLand.com](mailto:Tyler@TomSmithLand.com)

**TomSmithLandandHomes.com**

Information is believed to be accurate but not guaranteed.





**WALKER TRANUM**  
MANAGING BROKER

O: 662.268.6333 | C: 662.769.1442  
Walker@TomSmithHomes.com



**TYLER KILGORE**  
REALTOR®

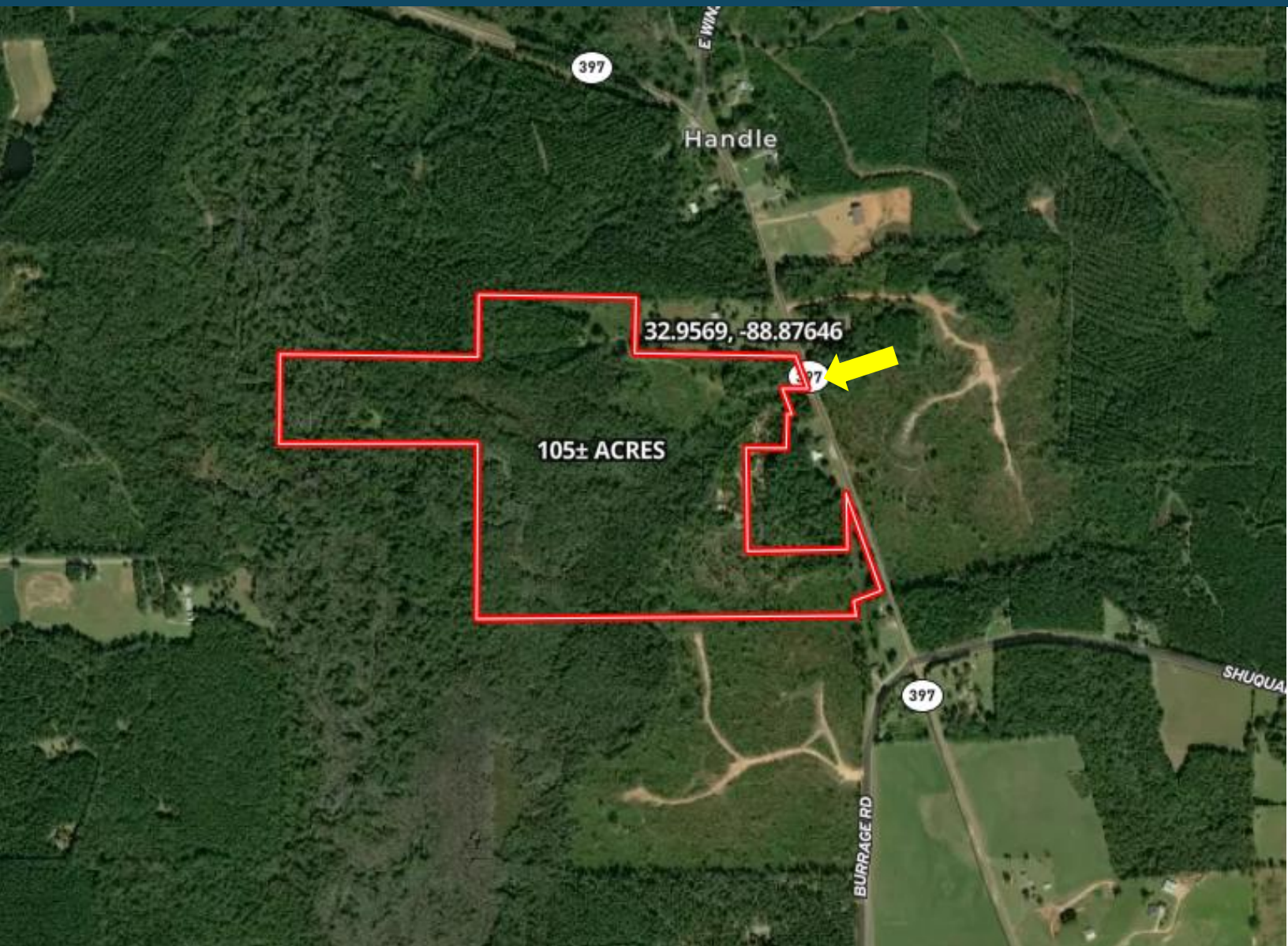
O: 662.268.6333 | C: 601.562.0688  
Tyler@TomSmithLand.com

**TomSmithLandandHomes.com**

Information is believed to be accurate but not guaranteed.



# Aerial Map



[Click Here for Interactive Map](#)

**WALKER TRANUM**  
MANAGING BROKER

O: 662.268.6333 | C: 662.769.1442  
Walker@TomSmithHomes.com



**TYLER KILGORE**  
REALTOR®

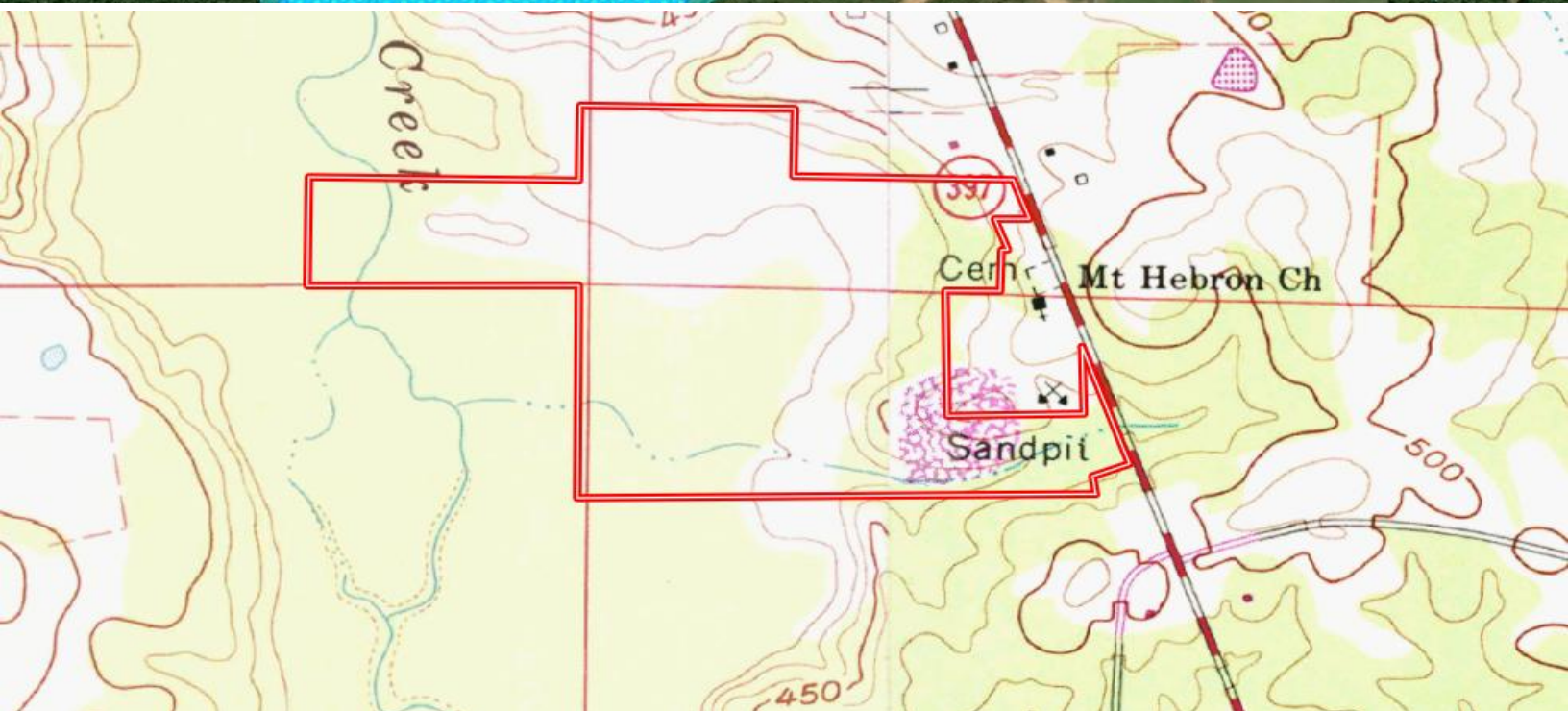
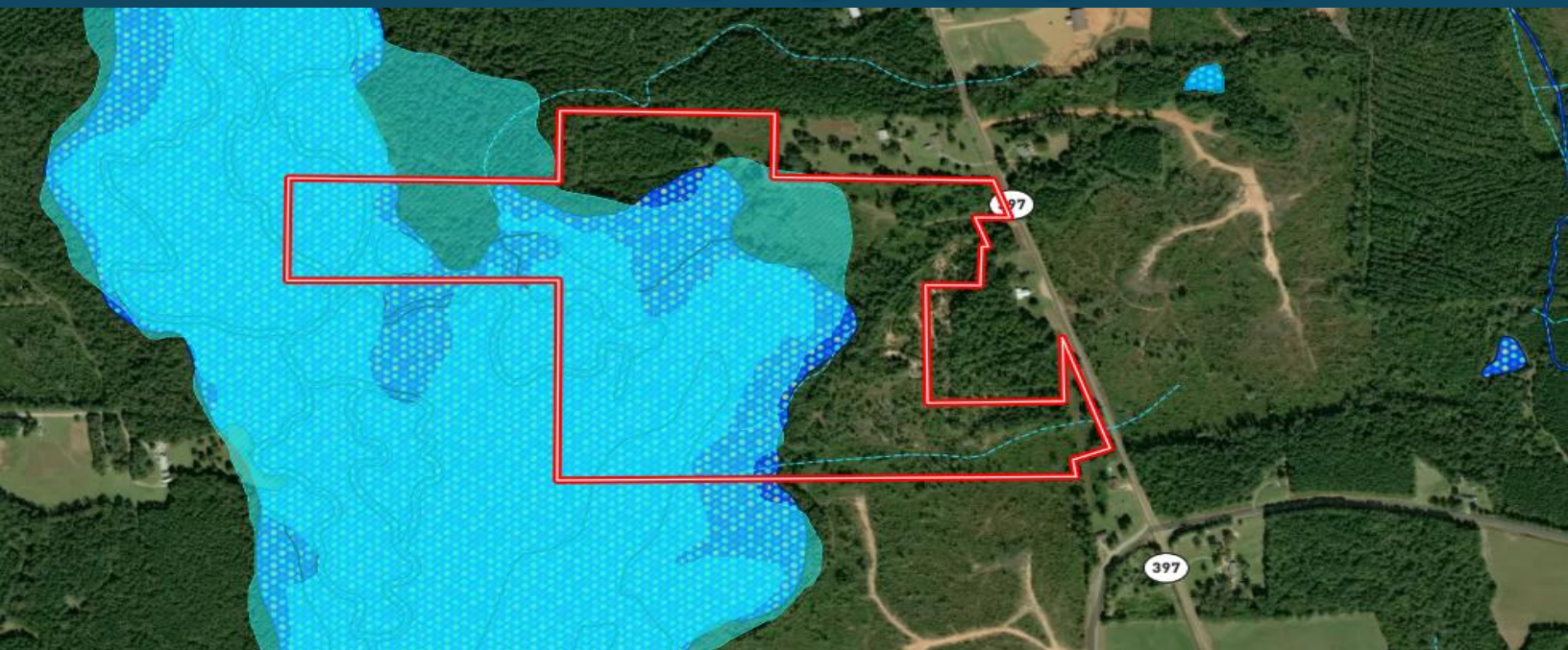
O: 662.268.6333 | C: 601.562.0688  
Tyler@TomSmithLand.com

**TomSmithLandandHomes.com**

Information is believed to be accurate but not guaranteed.



# Flood | Topography Map



**WALKER TRANUM**  
MANAGING BROKER

O: 662.268.6333 | C: 662.769.1442  
Walker@TomSmithHomes.com



**TYLER KILGORE**  
REALTOR®

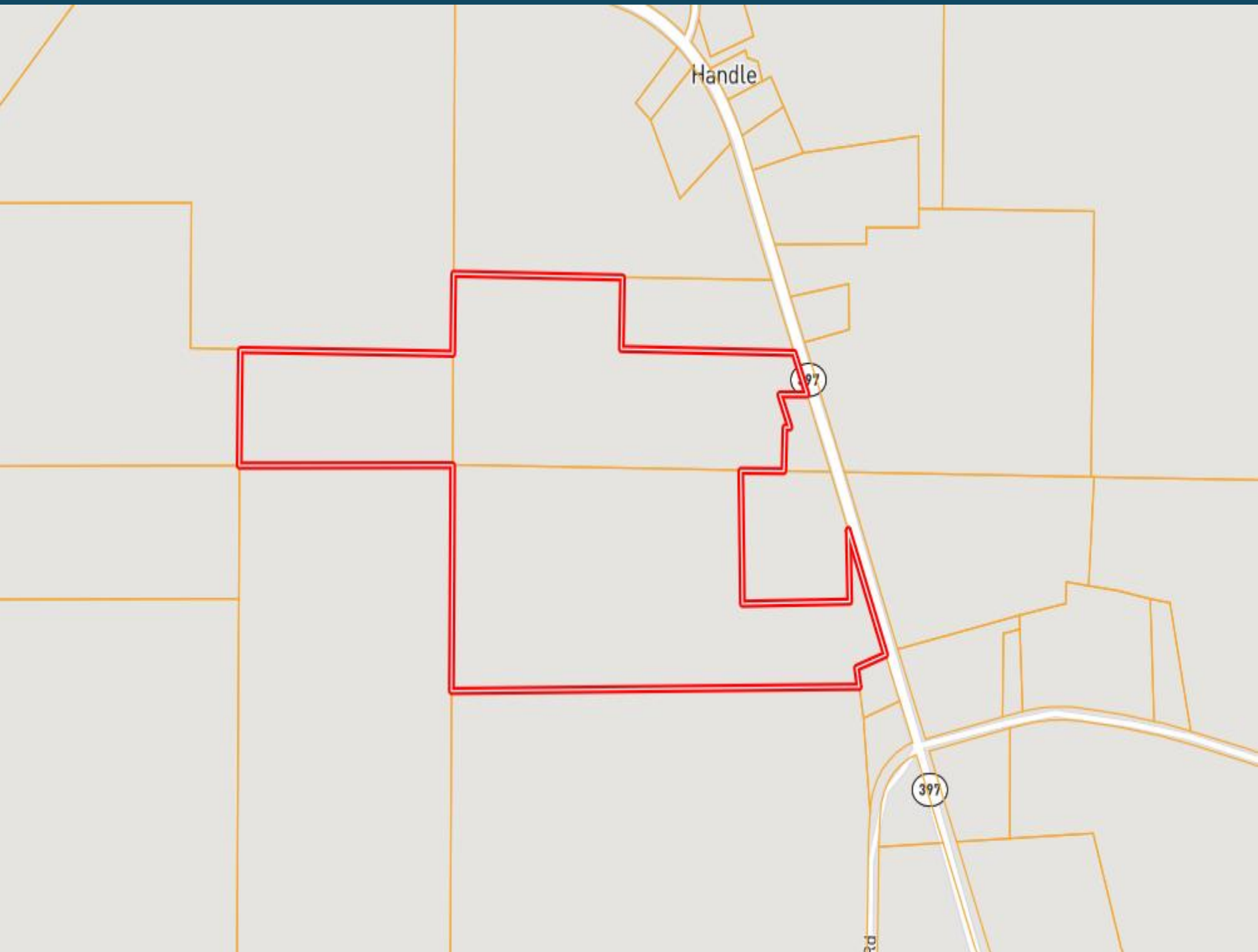
O: 662.268.6333 | C: 601.562.0688  
Tyler@TomSmithLand.com

**TomSmithLandandHomes.com**

Information is believed to be accurate but not guaranteed.



# Ownership Map



**WALKER TRANUM**  
MANAGING BROKER

O: 662.268.6333 | C: 662.769.1442  
[Walker@TomSmithHomes.com](mailto:Walker@TomSmithHomes.com)

**TYLER KILGORE**  
REALTOR®

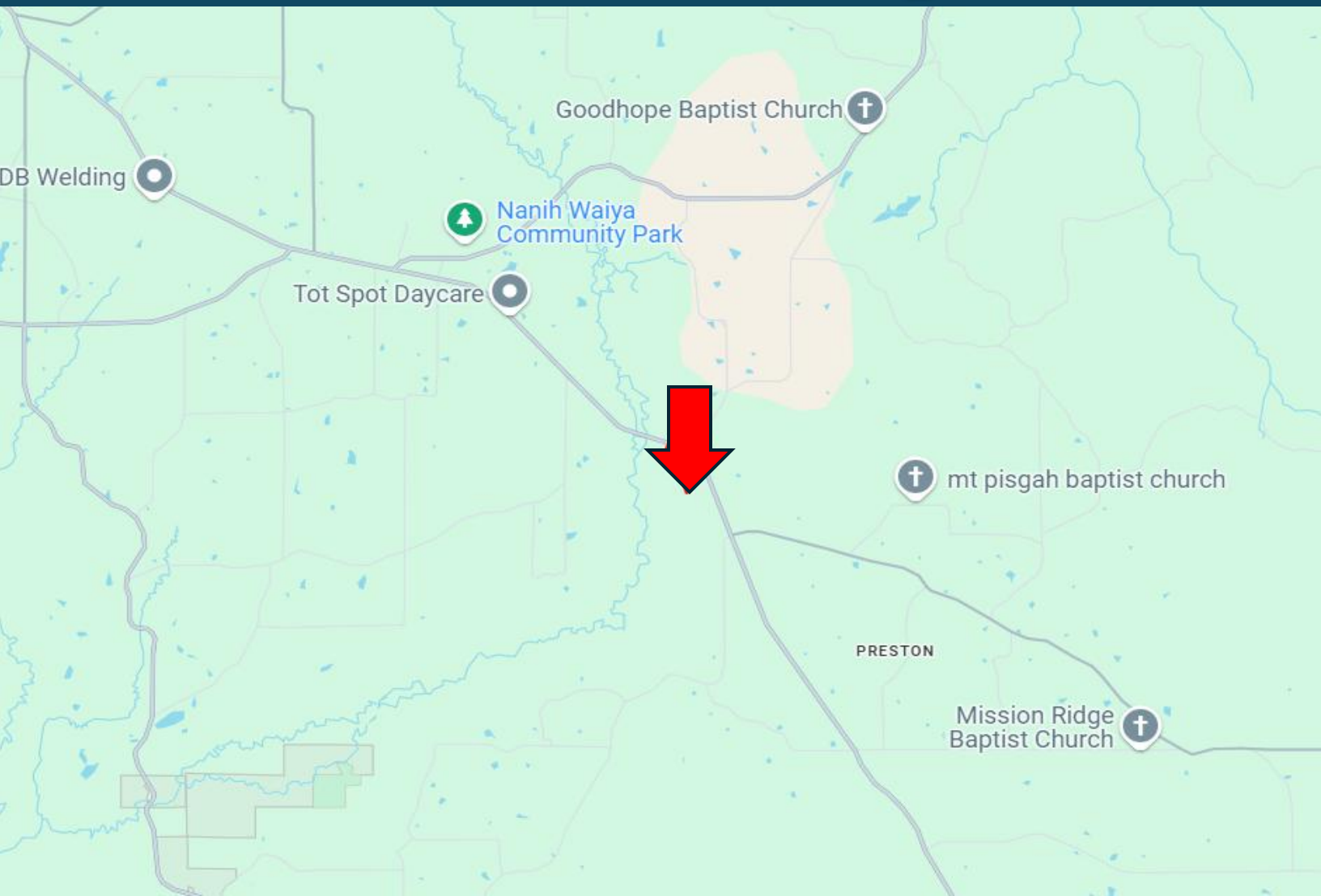
O: 662.268.6333 | C: 601.562.0688  
[Tyler@TomSmithLand.com](mailto:Tyler@TomSmithLand.com)

**TomSmithLandandHomes.com**

Information is believed to be accurate but not guaranteed.



# Directional Map



**Directions from MS-490 in Louisville, MS:** Travel southwest on MS-490 toward MS-397 S for 39ft. Turn left onto MS-397 S for 3.2mi. The property will be on your right. [Google Map Link](#)



**WALKER TRANUM**  
MANAGING BROKER

O: 662.268.6333 | C: 662.769.1442  
[Walker@TomSmithHomes.com](mailto:Walker@TomSmithHomes.com)



Expect More. Get More.



**TYLER KILGORE**  
REALTOR®

O: 662.268.6333 | C: 601.562.0688  
[Tyler@TomSmithLand.com](mailto:Tyler@TomSmithLand.com)

**TomSmithLandandHomes.com**

Information is believed to be accurate but not guaranteed.

