

Commercial Lot in Cleveland, Bolivar County, MS | \$55,000

This property consists of two parcels totaling 0.2± acres. It is located on North Street, just a block away from downtown. If you are looking for a spot to build your business, call today!! Call Tracey Bell for more information.



**TRACEY
BELL**

MANAGING BROKER

Office: 662.441.2500

Cell: 662.719.4720

Tracey@TomSmithLand.com



Expect More. Get More.

A Real Estate Expert You Can Trust

TomSmithLandandHomes.com

Information is believed to be accurate but not guaranteed.





A Real Estate Expert *You Can Trust!*

TRACEY BELL

MANAGING BROKER

O: 662.441.2500 C: 662.719.4720

Tracey@TomSmithLand.com

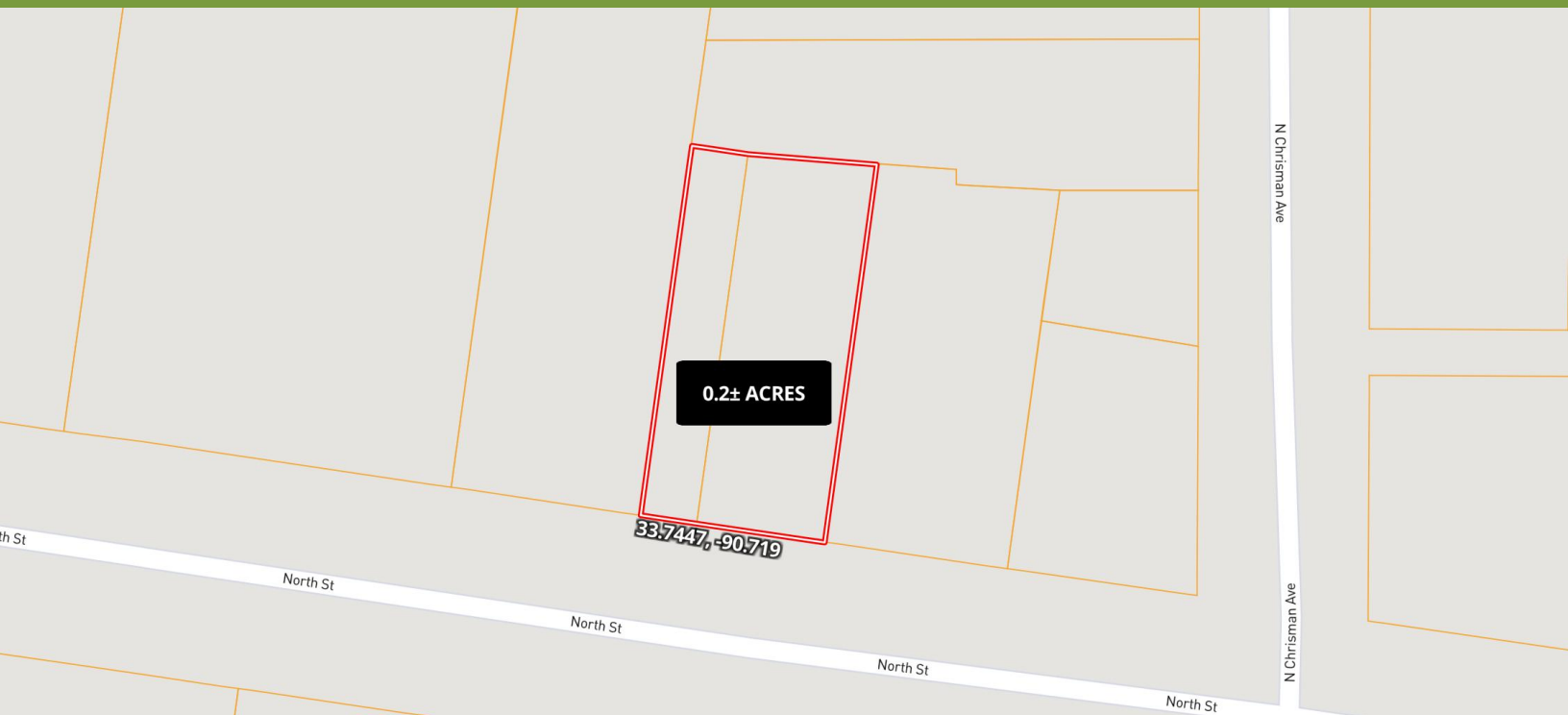
TomSmithLandandHomes.com



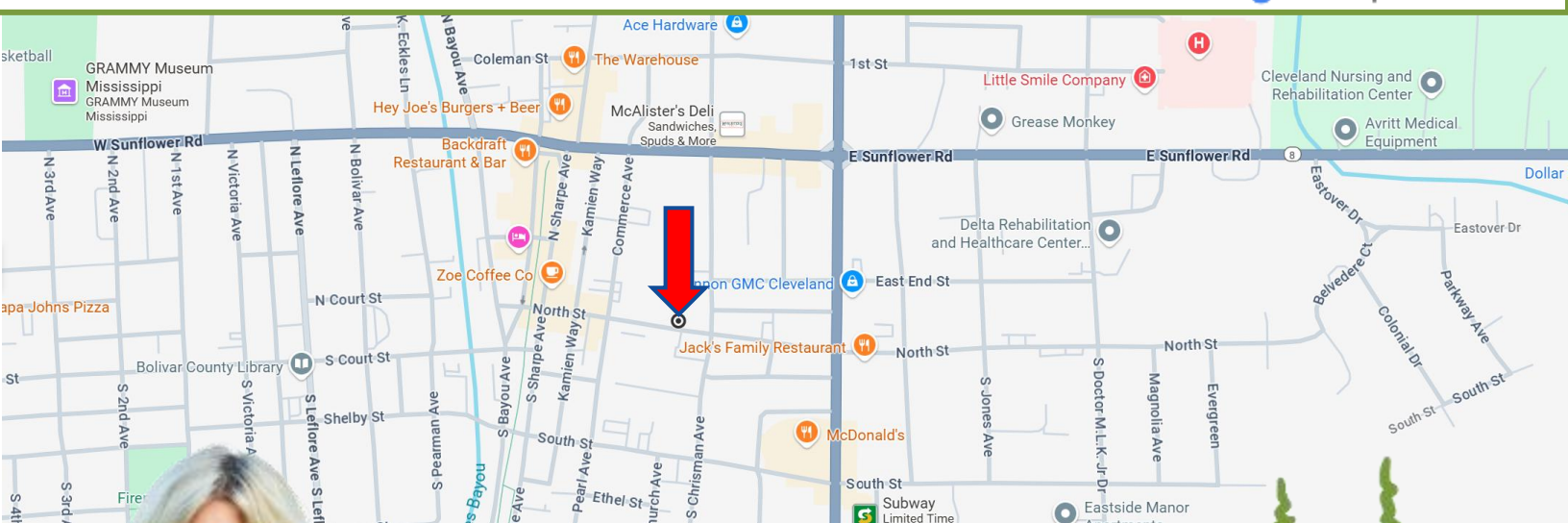
Expect More. Get More.

Information is believed to be accurate but not guaranteed.





Directions from Hwy 8 & Hwy 61 in Cleveland: Travel south on HWY 61 for 0.2 miles. Turn right onto North Street, and the property will be on the right in 0.2 miles. [Google Maps Link](#)



TRACEY BELL
MANAGING BROKER
Office: 662.441.2500
Cell: 662.719.4720
Tracey@TomSmithLand.com



A Real Estate Expert You Can Trust
TomSmithLandandHomes.com

Information is believed to be accurate but not guaranteed.

