

Spacious Home with Two Shops on 9.83± Acres in Bolivar County
496 Cleveland Crossing Road, Cleveland, MS
\$565,000



Just outside Cleveland, this 2,900± SF brick home, built in 2007, sits on a 9.83± acre lot in Bolivar County and offers a perfect combination of space and functionality. This home has four bedrooms, 2.5 bathrooms, and large walk-in closets and is ideal for family living. The open-concept design throughout the living area makes it perfect for hosting, with a kitchen that boasts stainless steel appliances, granite countertops, and a large island. The living room offers ample built-in storage and opens to a sunroom. Additional features include a new composite shingle roof, a generator, a sprinkler system, and a fenced backyard. The property also has two metal buildings: a 1,200± SF structure with electricity and a 2,500± SF building with electricity, water, and sewer, both on concrete slabs. Call Emerson Lovelace today to schedule your private showing!

A Real Estate Expert
You Can Trust!

EMERSON LOVELACE
REALTOR®

O: 662.441.2500 C: 601.715.3302

Emerson@TomSmithLand.com

TomSmithLandandHomes.com



Expect More. Get More.



Information is believed to be accurate but not guaranteed.



A Real Estate Expert
You Can Trust!

EMERSON LOVELACE

REALTOR®

O: 662.441.2500 C: 601.715.3302

Emerson@TomSmithLand.com

TomSmithLandandHomes.com



Expect More. Get More.



Information is believed to be accurate but not guaranteed.



A Real Estate Expert
You Can Trust!

EMERSON LOVELACE

REALTOR®

O: 662.441.2500 C: 601.715.3302

Emerson@TomSmithLand.com

TomSmithLandandHomes.com

**Tom
Smith
LAND AND
HOMES**

Expect More. Get More.

2011-2024
BEST
BROKERAGES

Information is believed to be accurate but not guaranteed.



A Real Estate Expert
You Can Trust!

EMERSON LOVELACE
REALTOR®

O: 662.441.2500 C: 601.715.3302

Emerson@TomSmithLand.com

TomSmithLandandHomes.com

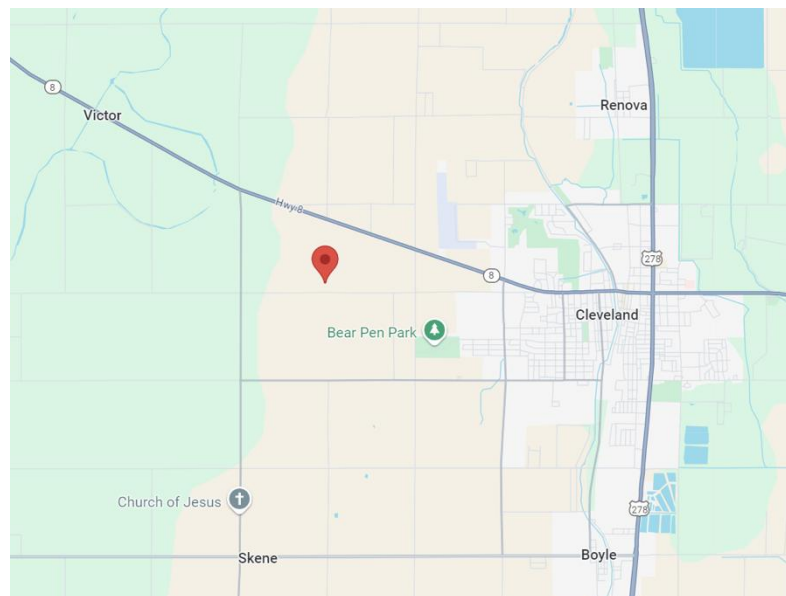
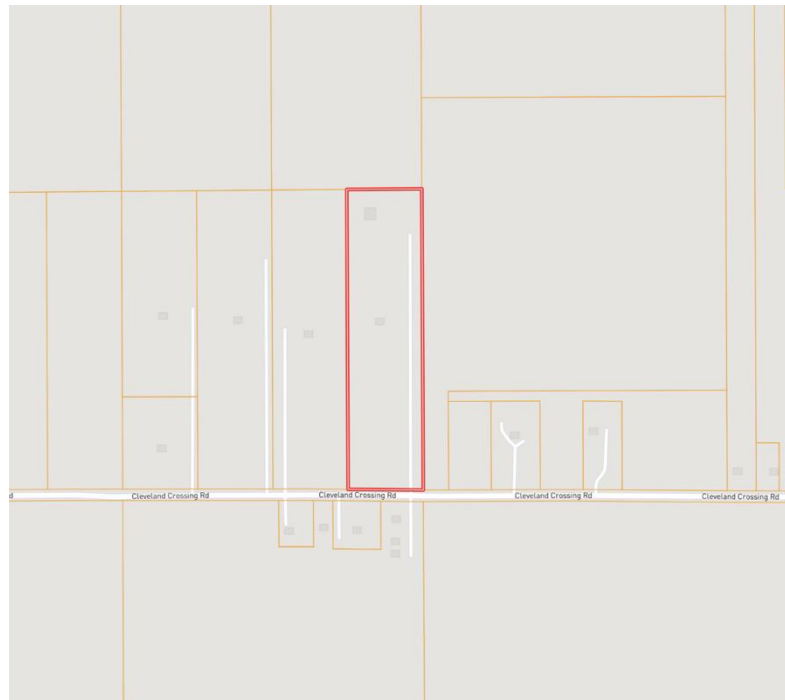
**Tom
Smith
LAND AND
HOMES**

Expect More. Get More.

2011-2024
BEST
BROKERAGES

Information is believed to be accurate but not guaranteed.

MAPS | [Click for Interactive Map](#)



Directions from the Intersection of HWY 61 & HWY 8 in Cleveland: Travel west on HWY 8 for 1.7 miles. Turn left onto Bishop Road, then take a right onto W Sunflower Road. Continue straight onto Cleveland Crossing Road. After 1.4 miles, the home will be on the right.

[Click for Google Maps](#)

Address: 496 Cleveland Crossing Road, Cleveland, MS 38732

A Real Estate Expert
You Can Trust!

EMERSON LOVELACE
REALTOR®

O: 662.441.2500 C: 601.715.3302

Emerson@TomSmithLand.com

TomSmithLandandHomes.com



Expect More. Get More.



Information is believed to be accurate but not guaranteed.