



Commercial Building in Cleveland, Bolivar County, MS | \$165,000

This corner lot features a 5,139± SF building at the intersection of North Street and N. Chrisman Avenue- just a block away from downtown! The building features large windows at the front, offering an excellent opportunity to display merchandise. Behind the building, there is additional space for parking. To learn more about this opportunity, call Tracey Bell today!



**TRACEY
BELL**

MANAGING BROKER

Office: 662.441.2500

Cell: 662.719.4720

Tracey@TomSmithLand.com

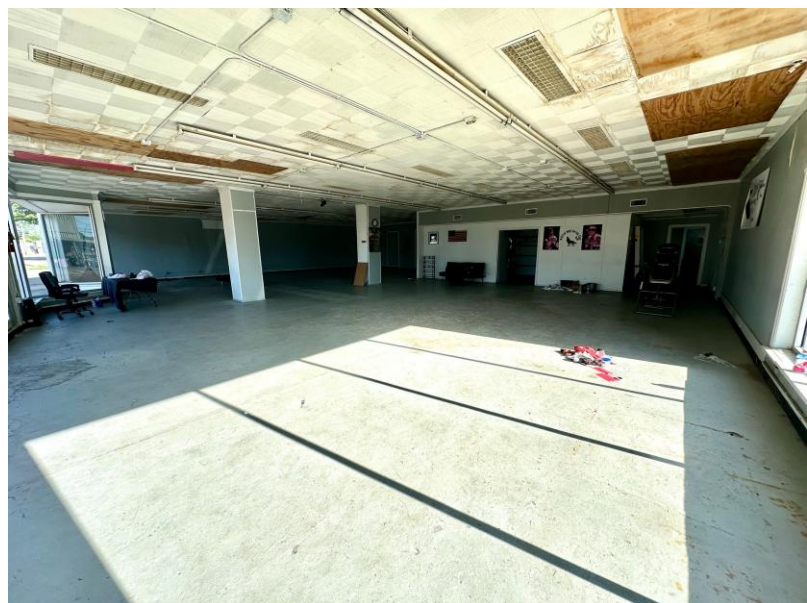
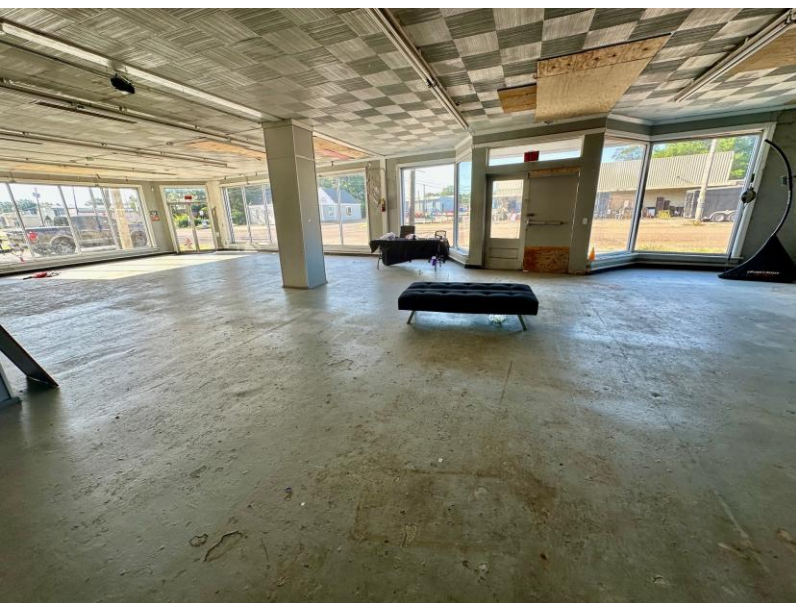


A Real Estate Expert You Can Trust

TomSmithLandandHomes.com

Information is believed to be accurate but not guaranteed.





A Real Estate Expert
You Can Trust!

TRACEY BELL

MANAGING BROKER

O: 662.441.2500 C: 662.719.4720

Tracey@TomSmithLand.com

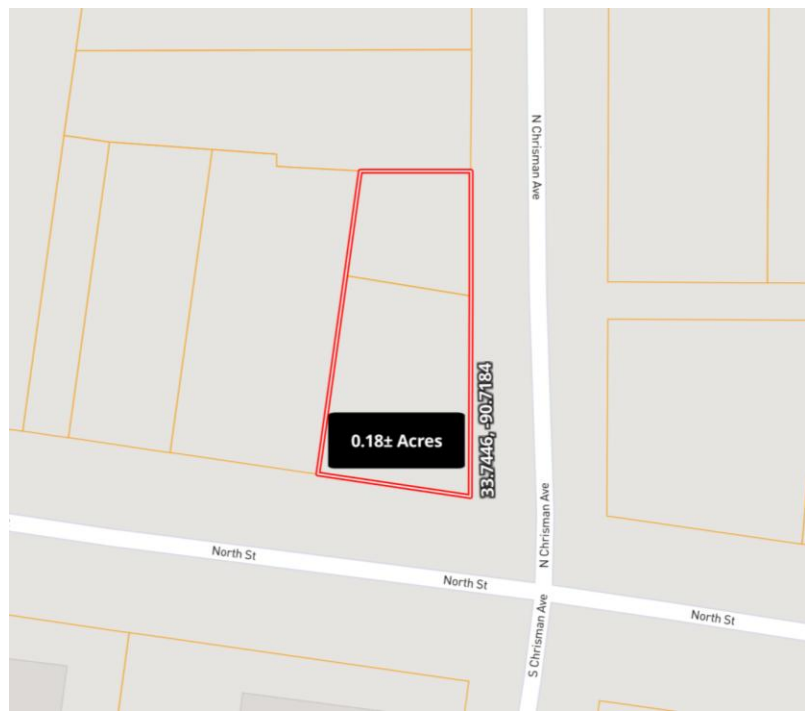
TomSmithLandandHomes.com



Expect More. Get More.

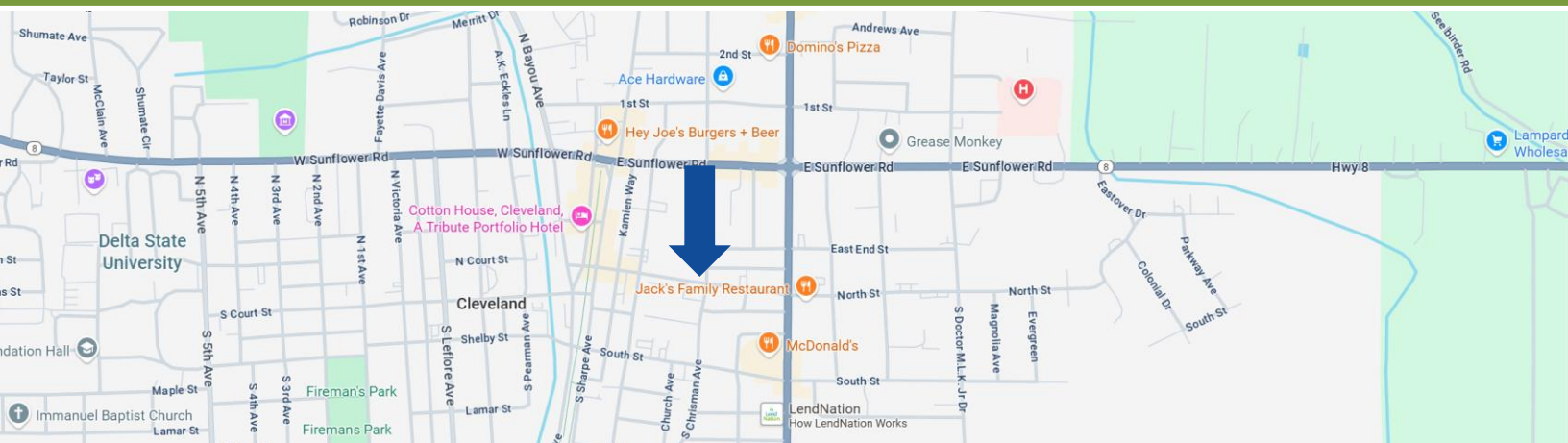


Information is believed to be accurate but not guaranteed.



Directions from Hwy 8 & Hwy 61 in Cleveland: Travel south on HWY 61 for 0.2 miles. Turn right onto North Street, and the property will be on the right in 0.2 miles.

[Google Maps Link](#)



**TRACEY
BELL**

MANAGING BROKER

Office: 662.441.2500

Cell: 662.719.4720

Tracey@TomSmithLand.com



A Real Estate Expert You Can Trust

TomSmithLandandHomes.com

Information is believed to be accurate but not guaranteed.

