

Move-in Ready Home in Coahoma County

855 Friars Point Rd, Clarksdale, MS 38614 | \$165,000



This home is located at 855 Friars Point Road in Clarksdale, Coahoma County. It features three bedrooms and two bathrooms, with a total heated and cooled area of 2,071 square feet. The property includes a one-car carport and a chain-link fenced backyard with two sheds. Inside, you will find a combination of tile and original hardwood floors throughout the house. The kitchen is equipped with plenty of cabinet space, an oven, a refrigerator, a dishwasher, and a cooktop. The living room includes a fireplace and a sliding glass door that leads out to the back patio. Call Anthony Steen today to schedule a viewing!



**ANTHONY
STEEN**

REALTOR®

Office: 601.898.2772

Cell: 662.645.5151

Anthony@TomSmithLand.com



Expect More. Get More.

A Real Estate Expert You Can Trust

TomSmithLandandHomes.com

Information is believed to be accurate but not guaranteed.





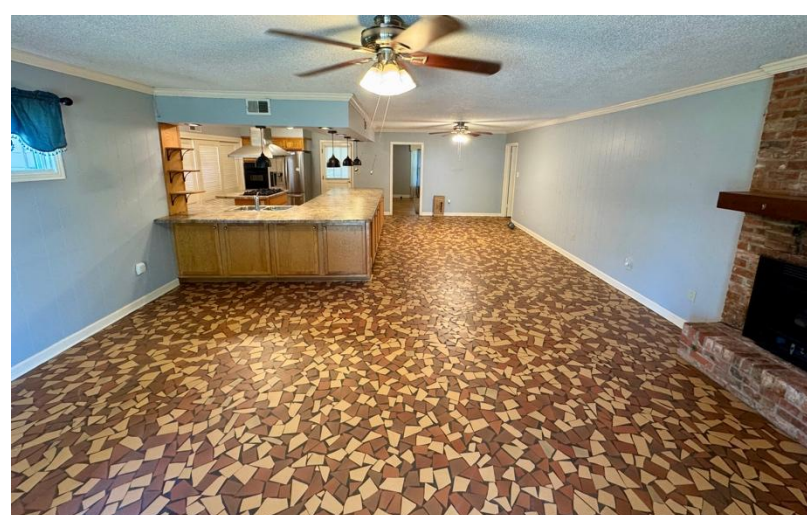
A Real Estate Expert
You Can Trust!

ANTHONY STEEN
REALTOR®
O: 601.898.2772 C: 662.645.5151
Anthony@TomSmithLand.com
TomSmithLandandHomes.com

Tom Smith
LAND AND
HOMES
Expect More. Get More.

LandReport
2011-2024
BEST
BROKERAGES

Information is believed to be accurate but not guaranteed.



A Real Estate Expert
You Can Trust!

ANTHONY STEEN

REALTOR®

O: 601.898.2772 C: 662.645.5151

Anthony@TomSmithLand.com

TomSmithLandandHomes.com

**Tom
Smith
LAND AND
HOMES**

Expect More. Get More.

LandReport
2011-2024
BEST
BROKERAGES

Information is believed to be accurate but not guaranteed.



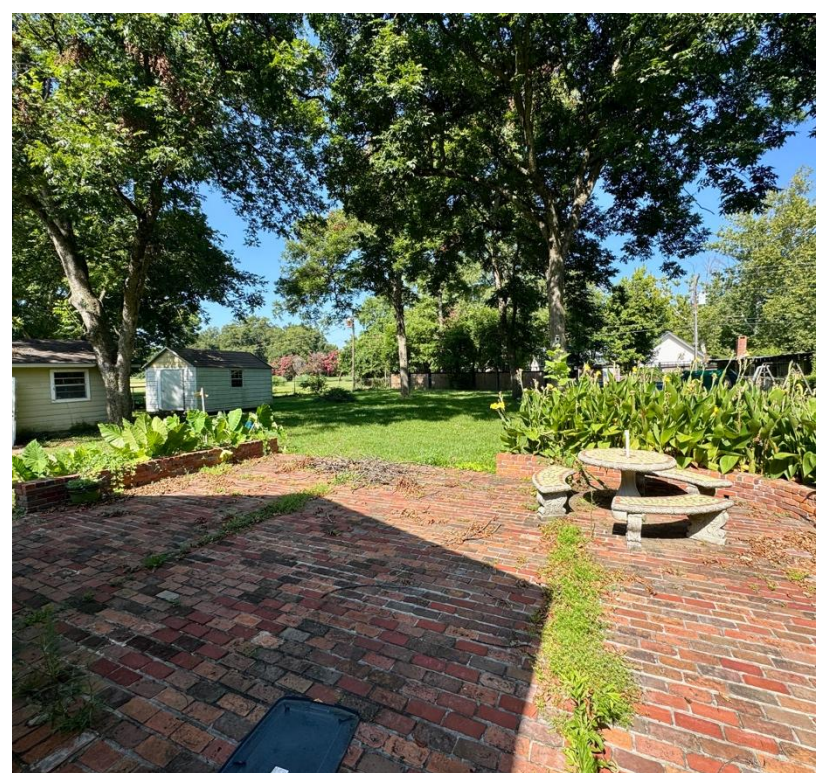
A Real Estate Expert
You Can Trust!

ANTHONY STEEN
REALTOR®
O: 601.898.2772 C: 662.645.5151
Anthony@TomSmithLand.com
TomSmithLandandHomes.com

Tom Smith
LAND AND
HOMES
Expect More. Get More.

LandReport
2011-2024
BEST
BROKERAGES

Information is believed to be accurate but not guaranteed.



A Real Estate Expert
You Can Trust!

ANTHONY STEEN

REALTOR®

O: 601.898.2772 C: 662.645.5151

Anthony@TomSmithLand.com

TomSmithLandandHomes.com



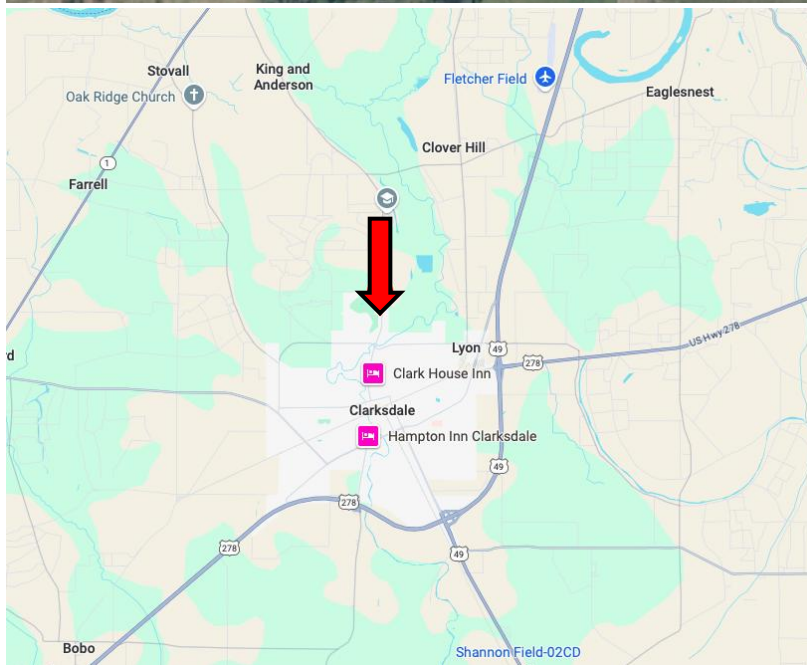
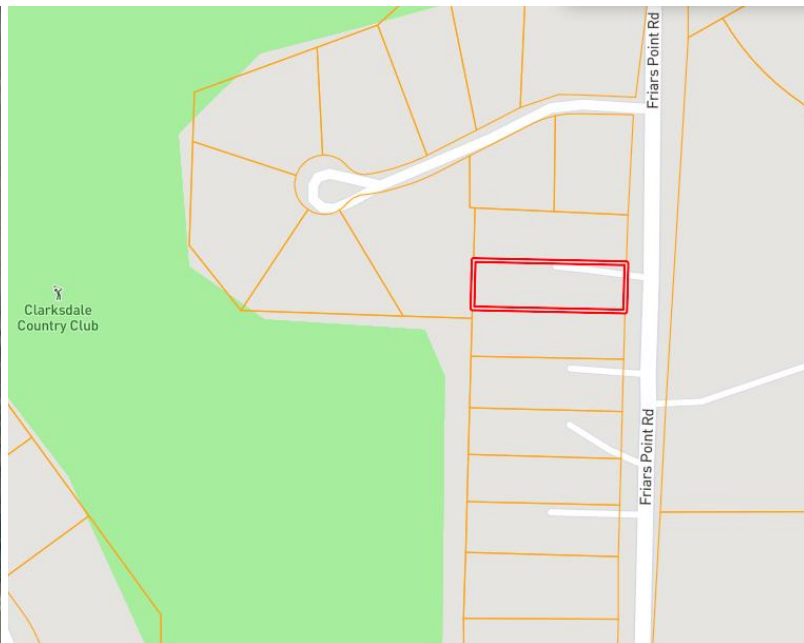
Expect More. Get More.



Information is believed to be accurate but not guaranteed.

MAPS

[Click for the Interactive Map](#)



**Address: 855 Friars Point Road
Clarksdale, MS 38614**

**Directions from MS-6 and Hwy 49,
Lyon, MS:** Travel west on MS-6 W for 0.5 miles.
Turn right onto MS-161 N for 0.6 miles, then
Turn left onto Hopson St for 0.4 miles. Continue
onto E Lee Dr for 1.9 miles. Continue straight
onto Westover Dr for 0.1 miles, then
Turn right onto Ridge Rd for 0.3 miles.
Turn left onto Friars Point Rd. After 0.3 miles,
the house will be on the left.

[Google Maps Link](#)



**ANTHONY
STEEN**
REALTOR®

Office: 601.898.2772

Cell: 662.645.5151

Anthony@TomSmithLand.com



Expect More. Get More.

A Real Estate Expert You Can Trust

TomSmithLandandHomes.com

Information is believed to be accurate but not guaranteed.

