

Move-in Ready Home Pinehurst of Lake Caroline in Madison County



112 Seymour Drive, Madison, MS. 39110 | \$379,500

Move in ready in Lake Caroline | This thoughtfully designed home features a split, open floor plan that perfectly blends spacious common areas with peaceful private retreats. At the heart of the home, you'll find a chef-friendly kitchen complete with a gas oven and range, sleek stainless steel appliances, a stylish breakfast bar, and elegant quartz countertops—ideal for both everyday meals and entertaining guests. The primary suite offers convenience with a master closet that connects directly to the laundry room, streamlining your daily routine. Step outside to the extended patio, featuring a durable aluminum-frame screened-in porch—perfect for relaxing with a book or watching the game. There's also plenty of open space for grilling and outdoor dining. Enjoy a fenced backyard and access to an unbeatable list of community amenities: boating, a clubhouse, tennis courts, fishing, golf, a swimming pool, and a playground. This home offers comfort, convenience, and a lifestyle that feels like vacation every day.

Call Josh Wren TODAY to schedule your private tour and see it for yourself!



**JOSH
WREN**

REALTOR®

Office: 601.898.2772

Cell: 601.497.9440

Josh@TomSmithLand.com



Expect More. Get More.

A Real Estate Expert You Can Trust

TomSmithLandandHomes.com

Information is believed to be accurate but not guaranteed.





**JOSH
WREN**
REALTOR®

Office: 601.898.2772

Cell: 601.497.9440

Josh@TomSmithLand.com



Expect More. Get More.

A Real Estate Expert You Can Trust

TomSmithLandandHomes.com

Information is believed to be accurate but not guaranteed.





**JOSH
WREN**
REALTOR®

Office: 601.898.2772

Cell: 601.497.9440

Josh@TomSmithLand.com



Expect More. Get More.

A Real Estate Expert You Can Trust

TomSmithLandandHomes.com

Information is believed to be accurate but not guaranteed.





**JOSH
WREN**
REALTOR®

Office: 601.898.2772
Cell: 601.497.9440
Josh@TomSmithLand.com



A Real Estate Expert You Can Trust
TomSmithLandandHomes.com

Information is believed to be accurate but not guaranteed.





**JOSH
WREN**

REALTOR®

Office: 601.898.2772

Cell: 601.497.9440

Josh@TomSmithLand.com



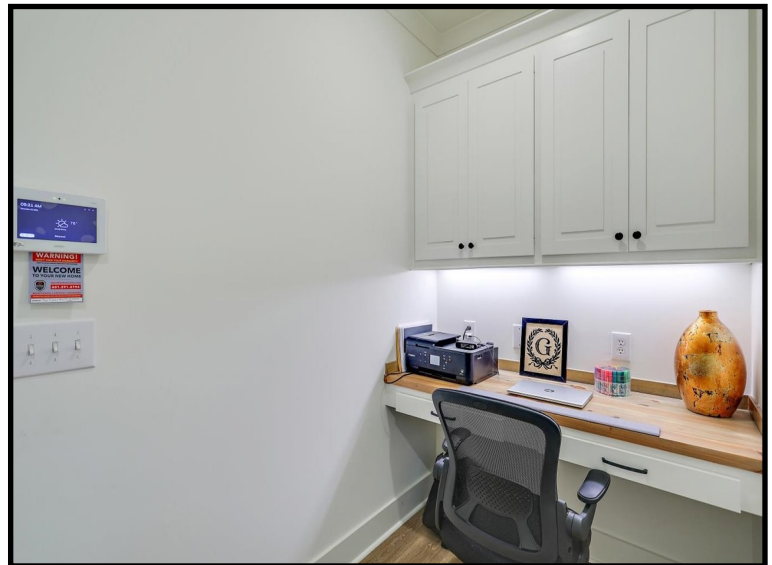
Expect More. Get More.

A Real Estate Expert You Can Trust

TomSmithLandandHomes.com

Information is believed to be accurate but not guaranteed.





**JOSH
WREN**
REALTOR®

Office: 601.898.2772
Cell: 601.497.9440
Josh@TomSmithLand.com



A Real Estate Expert You Can Trust

TomSmithLandandHomes.com

Information is believed to be accurate but not guaranteed.





**JOSH
WREN**
REALTOR®
Office: 601.898.2772
Cell: 601.497.9440
Josh@TomSmithLand.com



A Real Estate Expert You Can Trust
TomSmithLandandHomes.com

Information is believed to be accurate but not guaranteed.





**JOSH
WREN**
REALTOR®
Office: 601.898.2772
Cell: 601.497.9440
Josh@TomSmithLand.com



Expect More. Get More.

A Real Estate Expert You Can Trust
TomSmithLandandHomes.com

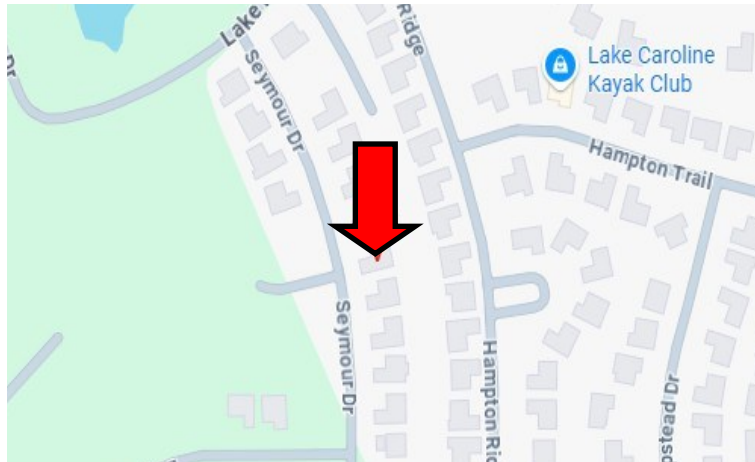
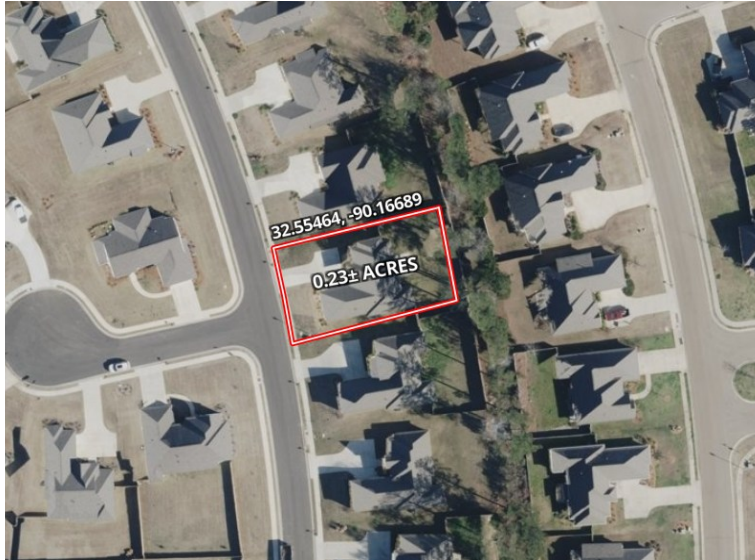
Information is believed to be accurate but not guaranteed.



Maps |



[Click Here for Interactive Google Map](#)



Directions From the intersection of Madison Pkwy and Bozeman Rd in Madison, MS:

Go North on Bozeman Rd for 4.7 miles, turn left on Stribling Rd for 1.5 miles, turn right on Camden Crossing for 1.5 miles, veer right onto Camden Ln for 0.3 miles, turn left on Hampton Crossing for 0.4 miles, 1st roundabout exit onto Springs Crossing for 0.4 miles, turn left on Seymour Drive and 112 Seymour will be located on the right.



[Click Here for LandID Interactive Map](#)



**JOSH
WREN**
REALTOR®

Office: 601.898.2772
Cell: 601.497.9440

Josh@TomSmithLand.com



Expect More. Get More.

A Real Estate Expert You Can Trust

TomSmithLandandHomes.com

Information is believed to be accurate but not guaranteed.

