

42± Acre Farm Tract

Webster County, MS

\$151,200



BRADY
RICHARDSON
REALTOR®

Office: 601.898.2772

Cell: 662.418.8791

Brady@TomSmithLand.com



Expect More. Get More.

A Real Estate Expert You Can Trust

TomSmithLandandHomes.com

Information is believed to be accurate but not guaranteed.





This 42± acre tract is an excellent opportunity for those seeking productive agricultural land. With flat to gently rolling terrain this property is well-suited for row crop farming. The land has been maintained for agricultural use and offers a clean slate for anyone looking to expand their footprint in agriculture. Access is convenient with county road frontage, and the property is situated just minutes from Eupora. Whether you're a local grower or an investor looking for income-producing farmland, this tract is a great addition to any land portfolio. Don't miss your chance to own a manageable-sized piece of tillable acreage in the heart of Webster County. Call Brady to schedule your private tour today!



**BRADY
RICHARDSON**
REALTOR®

Office: 601.898.2772

Cell: 662.418.8791

Brady@TomSmithLand.com



Expect More. Get More.

A Real Estate Expert You Can Trust

TomSmithLandandHomes.com



Information is believed to be accurate but not guaranteed.



**BRADY
RICHARDSON**
REALTOR®

Office: 601.898.2772

Cell: 662.418.8791

Brady@TomSmithLand.com



Expect More. Get More.

A Real Estate Expert You Can Trust

TomSmithLandandHomes.com

Information is believed to be accurate but not guaranteed.





**BRADY
RICHARDSON**
REALTOR®

Office: 601.898.2772

Cell: 662.418.8791

Brady@TomSmithLand.com



Expect More. Get More.

A Real Estate Expert You Can Trust

TomSmithLandandHomes.com

Information is believed to be accurate but not guaranteed.



Aerial Map



[Interactive Map Link](#)



BRADY
RICHARDSON
REALTOR®

Office: 601.898.2772

Cell: 662.418.8791

Brady@TomSmithLand.com



Expect More. Get More.

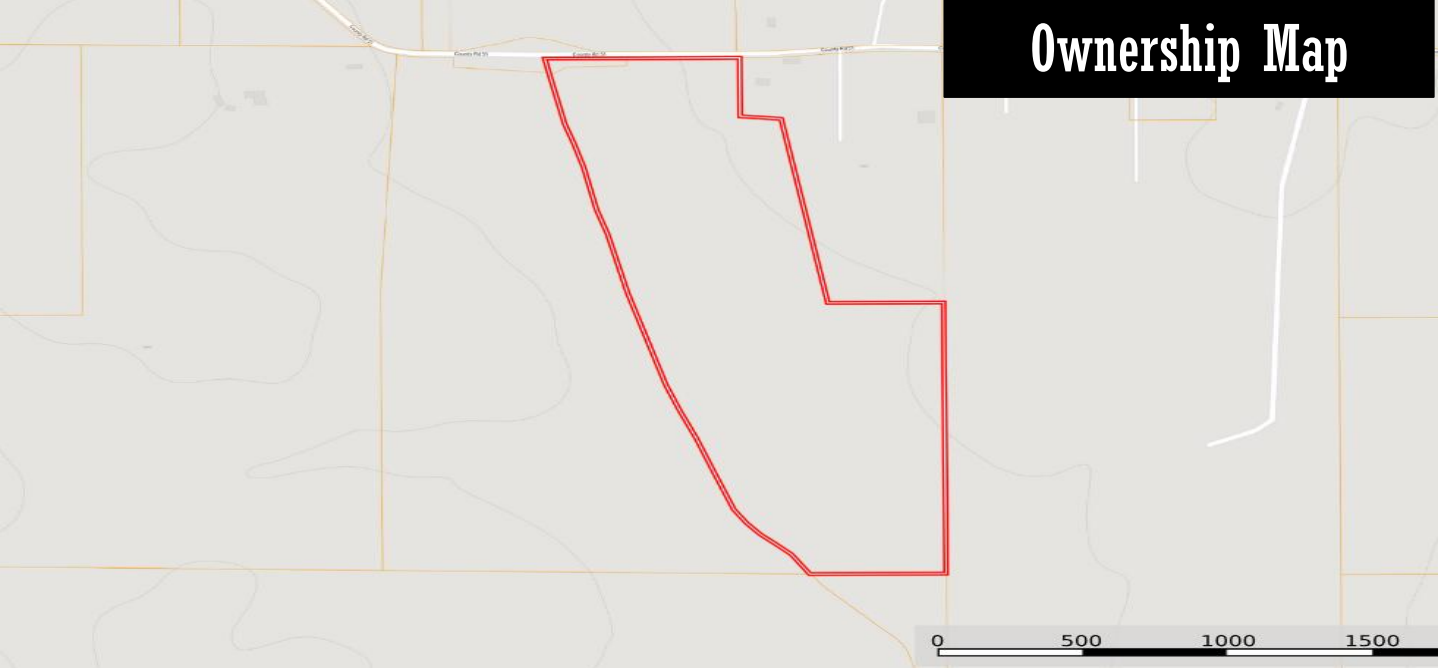
A Real Estate Expert You Can Trust

TomSmithLandandHomes.com

Information is believed to be accurate but not guaranteed.



Ownership Map



Topo Map



**BRADY
RICHARDSON**
REALTOR®

Office: 601.898.2772

Cell: 662.418.8791

Brady@TomSmithLand.com



Expect More. Get More.

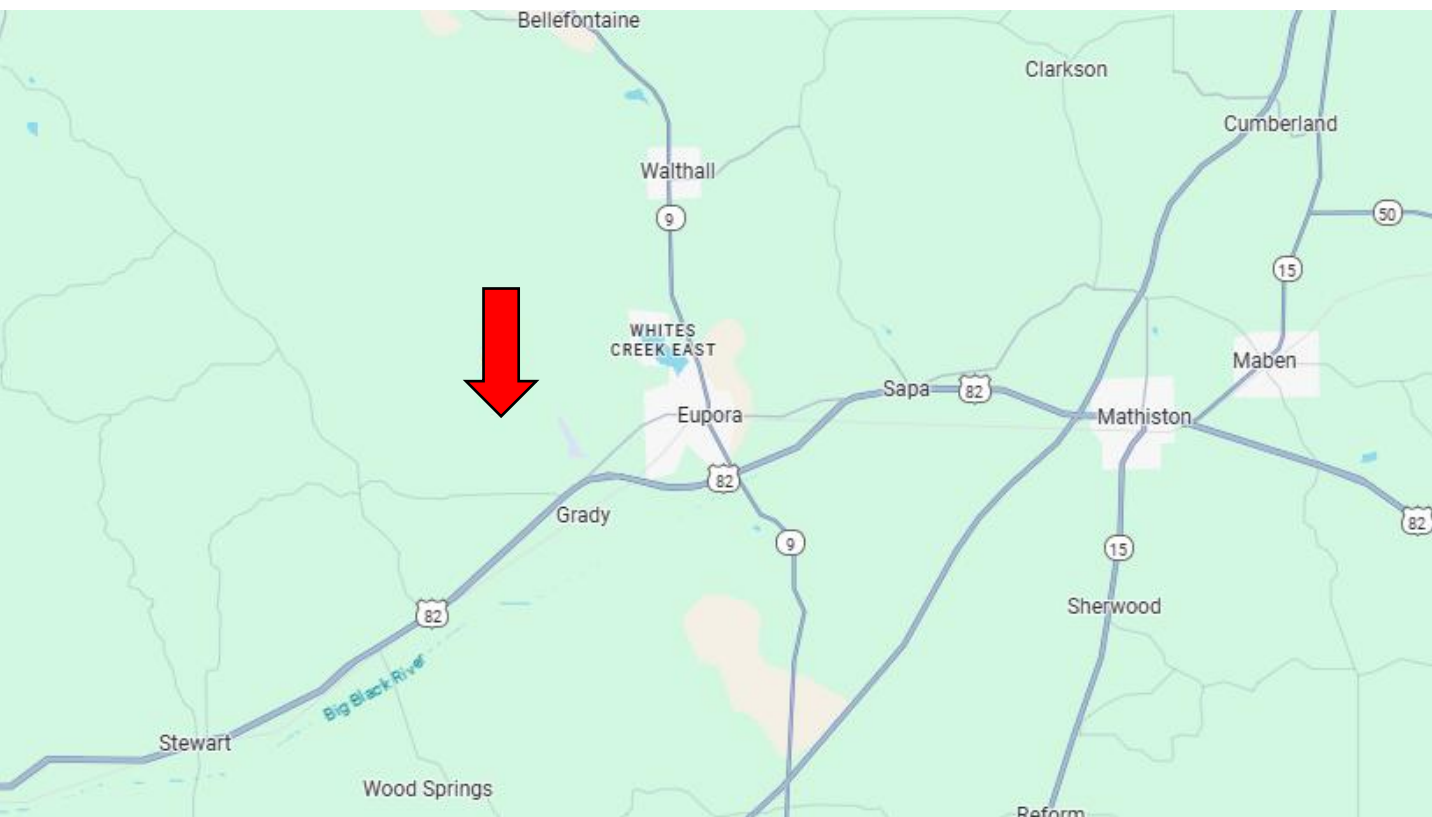
A Real Estate Expert You Can Trust

TomSmithLandandHomes.com

Information is believed to be accurate but not guaranteed.



Aerial Map



Directions from the intersection of HWY 82 W and HWY 9 N: Head West on HWY 82 W for 3.4 miles. Turn right onto Grady road and then turn right on to Lebanon Road. Travel for 2.1 miles and turn left on to Mt Vernon Road. In .9 miles the property will be on your left. [Google Map Link](#)



**BRADY
RICHARDSON**
REALTOR®

Office: 601.898.2772

Cell: 662.418.8791

Brady@TomSmithLand.com



Expect More. Get More.

A Real Estate Expert You Can Trust

TomSmithLandandHomes.com

Information is believed to be accurate but not guaranteed.

