

Fully-Furnished Condo

Lafayette County, MS



\$339,000

Address: 204 Town Center Drive, Unit 31, Oxford, MS 38655

Take a look at this completely remodeled, two-bedroom and two-bathroom condo located in the highly desirable community of Rowandale, Oxford, in Lafayette County, MS. This condo has 888 total square feet with a spacious balcony off the living room and is being sold fully furnished. Amenities include three pools, a walking trail, a dog park, club house with a game room, and volleyball, basketball, and pickleball courts. It is located just two miles from the Ole Miss campus and historic Oxford Square. The property is currently being used as an investment property and generating a high monthly return from Air BNB, but would also be the perfect weekend home for the Ole Miss Fan! Call Sarah Reese for your private showing.

**SARAH REESE
WRIGHT**

REALTOR®

Office: 662.441.2500

Cell: 662.641.6696

SarahReese@TomSmithLand.com



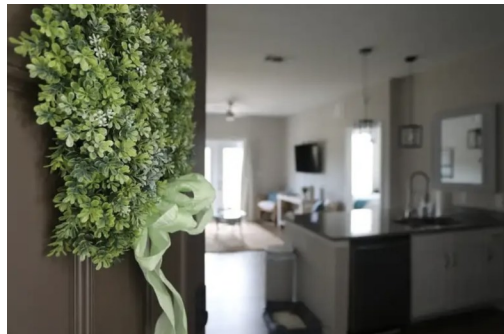
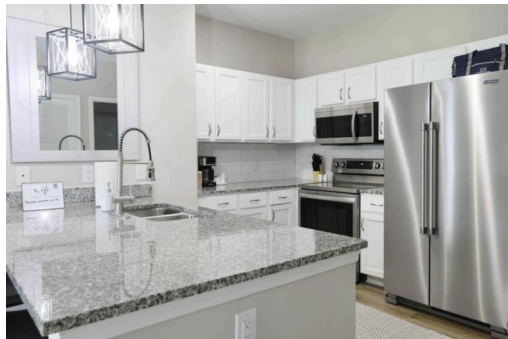
Expect More. Get More.

A Real Estate Expert You Can Trust

TomSmithLandandHomes.com

Information is believed to be accurate but not guaranteed.





A Real Estate Expert *You Can Trust!*

**SARAH REESE
WRIGHT**
REALTOR®

O: 662.441.2500 C: 662.641.6696

SarahReese@TomSmithLand.com

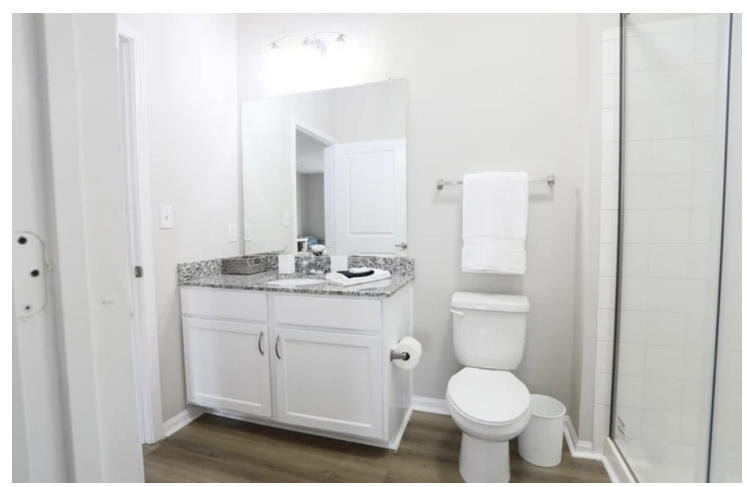
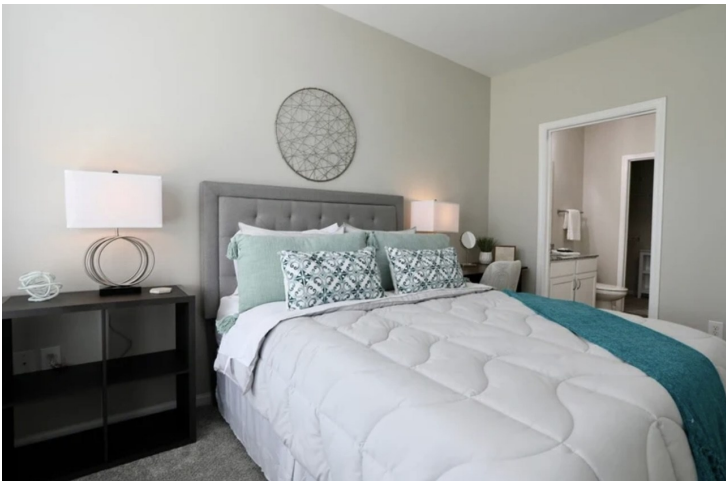
TomSmithLandandHomes.com



Expect More. Get More.



Information is believed to be accurate but not guaranteed.



A Real Estate Expert You Can Trust!

**SARAH REESE
WRIGHT**

REALTOR®

O: 662.441.2500 C: 662.641.6696

SarahReese@TomSmithLand.com

TomSmithLandandHomes.com



Expect More. Get More.



Information is believed to be accurate but not guaranteed.

AERIAL MAP



[Interactive Map Link](#)

A Real Estate Expert
You Can Trust!

SARAH REESE
WRIGHT

REALTOR®

O: 662.441.2500 C: 662.641.6696

SarahReese@TomSmithLand.com

TomSmithLandandHomes.com

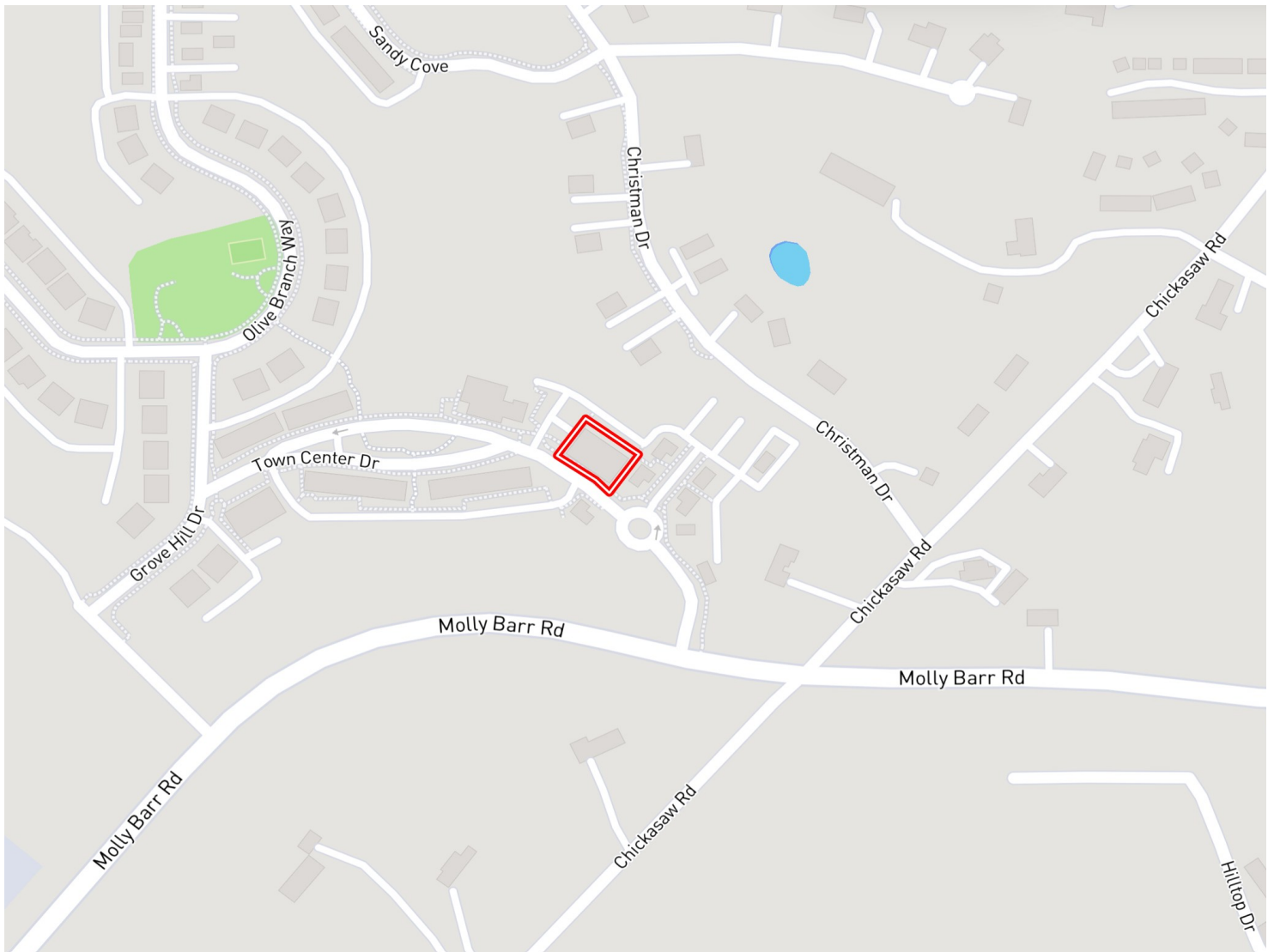


Expect More. Get More.



Information is believed to be accurate but not guaranteed.

OWNERSHIP MAP



A Real Estate Expert
You Can Trust!

**SARAH REESE
WRIGHT**

REALTOR®

O: 662.441.2500 C: 662.641.6696

SarahReese@TomSmithLand.com

TomSmithLandandHomes.com

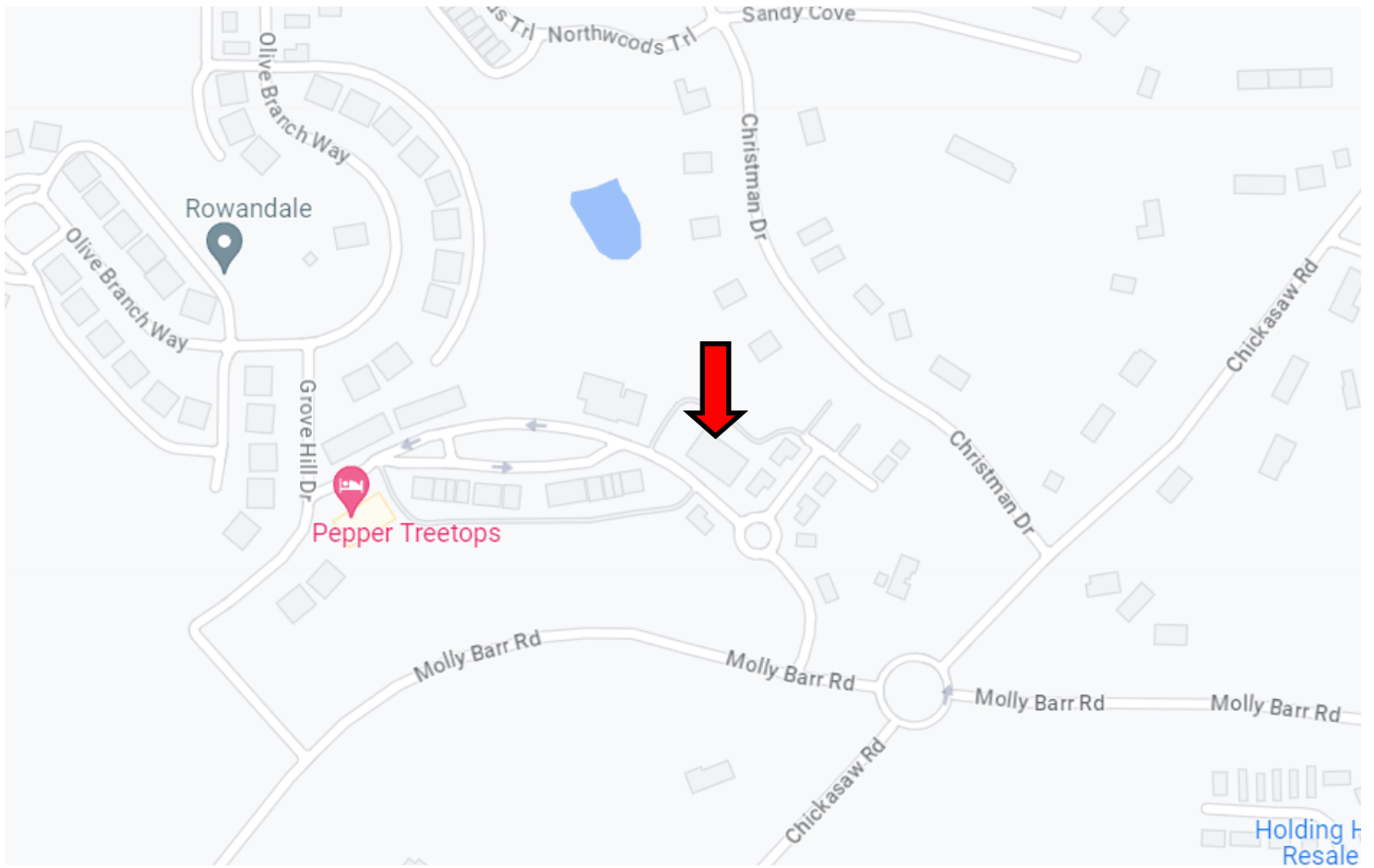


Expect More. Get More.



Information is believed to be accurate but not guaranteed.

DIRECTIONAL MAP



Address: 204 Town Center Drive Unit 33 Oxford, MS 38655

Directions from Oxford, MS: Travel East on N. Lamar Blvd for approximately 1.5 miles. Turn left onto Molly Barr Rd. and in 0.3 miles, at the traffic circle, take the 2nd exit and stay on Molly Barr Rd. In 341 feet turn right onto Town Center Dr. After 476 feet, the condos will be on the right. [Click Here for Google Map Link.](#)



**SARAH REESE
WRIGHT**

REALTOR®

Office: 662.441.2500

Cell: 662.641.6696

SarahReese@TomSmithLand.com



Expect More. Get More.

A Real Estate Expert You Can Trust

TomSmithLandandHomes.com

Information is believed to be accurate but not guaranteed.

