



HUNTING • RECREATION • INVESTMENT

256 ± Acres Webster County, MS
\$396,800



BRADY
RICHARDSON
REALTOR®

Office: 601.898.2772

Cell: 662.418.8791

Brady@TomSmithLand.com



Expect More. Get More.

A Real Estate Expert You Can Trust

TomSmithLandandHomes.com

Information is believed to be accurate but not guaranteed.





This 256± acre tract in Webster County is a great opportunity for anyone looking for acreage to hunt. With 10 established food plots, you'll have prime spots ready to bring in deer in the fall and winter and turkey in the spring. The property has an established road system running throughout, giving you access to every food plot on the property. The property also features direct road access and a creek running right through the middle for a water source for wildlife. Whether you're looking to chase whitetail deer, long bearded gobblers, or just want a peaceful piece of Mississippi land to call your own, this is the place for you. Call Brady to schedule your private showing today!



**BRADY
RICHARDSON**
REALTOR®

Office: 601.898.2772

Cell: 662.418.8791

Brady@TomSmithLand.com



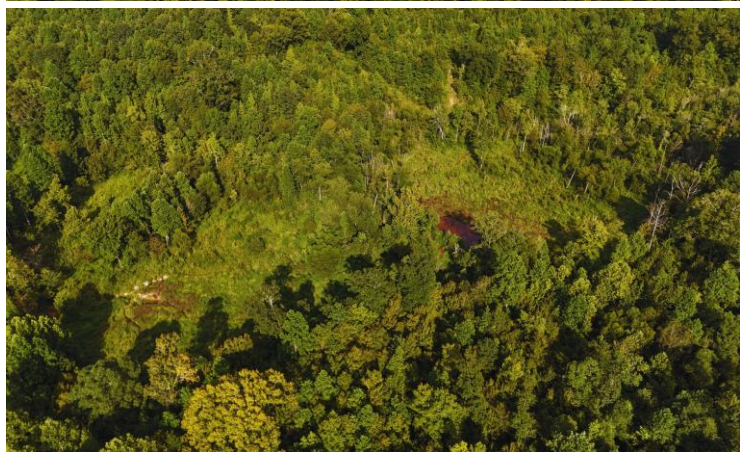
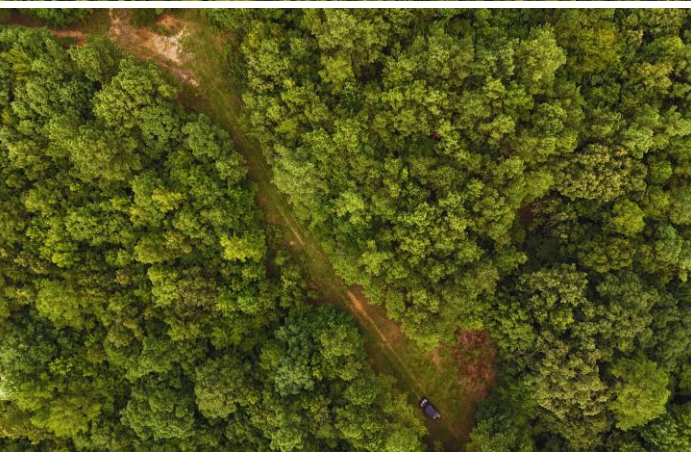
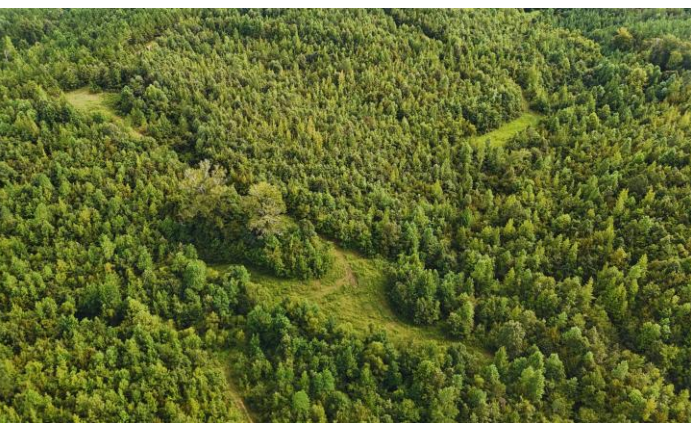
Expect More. Get More.

A Real Estate Expert You Can Trust

TomSmithLandandHomes.com



Information is believed to be accurate but not guaranteed.



BRADY
RICHARDSON
REALTOR®

Office: 601.898.2772

Cell: 662.418.8791

Brady@TomSmithLand.com



Expect More. Get More.

A Real Estate Expert You Can Trust

TomSmithLandandHomes.com

Information is believed to be accurate but not guaranteed.





BRADY
RICHARDSON
REALTOR®

Office: 601.898.2772

Cell: 662.418.8791

Brady@TomSmithLand.com



Expect More. Get More.

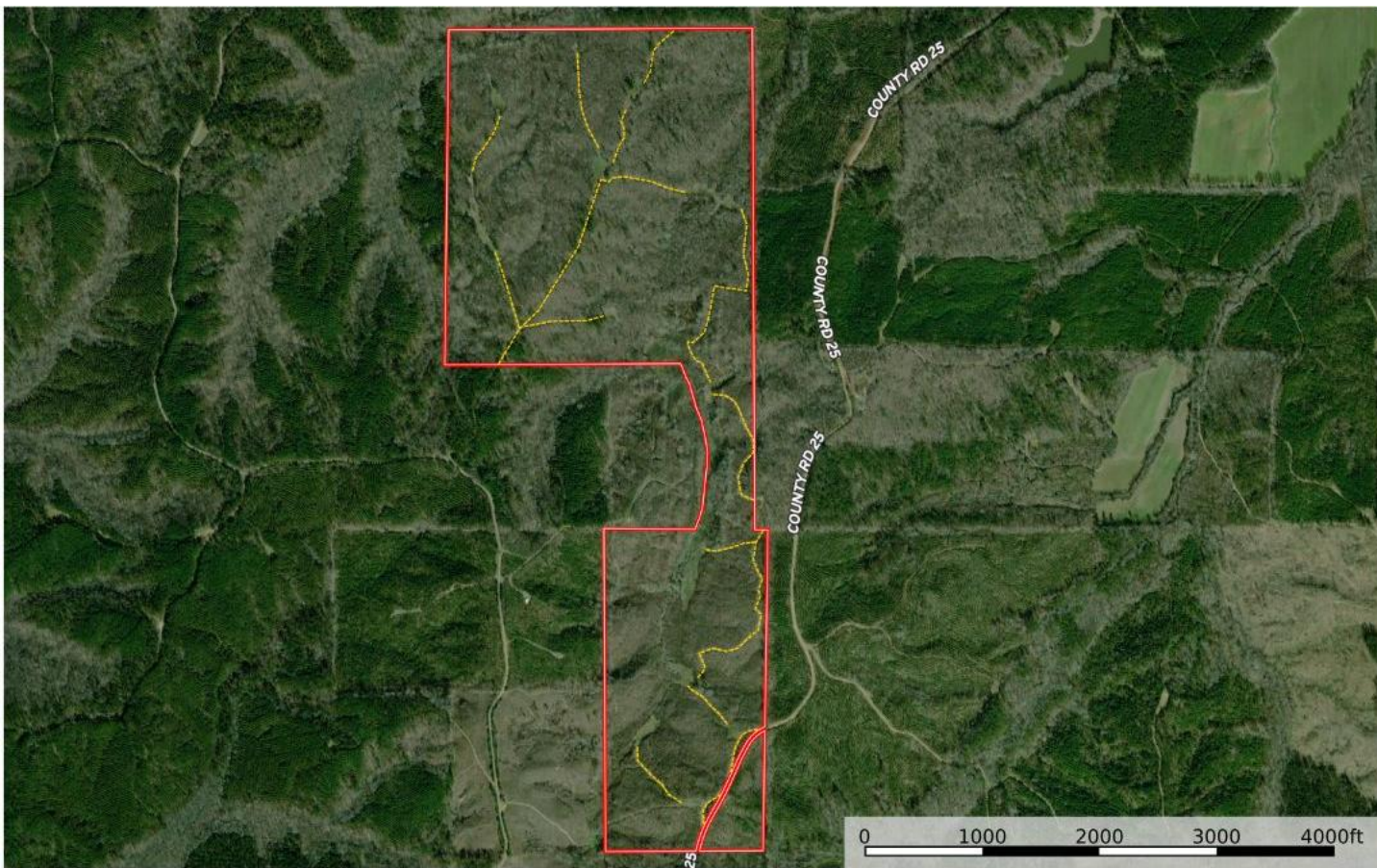
A Real Estate Expert You Can Trust

TomSmithLandandHomes.com



Information is believed to be accurate but not guaranteed.

Aerial



Interactive Map Link



**BRADY
RICHARDSON**
REALTOR®

Office: 601.898.2772

Cell: 662.418.8791

Brady@TomSmithLand.com



Expect More. Get More.

A Real Estate Expert You Can Trust

TomSmithLandandHomes.com

Information is believed to be accurate but not guaranteed.





Ownership



Topo



**BRADY
RICHARDSON**
REALTOR®

Office: 601.898.2772

Cell: 662.418.8791

Brady@TomSmithLand.com



Expect More. Get More.

A Real Estate Expert You Can Trust

TomSmithLandandHomes.com

Information is believed to be accurate but not guaranteed.



Directional



Directions from the intersection of HWY 82 and Hwy 9: Head North on HWY 9 for 9.4 miles and take a left on to MS 404. Travel for 3.2 miles and turn left on to Knight Road. In 2.2 miles the property is on your right. [Google Map Link](#)



**BRADY
RICHARDSON**
REALTOR®

Office: 601.898.2772

Cell: 662.418.8791

Brady@TomSmithLand.com



Expect More. Get More.

A Real Estate Expert You Can Trust

TomSmithLandandHomes.com



Information is believed to be accurate but not guaranteed.