

Prime Timber & Hunting Land

122± Acres in Winston County, MS

\$176,900 | \$1,450 per acre



Are you looking for a great buy on your own hunting spot? This recently cutover tract is in a great location. Build the wildlife food plots where you want them and manage according to your goals! It is located just twelve miles west of Walmart in Louisville, Mississippi in Winston County. It is conveniently situated just one-half mile north of Highway 14. It has frontage on a gravel, Ballard Road along the south side. Logging roads provide additional interior access. Call Michael for additional information.



**MICHAEL
HALFACRE**

MANAGING BROKER

Office: 662.268.6333

Cell: 662.242.4220

MHalfacre@TomSmithLand.com



Expect More. Get More.

A Real Estate Expert You Can Trust

TomSmithLandandHomes.com

Information is believed to be accurate but not guaranteed.





A Real Estate Expert
You Can Trust!

MICHAEL HALFACRE

MANAGING BROKER

O: 662.268.6333 C: 662.242.4220

MHalfacre@TomSmithLand.com

TomSmithLandandHomes.com

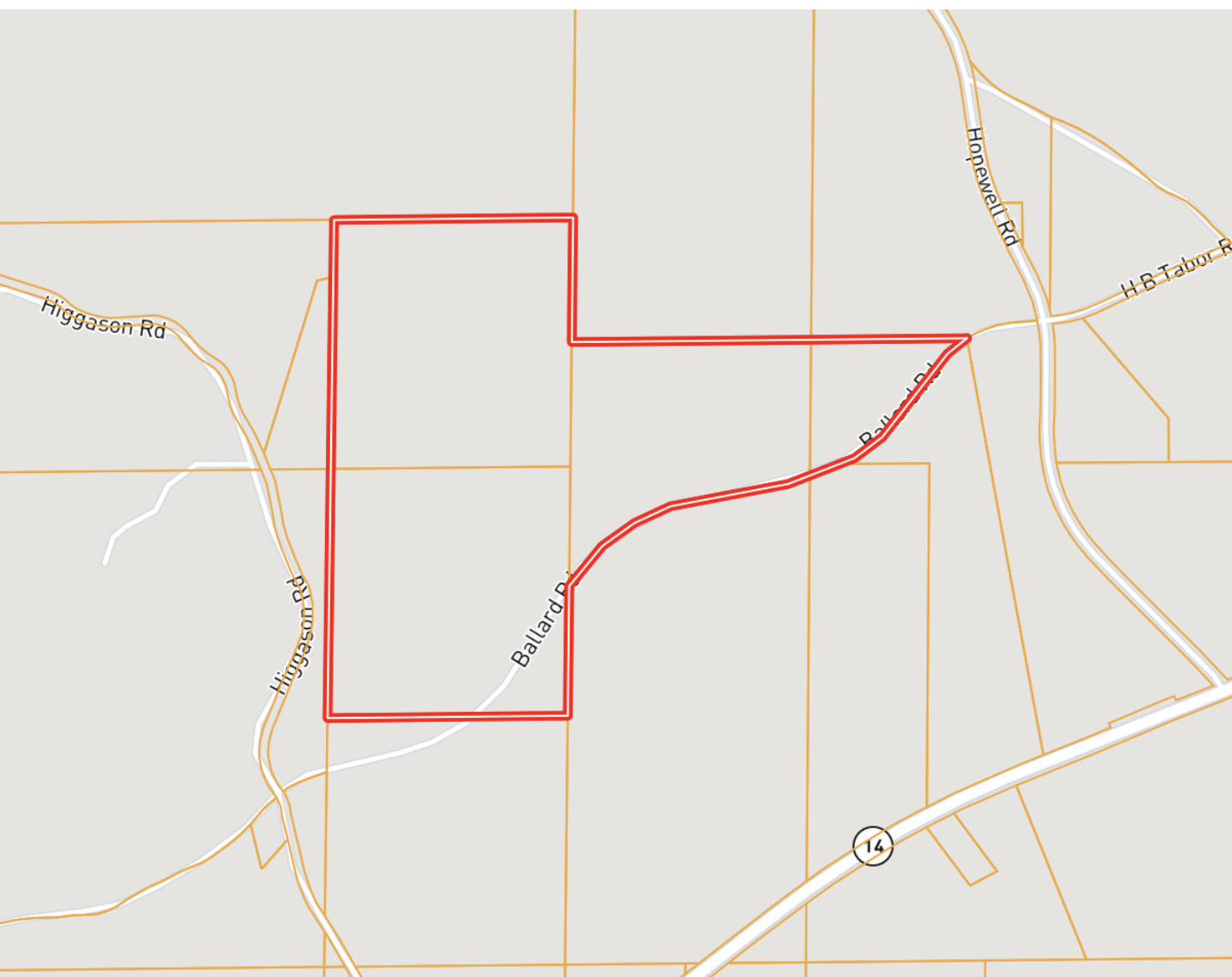


Expect More. Get More.



Information is believed to be accurate but not guaranteed.

Ownership Map



A Real Estate Expert
You Can Trust!

MICHAEL HALFACRE

MANAGING BROKER

O: 662.268.6333 C: 662.242.4220

MHalfacre@TomSmithLand.com

TomSmithLandandHomes.com

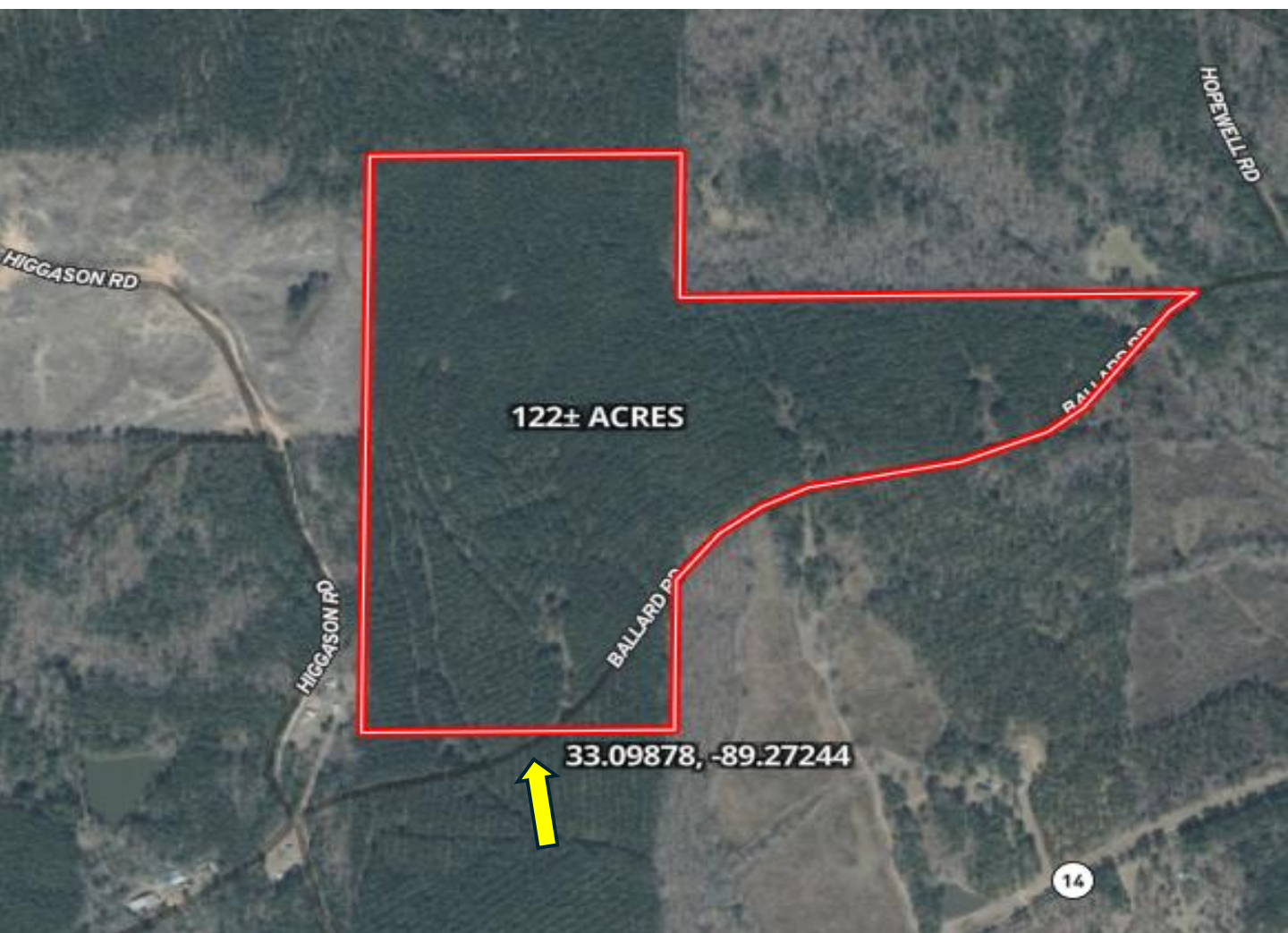


Expect More. Get More.



Information is believed to be accurate but not guaranteed.

Aerial Map



[Click Here for Interactive Map](#)

A Real Estate Expert
You Can Trust!

MICHAEL HALFACRE

MANAGING BROKER

O: 662.268.6333 C: 662.242.4220

MHalfacre@TomSmithLand.com

TomSmithLandandHomes.com

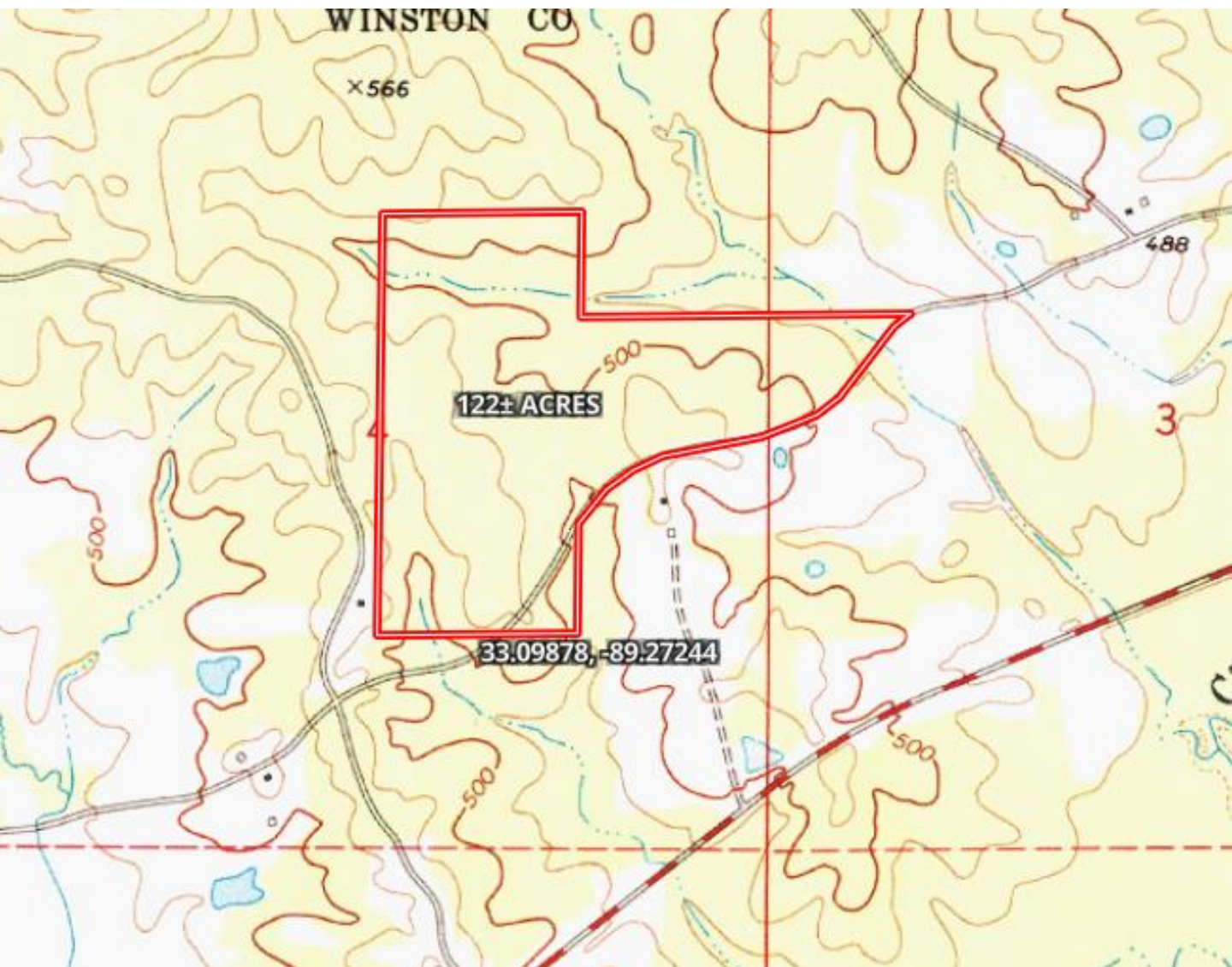


Expect More. Get More.



Information is believed to be accurate but not guaranteed.

Topography Map



A Real Estate Expert
You Can Trust!

MICHAEL HALFACRE

MANAGING BROKER

O: 662.268.6333 C: 662.242.4220

MHalfacre@TomSmithLand.com

TomSmithLandandHomes.com

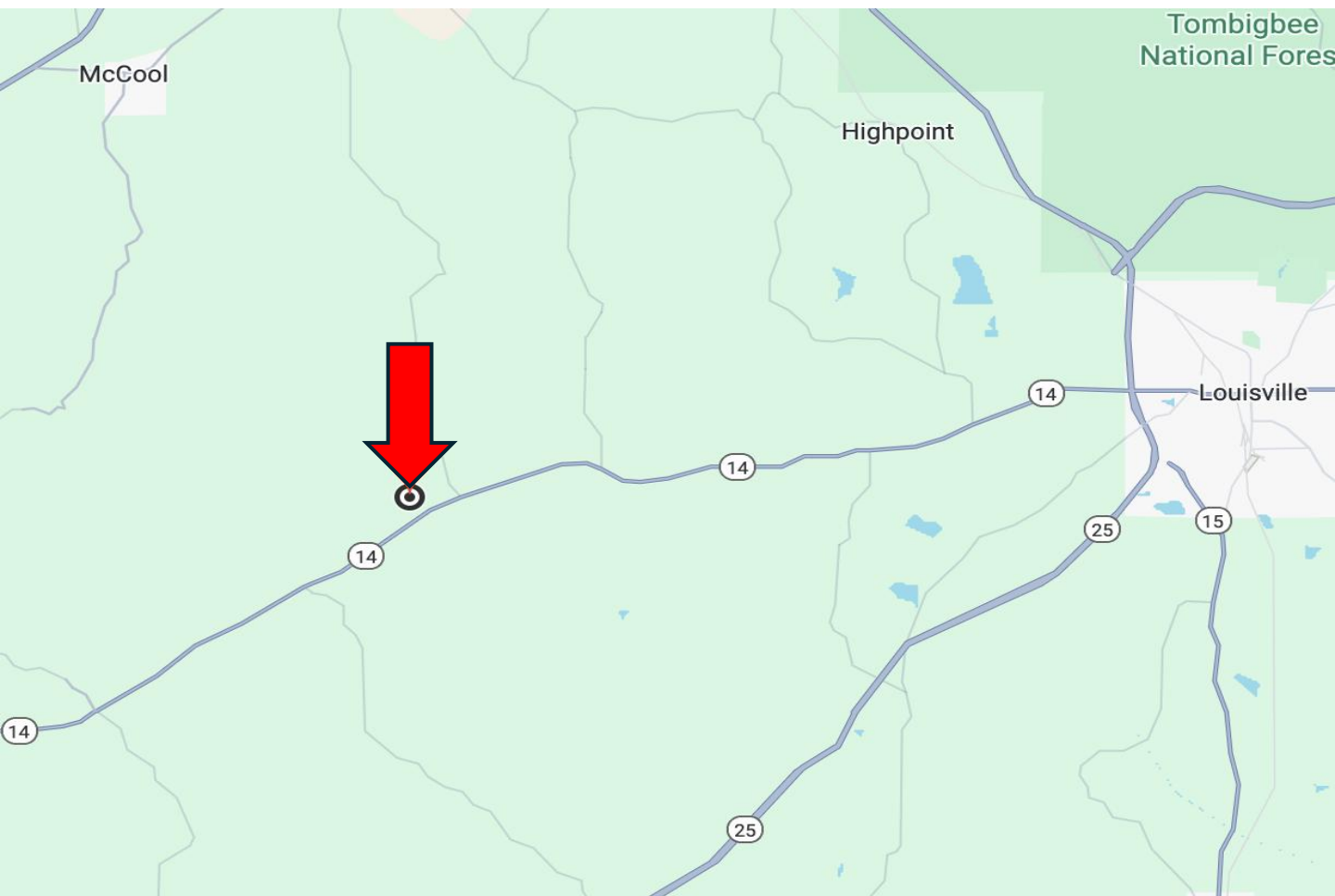


Expect More. Get More.



Information is believed to be accurate but not guaranteed.

Directional Map



Directions from West Main St. Louisville, MS: Travel west on MS-14 W for 10.4 miles, turn right on Higgason gravel road. Travel .4 mile and turn right onto Ballard Road, travel .2 miles. Property is on both side of the road marked with signs. [GOOGLE MAP LINK](#)



**MICHAEL
HALFACRE**

MANAGING BROKER

Office: 662.268.6333

Cell: 662.242.4220

MHalfacre@TomSmithLand.com



Expect More. Get More.

A Real Estate Expert You Can Trust

TomSmithLandandHomes.com

