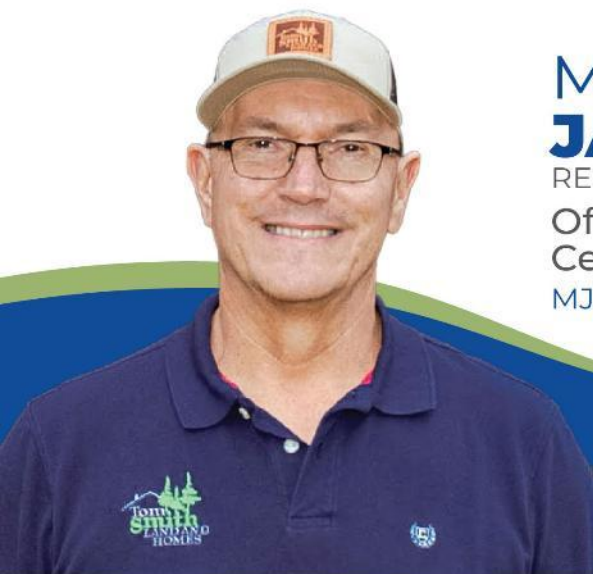


21± Acres in Oktibbeha County Residential & Commercial Zoning



\$675,000

This expansive 21± acre property in Oktibbeha County is ideally located in the heart of Starkville, MS, offering a unique opportunity for a wide range of commercial and residential development. Zoned for both commercial and new residential use, this versatile property provides endless potential for business owners, developers, and investors looking to capitalize on Starkville's growing community. Property is agent owned.



**MIKE
JACKSON**
REALTOR®

Office: 662.268.6333
Cell: 662.803.4999
MJackson@TomSmithLand.com



Expect More. Get More.

A Real Estate Expert You Can Trust

TomSmithLandandHomes.com

Information is believed to be accurate but not guaranteed.





A Real Estate Expert *You Can Trust!*

MIKE JACKSON
REALTOR®

O: 662.268.6333 C: 662.803.4999

MJackson@TomSmithLand.com

TomSmithLandandHomes.com



Expect More. Get More.



Aerial Map



[Click Here for Land ID Interactive Map](#)

A Real Estate Expert
You Can Trust!

MIKE JACKSON

REALTOR®

O: 662.268.6333 C: 662.803.4999

MJackson@TomSmithLand.com

TomSmithLandandHomes.com

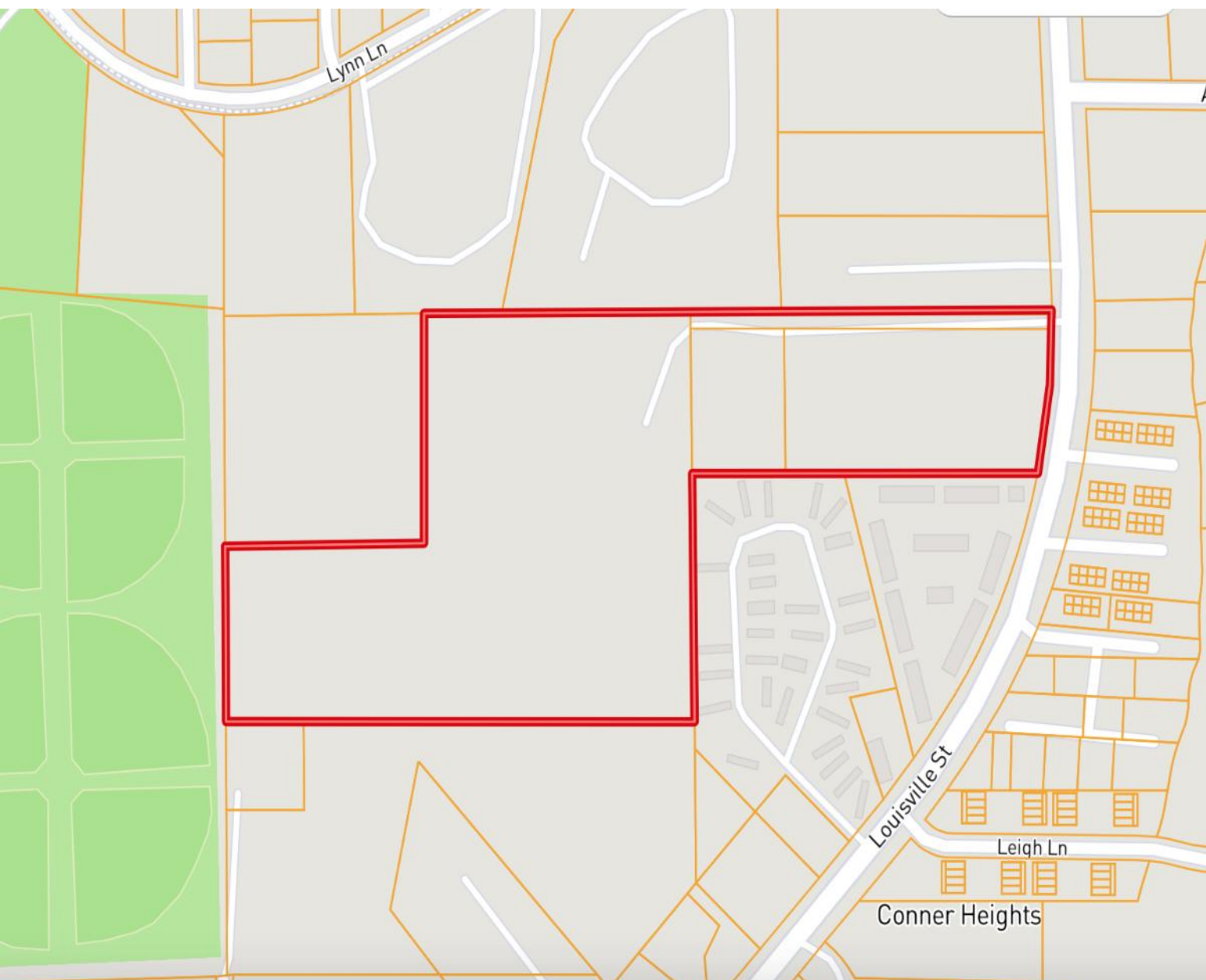


Expect More. Get More.

Information is believed to be accurate but not guaranteed.



Ownership Map



A Real Estate Expert
You Can Trust!

MIKE JACKSON

REALTOR®

O: 662.268.6333 C: 662.803.4999

MJackson@TomSmithLand.com

TomSmithLandandHomes.com

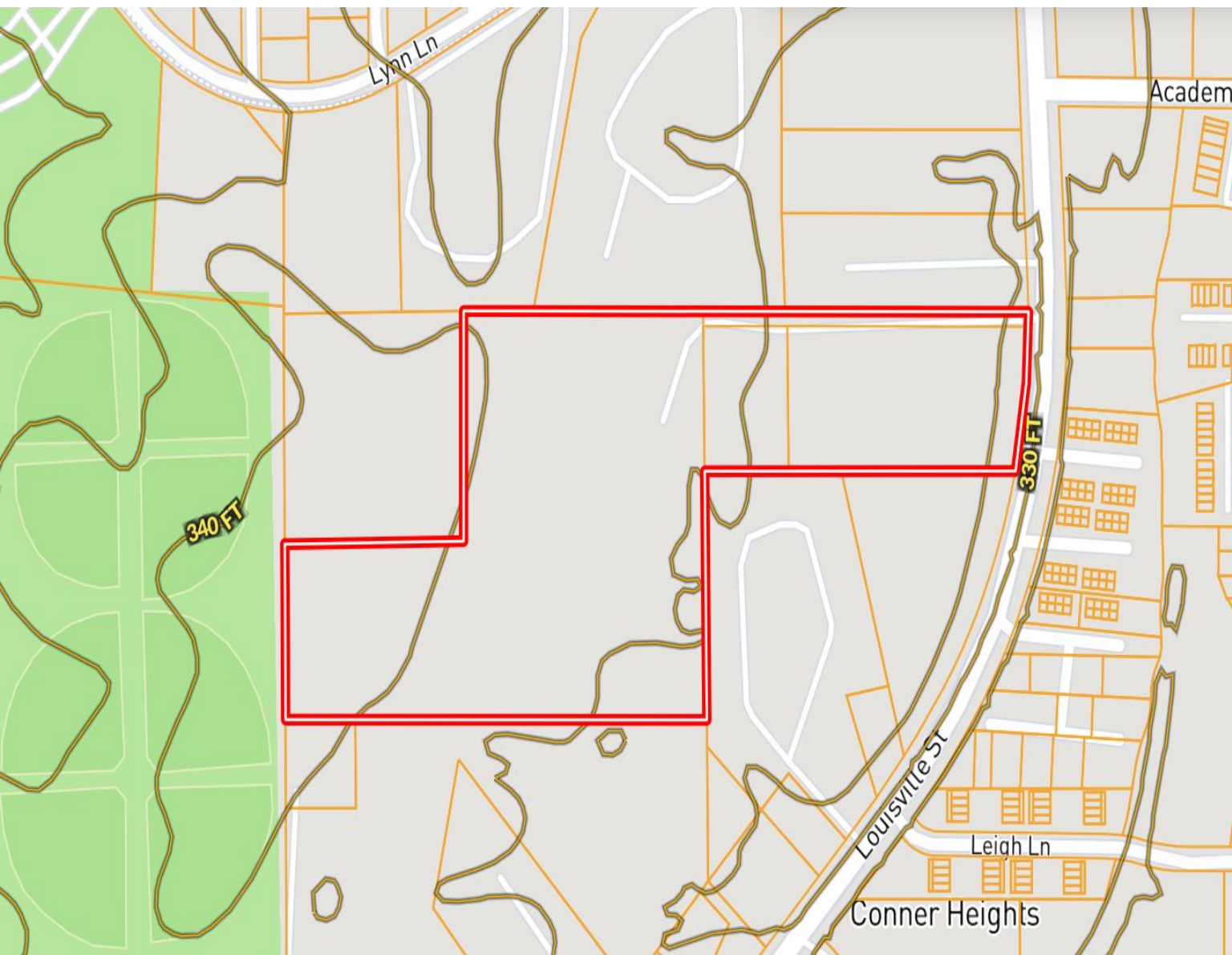


Expect More. Get More.



Information is believed to be accurate but not guaranteed.

Topography Map



A Real Estate Expert
You Can Trust!

MIKE JACKSON
REALTOR®

O: 662.268.6333 C: 662.803.4999

MJackson@TomSmithLand.com

TomSmithLandandHomes.com

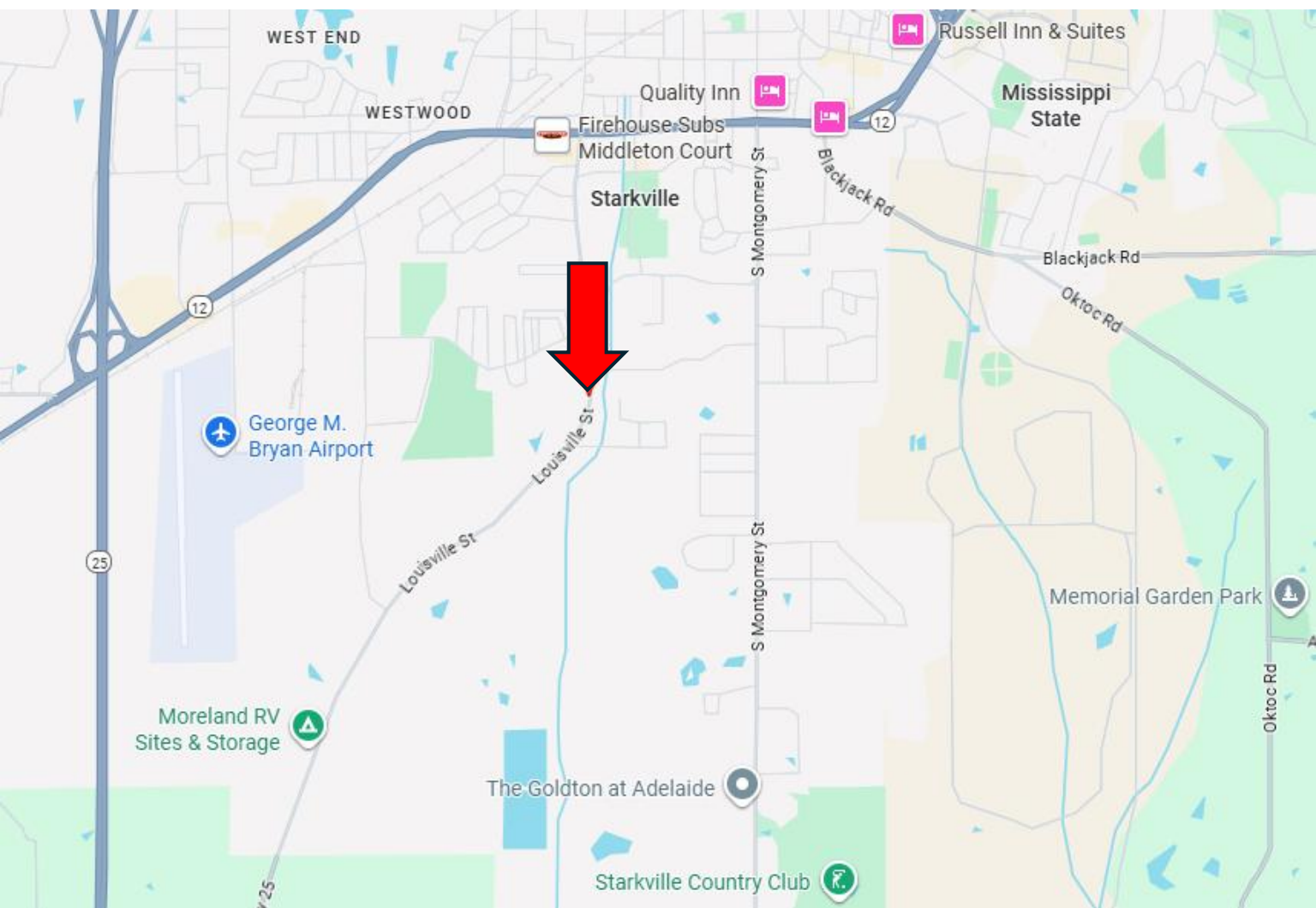


Expect More. Get More.



Information is believed to be accurate but not guaranteed.

Directional Map



Directions from the Intersection of Hwy 12 and Louisville Street in Starkville, MS:

From Hwy 12 at Brewski's, go south on Louisville Street for approximately 1 mile. Just past Academy Road, the property will be on the right. [Google Map Link](#)

A Real Estate Expert
You Can Trust!

MIKE JACKSON

REALTOR®

O: 662.268.6333 C: 662.803.4999

MJackson@TomSmithLand.com

TomSmithLandandHomes.com



Expect More. Get More.

Information is believed to be accurate but not guaranteed.

