

80± ACRE PASTURE & TIMBER LAND ITAWAMBA COUNTY, MS



\$280,000

This 80± acre property is made up of 35± acres of pasture and 45± acres of mature hardwoods with a creek. The land has rolling hills with a couple of nice spots for homesites. There is a pole barn and a couple cattle ponds established on the back 40. The property has a clean internal road system. All 80 acres are completely fenced with a cross fence that splits the back 40 from the front 40. This setup gives you options for running livestock, managing different sections, or simply keeping areas separate. There are plenty of deer and turkey signs across the property. With the open pasture, hardwood bottoms, and surrounding cover, it's a perfect set-up for hunting and wildlife.



**LELAND
SELBY**
REALTOR®

Office: 662.268.6333

Cell: 662.394.9876

Leland@TomSmithLand.com



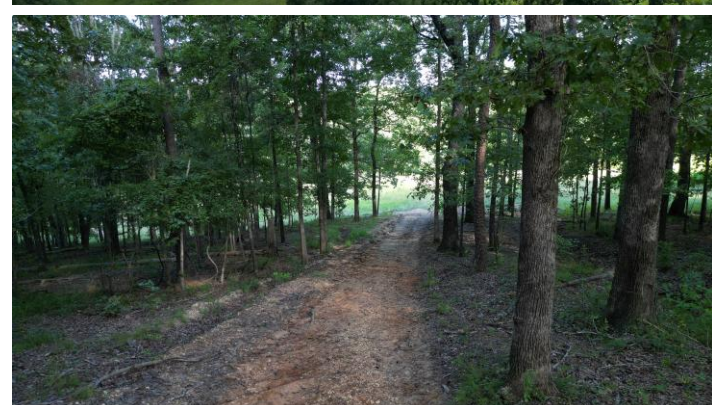
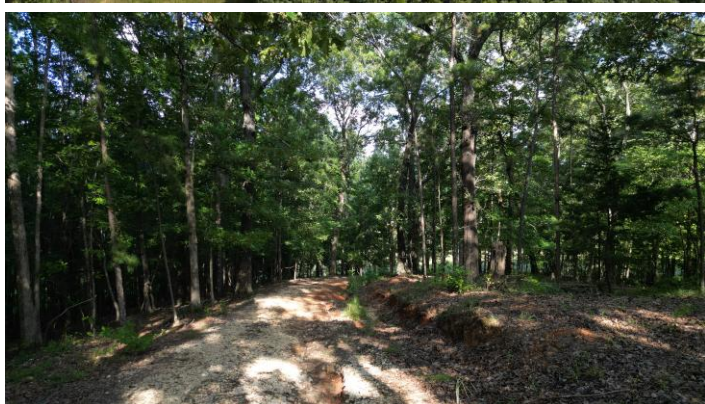
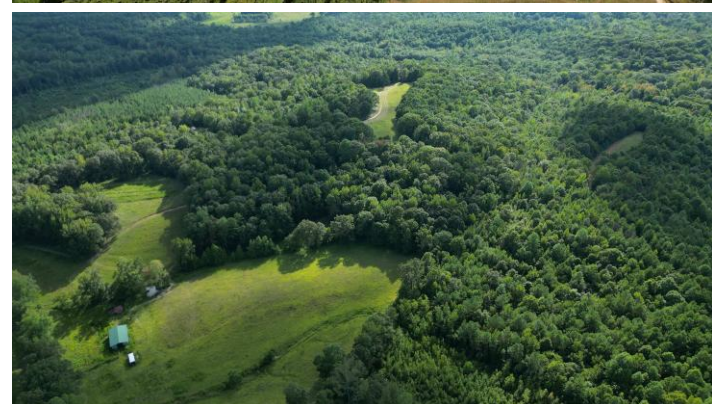
Expect More. Get More.

A Real Estate Expert You Can Trust

TomSmithLandandHomes.com

Information is believed to be accurate but not guaranteed.





CLICK HERE FOR DRONE VIDEO

A Real Estate Expert
You Can Trust!

LELAND SELBY
REALTOR®

O: 662.268.6333 C: 662.394.9876

Leland@TomSmithLand.com

TomSmithLandandHomes.com



Expect More. Get More.



Information is believed to be accurate but not guaranteed.

AERIAL MAP



[CLICK HERE FOR INTERACTIVE MAP](#)

A Real Estate Expert
You Can Trust!

LELAND SELBY
REALTOR®

O: 662.268.6333 C: 662.394.9876

Leland@TomSmithLand.com

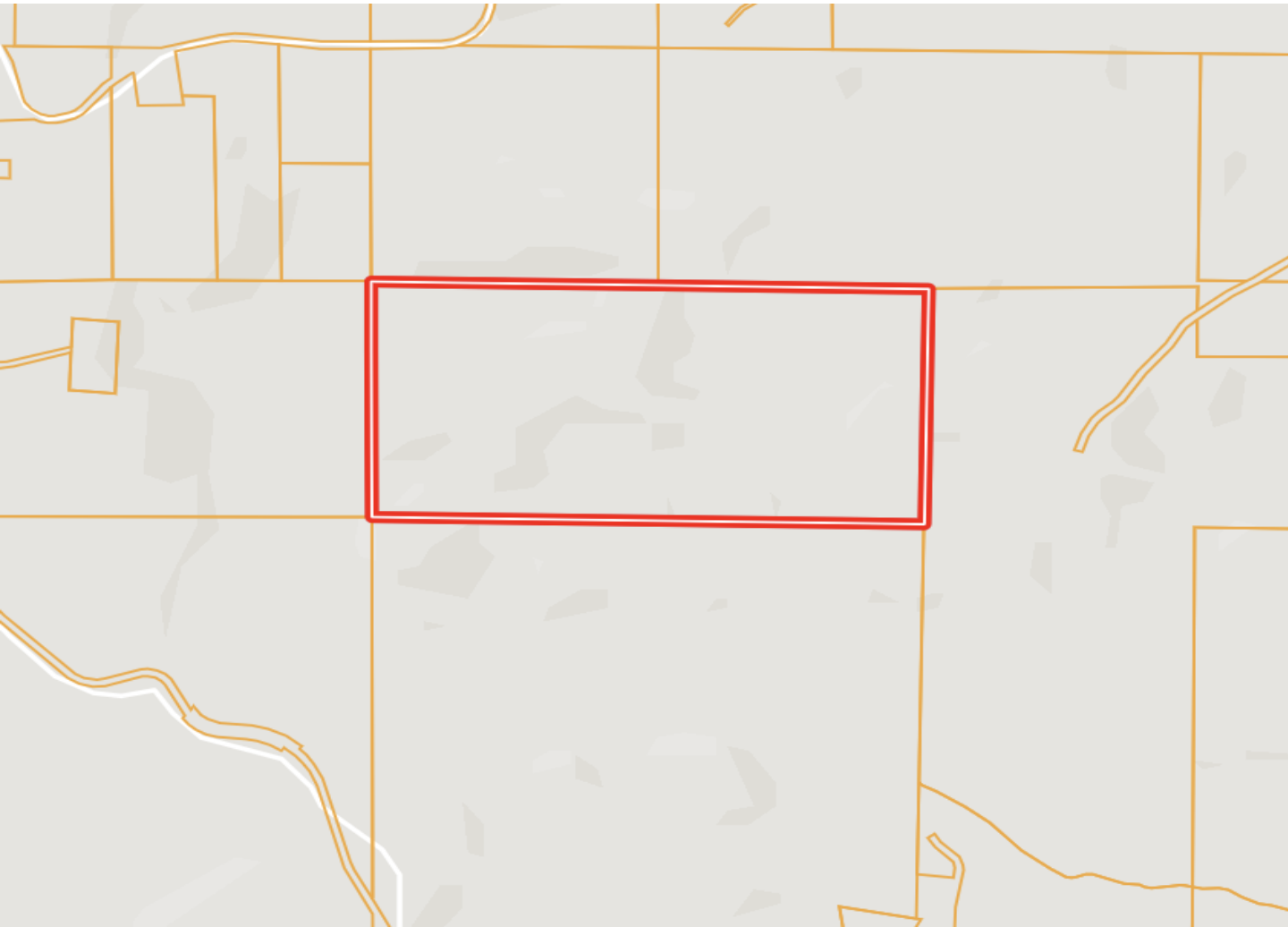
TomSmithLandandHomes.com



Expect More. Get More.



OWNERSHIP MAP



A Real Estate Expert
You Can Trust!

LELAND SELBY
REALTOR®

O: 662.268.6333 C: 662.394.9876

Leland@TomSmithLand.com

TomSmithLandandHomes.com

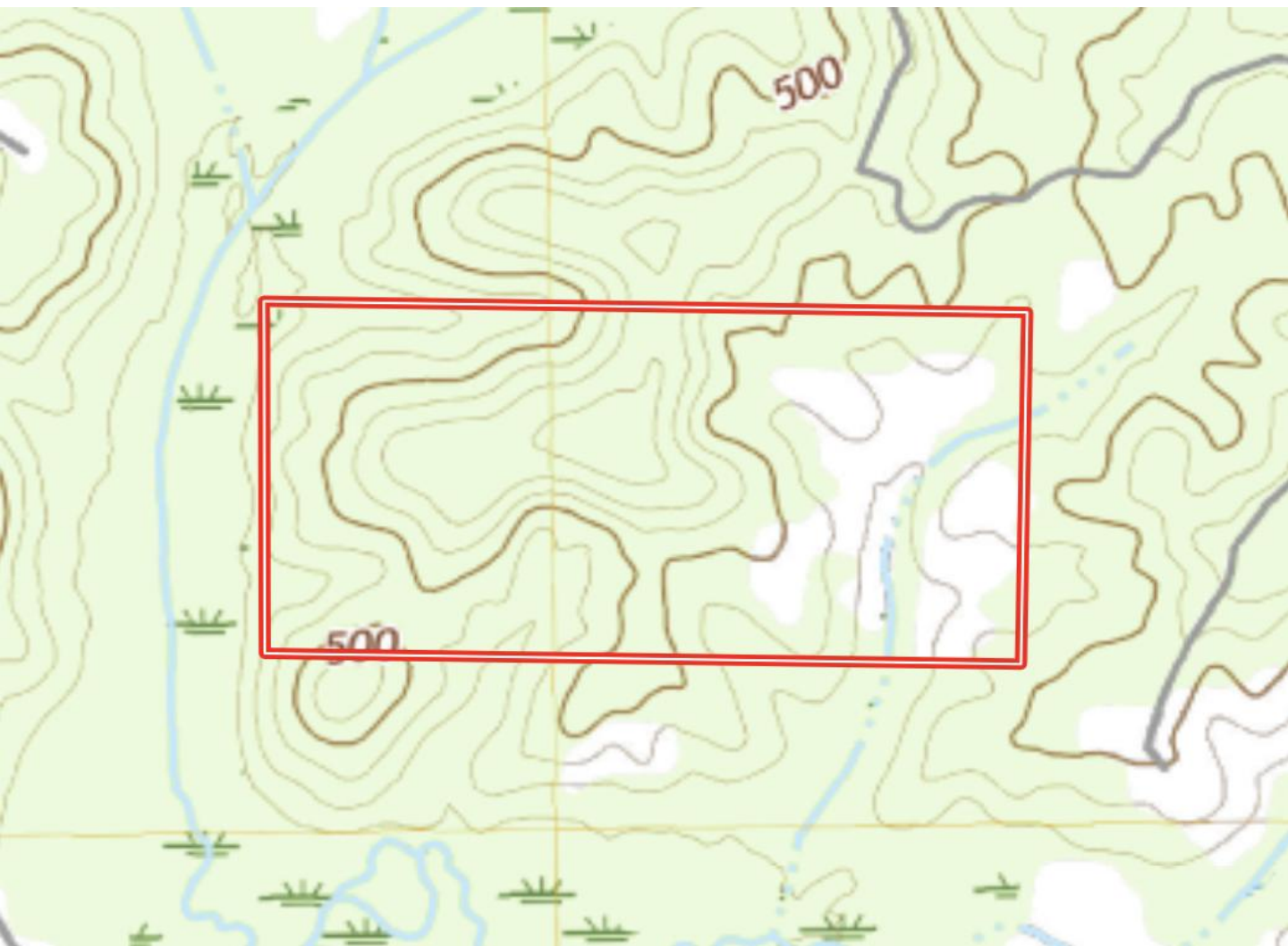


Expect More. Get More.



Information is believed to be accurate but not guaranteed.

TOPOGRAPHY MAP



A Real Estate Expert
You Can Trust!

LELAND SELBY
REALTOR®

O: 662.268.6333 C: 662.394.9876

Leland@TomSmithLand.com

TomSmithLandandHomes.com

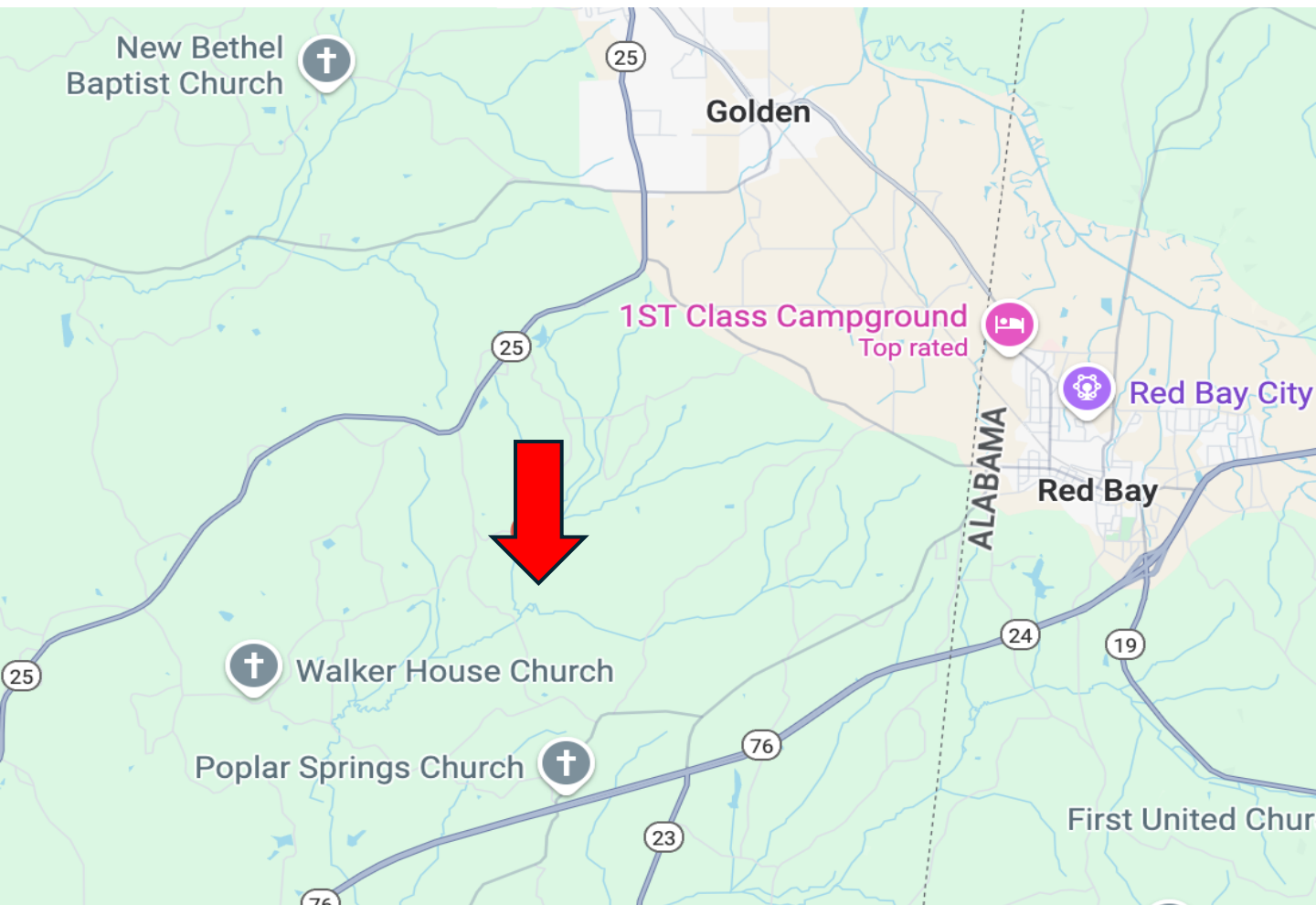


Expect More. Get More.



Information is believed to be accurate but not guaranteed.

DIRECTIONAL MAP



Directions from MS-25 N in Belmont, MS: Head west on MS-25 N toward Old Hwy 25 in 11.1 miles turn right onto Antioch Church Rd, in .9 miles Turn left onto Jerico Rd and in .5 miles the easement road will be on your right. [GOOGLE MAP LINK](#)



**LELAND
SELBY**
REALTOR®

Office: 662.268.6333
Cell: 662.394.9876
Leland@TomSmithLand.com



Expect More. Get More.

A Real Estate Expert You Can Trust

TomSmithLandandHomes.com

Information is believed to be accurate but not guaranteed.

