

Spacious Townhome in Cleveland Bolivar County, MS



Take a look at this spacious townhome located in Downtown Cleveland, Bolivar County, MS. This townhome features three bedrooms, two and a half bathrooms and has over 1700+/- square feet. This would make the perfect starter home or weekend home. It would also be great for someone looking to downsize. Centrally located, you are within walking distance to Delta State University and Historic Downtown Cleveland. Currently, this townhome is being used as a profitable Air BNB. Financials available upon request. Don't miss out on this great property and call Sarah Reese today for your private showing!

Directions from Hwy 8 & Hwy 61 in Cleveland.

MS: Travel West on Hwy 8 for approximately 0.7 miles, turn left onto North Victoria Ave. In 0.2 miles turn right into the parking located behind the townhomes. The townhome is the first one on the corner.

[Click for Google Maps](#)

502 South Court St. Unit F. Cleveland, MS 38732

\$230,000



**SARAH REESE
WRIGHT**

REALTOR®

Office: 662.441.2500

Cell: 662.641.6696

SarahReese@TomSmithLand.com



Expect More. Get More.

A Real Estate Expert You Can Trust

TomSmithLandandHomes.com

Information is believed to be accurate but not guaranteed.





A Real Estate Expert You Can Trust!

SARAH REESE
WRIGHT

REALTOR®

O: 662.441.2500 C: 662.641.6696

SarahReese@TomSmithLand.com

TomSmithLandandHomes.com

**Tom
Smith**
LAND AND
HOMES

Expect More. Get More.

2011-2024
BEST
BROKERAGES

Information is believed to be accurate but not guaranteed.



A Real Estate Expert
You Can Trust!

SARAH REESE
WRIGHT

REALTOR®

O: 662.441.2500 C: 662.641.6696

SarahReese@TomSmithLand.com

TomSmithLandandHomes.com

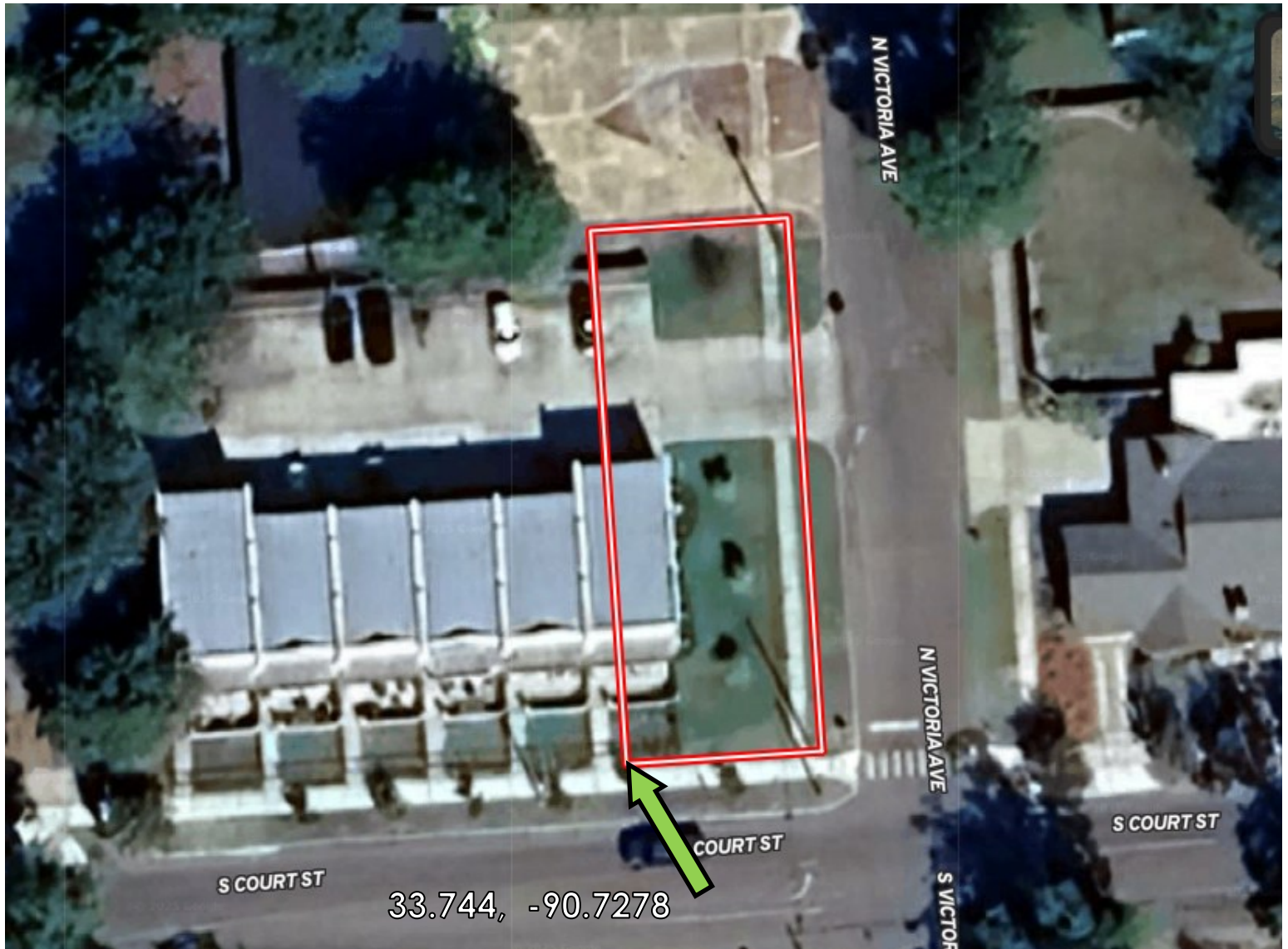
Tom
Smith
LAND AND
HOMES

Expect More. Get More.

2011-2024
BEST
BROKERAGES

Information is believed to be accurate but not guaranteed.

AERIAL MAP



[Click Here for Interactive Map](#)

A Real Estate Expert
You Can Trust!

SARAH REESE
WRIGHT

REALTOR®

O: 662.441.2500 C: 662.641.6696

SarahReese@TomSmithLand.com

TomSmithLandandHomes.com

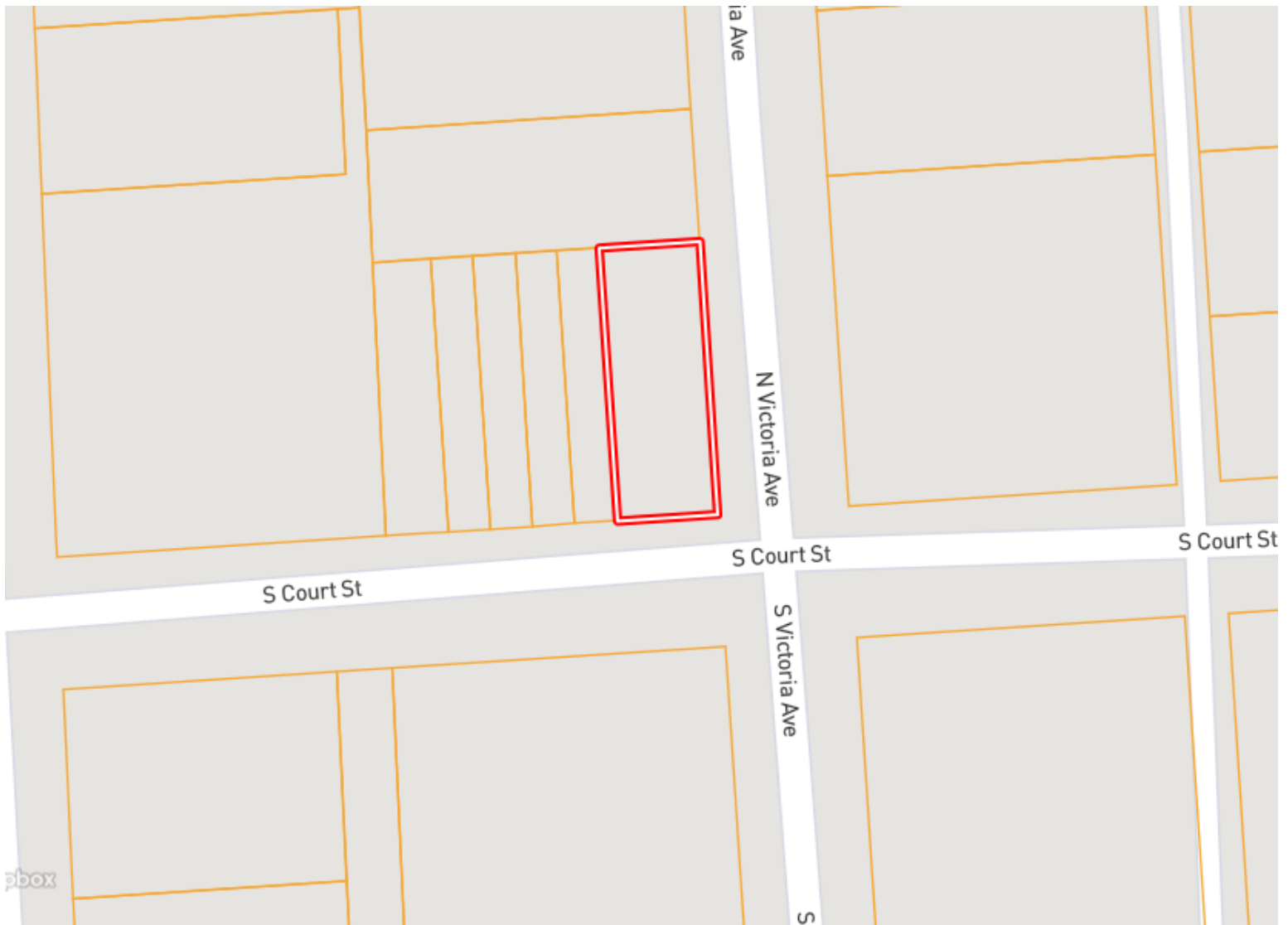


Expect More. Get More.

Information is believed to be accurate but not guaranteed.



OWNERSHIP MAP



A Real Estate Expert
You Can Trust!

SARAH REESE
WRIGHT
REALTOR®

O: 662.441.2500 C: 662.641.6696

SarahReese@TomSmithLand.com

TomSmithLandandHomes.com

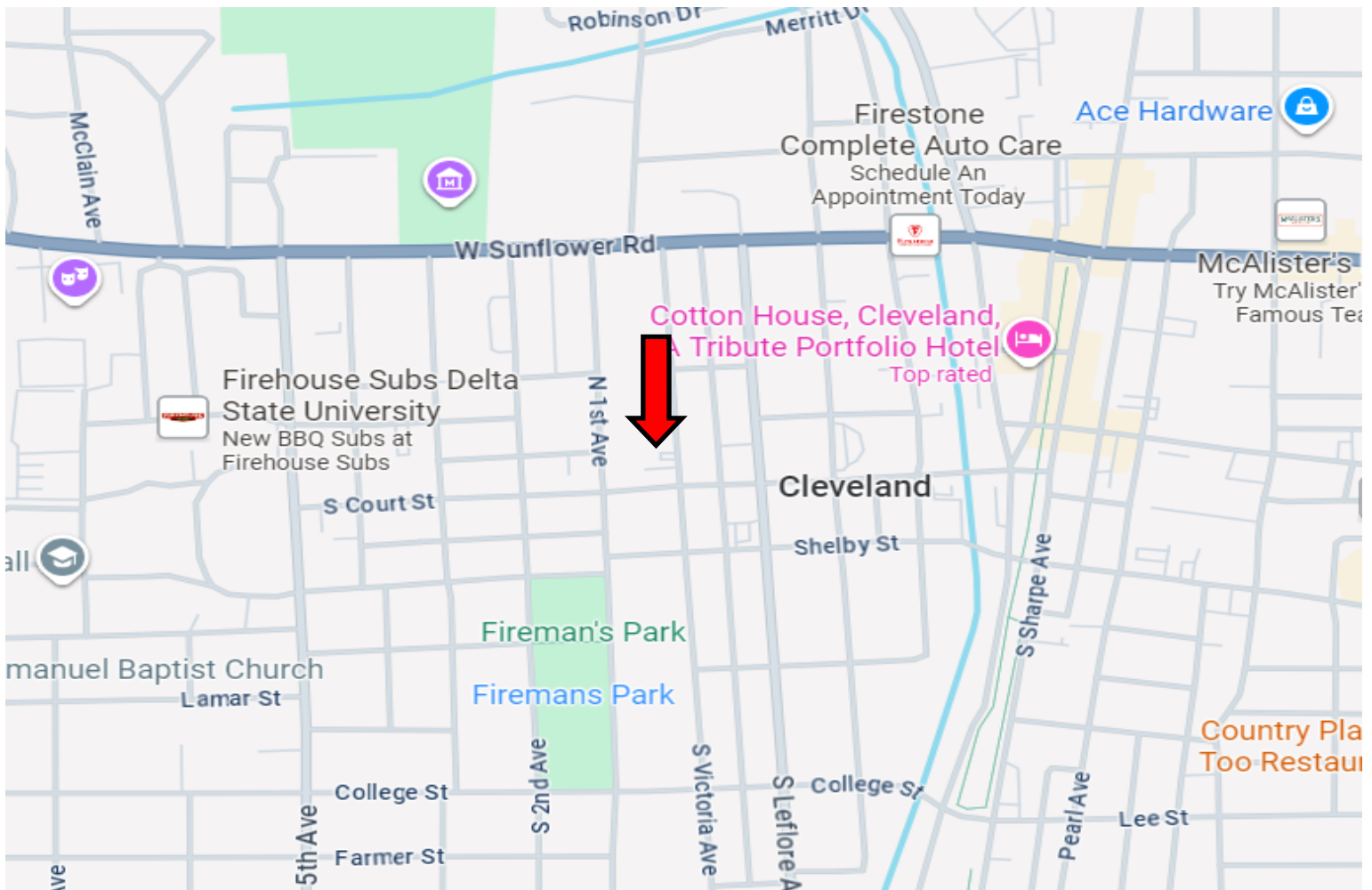


Expect More. Get More.

Information is believed to be accurate but not guaranteed.



DIRECTIONAL MAP



Address: 502 S. Court St. Unit F Cleveland, MS 38732

Directions from Hwy 8 & Hwy 61 in Cleveland, MS: Travel West on Hwy 8 for approximately 0.7 miles, turn left onto North Victoria Ave. In 0.2 miles turn right into the parking located behind the townhomes. The townhome is the first one on the corner. **[Click for Google Maps](#)**



**SARAH REESE
WRIGHT**

REALTOR®

Office: 662.441.2500

Cell: 662.641.6696

SarahReese@TomSmithLand.com



Expect More. Get More.

A Real Estate Expert You Can Trust

TomSmithLandandHomes.com

Information is believed to be accurate but not guaranteed.

