

WASHINGTON COUNTY HOME ON LARGE, SHADED LOT

203 Oak Court, Hollandale, MS 38748 • \$225,000

This 3,107 sq. ft. home is located on a beautiful, shaded 0.52± acre lot in Washington County, MS. With four bedrooms and three bathrooms, it's designed to meet the needs of any family. The large kitchen features an island and adjoining dining area, perfect for hosting family and friends. A bright sunroom provides a private retreat for relaxing, while the living room at the front of the home offers views of the stately oak trees that frame the property. Call Bruce to schedule your tour of this spacious home today!



**BRUCE
WEST**

ALC®, ASSOCIATE BROKER
ACCREDITED LAND CONSULTANT

Office: 662.441.2500

Cell: 662.873.3007

Bruce@TomSmithLand.com



Expect More. Get More.

A Real Estate Expert You Can Trust

TomSmithLandandHomes.com

Information is believed to be accurate but not guaranteed.





A Real Estate Expert
You Can Trust!

BRUCE WEST
REALTOR®

O: 662.441.2500 C: 662.873.3007

Bruce@TomSmithLand.com

TomSmithLandandHomes.com

**Tom
Smith
LAND AND
HOMES**

Expect More. Get More.

2011-2024
BEST
BROKERAGES

Information is believed to be accurate but not guaranteed.



A Real Estate Expert
You Can Trust!

BRUCE WEST

ALC®, ASSOCIATE BROKER
ACCREDITED LAND CONSULTANT

O: 662.441.2500 C: 662.873.3007

Bruce@TomSmithLand.com

TomSmithLandandHomes.com



Expect More. Get More.



Information is believed to be accurate but not guaranteed.



A Real Estate Expert
You Can Trust!

BRUCE WEST

ALC®, ASSOCIATE BROKER
ACCREDITED LAND CONSULTANT

O: 662.441.2500 C: 662.873.3007

Bruce@TomSmithLand.com

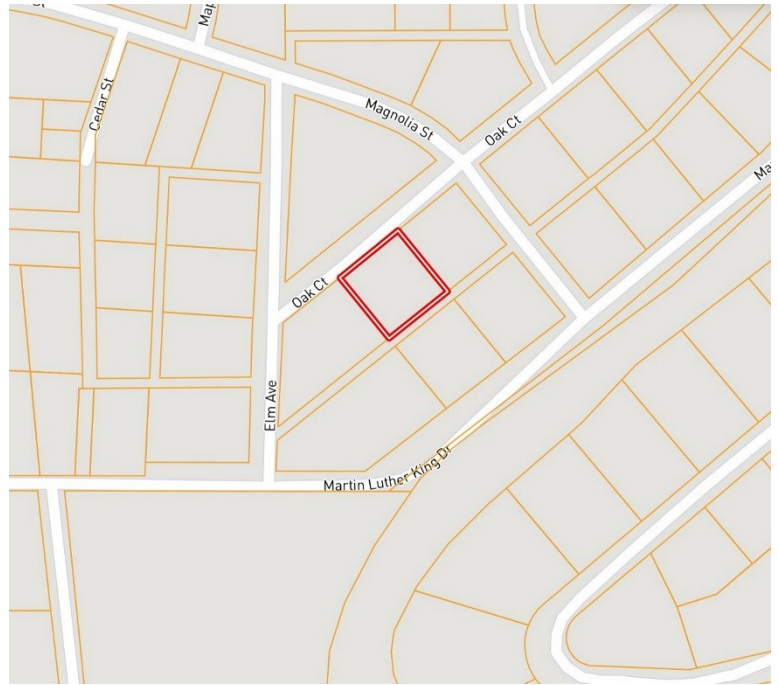
TomSmithLandandHomes.com

**Tom
Smith
LAND AND
HOMES**

Expect More. Get More.

2011-2025
NATIONAL
BEST
AGENTS

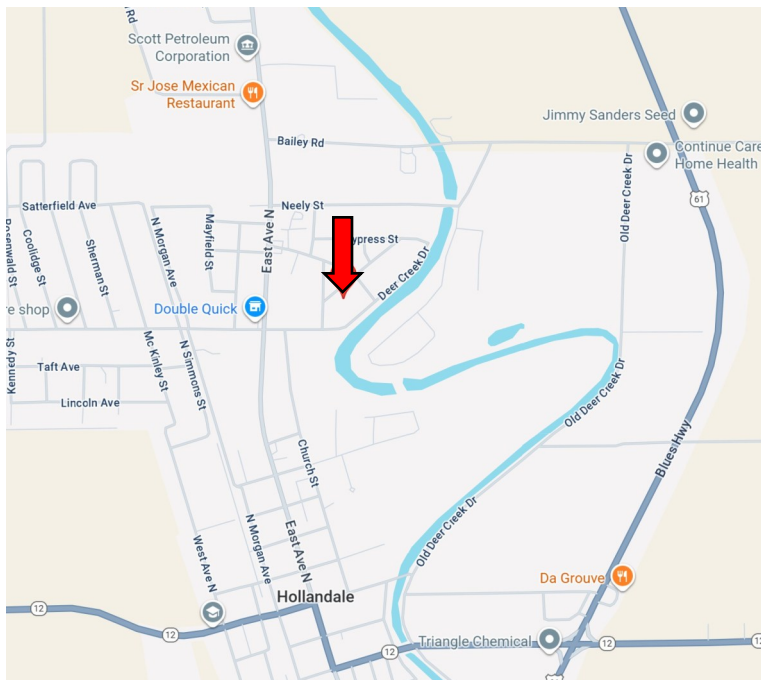
Information is believed to be accurate but not guaranteed.



Click here for the Land id
Interactive Map Link

Directions from Hwy 12 and Hwy 61 in Hollandale, MS: Travel West on Hwy 12 for 0.6 miles. Turn right onto East Ave and travel 0.8 miles. Turn right onto Martin Luther King Drive, and then take the next left onto Elm Ave. Turn right onto Oak Ct. After 233 feet, the home will be on the right.

203 Oak Ct., Hollandale, MS 38748 -
GOOGLE MAP LINK



**BRUCE
WEST**

ALC®, ASSOCIATE BROKER
ACCREDITED LAND CONSULTANT

Office: 662.441.2500

Cell: 662.873.3007

Bruce@TomSmithLand.com



Expect More. Get More.

A Real Estate Expert You Can Trust

TomSmithLandandHomes.com

Information is believed to be accurate but not guaranteed.

