

MULTI-UNIT, INCOME PRODUCING PROPERTIES SUNFLOWER COUNTY, MS



This income-producing multi-family rental property located at **107 East Percy Street** has two spacious units currently leased and producing cash flow. This unit location is on a large 0.25± acre lot close to downtown Indianola in Sunflower County, MS. Two stories with a unit on each floor totaling 3,806 square feet with large front porches facing East Percy Street.

107 & 109 EAST PERCY ST., INDIANOLA, MS 38751 | \$337,000

This income-producing multi-family rental property located at **109 East Percy Street** has two spacious units currently leased and producing cash flow. This unit location is on a large 0.25± acre lot close to downtown Indianola in Sunflower County, MS. Two stories with a unit on each floor totaling 2,471 square feet with large front porches facing East Percy Street. Call Emerson today for your private showing.



**EMERSON
LOVELACE**

REALTOR®

Office: 662.441.2500

Cell: 601.715.3302

Emerson@TomSmithLand.com



Expect More. Get More.

A Real Estate Expert You Can Trust

TomSmithLandandHomes.com

Information is believed to be accurate but not guaranteed.





EMERSON LOVELACE

REALTOR®

Office: 662.441.2500

Cell: 601.715.3302

Emerson@TomSmithLand.com



Expect More. Get More.

A Real Estate Expert You Can Trust

TomSmithLandandHomes.com

Information is believed to be accurate but not guaranteed.





EMERSON LOVELACE

REALTOR®

Office: 662.441.2500

Cell: 601.715.3302

Emerson@TomSmithLand.com



Expect More. Get More.

A Real Estate Expert You Can Trust

TomSmithLandandHomes.com

Information is believed to be accurate but not guaranteed.





**EMERSON
LOVELACE**

REALTOR®

Office: 662.441.2500

Cell: 601.715.3302

Emerson@TomSmithLand.com



Expect More. Get More.

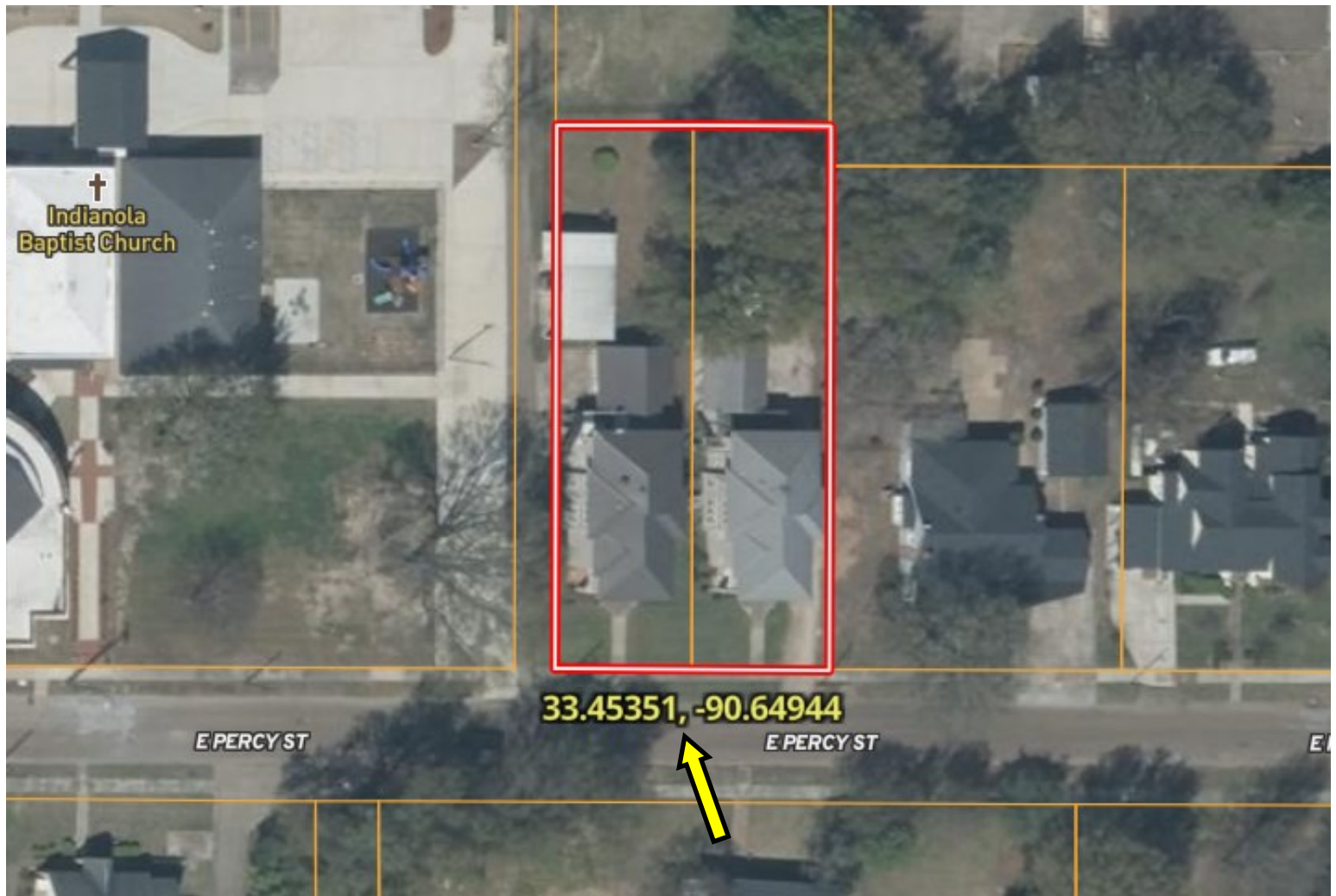
A Real Estate Expert You Can Trust

TomSmithLandandHomes.com

Information is believed to be accurate but not guaranteed.



AERIAL MAP



[Click for Interactive Map](#)



EMERSON
LOVELACE

REALTOR®

Office: 662.441.2500

Cell: 601.715.3302

Emerson@TomSmithLand.com



Expect More. Get More.

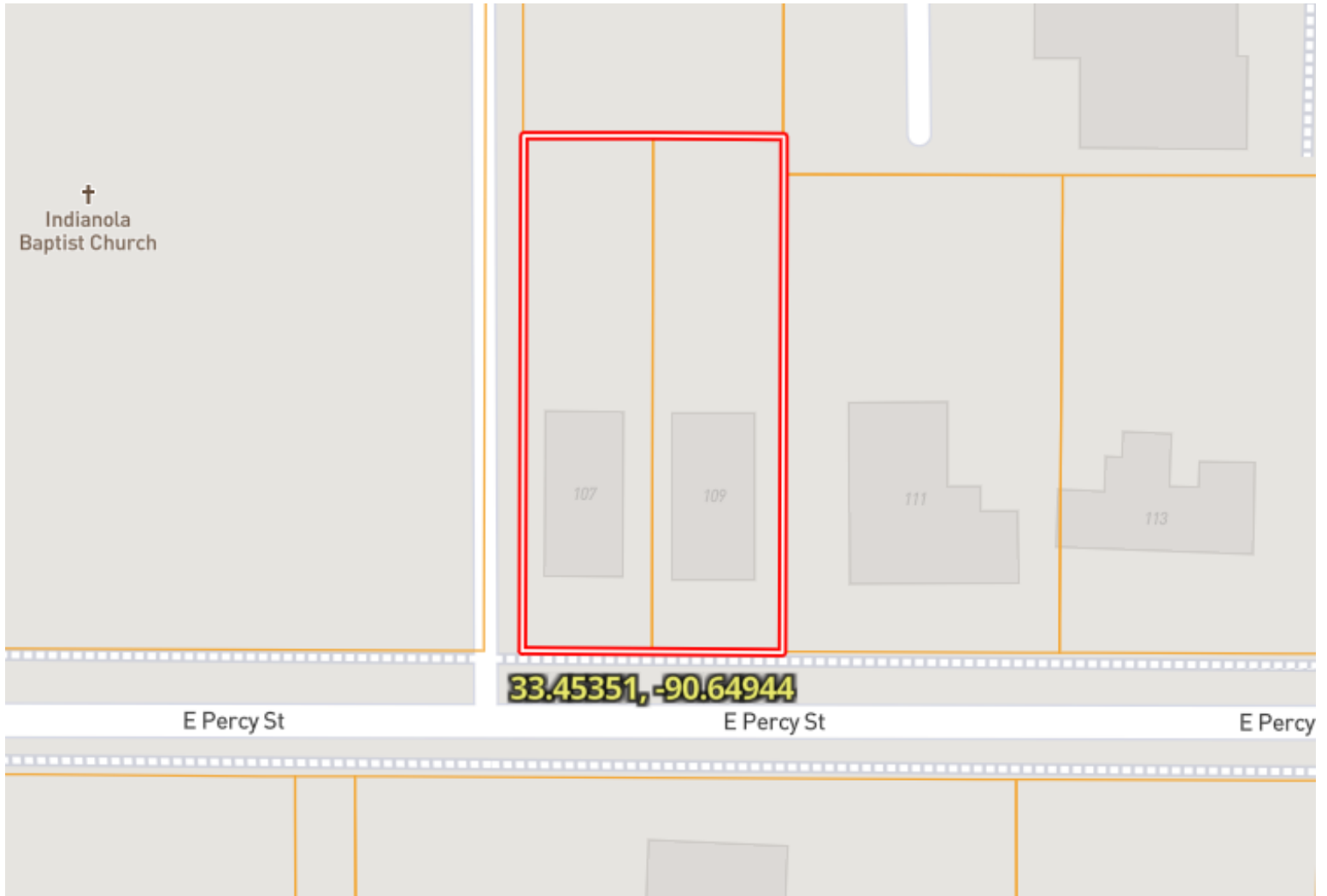
A Real Estate Expert You Can Trust

TomSmithLandandHomes.com

Information is believed to be accurate but not guaranteed.



OWNERSHIP MAP



EMERSON
LOVELACE

REALTOR®

Office: 662.441.2500

Cell: 601.715.3302

Emerson@TomSmithLand.com



Expect More. Get More.

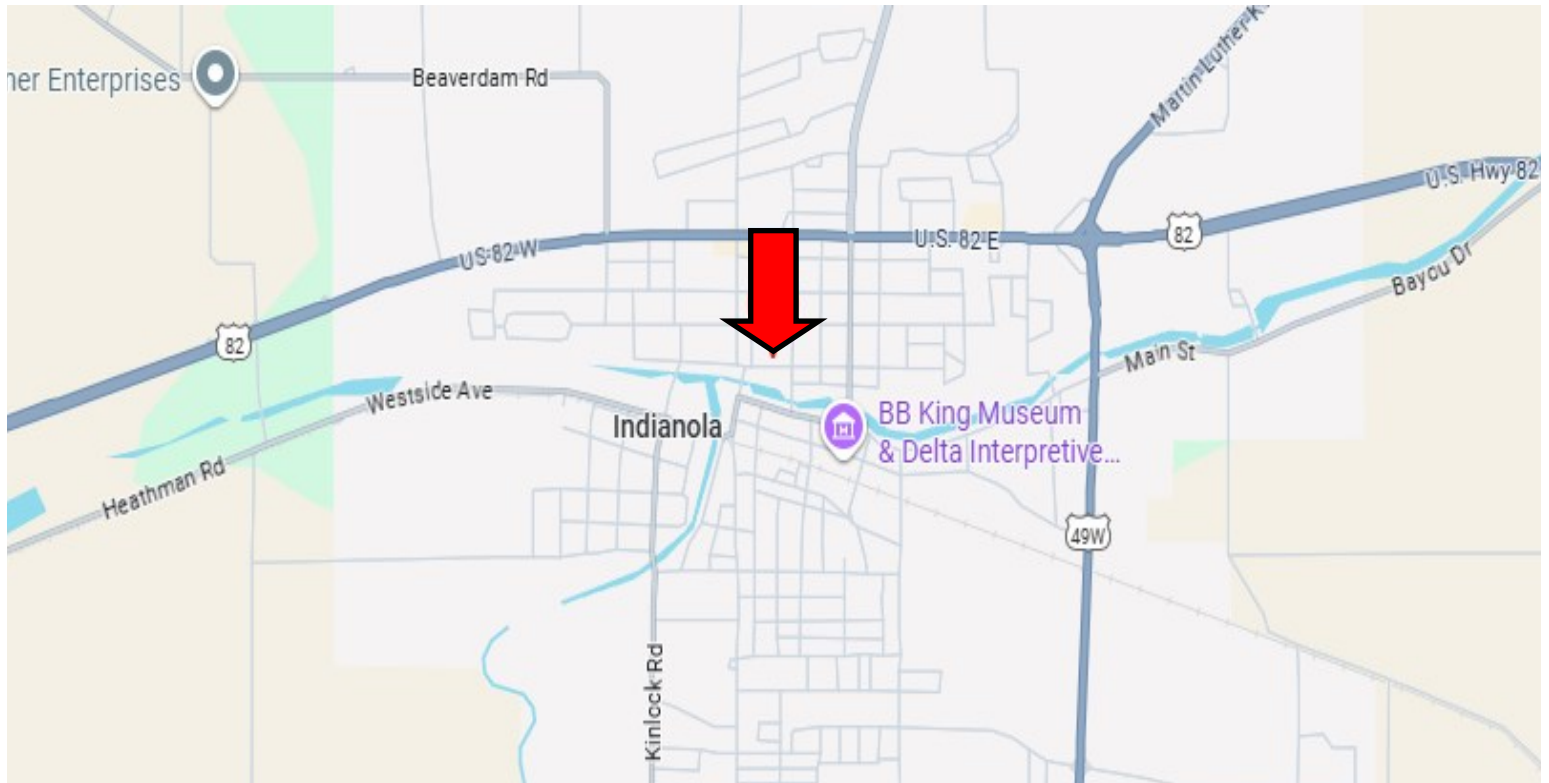
A Real Estate Expert You Can Trust

TomSmithLandandHomes.com

Information is believed to be accurate but not guaranteed.



DIRECTIONAL MAP



Address: 107 & 109 East Percy St. Indianola, MS 38751

Directions from the intersection of Hwy 49 & Hwy 82 in Indianola, MS:

Travel West on Hwy 82 for approximately 0.7 miles, turn left onto N. Sunflower Ave. In 0.3 miles turn right onto E. Percy St and in 0.2 miles the destination is on the right. [Click for Google Map directions.](#)



**EMERSON
LOVELACE**

REALTOR®

Office: 662.441.2500

Cell: 601.715.3302

Emerson@TomSmithLand.com



Expect More. Get More.

A Real Estate Expert You Can Trust

TomSmithLandandHomes.com

Information is believed to be accurate but not guaranteed.

