

# Homesite in Tallahatchie County

**Teasdale Road, Charleston, MS 38921**

**13± Acres**

**\$85,000**



**Explore this scenic 13+/- acre homesite in Tallahatchie County, just off Teasdale Road in Charleston, MS. This property features pastureland—an ideal setting for your custom dream home. Contact Anthony Steen today to schedule your private tour of this exceptional property!**



**ANTHONY  
STEEN**

REALTOR®

Office: 601.898.2772

Cell: 662.645.5151

[Anthony@TomSmithLand.com](mailto:Anthony@TomSmithLand.com)



Expect More. Get More.

**A Real Estate Expert You Can Trust**

[TomSmithLandandHomes.com](http://TomSmithLandandHomes.com)

Information is believed to be accurate but not guaranteed.







**A Real Estate Expert**  
*You Can Trust!*

**ANTHONY STEEN**

REALTOR®

O: 601.898.2772 C: 662.645.5151

Anthony@TomSmithLand.com

TomSmithLandandHomes.com

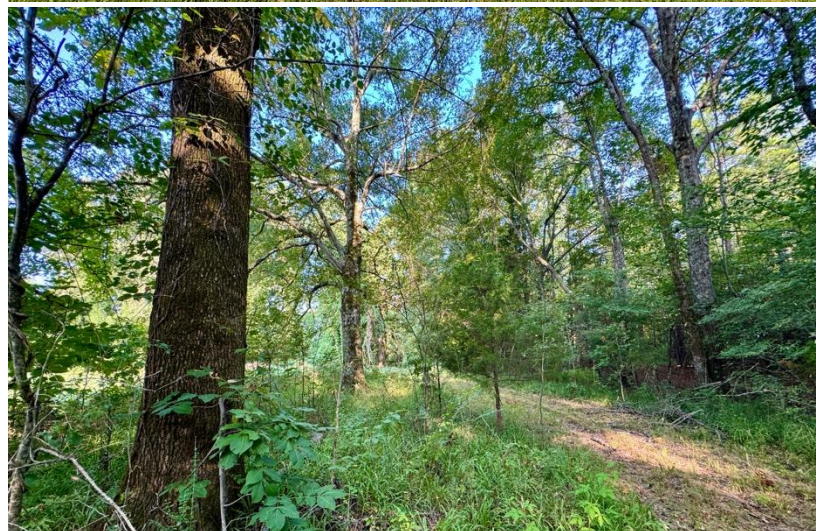


Expect More. Get More.



Information is believed to be accurate but not guaranteed.





**A Real Estate Expert**  
*You Can Trust!*

**ANTHONY STEEN**  
REALTOR®

O: 601.898.2772 C: 662.645.5151

[Anthony@TomSmithLand.com](mailto:Anthony@TomSmithLand.com)

[TomSmithLandandHomes.com](http://TomSmithLandandHomes.com)



Expect More. Get More.

Information is believed to be accurate but not guaranteed.





# AERIAL MAP | [Click for the Interactive Map](#)



**A Real Estate Expert**  
*You Can Trust!*

**ANTHONY STEEN**  
REALTOR®

O: 601.898.2772 C: 662.645.5151

Anthony@TomSmithLand.com

TomSmithLandandHomes.com

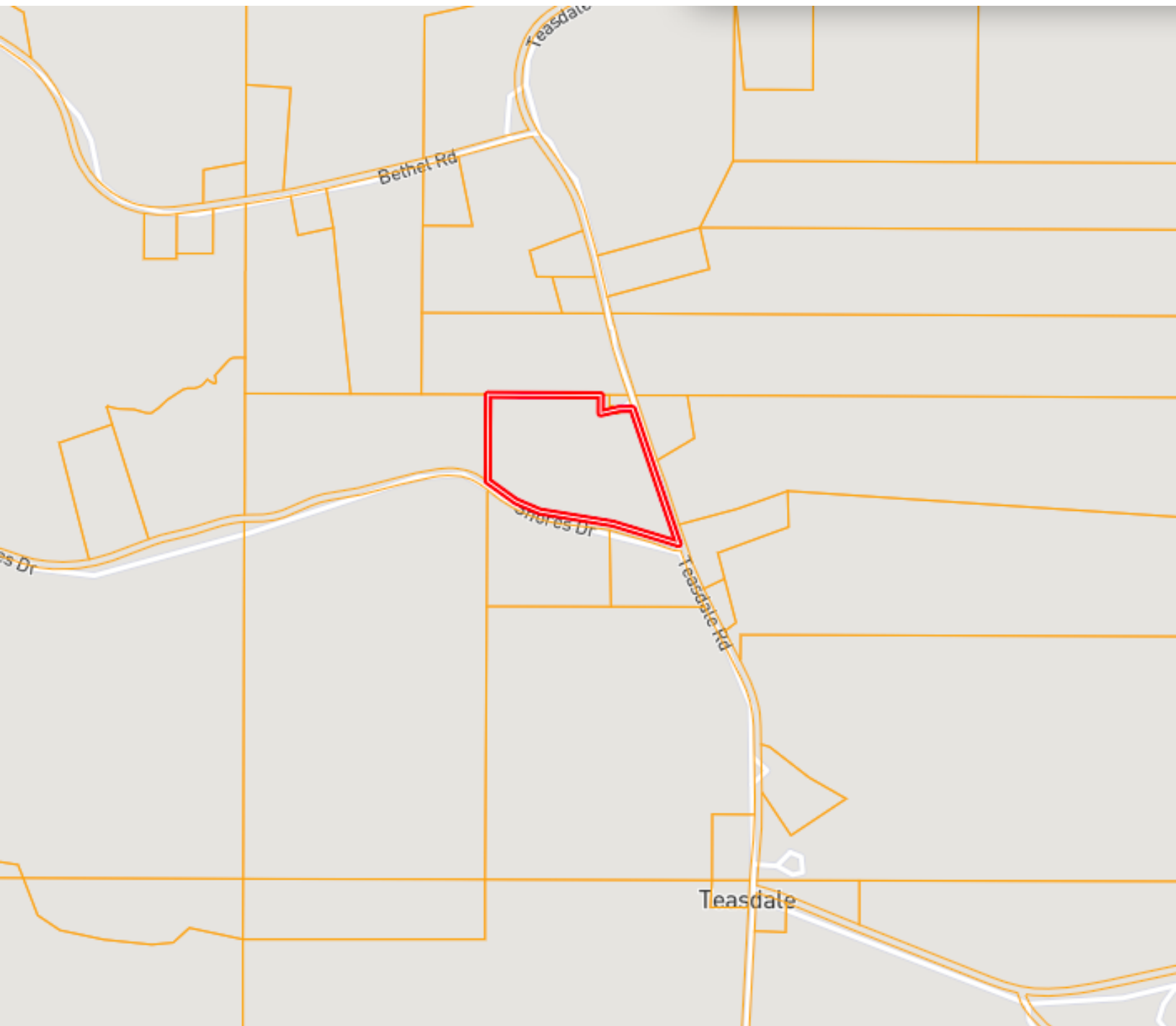


Expect More. Get More.

Information is believed to be accurate but not guaranteed.



# OWNERSHIP MAP



**A Real Estate Expert**  
*You Can Trust!*

**ANTHONY STEEN**  
REALTOR®

O: 601.898.2772 C: 662.645.5151

Anthony@TomSmithLand.com

TomSmithLandandHomes.com



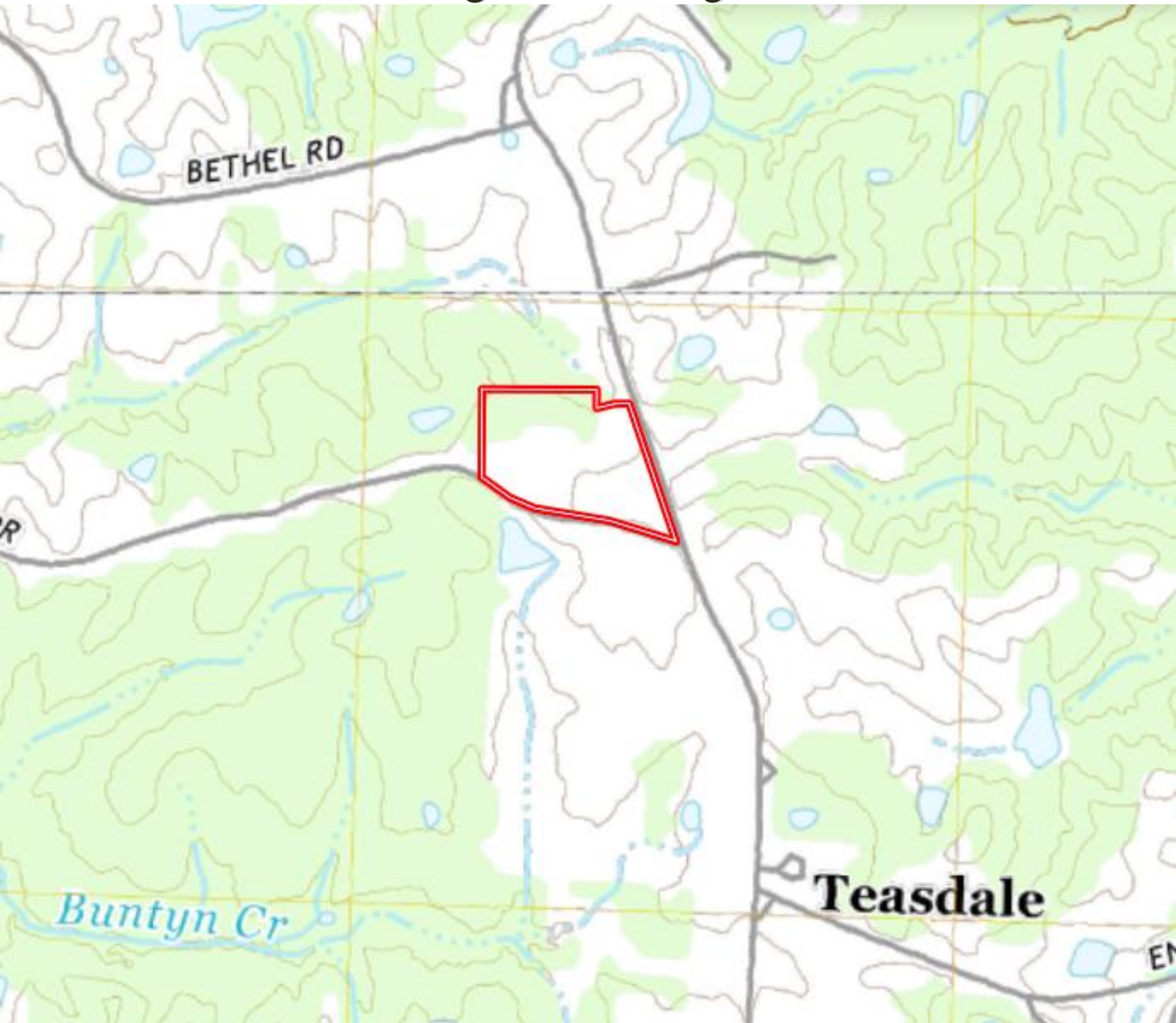
Expect More. Get More.

Information is believed to be accurate but not guaranteed.





# TOPOGRAPHY MAP



**A Real Estate Expert**  
*You Can Trust!*

**ANTHONY STEEN**  
REALTOR®

O: 601.898.2772 C: 662.645.5151

Anthony@TomSmithLand.com

TomSmithLandandHomes.com



Expect More. Get More.



Information is believed to be accurate but not guaranteed.



# SOIL MAP



SOIL CODE	SOIL DESCRIPTION	ACRES	%	CPI	NCCPI	CAP
MeD3	Memphis silt loam, 5 to 12 percent slopes, severely eroded	5.48	40.8	0	76	4e
MeE3	Memphis silt loam, 12 to 17 percent slopes, severely eroded	2.76	20.55	0	71	6e
MeB2	Memphis silt loam, 2 to 5 percent slopes, moderately eroded, northern phase	2.41	17.94	0	80	2e
MeC2	Memphis silt loam, 5 to 8 percent slopes, eroded	1.31	9.75	0	82	3e
Vc	Vicksburg silt loam	0.88	6.55	0	90	2w
W	Water	0.44	3.28	0	-	-
LoD2	Loring silt loam, 8 to 12 percent slopes, moderately eroded, east	0.17	1.27	0	44	6e
TOTALS		13.45(*)	100%	-	74.41	3.84

**A Real Estate Expert**  
*You Can Trust!*

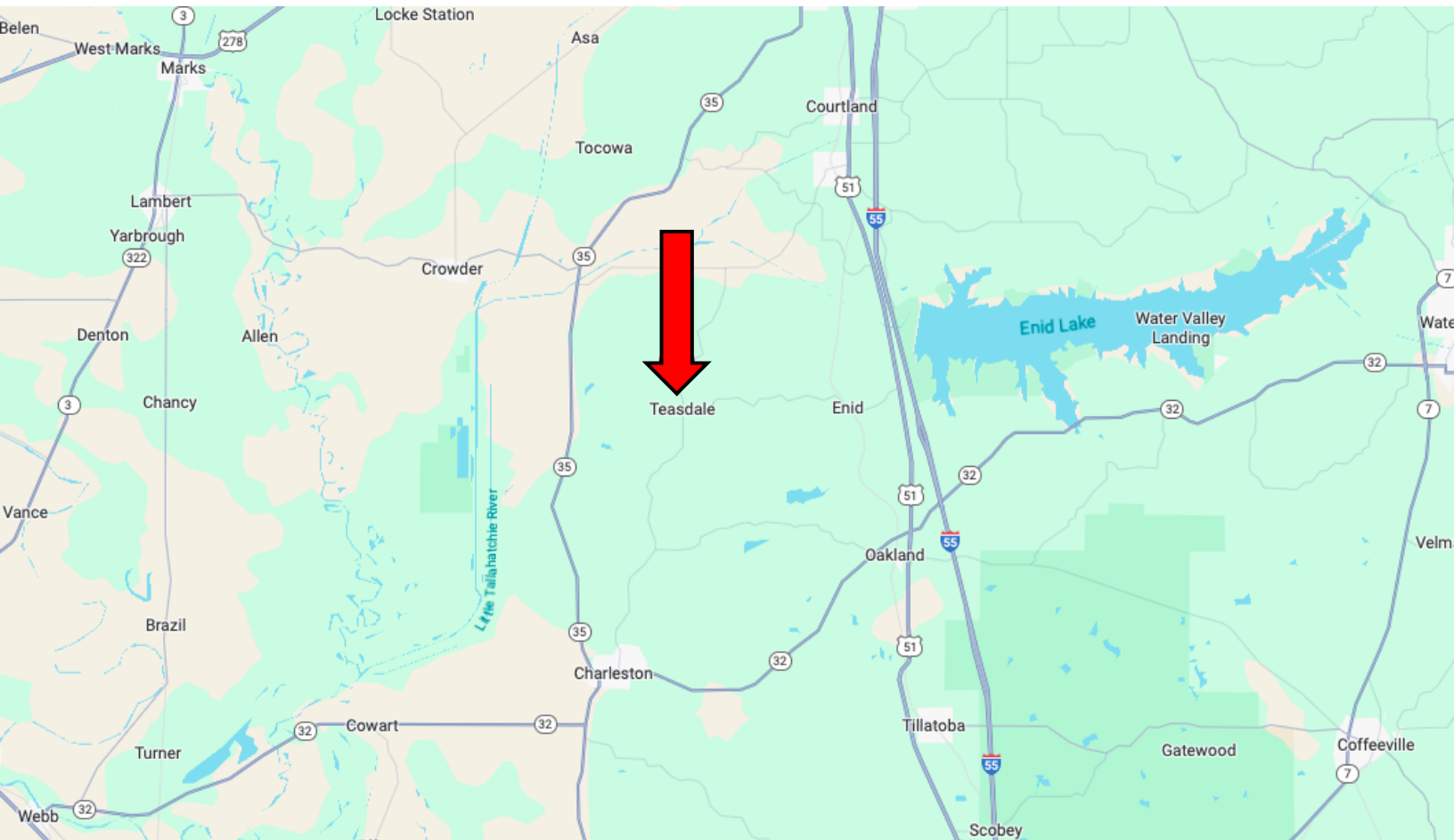
**ANTHONY STEEN**  
REALTOR®  
O: 601.898.2772 C: 662.645.5151  
Anthony@TomSmithLand.com  
TomSmithLandandHomes.com

**Tom Smith**  
**LAND AND HOMES**  
Expect More. Get More.

Information is believed to be accurate but not guaranteed.

LandReport  
2011-2025  
AMERICA'S  
**BEST**  
BROKERAGES

# DIRECTIONAL MAP



**Address: Teasdale Road, Charleston, MS 38921**

**Directions from Hwy 32 and Hwy 35, Charleston, MS:**

**Travel east on Hwy 32 for 0.6 miles. Turn left onto Martin Luther King Drive for 0.5 miles. Continue onto Teasdale Road. After 8.5 miles, the land will be on the left. [Google Maps Link](#)**



**ANTHONY  
STEEN**

REALTOR®

Office: 601.898.2772

Cell: 662.645.5151

[Anthony@TomSmithLand.com](mailto:Anthony@TomSmithLand.com)



Expect More. Get More.

**A Real Estate Expert You Can Trust**

[TomSmithLandandHomes.com](http://TomSmithLandandHomes.com)

Information is believed to be accurate but not guaranteed.

