

Move-In Ready 5-Bed, 3.5-Bath Home

361 Laughlin Road, Boyle, MS | \$447,900



Welcome to this beautiful brick home featuring 5 bedrooms and 3.5 bathrooms in Bolivar County, MS—perfect for family living and entertaining. The 3,128± SF home was built in 2014. The open-concept layout includes a well-designed kitchen with stainless steel appliances, a gas cooktop, ample counter space, and a large walk-in pantry, flowing seamlessly into the spacious living area. The home offers flexibility and comfort with 4 bedrooms and 2.5 bathrooms on the main level, plus a private upstairs bedroom and full bath—ideal for guests or a home office. Step outside to the covered back patio and enjoy peaceful Delta sunsets from your expansive 1-acre lot, offering plenty of room to play, entertain, or relax. The property also features ample space to build a workshop or additional structure. Don't miss this rare opportunity—call Tracey Bell today for more details or to schedule your private showing!



**TRACEY
BELL**

MANAGING BROKER

Office: 662.441.2500

Cell: 662.719.4720

Tracey@TomSmithLand.com



Expect More. Get More.

A Real Estate Expert You Can Trust

TomSmithLandandHomes.com

Information is believed to be accurate but not guaranteed.





A Real Estate Expert
You Can Trust!

TRACEY BELL

MANAGING BROKER

O: 662.441.2500 C: 662.719.4720

Tracey@TomSmithLand.com

TomSmithLandandHomes.com

**Tom
Smith
LAND AND
HOMES**

Expect More. Get More.

LandReport
2011-2025
AMERICA'S
BEST
BROKERAGES

Information is believed to be accurate but not guaranteed.



The spacious primary bedroom features an en-suite bathroom with a large jetted tub, stand-alone shower, two vanities, and his-and-her closets.

A Real Estate Expert You Can Trust!

TRACEY BELL

MANAGING BROKER

O: 662.441.2500 C: 662.719.4720

Tracey@TomSmithLand.com

TomSmithLandandHomes.com

**Tom
Smith
LAND AND
HOMES**

Expect More. Get More.

LandReport
2011-2025
AMERICA'S
BEST
BROKERAGES

Information is believed to be accurate but not guaranteed.



A Real Estate Expert
You Can Trust!

TRACEY BELL

MANAGING BROKER

O: 662.441.2500 C: 662.719.4720

Tracey@TomSmithLand.com

TomSmithLandandHomes.com

Tom Smith
LAND AND HOMES

Expect More. Get More.

LandReport
2011-2025
AMERICA'S
BEST
BROKERAGES

Information is believed to be accurate but not guaranteed.



A Real Estate Expert
You Can Trust!

TRACEY BELL

MANAGING BROKER

O: 662.441.2500 C: 662.719.4720

Tracey@TomSmithLand.com

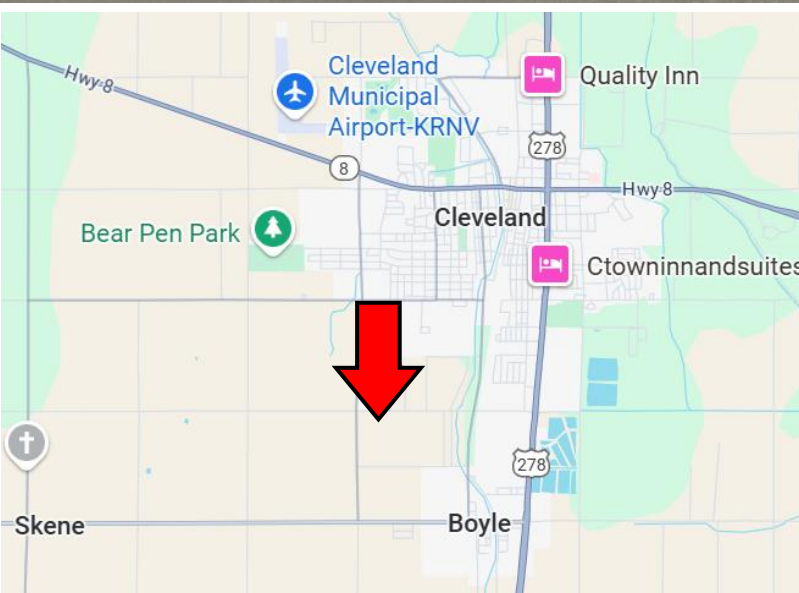
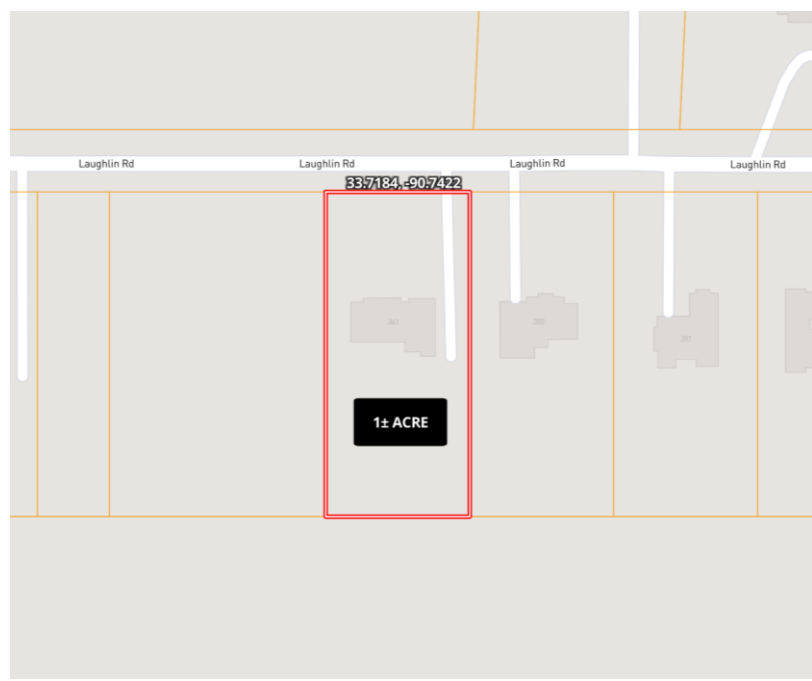
TomSmithLandandHomes.com



Expect More. Get More.



Information is believed to be accurate but not guaranteed.



Address: 361 Laughlin Road, Boyle, MS 38730

Directions from Hwy 8 & Hwy 61 in Cleveland: Travel south on HWY 61 for 2 miles, then turn right on Laughlin Road. After 1.4 miles, the home will be on the left.

[Google Maps Link](#)



**TRACEY
BELL**

MANAGING BROKER

Office: 662.441.2500

Cell: 662.719.4720

Tracey@TomSmithLand.com



Expect More. Get More.

A Real Estate Expert You Can Trust

TomSmithLandandHomes.com