

37± Acre Recreational Tract

Neshoba County, MS | \$55,500



Are you looking for a small hunting tract or just a place to get away? This 37± acre tract in Neshoba County is what you've been searching for. This property is not even a mile off Highway 19 and features road frontage on County Road 183. This tract's timber was cut approximately 15 years ago and has good topography throughout. There is quick access to Highway 25 and you are just 20 minutes from Philadelphia and Louisville, MS! Call Walker or Tyler for your private showing today!



WALKER TRANUM
MANAGING BROKER

O: 662.268.6333 | C: 662.769.1442
Walker@TomSmithHomes.com



Expect More. Get More.



TYLER KILGORE
REALTOR®

O: 662.268.6333 | C: 601.562.0688
Tyler@TomSmithLand.com

TomSmithLandandHomes.com

Information is believed to be accurate but not guaranteed.





WALKER TRANUM
MANAGING BROKER

O: 662.268.6333 | C: 662.769.1442
Walker@TomSmithHomes.com



TYLER KILGORE
REALTOR®

O: 662.268.6333 | C: 601.562.0688
Tyler@TomSmithLand.com

TomSmithLandandHomes.com

Information is believed to be accurate but not guaranteed.



AERIAL MAP



[Click Here for Interactive Map](#)



WALKER TRANUM
MANAGING BROKER

O: 662.268.6333 | C: 662.769.1442
Walker@TomSmithHomes.com

TYLER KILGORE
REALTOR®

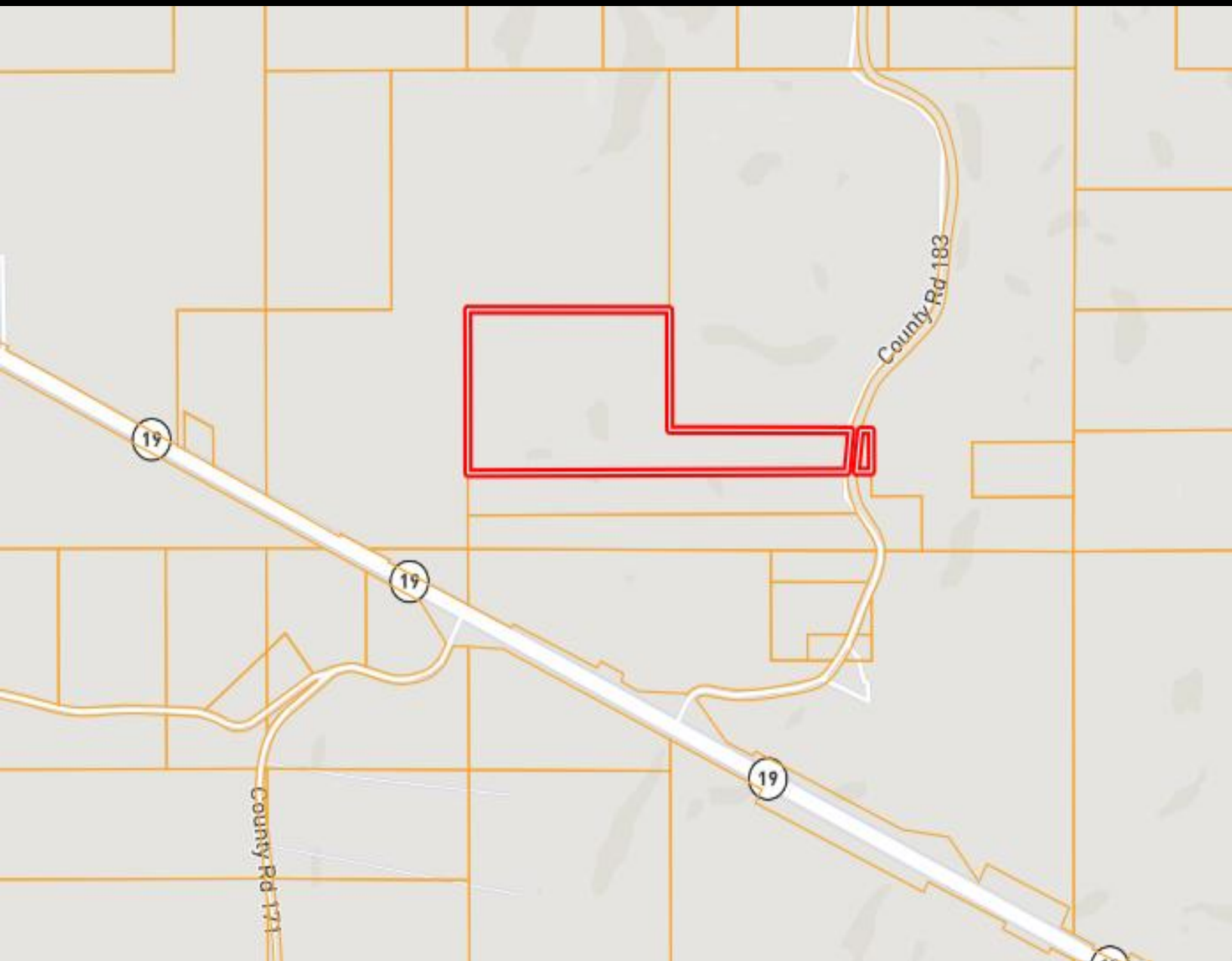
O: 662.268.6333 | C: 601.562.0688
Tyler@TomSmithLand.com

TomSmithLandandHomes.com

Information is believed to be accurate but not guaranteed.



OWNERSHIP MAP



WALKER TRANUM

MANAGING BROKER

O: 662.268.6333 | C: 662.769.1442

Walker@TomSmithHomes.com



TYLER KILGORE

REALTOR®

O: 662.268.6333 | C: 601.562.0688

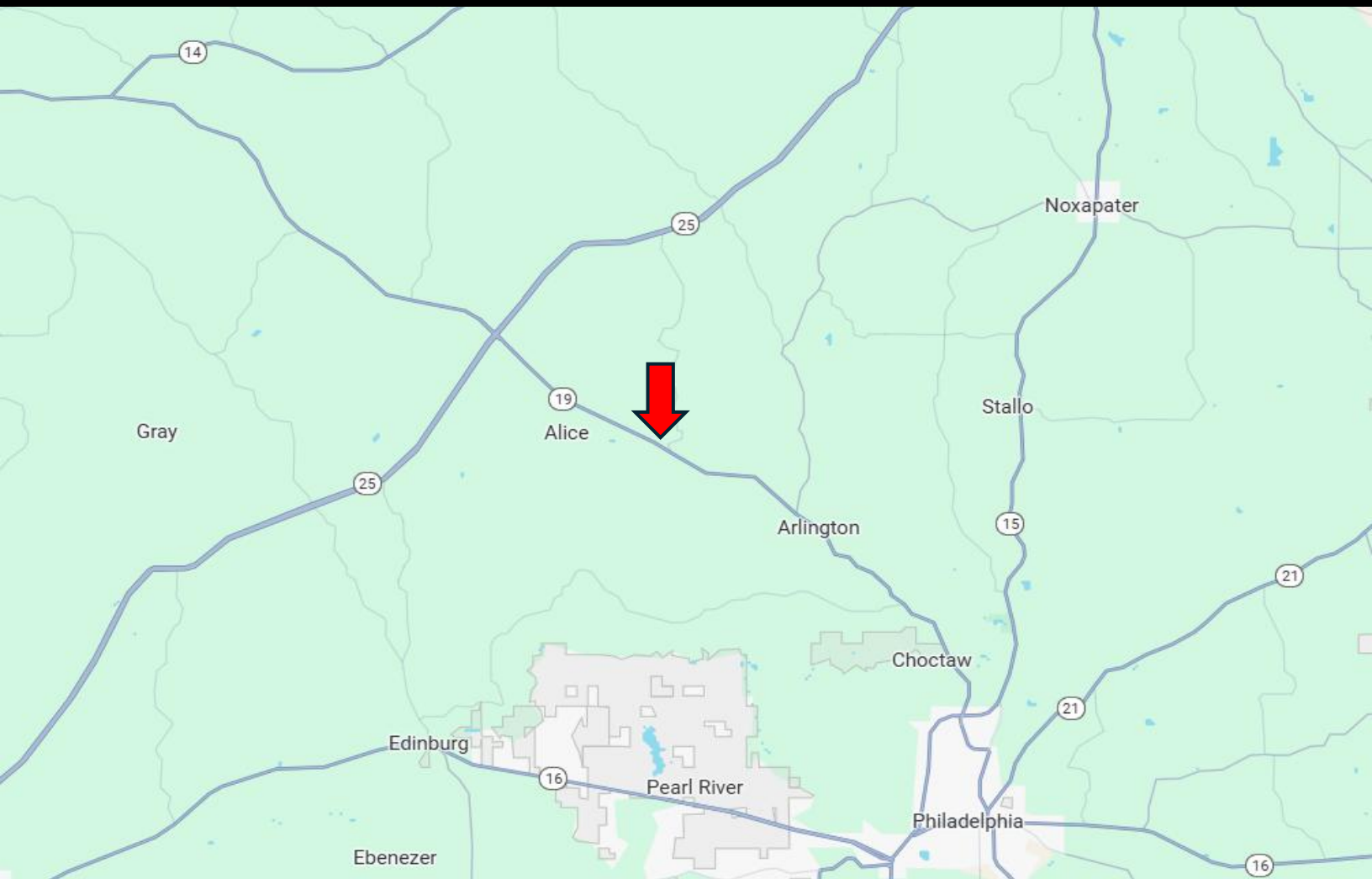
Tyler@TomSmithLand.com

TomSmithLandandHomes.com

Information is believed to be accurate but not guaranteed.



DIRECTIONAL MAP



Directions from Philadelphia, MS: Head west on West Beacon Street toward Seedy Street for 1 mile. Then turn right onto MS-885 for .1 miles. Shortly after, turn right onto MS-15 North for 3.1 miles. Then turn right towards MS-19 North and stay on it for 12.3 miles. Turn onto County Road 183 and the property will be on your left in .25 miles. [Google Map Link](#)



WALKER TRANUM
MANAGING BROKER

O: 662.268.6333 | C: 662.769.1442
Walker@TomSmithHomes.com



TYLER KILGORE
REALTOR®

O: 662.268.6333 | C: 601.562.0688
Tyler@TomSmithLand.com

TomSmithLandandHomes.com

Information is believed to be accurate but not guaranteed.

