

Spacious 5-bed, 5-bath Home

1443 Shady Lane Clarksdale, MS 38614



\$150,000

Spacious five-bed, five-bath brick home for sale at 1443 Shady Lane in Clarksdale, Coahoma County. This corner-lot property is perfect for large families, offering 3,649 square feet of heated and cooled living space. The kitchen features double ovens, a cooktop, and plenty of cabinet space. The primary bedroom includes a private bathroom and a walk-in closet. Enjoy relaxing in the sunroom, which features a ceiling fan and ample natural light. Outside, the home includes a two-car carport, a fenced-in backyard, and a shed. Call Anthony Steen today for a private tour of this incredible property!



**ANTHONY
STEEN**

REALTOR®

Office: 601.898.2772

Cell: 662.645.5151

Anthony@TomSmithLand.com



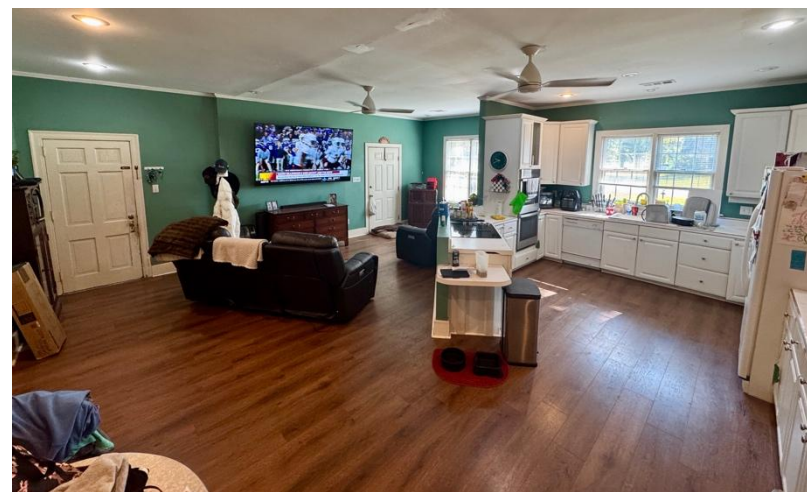
Expect More. Get More.

A Real Estate Expert You Can Trust

TomSmithLandandHomes.com

Information is believed to be accurate but not guaranteed.





A Real Estate Expert
You Can Trust!

ANTHONY STEEN

REALTOR®

O: 601.898.2772 C: 662.645.5151

Anthony@TomSmithLand.com

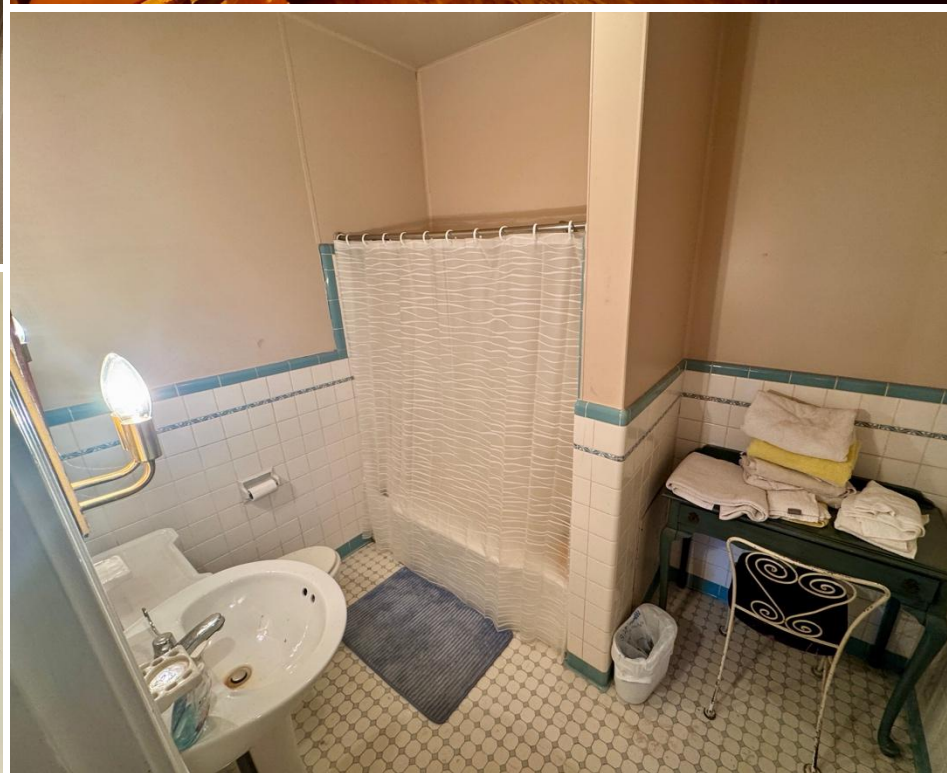
TomSmithLandandHomes.com

Tom Smith
LAND AND HOMES

Expect More. Get More.

LandReport
2011-2025
AMERICA'S
BEST
BROKERAGES

Information is believed to be accurate but not guaranteed.



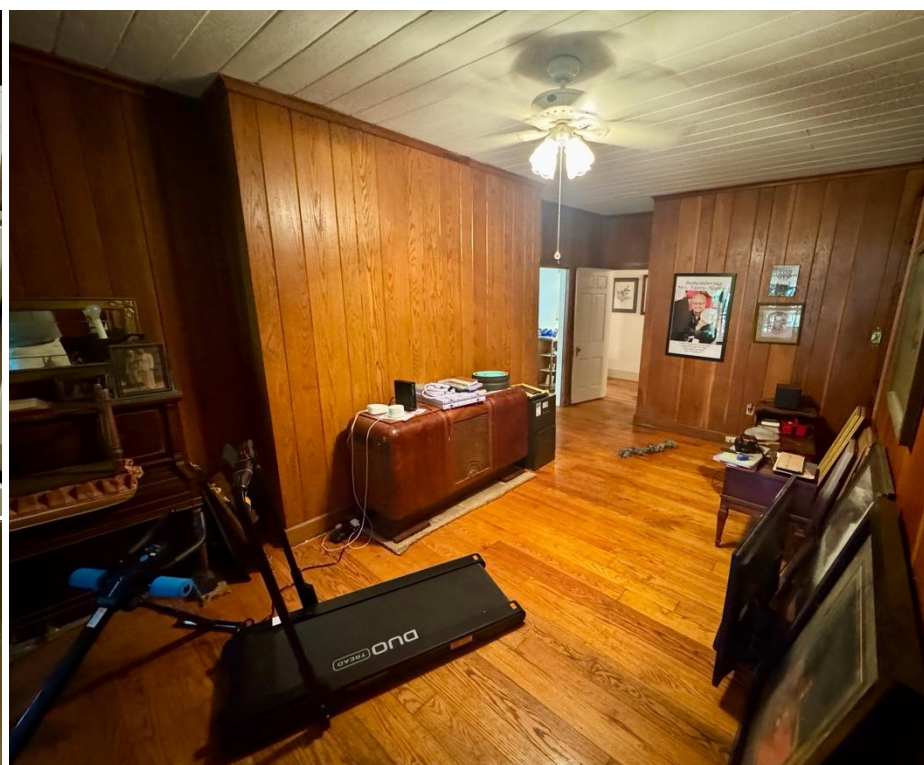
A Real Estate Expert You Can Trust!

ANTHONY STEEN
REALTOR®
O: 601.898.2772 C: 662.645.5151
Anthony@TomSmithLand.com
TomSmithLandandHomes.com

Tom Smith
LAND AND
HOMES
Expect More. Get More.

LandReport
2011-2025
AMERICA'S
BEST
BROKERAGES

Information is believed to be accurate but not guaranteed.



A Real Estate Expert
You Can Trust!

ANTHONY STEEN

REALTOR®

O: 601.898.2772 C: 662.645.5151

Anthony@TomSmithLand.com

TomSmithLandandHomes.com

Tom Smith
LAND AND HOMES

Expect More. Get More.

LandReport
2011-2025
AMERICA'S
BEST
BROKERAGES

Information is believed to be accurate but not guaranteed.



A Real Estate Expert
You Can Trust!

ANTHONY STEEN

REALTOR®

O: 601.898.2772 C: 662.645.5151

Anthony@TomSmithLand.com

TomSmithLandandHomes.com



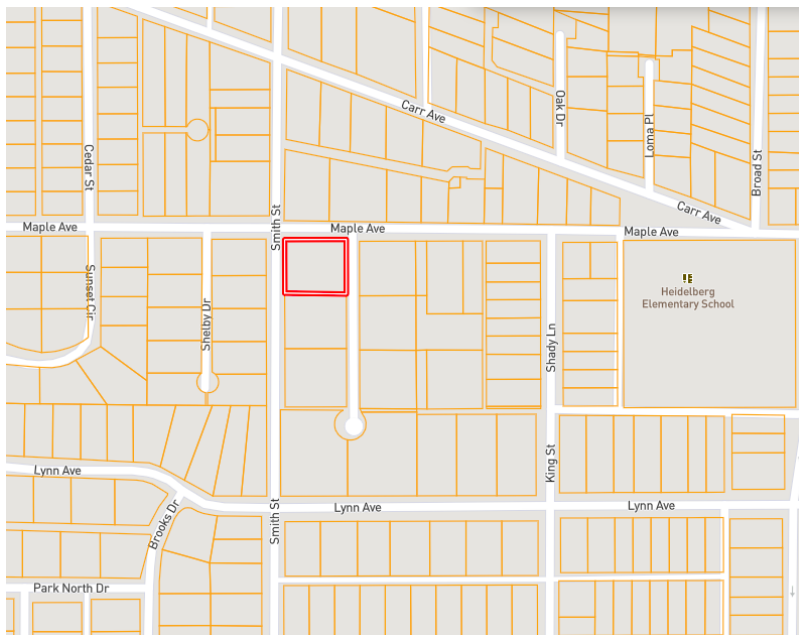
Expect More. Get More.



Information is believed to be accurate but not guaranteed.

MAPS

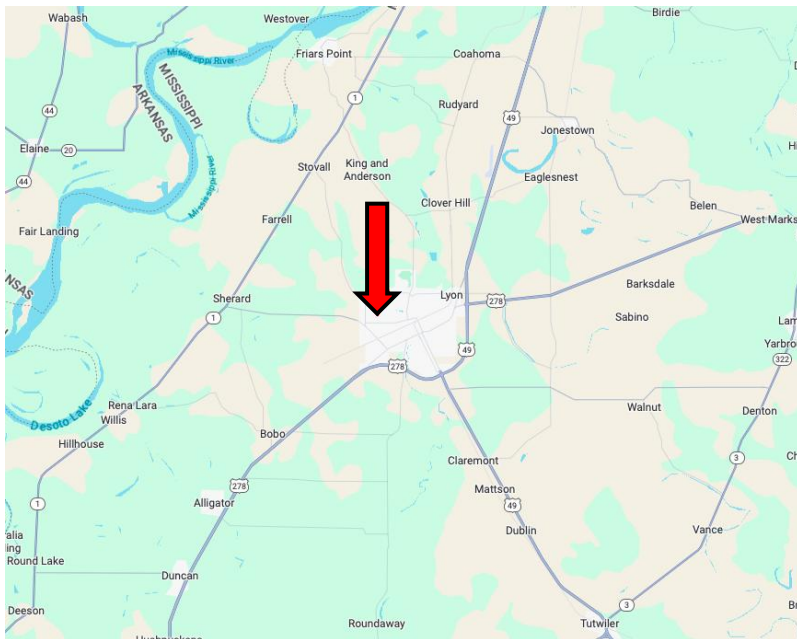
[Click for the Interactive Map](#)



Address: 1443 Shady Lane
Clarksdale, MS 38614

Directions from Hwy 49 & Hwy 278, Clarksdale, MS: Travel west on US-278 W for 0.6 miles. Continue straight onto 4th Street for 2.3 miles. Turn right onto Riverside Ave for 0.5 miles. Turn left onto Pecan Street for 0.1 miles. Take a slight right onto Maple Ave for 1 mile. Turn left onto Shady Lane. After 95 feet, the house will be on the right.

[Google Maps Link](#)



**ANTHONY
STEEN**
REALTOR®

Office: 601.898.2772

Cell: 662.645.5151

Anthony@TomSmithLand.com



Expect More. Get More.

A Real Estate Expert You Can Trust

TomSmithLandandHomes.com

Information is believed to be accurate but not guaranteed.

