

PRIME MULTIPURPOSE PROPERTY

20± ACRES IN OKTIBBEHA COUNTY, MS



\$289,000

Don't miss this rare chance to own 20± acres in Starkville, Mississippi. Located just 3 miles from Mississippi State University, this property offers multiple potential home sites, a 6± acre stocked pond, and is nestled within a gated community. With access to all utilities and ample road frontage on Hearst Road, the property is both convenient and versatile. Once part of the Highlands Plantation and formerly a golf course, it offers a unique blend of history and natural beauty. Whether you're looking to develop, build your dream home, or simply have a peaceful weekend getaway, this property is full of potential. To schedule a private showing, call or text Walker Trantum or Tom Smith today!



TOM SMITH
ALC®, BROKER

O: 601.898.2772 | C: 601.454.9397
Tom@TomSmithLand.com



Expect More. Get More.



WALKER TRANUM
MANAGING BROKER

O: 662.268.6333 | C: 662.769.1442
Walker@TomSmithHomes.com

TomSmithLandandHomes.com

Information is believed to be accurate but not guaranteed.





TOM SMITH
ALC®, BROKER

O: 601.898.2772 | C: 601.454.9397
Tom@TomSmithLand.com



WALKER TRANUM
MANAGING BROKER

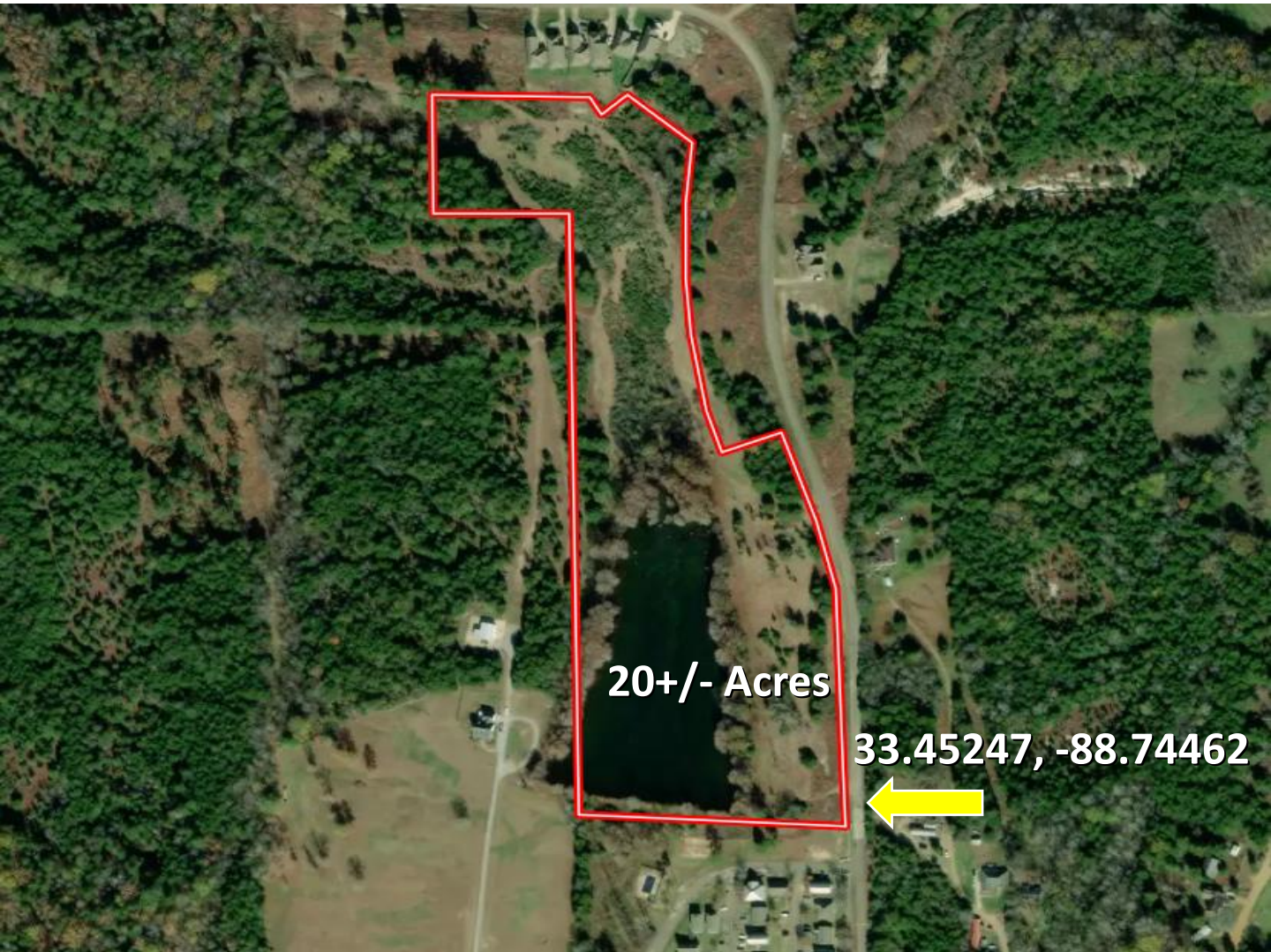
O: 662.268.6333 | C: 662.769.1442
Walker@TomSmithHomes.com

TomSmithLandandHomes.com

Information is believed to be accurate but not guaranteed.



AERIAL MAP



[Click Here for Land ID Interactive Link](#)



TOM SMITH
ALC®, BROKER

O: 601.898.2772 | C: 601.454.9397
Tom@TomSmithLand.com



Expect More. Get More.



WALKER TRANUM
MANAGING BROKER

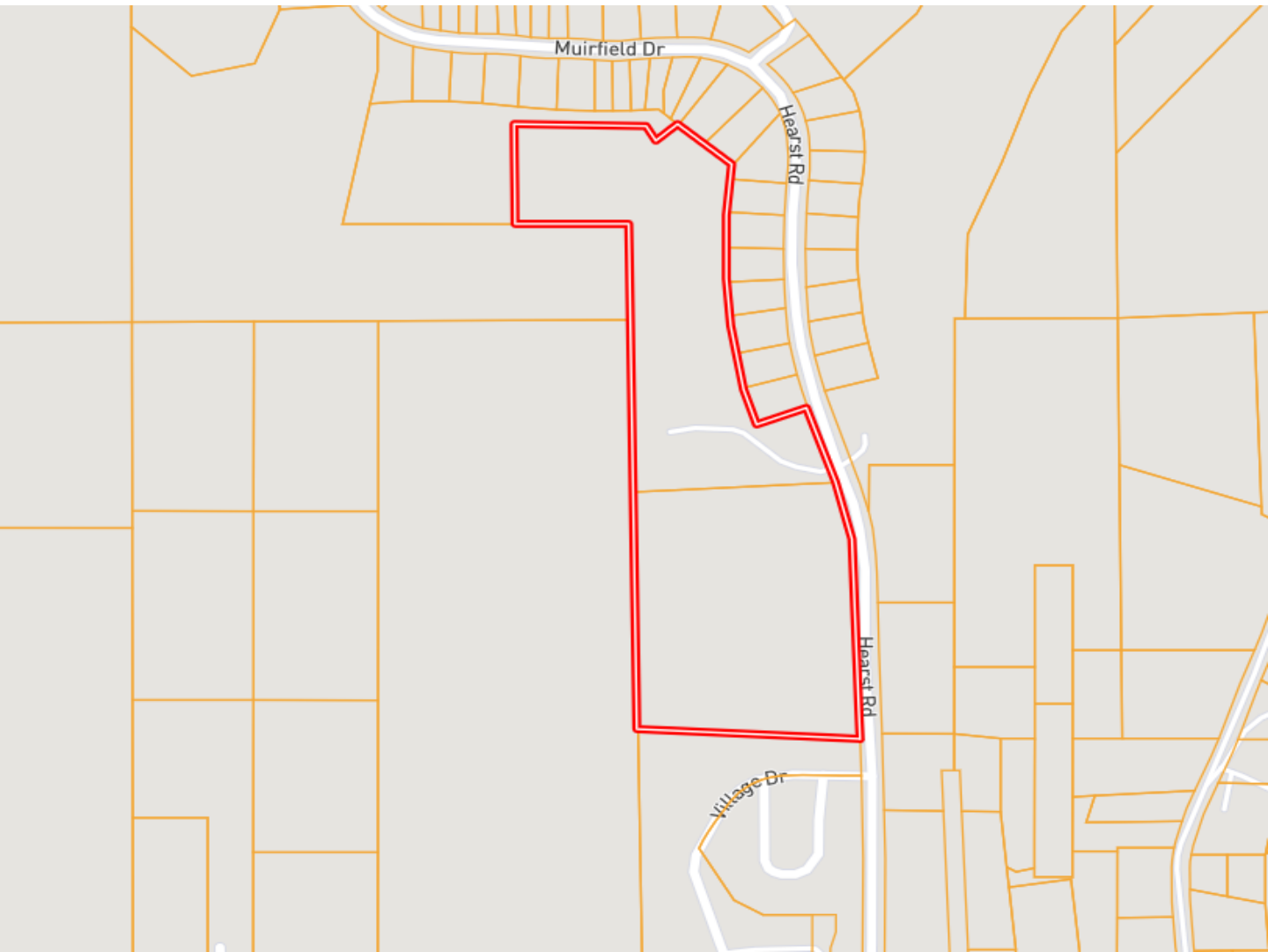
O: 662.268.6333 | C: 662.769.1442
Walker@TomSmithHomes.com

TomSmithLandandHomes.com

Information is believed to be accurate but not guaranteed.



OWNERSHIP MAP



TOM SMITH
ALC®, BROKER

O: 601.898.2772 | C: 601.454.9397
Tom@TomSmithLand.com



WALKER TRANUM
MANAGING BROKER

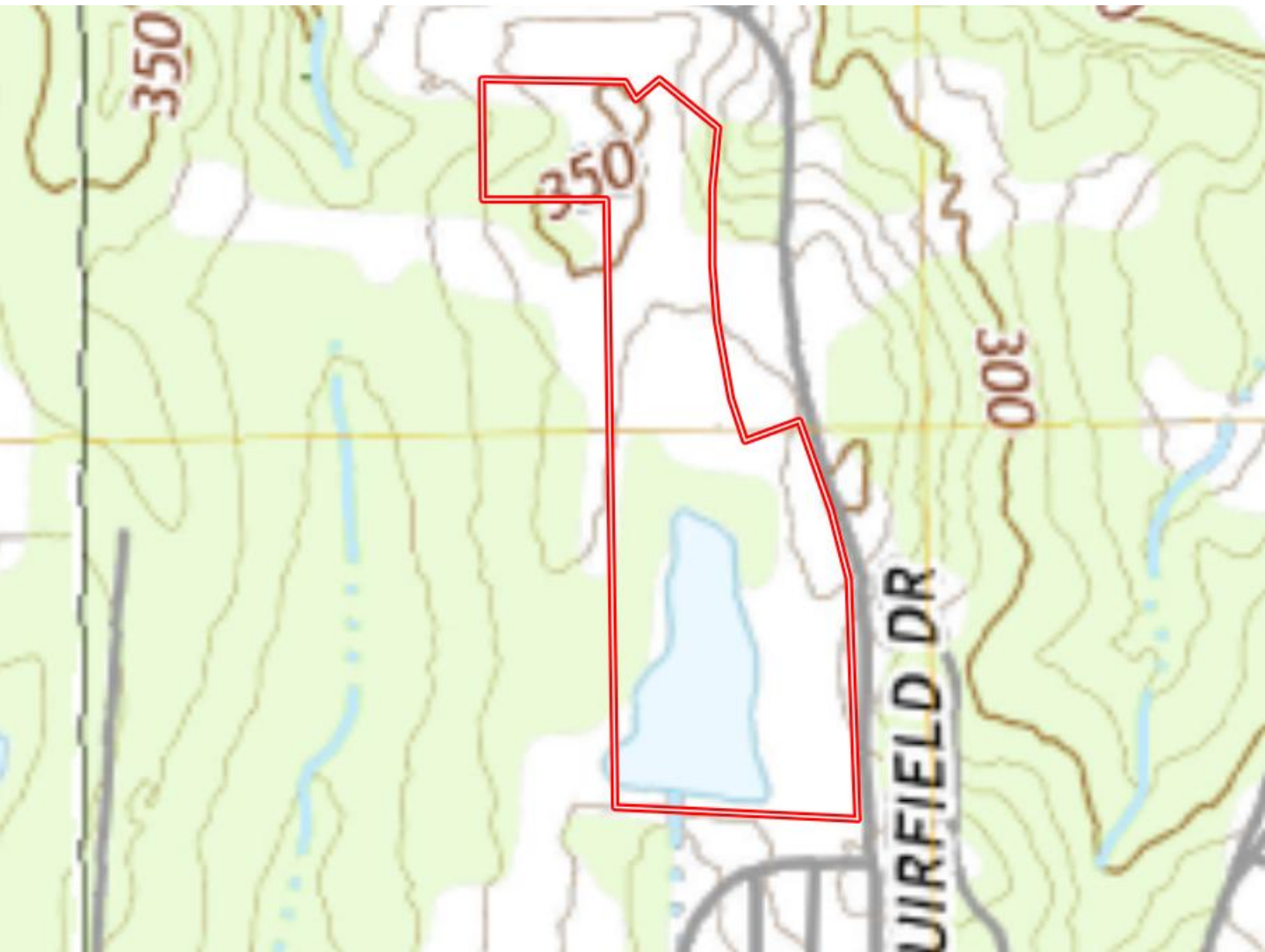
O: 662.268.6333 | C: 662.769.1442
Walker@TomSmithHomes.com

TomSmithLandandHomes.com

Information is believed to be accurate but not guaranteed.



TOPOGRAPHY MAP



TOM SMITH
ALC®, BROKER

O: 601.898.2772 | C: 601.454.9397
Tom@TomSmithLand.com



Expect More. Get More.



WALKER TRANUM
MANAGING BROKER

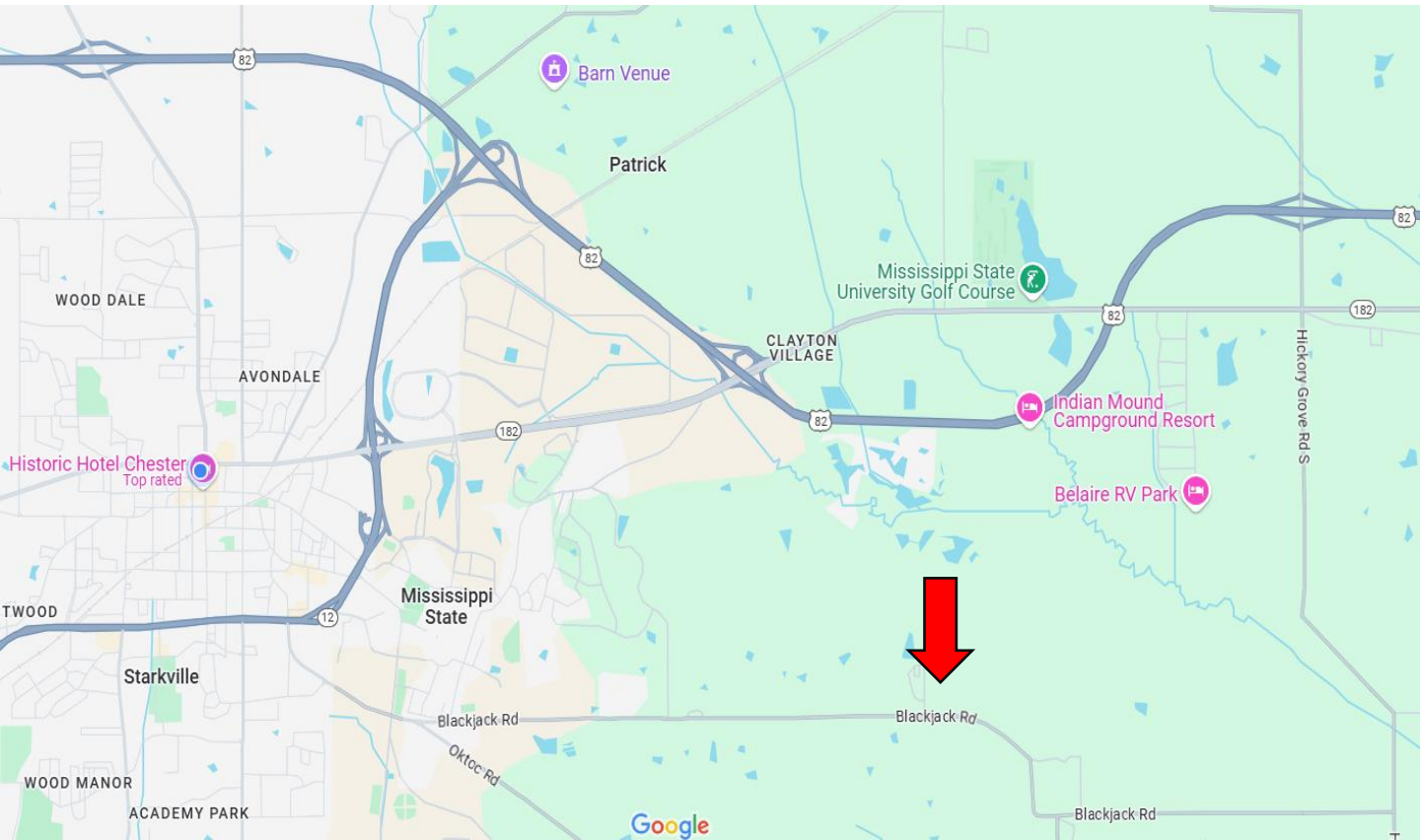
O: 662.268.6333 | C: 662.769.1442
Walker@TomSmithHomes.com

TomSmithLandandHomes.com

Information is believed to be accurate but not guaranteed.



DIRECTIONAL MAP



Directions from the intersection of Hwy 25 and Hwy 12 in Starkville, MS: Take North Jackson Street to MS-182 East/ Dr. Martin Luther King Jr Drive East for .1 miles. Turn right onto MS-182 East/ Dr. Martin Luther King Jr Drive East for 2.8 miles. After that follow Saint Andrews Lane to Muirfield Drive for 2.1 miles. The property will be on your right. [GOOGLE MAP LINK](#)



TOM SMITH
ALC®, BROKER

O: 601.898.2772 | C: 601.454.9397
Tom@TomSmithLand.com



Expect More. Get More.



WALKER TRANUM
MANAGING BROKER

O: 662.268.6333 | C: 662.769.1442
Walker@TomSmithHomes.com

TomSmithLandandHomes.com

Information is believed to be accurate but not guaranteed.

