

RECREATIONAL PROPERTY

30.84± Acres in Tippah County, MS



\$89,500



Take a look at this 30.84± acre recreational property located on CR 301 in Tippah County only 45 minutes from Collierville, TN. Wildlife is abundant on this diverse wooded tract. The timber stand is mixed pine and hardwood with most of the pine being in the sawtimber class. The north property line is Hurricane Creek. The property features a 2± acre open field with an existing shooting house and numerous interior roads to ride your ATV's. If you are looking for a home site, community water and electricity are available. Don't wait—call Tom today!



**TOM
WISEMAN**

ASSOCIATE BROKER

Office: 662.268.6333

Cell: 662.317.0467

TWiseman@TomSmithLand.com



Expect More. Get More.

A Real Estate Expert You Can Trust

TomSmithLandandHomes.com

Information is believed to be accurate but not guaranteed.





A Real Estate Expert *You Can Trust!*

TOM WISEMAN

ASSOCIATE BROKER

O: 662.268.6333 C: 662.317.0467

TWiseman@TomSmithLand.com

TomSmithLandandHomes.com



Expect More. Get More.

Information is believed to be accurate but not guaranteed.





A Real Estate Expert *You Can Trust!*

TOM WISEMAN

ASSOCIATE BROKER

O: 662.268.6333 C: 662.317.0467

TWiseman@TomSmithLand.com

TomSmithLandandHomes.com

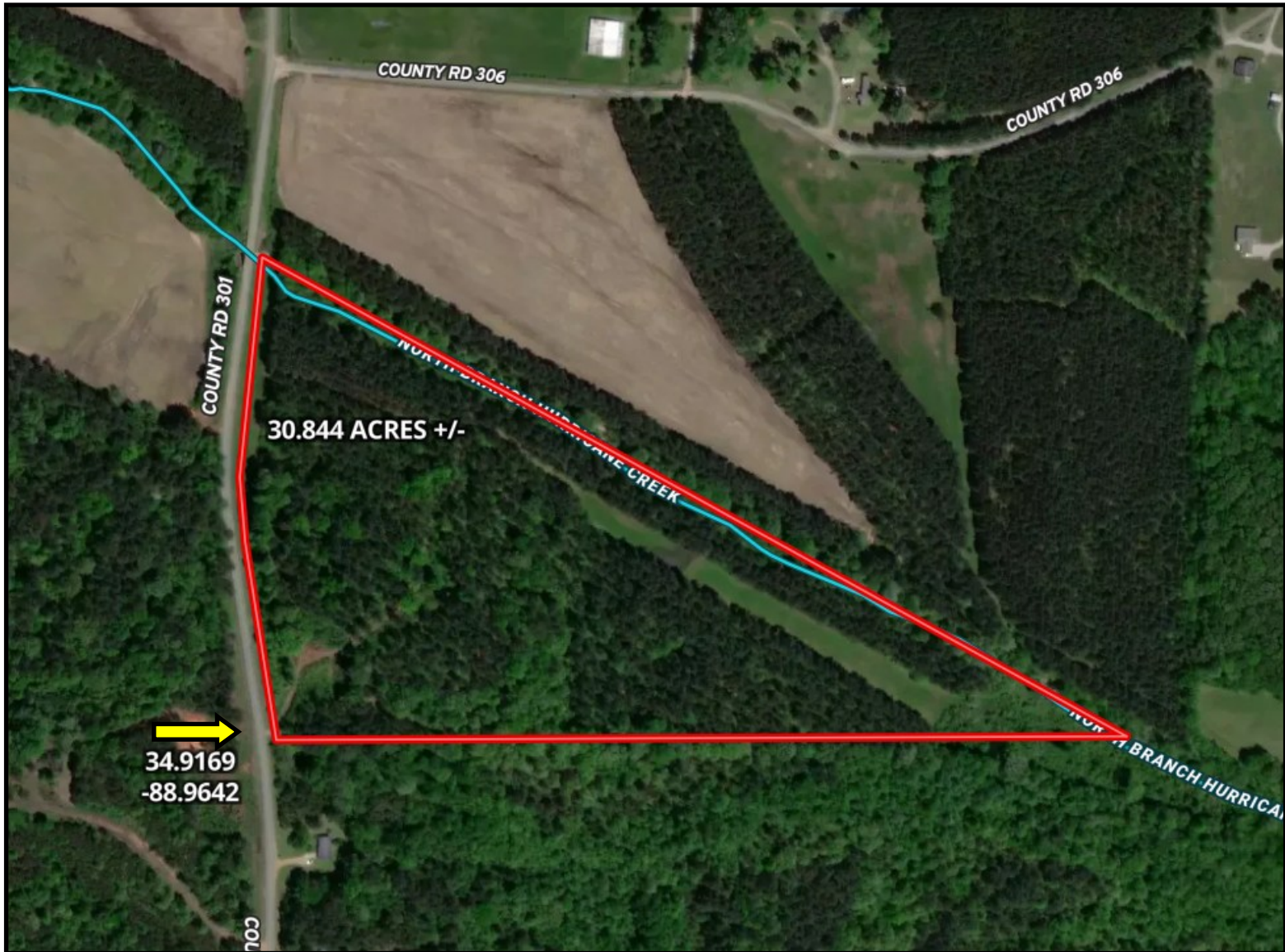


Expect More. Get More.

Information is believed to be accurate but not guaranteed.



AERIAL MAP



[Click Here for the LandId Interactive Map Link](#)

A Real Estate Expert
You Can Trust!

TOM WISEMAN

ASSOCIATE BROKER

O: 662.268.6333 C: 662.317.0467

Twiseman@TomSmithLand.com

TomSmithLandandHomes.com

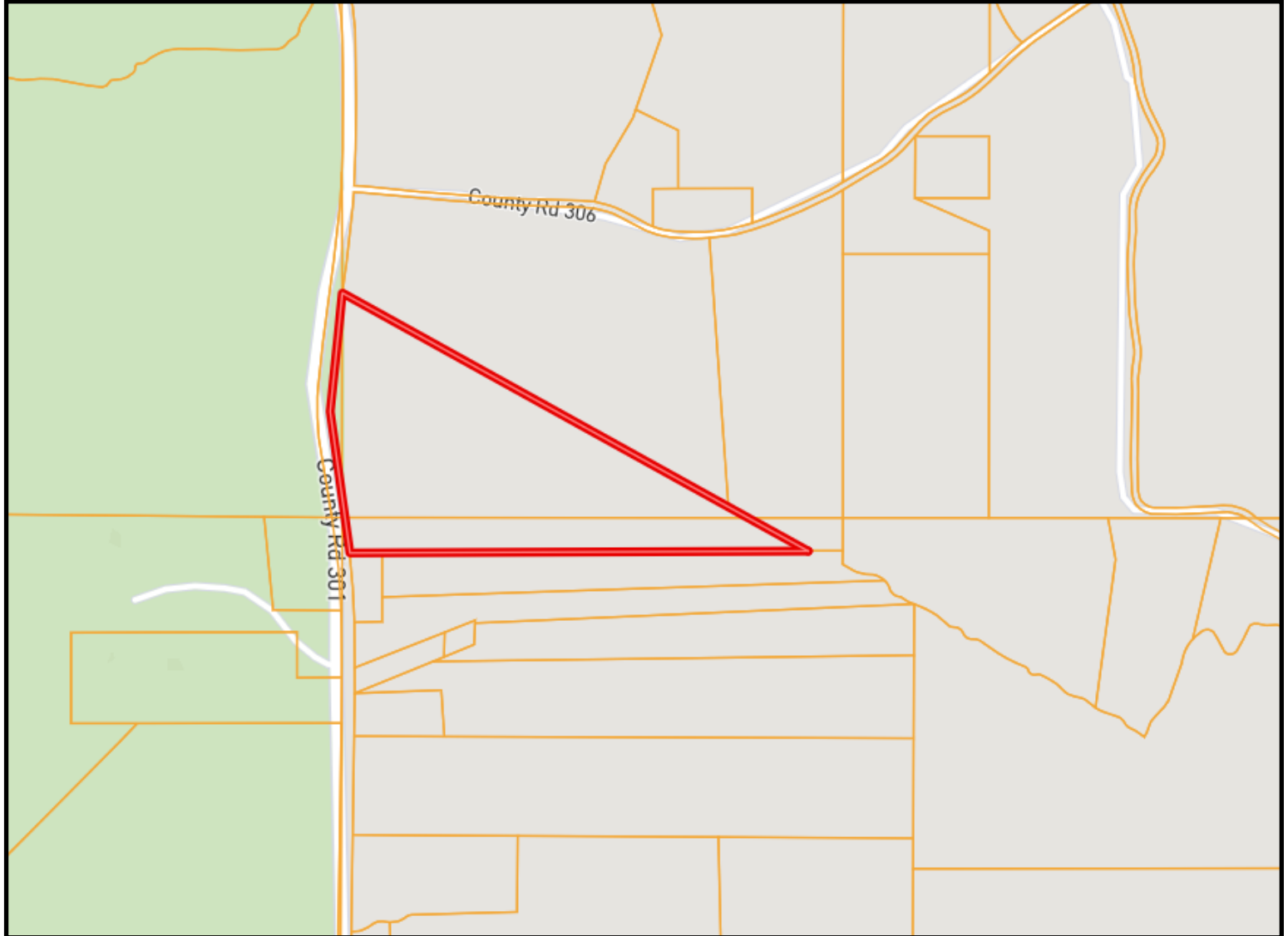


Expect More. Get More.



Information is believed to be accurate but not guaranteed.

OWNERSHIP MAP



A Real Estate Expert
You Can Trust!

TOM WISEMAN

ASSOCIATE BROKER

O: 662.268.6333 C: 662.317.0467

Twiseman@TomSmithLand.com

TomSmithLandandHomes.com

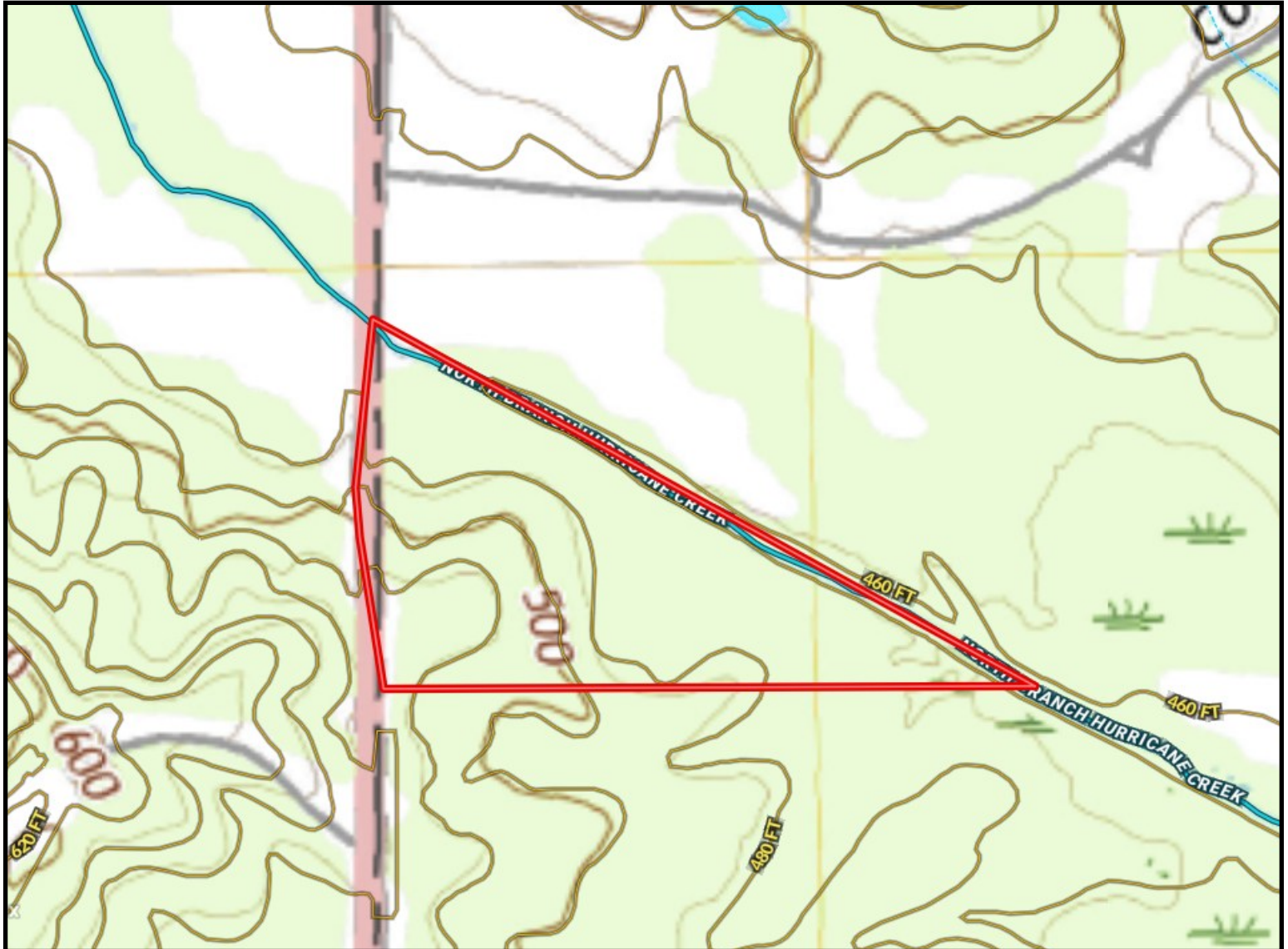


Expect More. Get More.

Information is believed to be accurate but not guaranteed.



TOPO MAP



A Real Estate Expert
You Can Trust!

TOM WISEMAN

ASSOCIATE BROKER

O: 662.268.6333 C: 662.317.0467

TWiseman@TomSmithLand.com

TomSmithLandandHomes.com

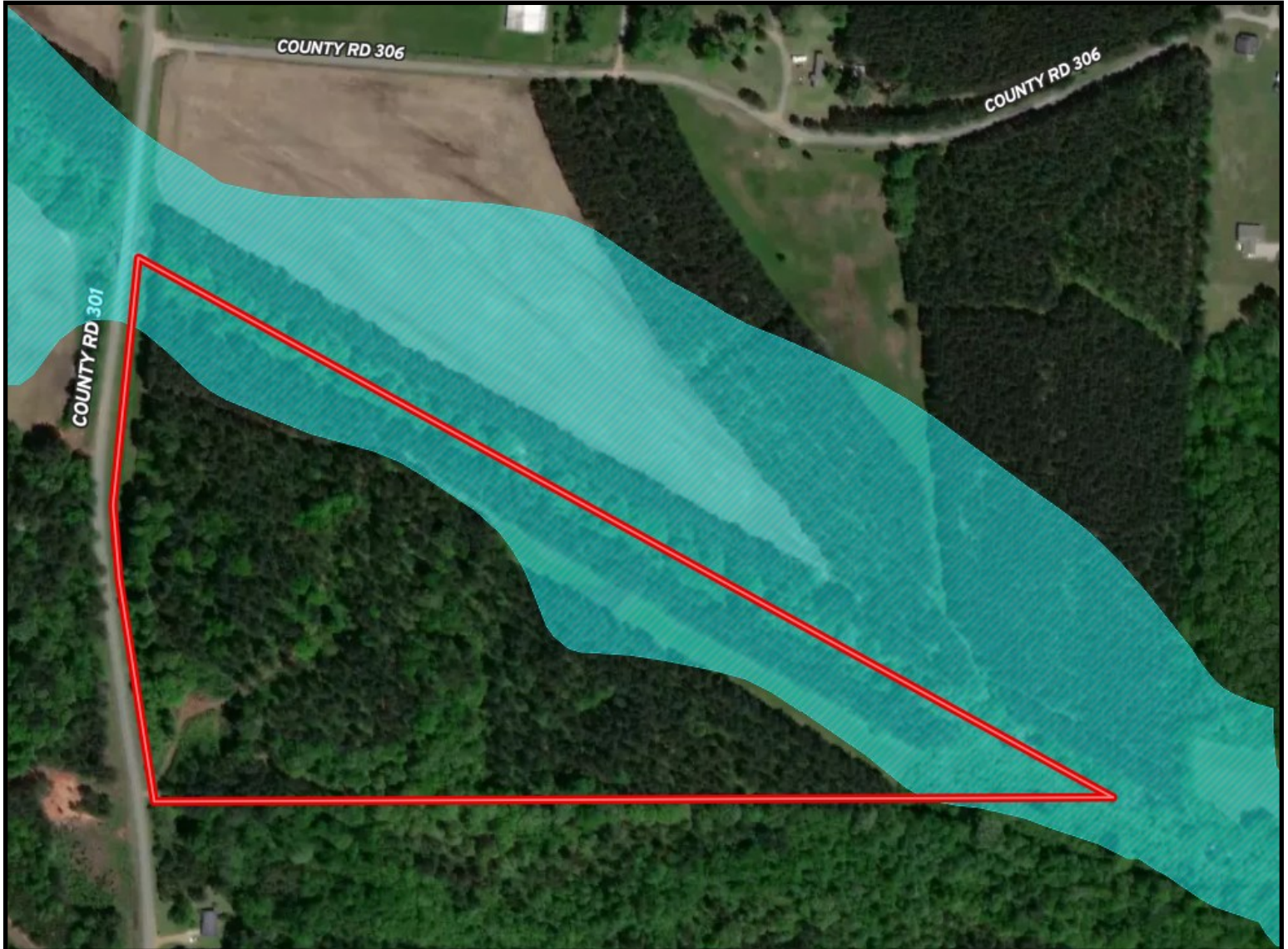
**Tom
Smith
LAND AND
HOMES**

Expect More. Get More.

2011-2014
NATIONAL
BEST
BROKERAGES

Information is believed to be accurate but not guaranteed.

FLOOD MAP



A Real Estate Expert
You Can Trust!

TOM WISEMAN

ASSOCIATE BROKER

O: 662.268.6333 C: 662.317.0467

TWiseman@TomSmithLand.com

TomSmithLandandHomes.com

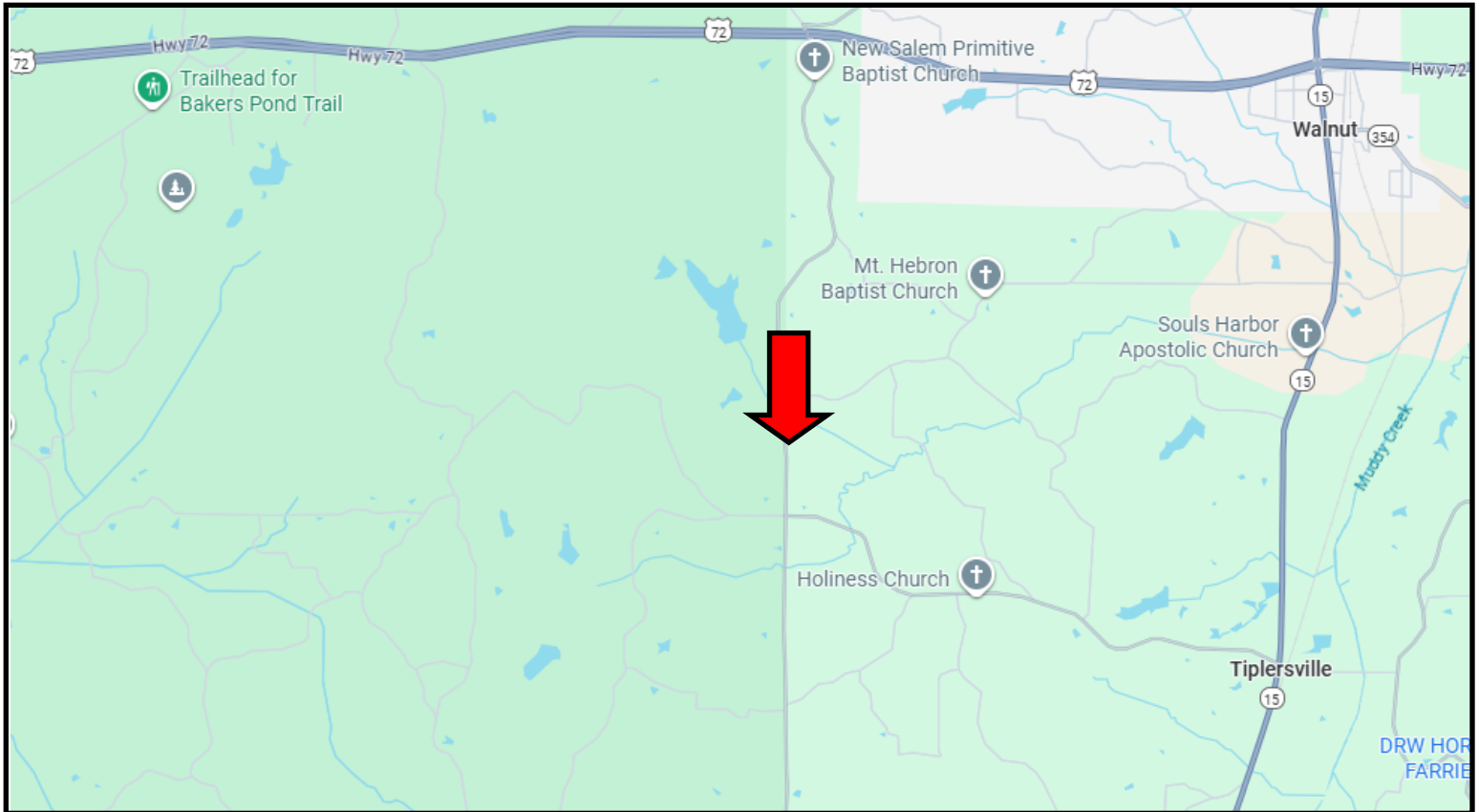


Expect More. Get More.

Information is believed to be accurate but not guaranteed.



DIRECTIONAL MAP



Directions from the Intersection of HWY 15 and Hwy 72 in Walnut, MS: Take Hwy 72 west of Hwy 15 for 3.3 miles to CR 301. Turn left and travel 2.9 miles to the property on your left. [Click for Google Maps Link](#)

Address: CR 301 Tiplersville, MS 38674



**TOM
WISEMAN**

ASSOCIATE BROKER

Office: 662.268.6333

Cell: 662.317.0467

TWiseman@TomSmithLand.com



Expect More. Get More.

A Real Estate Expert You Can Trust

TomSmithLandandHomes.com

Information is believed to be accurate but not guaranteed.

