



000 HWY 65, ANAHUAC, TX 77514
CHAMBERS COUNTY

900± ACRES | \$12,150,000



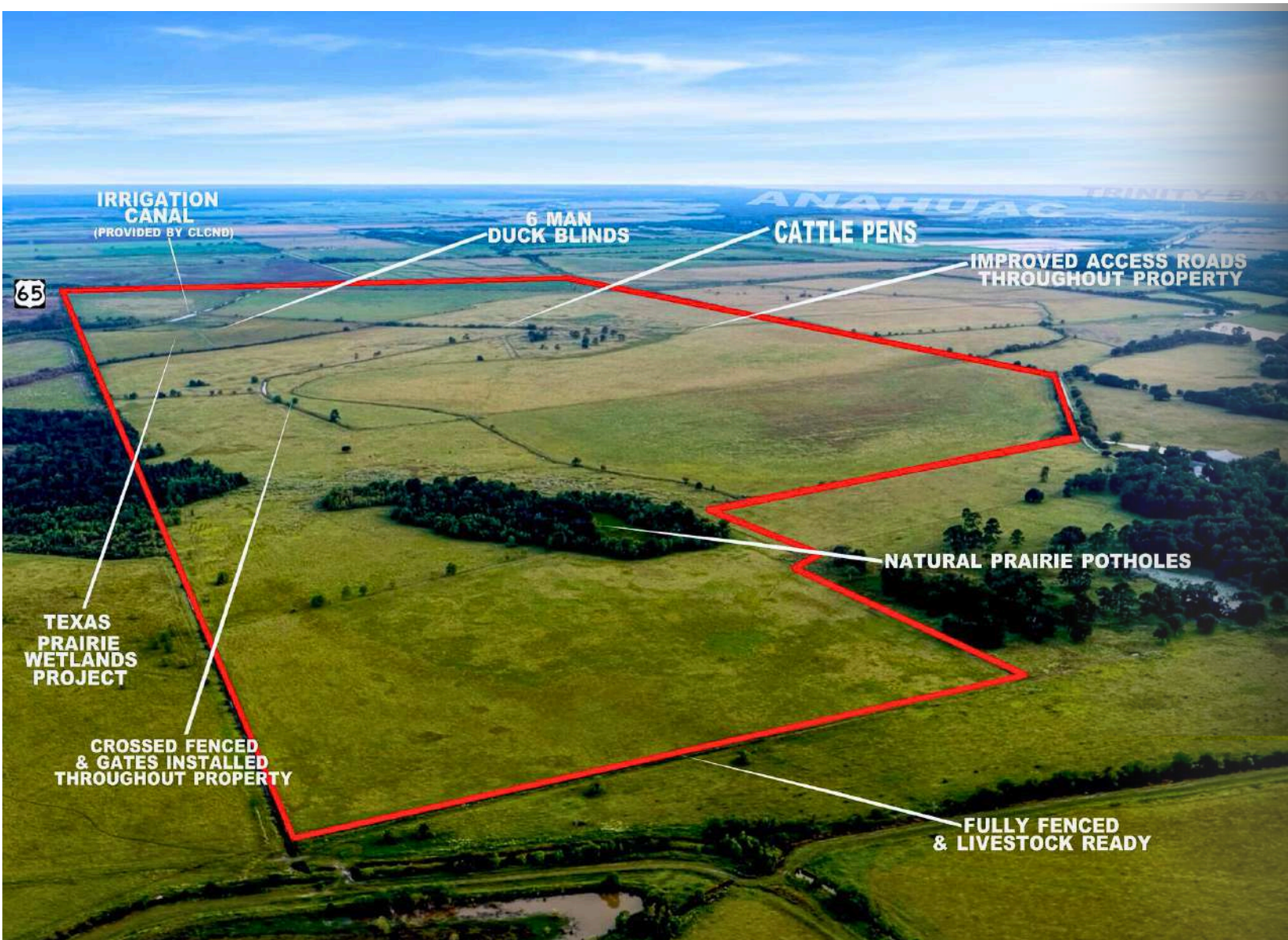
SCAN FOR
PROPERTY TOUR



COLDWELL BANKER
D'ANN HARPER, REALTORS®
LAND & RANCH

COPYRIGHT © BY ANDRUS LAND GROUP

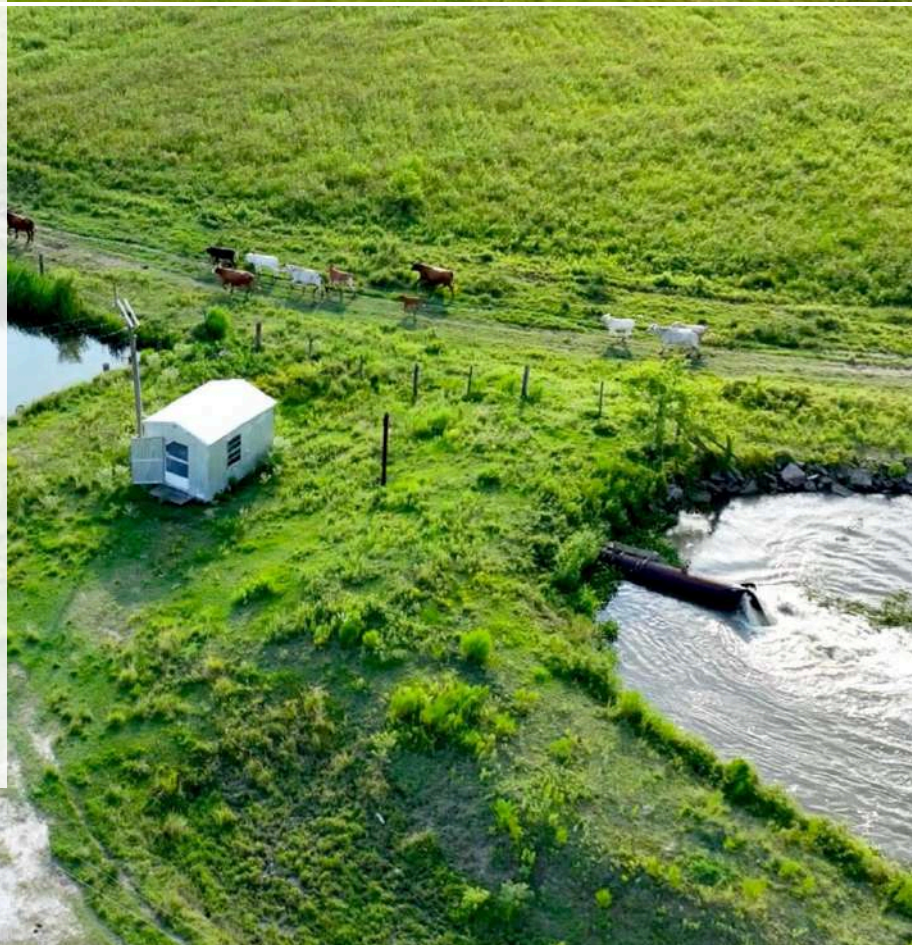
WWW.ANDRUSLANDGROUP.COM | 832-536-9164



THE INFORMATION PROVIDED HEREIN IS BELIEVED TO BE ACCURATE BUT IS NOT GUARANTEED BY ANDRUS LAND GROUP. DETAILS ARE SUBJECT TO CHANGE AT ANY TIME WITHOUT NOTICE.

PROPERTY DESCRIPTION.

Anchor Ranch is a rare 900± acre cattle ranch and rice farm in Chambers County, only 50 miles from Downtown Houston. With 4,200' of Highway 65 frontage plus an additional entrance from Barrow-White Road, this property offers scale, access, & versatility that is difficult to match. The ranch is fully fenced and cross-fenced, equipped with centrally located cattle pens, and supported by an all-weather internal road system for year-round access. Established rice production benefits from irrigation water provided by CLCND, making this property an income-producing agricultural operation. Recreational opportunities are equally impressive with a 47± acre Texas Prairie Wetlands Project, several natural prairie potholes, and a professionally built six-man blind offering premier waterfowl hunting. With electricity on-site, this property blends production, recreation, and investment potential in a prime growth corridor of Chambers County.

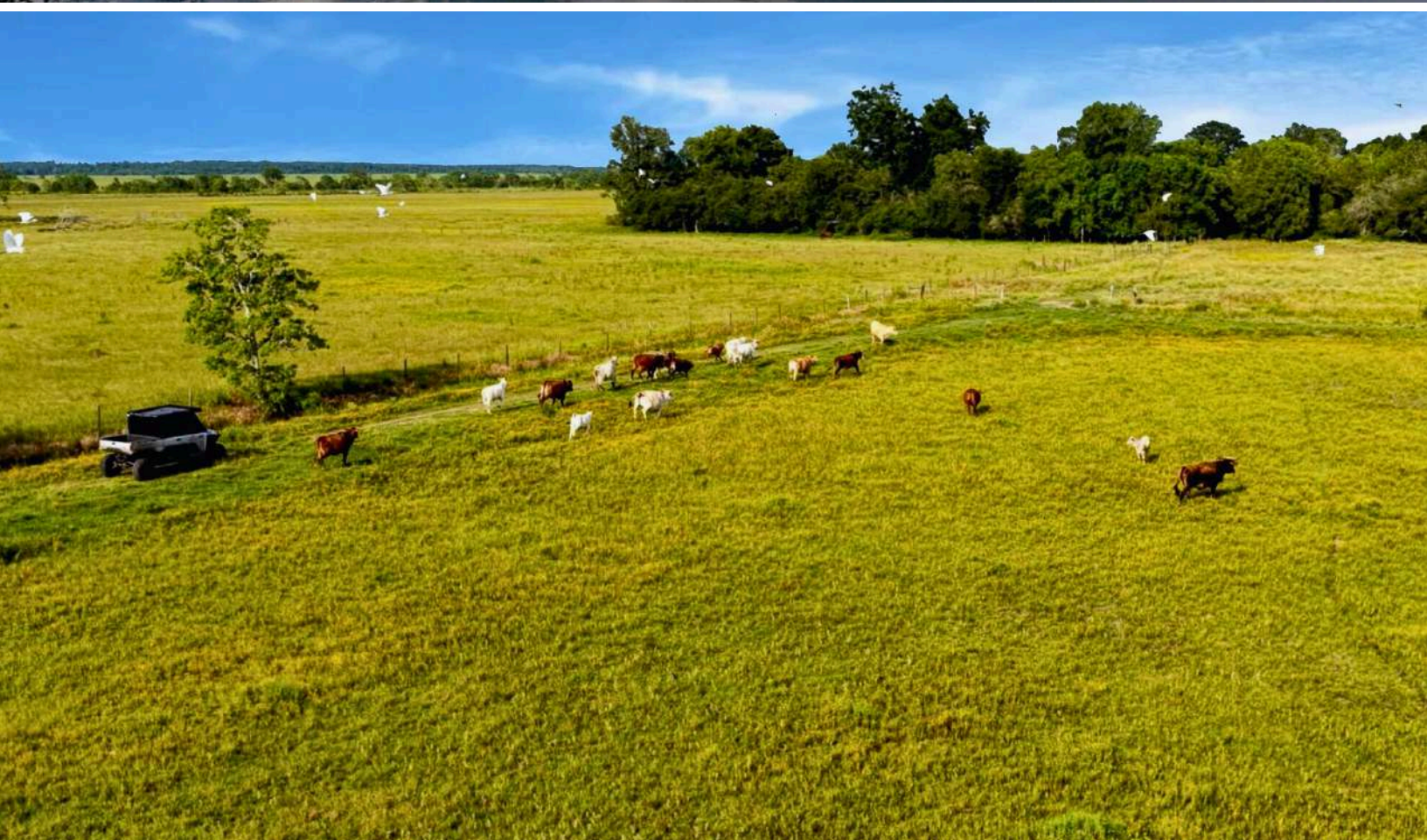


THE INFORMATION PROVIDED HEREIN IS BELIEVED TO BE ACCURATE BUT IS NOT GUARANTEED BY ANDRUS LAND GROUP. DETAILS ARE SUBJECT TO CHANGE AT ANY TIME WITHOUT NOTICE.



PROPERTY FEATURES

Electricity, Hunting, Hwy-County Rd Frontage, Development Potential, Irrigated, Fishing, Corrals, Owner Financing



THE INFORMATION PROVIDED HEREIN IS BELIEVED TO BE ACCURATE BUT IS NOT GUARANTEED BY ANDRUS LAND GROUP. DETAILS ARE SUBJECT TO CHANGE AT ANY TIME WITHOUT NOTICE.

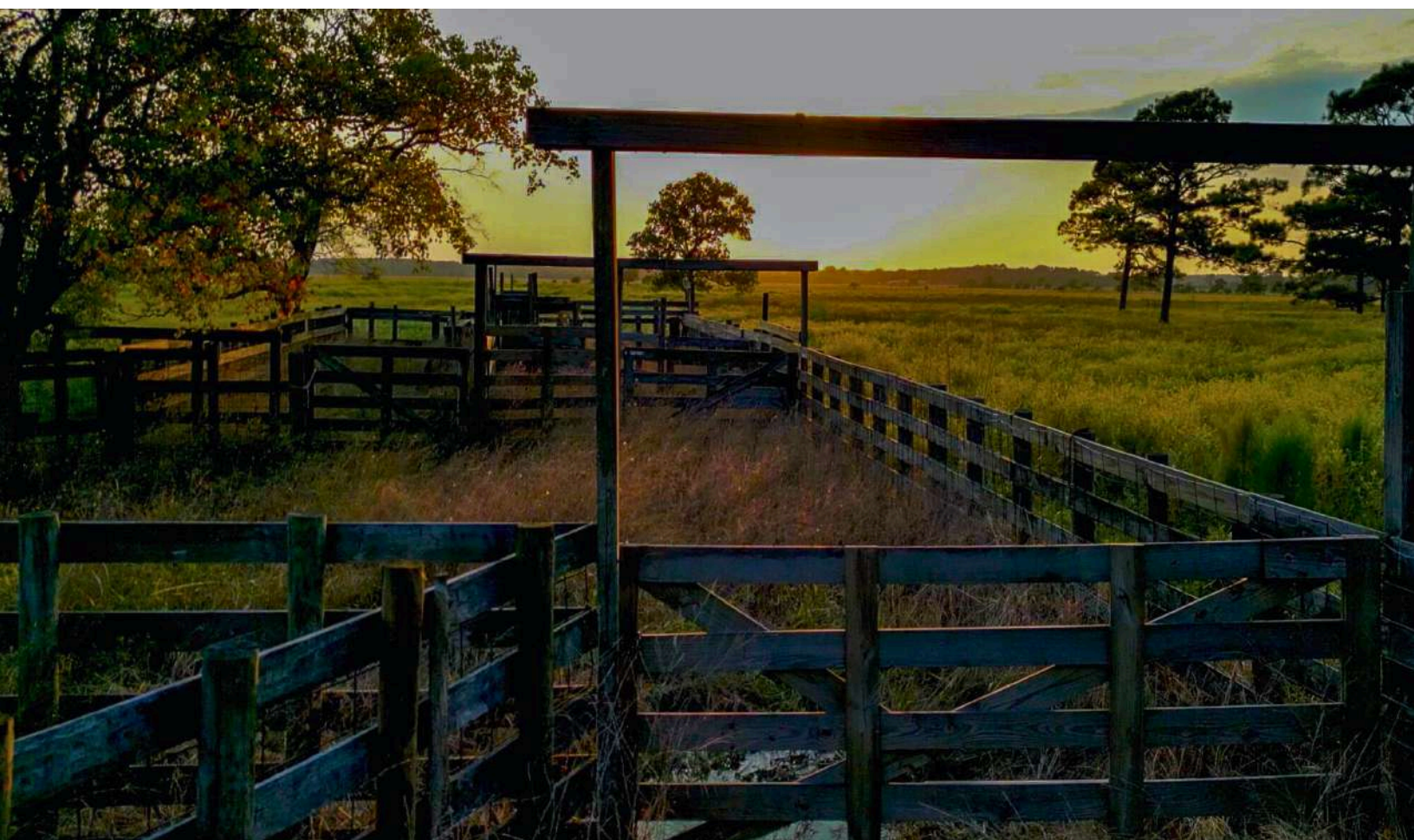


PROPERTY TYPE

Acreage, Hunting Land, Recreational Land, Farm, Ranch, Cattle Ranch



THE INFORMATION PROVIDED HEREIN IS BELIEVED TO BE ACCURATE BUT IS NOT GUARANTEED BY ANDRUS LAND GROUP. DETAILS ARE SUBJECT TO CHANGE AT ANY TIME WITHOUT NOTICE.

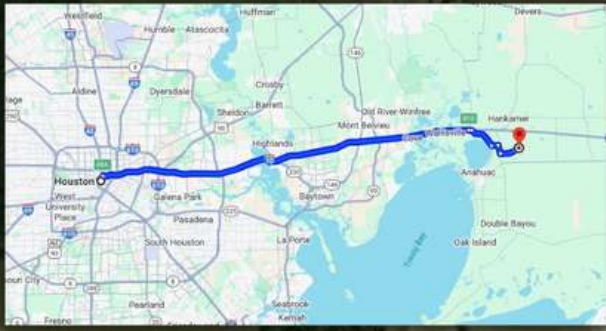


THE INFORMATION PROVIDED HEREIN IS BELIEVED TO BE ACCURATE BUT IS NOT GUARANTEED BY ANDRUS LAND GROUP. DETAILS ARE SUBJECT TO CHANGE AT ANY TIME WITHOUT NOTICE.

000 HWY 65, ANAHUAC, TX 77514

CHAMBERS COUNTY





CLICK IMAGE FOR THE
INTERACTIVE MAP

NAVIGATION DIRECTIONS

From Houston:

Take Interstate 10 west to exit 812 and continue on feeder rd. Take left on Hwy 61 and travel south for 3.8 miles and take left on Hwy 65 and travel 1.7 miles. Property will be on the left

CHAD ANDRUS, ALC ACCREDITED LAND CONSULTANT

chad@andruslandgroup.com

832-402-9211

www.andruslandgroup.com



ALL MATERIALS AND INFORMATION RECEIVED OR DERIVED FROM ANDRUS LAND GROUP AND ITS DIRECTORS, OFFICERS, AGENTS, ADVISORS, AFFILIATES AND/OR ANY THIRD PARTY SOURCES ARE PROVIDED WITHOUT REPRESENTATION OR WARRANTY AS TO COMPLETENESS, VERACITY, OR ACCURACY, CONDITION OF THE PROPERTY, COMPLIANCE OR LACK OF COMPLIANCE WITH APPLICABLE GOVERNMENTAL REQUIREMENTS, DEVELOPABILITY OR SUITABILITY, FINANCIAL PERFORMANCE OF THE PROPERTY, PROJECTED FINANCIAL PERFORMANCE OF THE PROPERTY FOR ANY PARTY'S INTENDED USE OR ANY AND ALL OTHER MATTERS. NEITHER ANDRUS LAND GROUP, ITS DIRECTORS, OFFICERS, AGENTS, ADVISORS, OR AFFILIATES MAKES ANY REPRESENTATION OR WARRANTY, EXPRESS OR IMPLIED, AS TO ACCURACY OR COMPLETENESS OF THE MATERIALS OR INFORMATION PROVIDED, DERIVED, OR RECEIVED. MATERIALS AND INFORMATION FROM ANY SOURCE, WHETHER WRITTEN OR VERBAL, THAT MAY BE FURNISHED FOR REVIEW ARE NOT A SUBSTITUTE FOR A PARTY'S ACTIVE CONDUCT OF ITS OWN DUE DILIGENCE TO DETERMINE THESE AND OTHER MATTERS OF SIGNIFICANCE TO SUCH PARTY. ANDRUS LAND GROUP WILL NOT INVESTIGATE OR VERIFY ANY SUCH MATTERS OR CONDUCT DUE DILIGENCE FOR A PARTY UNLESS OTHERWISE AGREED IN WRITING. EACH PARTY SHALL CONDUCT ITS OWN INDEPENDENT INVESTIGATION AND DUE DILIGENCE.

Ranch. financing made simple



WINNIE OFFICE

NMLS493828 | 409.400.4066 | capitalfarmcredit.com



Anthony Vaughan