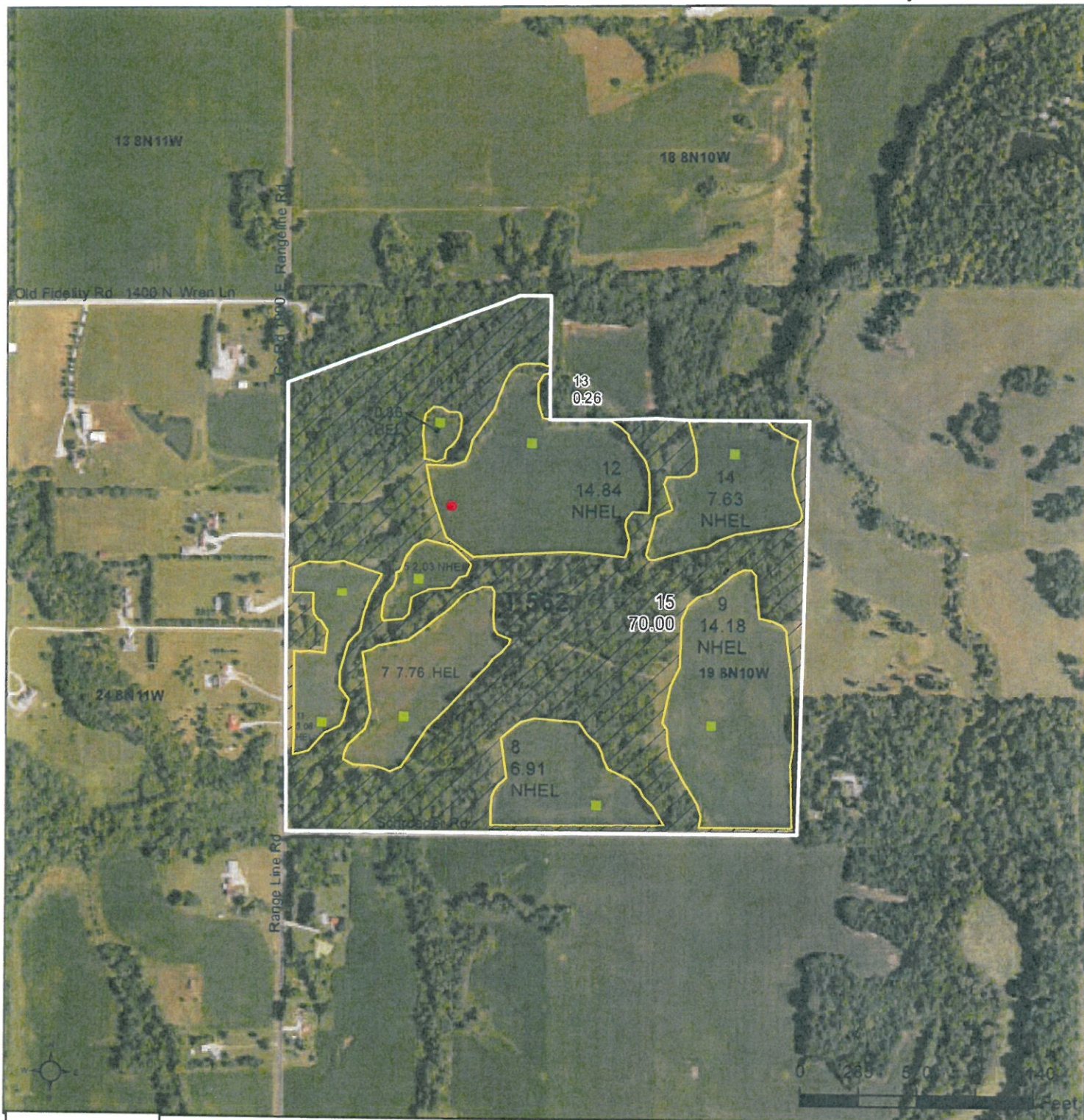




United States  
Department of  
Agriculture

## Jersey County, Illinois

Unless Noted: All crops are Non-Irrigated  
All crops intended use = Grain  
All Corn = YEL  
All Soybeans = COM



### Legend

- Tract Boundary
- Non-Cropland
- Cropland
- CRP

### Wetland Determination Identifiers

- Restricted Use
- Limited Restrictions
- Exempt from Conservation Compliance Provisions

2025 Program Year

Map Created May 20, 2025

Farm 361  
Tract 562

IL083\_T562

Tract Cropland Total: 59.29 acres

United States Department of Agriculture (USDA) Farm Service Agency (FSA) maps are for FSA Program administration only. This map does not represent a legal survey or reflect actual ownership; rather it depicts the information provided directly from the producer and/or National Agricultural Imagery Program (NAIP) imagery. The producer accepts the data 'as is' and assumes all risks associated with its use. USDA-FSA assumes no responsibility for actual or consequential damage incurred as a result of any user's reliance on this data outside FSA Programs. Wetland identifiers do not represent the size, shape, or specific determination of the area. Refer to your original determination (CPA-026 and attached maps) for exact boundaries and determinations or contact USDA Natural Resources Conservation Service (NRCS).