



OFFERED AT

\$399,000 per lot

Exclusive Residential Lots for Sale

- Six (6) cleared estate lots – 7.01 acres each (approved lot split)
- Ideal for residential estates, ranchettes, or hobby farms
- Upland acreage with ~237 ft. of road frontage per lot
- Electrical service available; well & septic utilities

[!\[\]\(003082e50e3009141f59bd5df831749f_img.jpg\) Interactive Map Link](#)

PRESENTED BY

John A. Evans, Sr.

President | **407.947.3335**

David Fuller

Senior Advisor | **407.230.7208**

OFFERED AT _____ **\$399,000 per lot**

STRATEGIC LOCATION

- Approximately 800 ft. west of State Road 11
- Easy access to Interstate 95 / Highway 100 / US Hwy 1

SURROUNDING AMENITIES:

- Grocery & Retail: Publix, Aldi, Target, restaurants, shops, services
- Healthcare: Advent Health Palm Coast
- Transportation: Flagler Executive Airport
- Government: Flagler County Offices

DRIVE-TIME ACCESS:

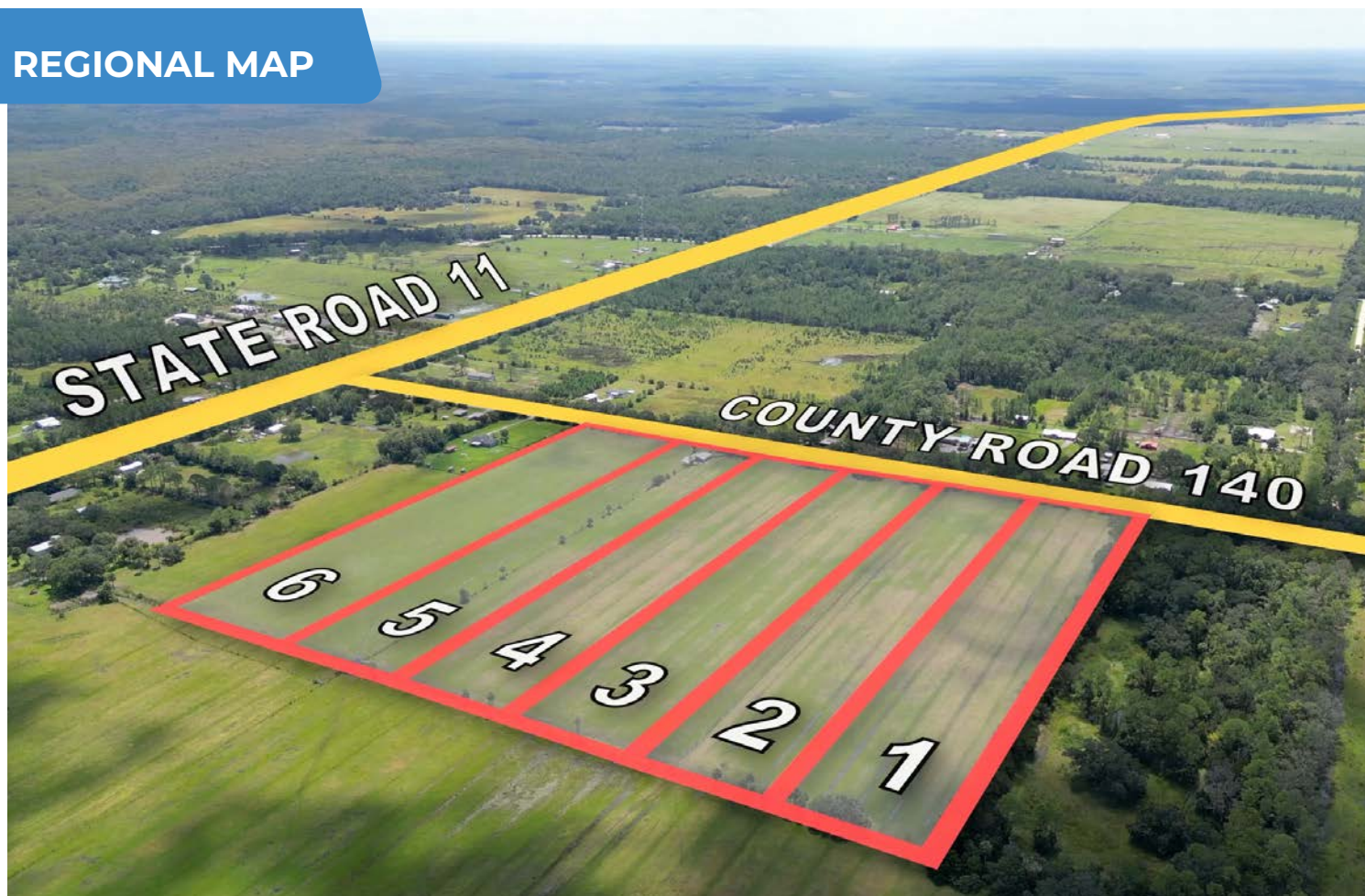
- Bunnell: 10 minutes
- Flagler Beach: 23 minutes
- Daytona Beach: 32 minutes | Daytona Beach Int'l Airport: 34 minutes
- Jacksonville: 70 minutes | Jacksonville Int'l Airport: 85 minutes
- Orlando: 63 minutes | Orlando Int'l Airport: 79 minutes

ZONING

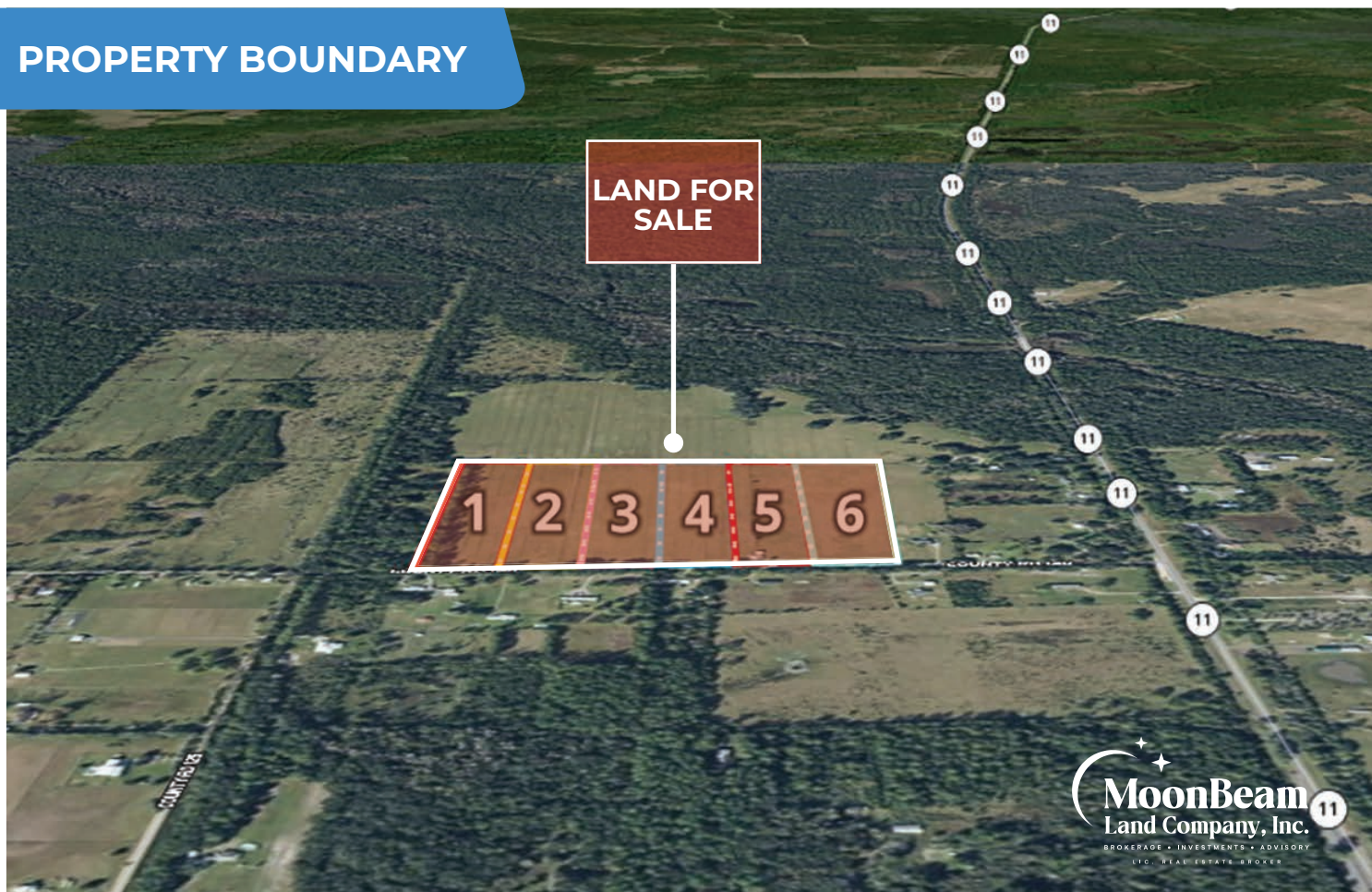
- Residential estate lots approved for ranchettes or hobby farms

Every attempt is made to provide accurate information on properties offered for sale. MoonBeam Land Company, Inc. does not guarantee the accuracy. Offerings are subject to errors, omissions, prior sale or withdrawal without notice. Buyer should rely entirely on their own research, inspection of property, and records.

REGIONAL MAP



PROPERTY BOUNDARY



RESIDENTIAL ESTATE LOTS FOR SALE CODY'S CORNER, FLAGLER COUNTY, FL



MoonBeam Land Company

Your Trusted Partner in Florida Agri-Real Estate and Commercial Land Sales

Rooted in seven generations of Florida heritage, **MoonBeam Land Company** is a premier brokerage specializing in agricultural real estate, commercial land transactions, and strategic investment advisory services.

Under the leadership of **John A. Evans, Sr.**, Licensed Real Estate Broker, our team brings over 17 years of proven market expertise. To date, we have successfully closed more than **\$627 million** in transactions, representing over **90,000 acres** of land across Florida.

Inquire for More Details For personalized assistance, please contact:



John A. Evans, Sr.,

President

 **407.947.3335**

 john@moonbeamlandco.com



David Fuller

Senior Advisor

 **407.230.7208**

 david@moonbeamlandco.com