

# 4-Bed, 3-Bath, Coahoma County Home

621 School Street Clarksdale, MS 38614



**\$170,000**

Check out this brick home located at 621 School Street in Clarksdale, Coahoma County. The home features 4 bedrooms and 3 bathrooms, offering 2,165 square feet of heated and cooled living space. This charming property features a 2-car garage, a fenced backyard, and a covered back porch, providing privacy and relaxation. The interior has been newly painted and features new energy-efficient double-pane windows, along with refinished hardwood floors. The upstairs area features a private bathroom and offers flexibility to accommodate your family's needs, making it suitable for use as a children's room or a game room.



**ANTHONY  
STEEN**

REALTOR®

Office: 601.898.2772

Cell: 662.645.5151

[Anthony@TomSmithLand.com](mailto:Anthony@TomSmithLand.com)



Expect More. Get More.

**A Real Estate Expert You Can Trust**

[TomSmithLandandHomes.com](http://TomSmithLandandHomes.com)

Information is believed to be accurate but not guaranteed.







**A Real Estate Expert**  
*You Can Trust!*

**ANTHONY STEEN**

REALTOR®

O: 601.898.2772 C: 662.645.5151

Anthony@TomSmithLand.com

TomSmithLandandHomes.com

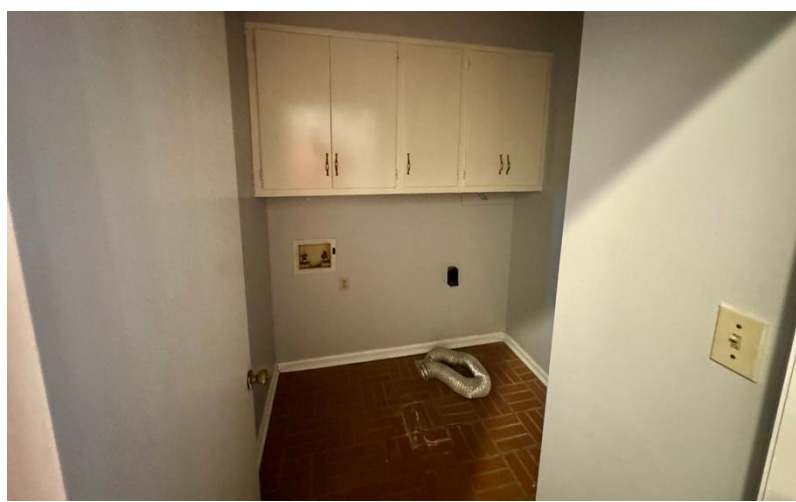
**Tom  
Smith  
LAND AND  
HOMES**

Expect More. Get More.

LandReport  
2011-2025  
AMERICA'S  
**BEST**  
BROKERAGES

Information is believed to be accurate but not guaranteed.





**A Real Estate Expert**  
*You Can Trust!*

**ANTHONY STEEN**  
REALTOR®  
O: 601.898.2772 C: 662.645.5151  
Anthony@TomSmithLand.com  
TomSmithLandandHomes.com

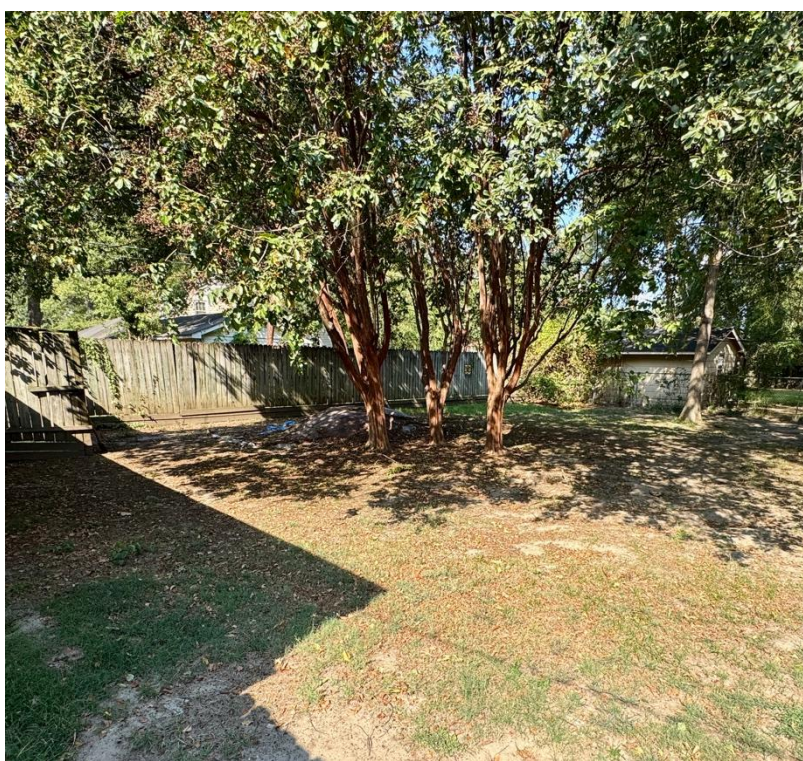
**Tom Smith**  
LAND AND  
HOMES

Expect More. Get More.

Information is believed to be accurate but not guaranteed.

LandReport  
2011-2025  
AMERICA'S  
BEST  
BROKERAGES





**A Real Estate Expert**  
*You Can Trust!*

**ANTHONY STEEN**

REALTOR®

O: 601.898.2772 C: 662.645.5151

Anthony@TomSmithLand.com

TomSmithLandandHomes.com

**Tom  
Smith  
LAND AND  
HOMES**

Expect More. Get More.

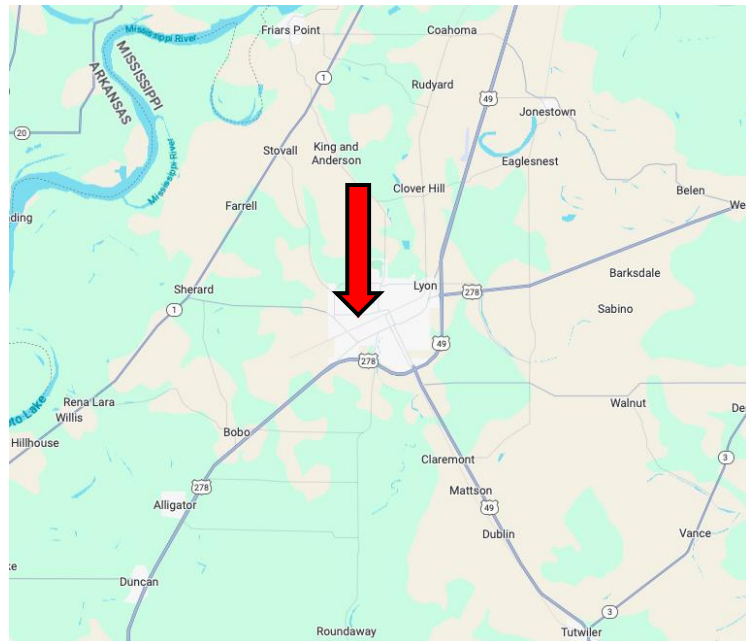
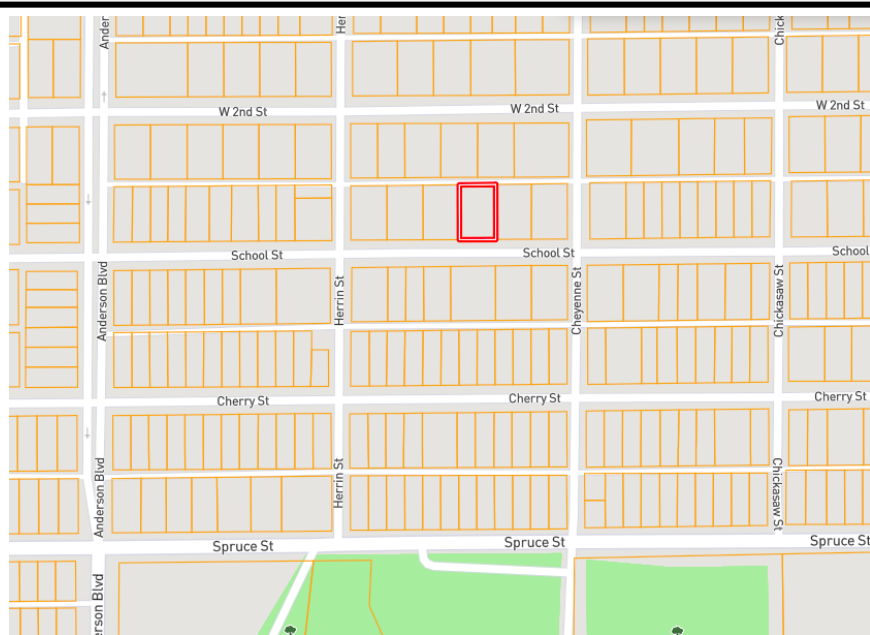
LandReport  
2011-2025  
AMERICA'S  
**BEST**  
BROKERAGES

Information is believed to be accurate but not guaranteed.



# MAPS

[Click for the Interactive Map](#)



**Address:** 621 School Street  
Clarksdale, MS 38614

**Directions from Hwy 61 and Hwy 49,  
Clarksdale, MS:**

For 3.8 miles, travel southwest on US-61 S. Turn right onto S State Street, travel 1.3 miles, and then turn left onto Anderson Blvd. After 1 mile, turn right onto School Street; after 0.2 miles, the house will be on the left. [Google Maps Link](#)



**ANTHONY  
STEEN**  
REALTOR®

Office: 601.898.2772

Cell: 662.645.5151

[Anthony@TomSmithLand.com](mailto:Anthony@TomSmithLand.com)



Expect More. Get More.

**A Real Estate Expert You Can Trust**

[TomSmithLandandHomes.com](http://TomSmithLandandHomes.com)

Information is believed to be accurate but not guaranteed.

