



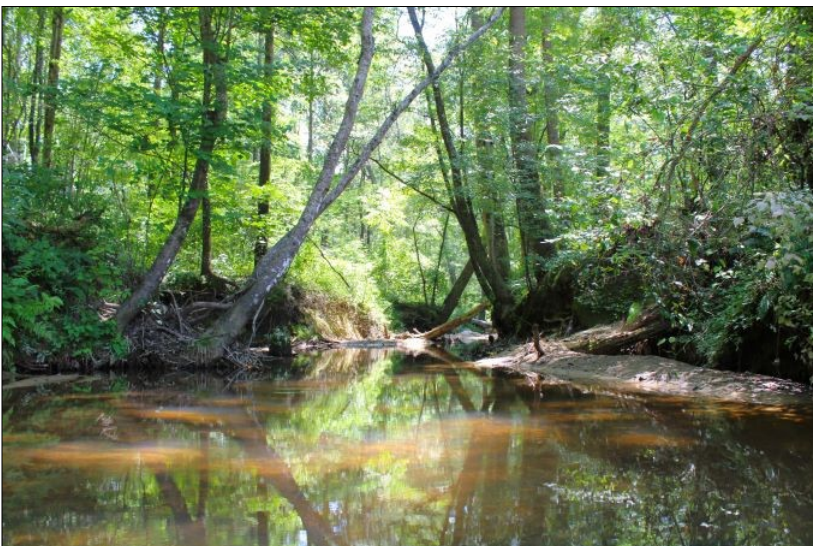
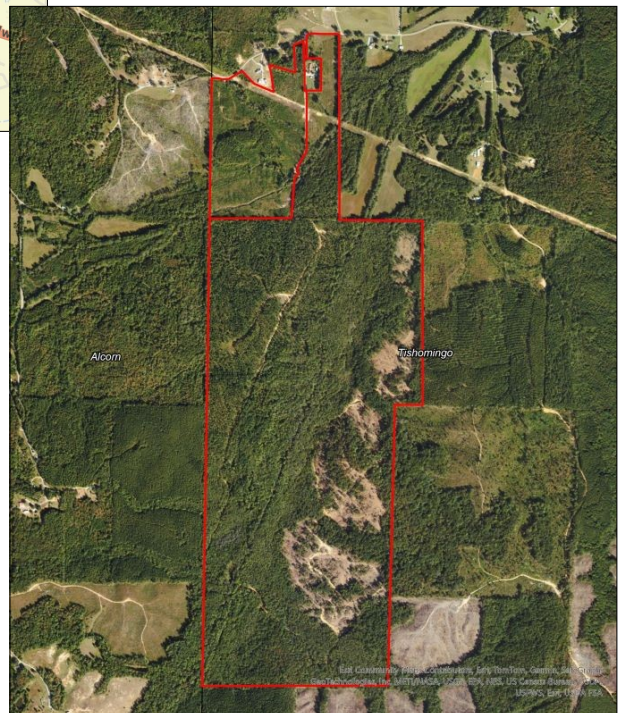
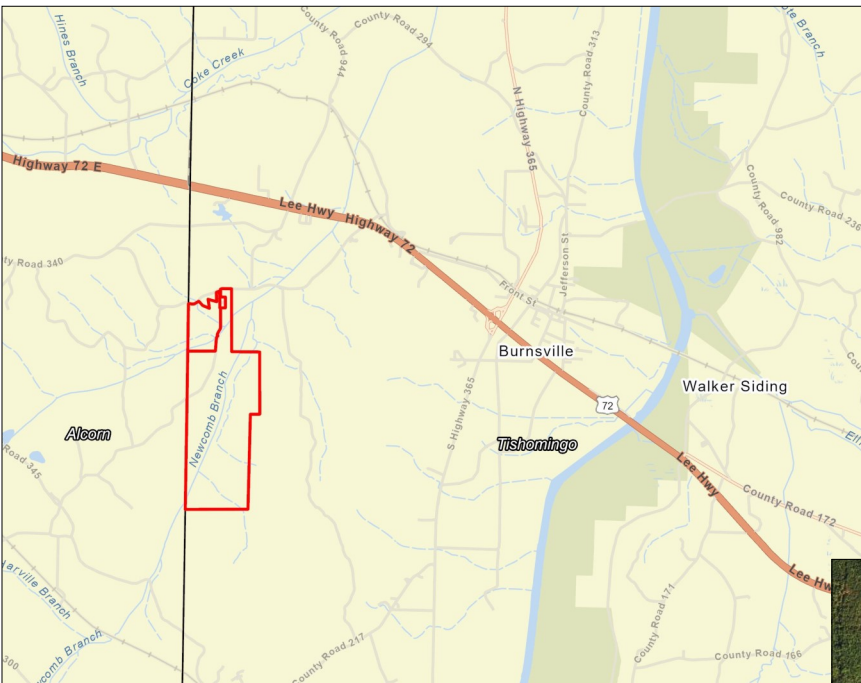
Tishomingo 516.4 +/- Acre Tract
Tishomingo County, MS
+/- 516.4 Acres
Timberland / Hunting / Recreation
\$1,161,900.00

Sections 9 and 16, Township 3 South, Range 9 West
 34.8398, -88.3611

P. O. Box 600
 Gordo, AL 35466
 205-364-7145
 Dale Lancaster, Broker

For more info: www.midsouthforestry.com

If you're looking for the ultimate getaway, this 516.4-acre timberland tract in Tishomingo County, MS delivers. Located in Glen, just off County Roads 433 and 214, this property is only minutes from Burnsville, Glen, Iuka, and Corinth. It features a mix of mature pine, hardwood, and younger pine plantations—perfect for timber investment and wildlife habitat. Newcomb Branch winds through the land, complete with a bridge and a ford for easy crossing. With water and power along the road, you're set to build a cabin or hunting camp. Greenfields are already in place, and the hunting is second to none. Interior roads are in excellent shape, making access throughout the property easy. Whether you're chasing deer or peace and quiet, this land has it all.



All information furnished is assumed to be accurate and correct. However, neither the property owner nor Midsouth Forestry Services warrant the accuracy of information furnished. Prospective buyers should satisfy themselves as to the accuracy of this information. No representation or warranties are expressed or implied as to the property, its condition, boundaries, access, acres, zoning, condition of title or fair market value.