

# MISSISSIPPI DELTA HOME

*207 East Percy Street Indianola, MS 38751*



**\$395,000**

This classic Sunflower County, Mississippi Delta home is one of the first original homes built in Indianola, MS! Just under 1 acre in the middle of town, close to everything. The home features five bedrooms, 4.5 baths, and 4518 sq/ft, and it was built in 1904, beautifully renovated and remodeled with an up-to-date kitchen and bathrooms—Ready for your family to move in and stretch out in style in the Heart of the Delta. Give Emerson a call to schedule your showing of this MS Delta gem today!



**EMERSON  
LOVELACE**

REALTOR®

Office: 662.441.2500

Cell: 601.715.3302

Emerson@TomSmithLand.com



Expect More. Get More.

**A Real Estate Expert You Can Trust**

TomSmithLandandHomes.com

Information is believed to be accurate but not guaranteed.







**A Real Estate Expert**  
*You Can Trust!*

**EMERSON LOVELACE**  
REALTOR®

O: 662.441.2500 C: 601.715.3302

Emerson@TomSmithLand.com

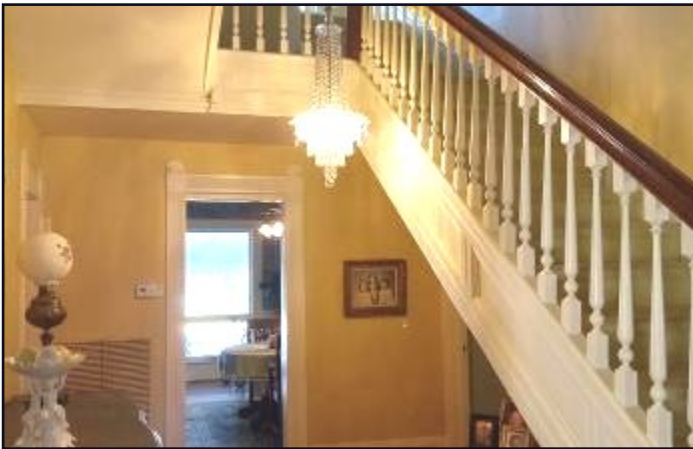
TomSmithLandandHomes.com

**Tom  
Smith**  
LAND AND  
HOMES

Expect More. Get More.

2011-2025  
BEST  
BROKERAGES

Information is believed to be accurate but not guaranteed.



**A Real Estate Expert**  
*You Can Trust!*

**EMERSON LOVELACE**  
REALTOR®

O: 662.441.2500 C: 601.715.3302

Emerson@TomSmithLand.com

TomSmithLandandHomes.com

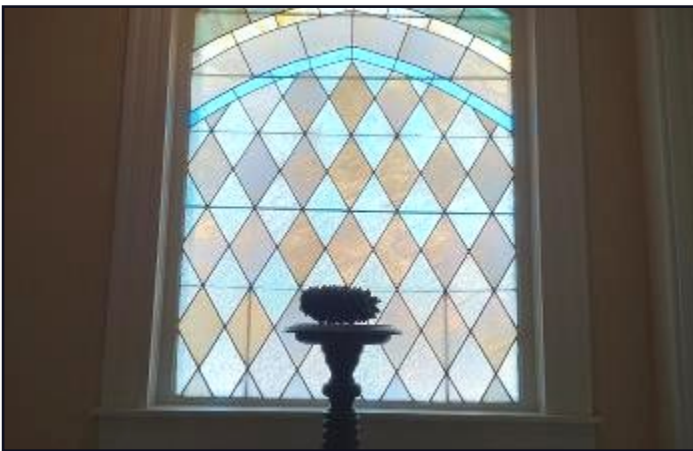
**Tom Smith**  
LAND AND  
HOMES

Expect More. Get More.

2011-2025  
BEST  
BROKERAGES

Information is believed to be accurate but not guaranteed.





**A Real Estate Expert**  
*You Can Trust!*

**EMERSON LOVELACE**  
REALTOR®

O: 662.441.2500 C: 601.715.3302

Emerson@TomSmithLand.com

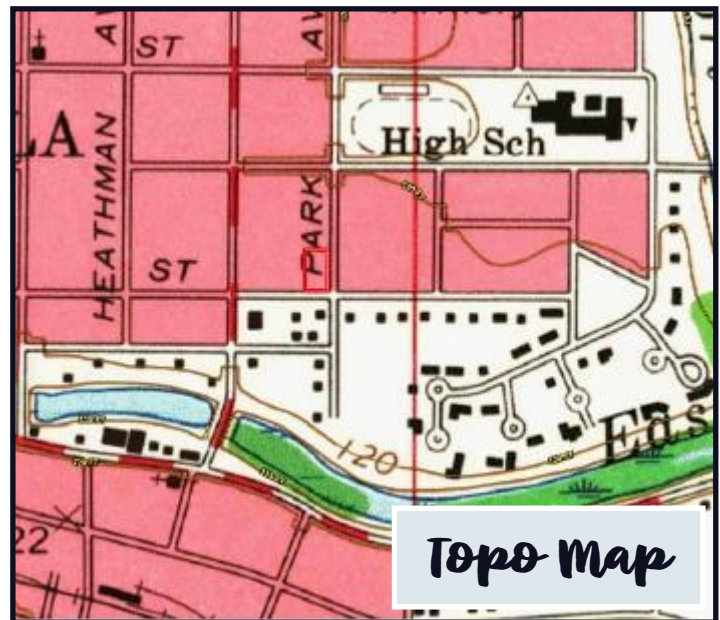
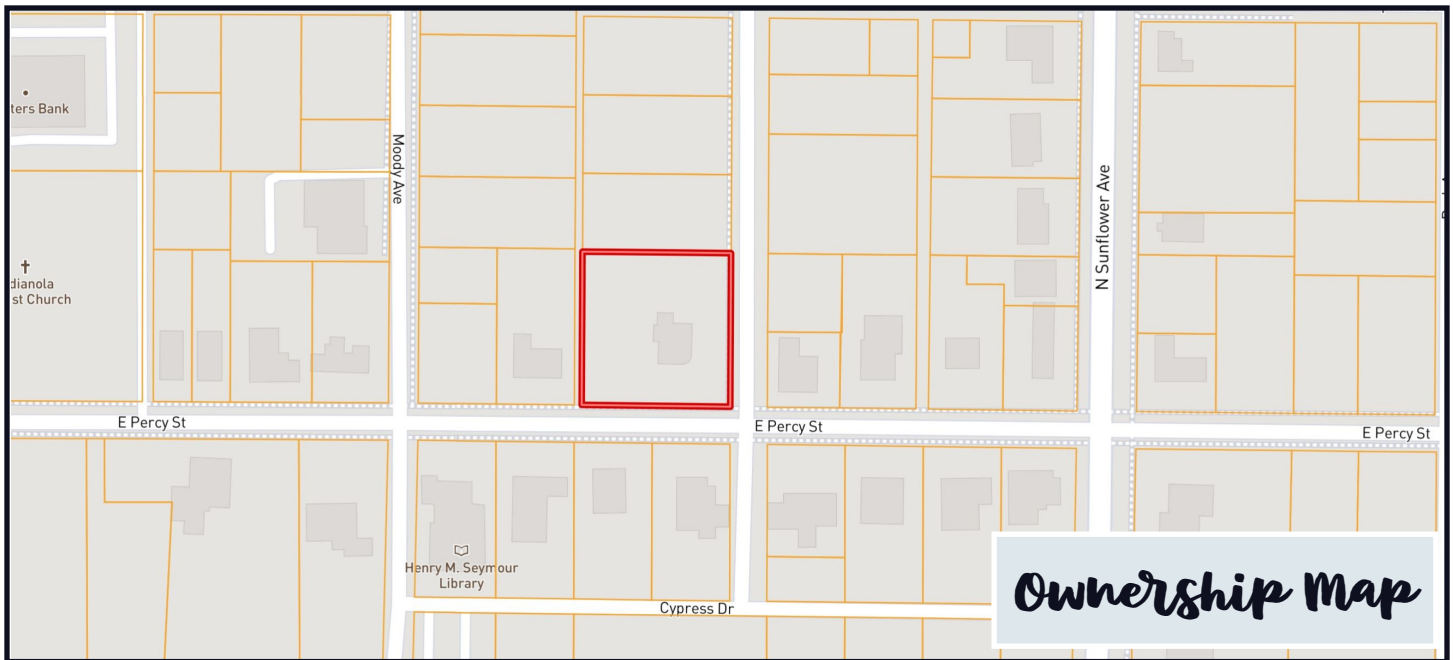
TomSmithLandandHomes.com

**Tom Smith**  
LAND AND  
HOMES

Expect More. Get More.

2011-2025  
BEST  
BROKERAGES

Information is believed to be accurate but not guaranteed.



[CLICK HERE FOR AN INTERACTIVE MAP](#)

**A Real Estate Expert**  
*You Can Trust!*

**EMERSON LOVELACE**  
REALTOR®

O: 662.441.2500 C: 601.715.3302

Emerson@TomSmithLand.com

TomSmithLandandHomes.com



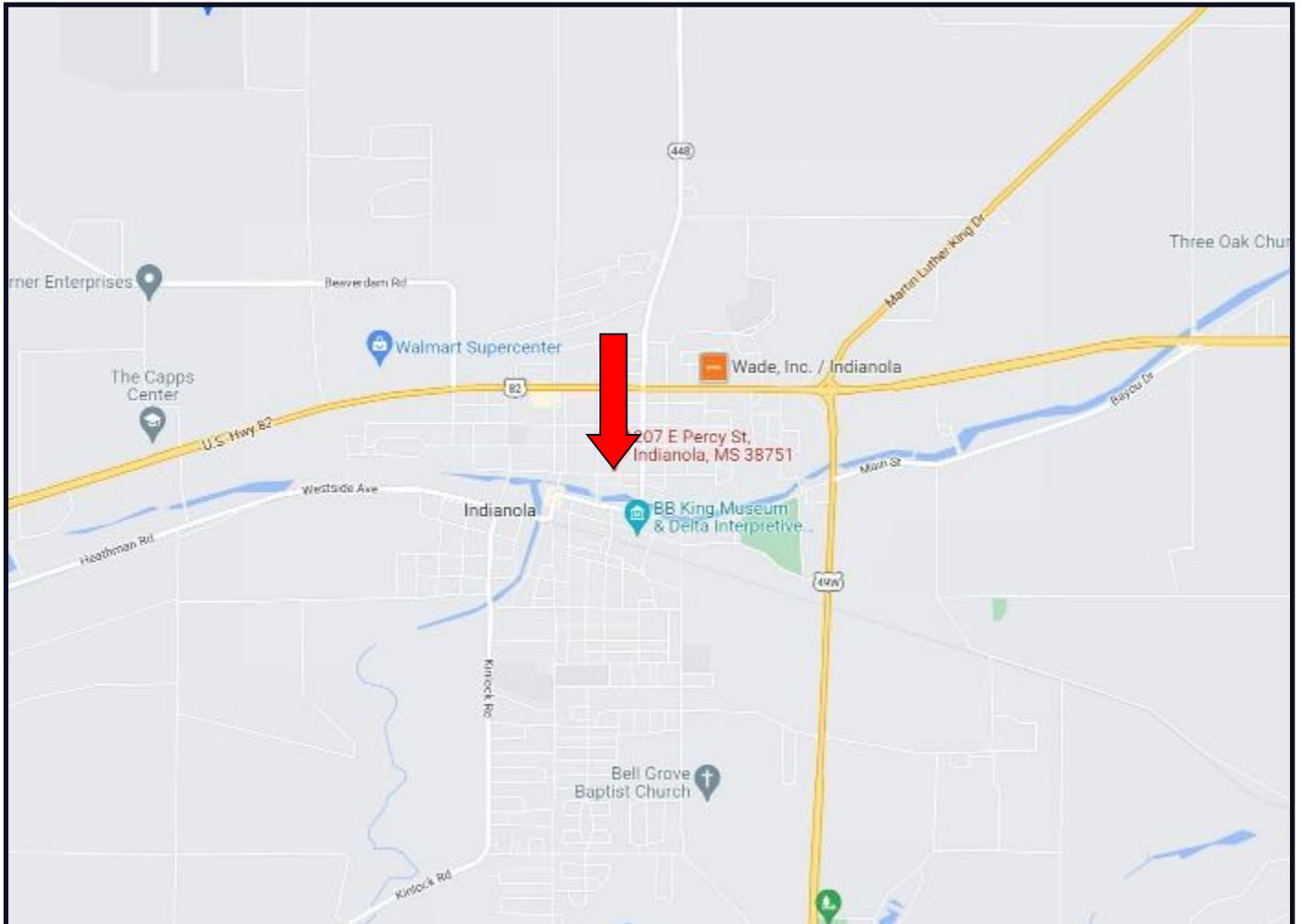
Expect More. Get More.



Information is believed to be accurate but not guaranteed.



# Directional Map



**DIRECTIONS FROM Hwy 49 and Hwy 82 in Indianola, MS:** Travel Hwy 82 for .7 miles. Turn left onto N Sunflower Avenue and travel .3 miles. Turn right on East Percy Street, after passing Heatherman Avenue the home will be the first home on the right. Click for Directions: [207 East Percy St. Indianola, MS 38751](#)

**A Real Estate Expert**  
*You Can Trust!*

**EMERSON LOVELACE**  
REALTOR®

O: 662.441.2500 C: 601.715.3302  
Emerson@TomSmithLand.com  
TomSmithLandandHomes.com

**Tom Smith**  
**LAND AND HOMES**

Expect More. Get More.

2011-2025  
NATIONAL  
BEST  
BROKERAGES

Information is believed to be accurate but not guaranteed.