

2 STORY, 5 BEDROOM HOME IN COLLEGE TOWN

1.50± Acres With a Home in Tippah County, MS



\$225,000

This spacious 2-story home, located at 136 North Guyton Boulevard on Hwy 15 in Blue Mountain, MS, offers flexibility and potential. With 8 total rooms, it can easily be configured into 5 or 6 bedrooms, along with 2.5 bathrooms. Just under half a mile from Blue Mountain Christian University, the property includes 2,295 square feet of heated living space and sits on a generous 1.5-acre lot in the above average South Tippah School District.

The home is in fair condition and would make a great primary residence or rental with only minor repairs. Its prime location on Hwy 15 also makes it an excellent opportunity for commercial development. The property is being sold as is.

Don't miss out—call Tom today!

TOM
WISEMAN

ASSOCIATE BROKER

Office: 662.268.6333

Cell: 662.317.0467

TWiseman@TomSmithLand.com



Expect More. Get More.

A Real Estate Expert You Can Trust

TomSmithLandandHomes.com

Information is believed to be accurate but not guaranteed.





A Real Estate Expert *You Can Trust!*

TOM WISEMAN

ASSOCIATE BROKER

O: 662.268.6333 C: 662.317.0467

Twiseman@TomSmithLand.com

TomSmithLandandHomes.com

**Tom
Smith
LAND AND
HOMES**

Expect More. Get More.



Information is believed to be accurate but not guaranteed.



A Real Estate Expert *You Can Trust!*

TOM WISEMAN

ASSOCIATE BROKER

O: 662.268.6333 C: 662.317.0467

Twiseman@TomSmithLand.com

TomSmithLandandHomes.com

**Tom
Smith
LAND AND
HOMES**

Expect More. Get More.



Information is believed to be accurate but not guaranteed.

AERIAL MAP



[Click Here for the LandId Interactive Map Link](#)

A Real Estate Expert
You Can Trust!

TOM WISEMAN

ASSOCIATE BROKER

O: 662.268.6333 C: 662.317.0467

Twiseman@TomSmithLand.com

TomSmithLandandHomes.com

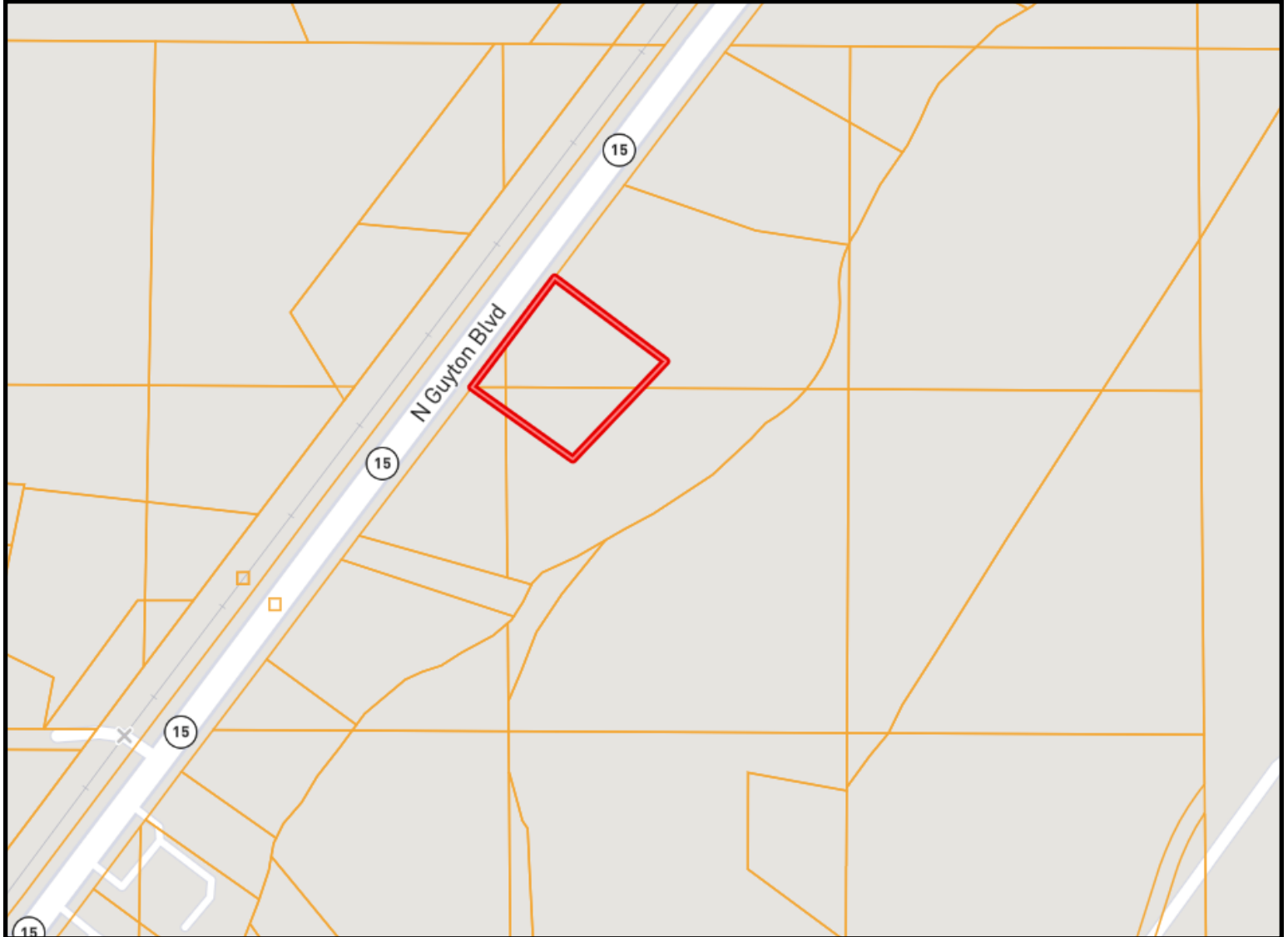


Expect More. Get More.



Information is believed to be accurate but not guaranteed.

OWNERSHIP MAP



A Real Estate Expert
You Can Trust!

TOM WISEMAN

ASSOCIATE BROKER

O: 662.268.6333 C: 662.317.0467

Twiseman@TomSmithLand.com

TomSmithLandandHomes.com

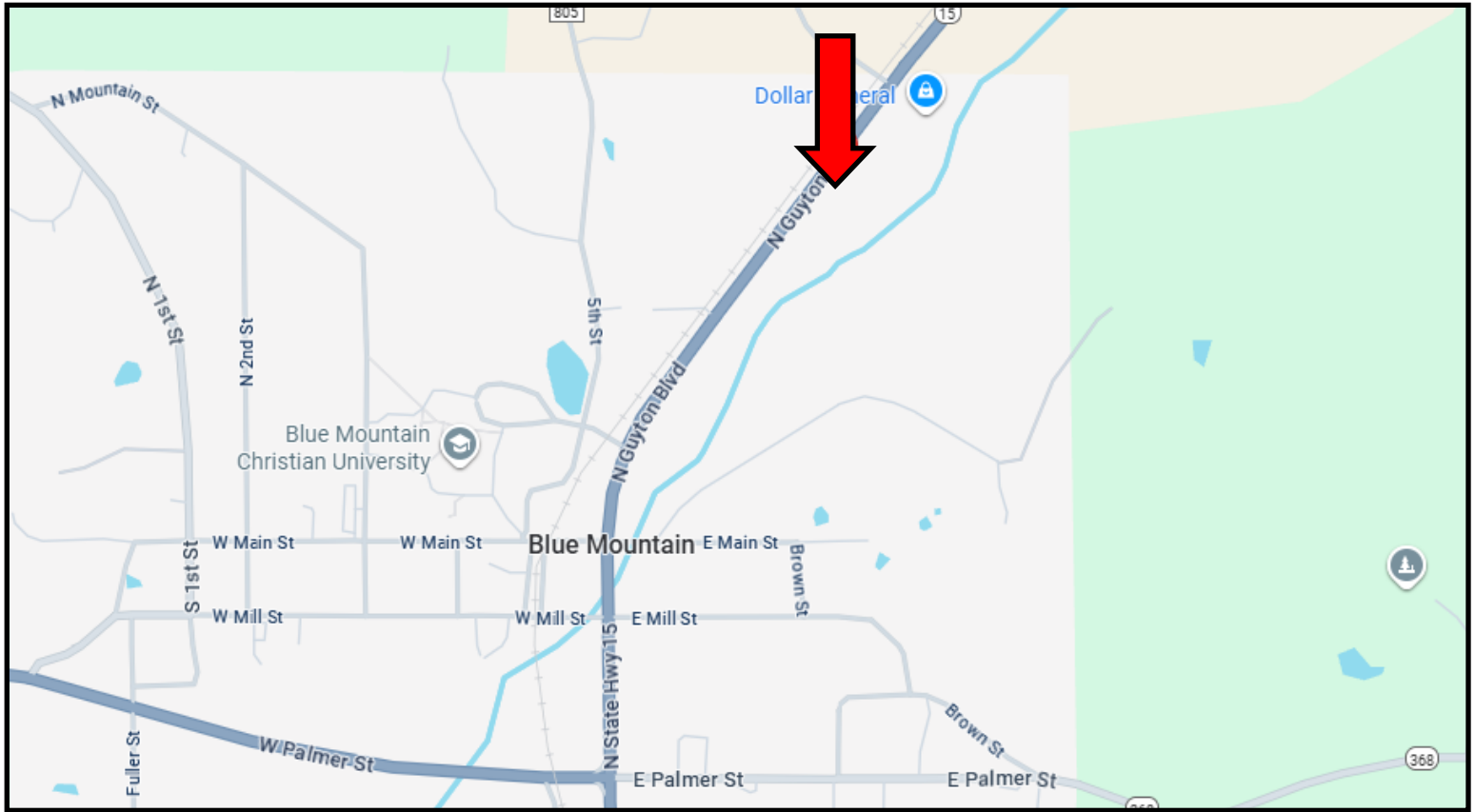


Expect More. Get More.

Information is believed to be accurate but not guaranteed.



DIRECTIONAL MAP



From the intersection of Hwy 15/Hwy 2 in Blue Mountain, MS: Travel north on Hwy 15 for 0.7 miles and the property will be on the right.

[Click for Google Maps Link](#)

Address: 136 North Guyton Boulevard Blue Mountain, MS 38610



**TOM
WISEMAN**

ASSOCIATE BROKER

Office: 662.268.6333

Cell: 662.317.0467

TWiseman@TomSmithLand.com



Expect More. Get More.

A Real Estate Expert You Can Trust

TomSmithLandandHomes.com

Information is believed to be accurate but not guaranteed.

