

# 1313 Lebanon Road

## 36.1± Acres in Webster County, MS



**\$219,000**

1313 Lebanon Road sits on 36.1± acres and is ready for its next owner. The 800 square foot house is a one bedroom, one bathroom with all the privacy you could want. The house is tucked into some timber with a private drive leading right to it. There is a small barn right next to the house that could be used for many purposes. The land is fenced, has watering holes, a creek and hardwood timber pockets. This property fronts Lebanon Road in Eupora, MS and has over a 500 feet of road frontage. Power and water are available at the road too! This tract would make the perfect weekend get-away or hunting camp. There is an additional 36.1± acres available. To schedule a private showing, call or text Walker Trnum today!



**WALKER  
TRANUM**  
REALTOR®

Office: 662.268.6333

Cell: 662.769.1442

Walker@TomSmithHomes.com



Expect More. Get More.

**A Real Estate Expert You Can Trust**

TomSmithLandandHomes.com

Information is believed to be accurate but not guaranteed.







**WALKER  
TRANUM**  
REALTOR®

Office: 662.268.6333

Cell: 662.769.1442

Walker@TomSmithHomes.com



Expect More. Get More.

**A Real Estate Expert You Can Trust**

TomSmithLandandHomes.com

Information is believed to be accurate but not guaranteed.







**WALKER  
TRANUM**  
REALTOR®

Office: 662.268.6333

Cell: 662.769.1442

Walker@TomSmithHomes.com



Expect More. Get More.

**A Real Estate Expert You Can Trust**

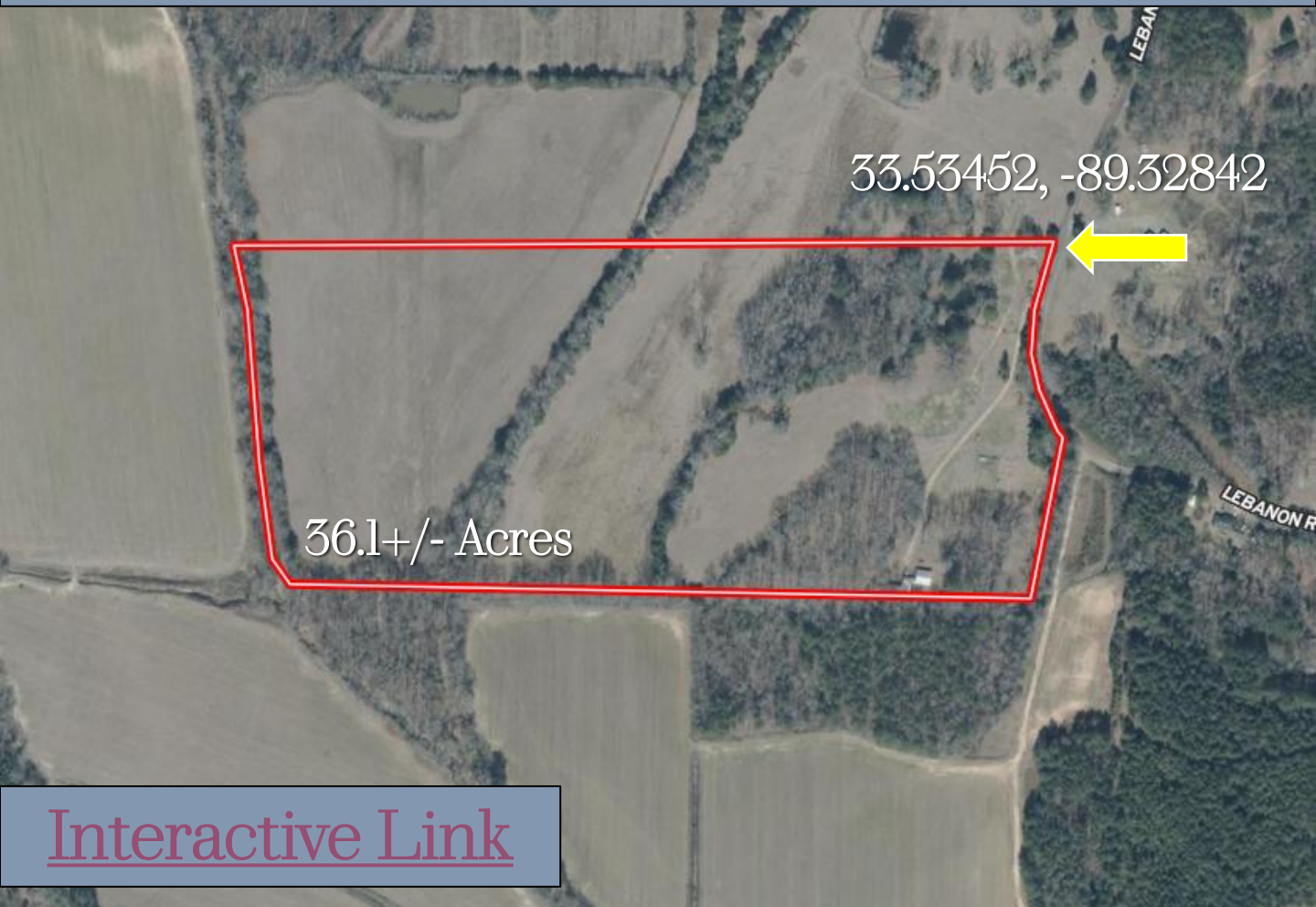
TomSmithLandandHomes.com

Information is believed to be accurate but not guaranteed.





# Aerial Map



[Interactive Link](#)



**WALKER  
TRANUM**  
REALTOR®

Office: 662.268.6333

Cell: 662.769.1442

Walker@TomSmithHomes.com



Expect More. Get More.

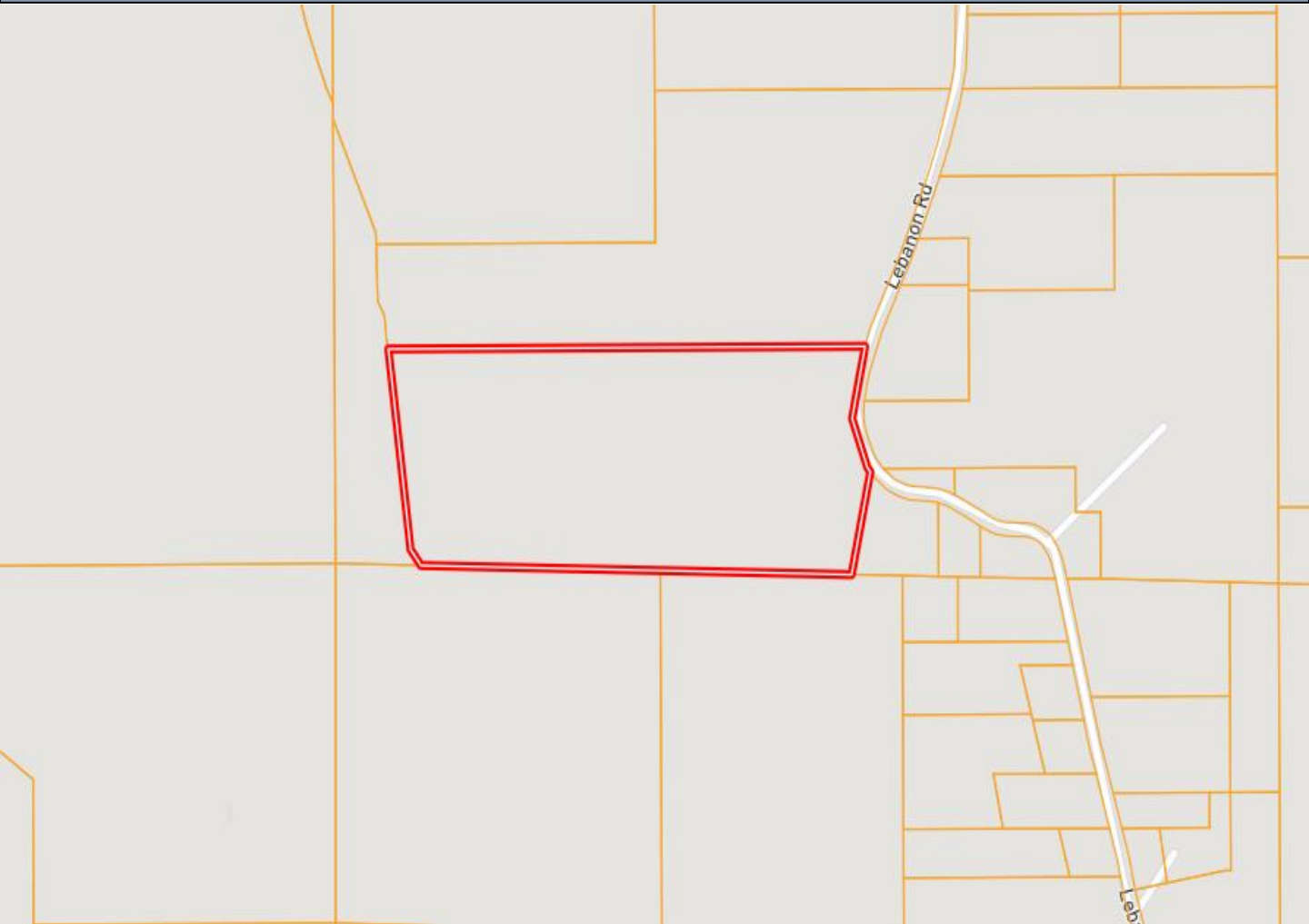
**A Real Estate Expert You Can Trust**

TomSmithLandandHomes.com

Information is believed to be accurate but not guaranteed.



# Ownership Map



**WALKER  
TRANUM**  
REALTOR®

Office: 662.268.6333

Cell: 662.769.1442

Walker@TomSmithHomes.com



Expect More. Get More.

**A Real Estate Expert You Can Trust**

TomSmithLandandHomes.com

Information is believed to be accurate but not guaranteed.



# Topo Map



**WALKER  
TRANUM**  
REALTOR®

Office: 662.268.6333

Cell: 662.769.1442

Walker@TomSmithHomes.com



Expect More. Get More.

**A Real Estate Expert You Can Trust**

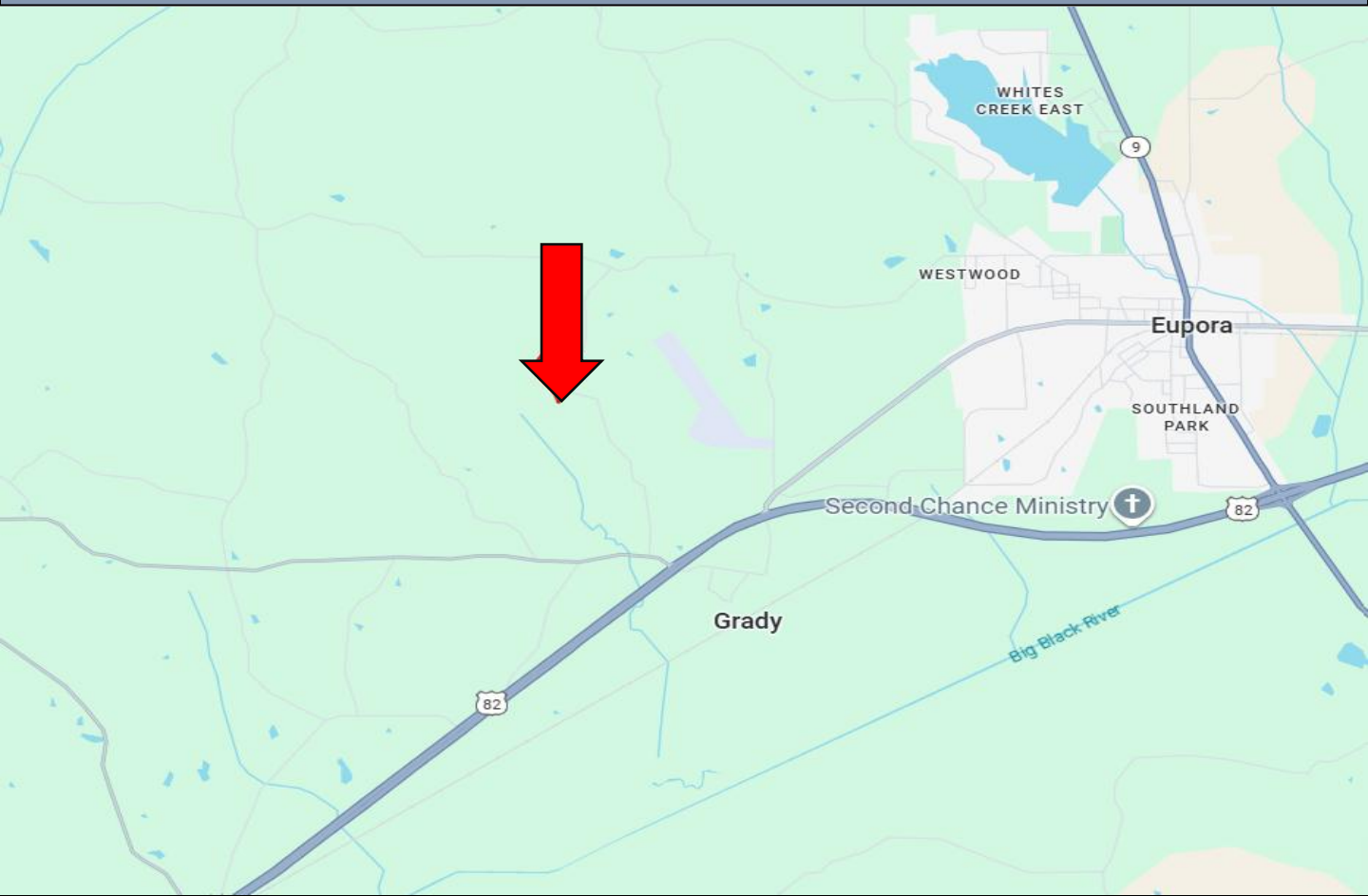
TomSmithLandandHomes.com

Information is believed to be accurate but not guaranteed.





# Directional Map



Directions from Eupora, MS: Head West on MS-182 West towards Veterans Memorial Boulevard North for 2.8 miles. Then turn right onto US-82 West for .6 miles. After that merge onto Grady Road in .1 miles. Then turn right onto Lebanon Road and the property will be on your left on 1.3 miles. [Google Map Link](#)



**WALKER  
TRANUM**  
REALTOR®

Office: 662.268.6333

Cell: 662.769.1442

Walker@TomSmithHomes.com



Expect More. Get More.

**A Real Estate Expert You Can Trust**

TomSmithLandandHomes.com

Information is believed to be accurate but not guaranteed.

