

RECREATIONAL HARDWOOD TRACT 15± Acres in Copiah County, MS



\$60,000

Looking for prime property in Copiah County, MS? This 15± acre parcel, located just off MS-27 in the picturesque Rockport community, is a hidden gem. The land features a stunning mix of mature hardwoods and scattered pines, creating a serene and scenic setting. Whether envisioning a recreational retreat or the perfect spot to build your custom home, this property offers endless possibilities. Don't miss the opportunity to own this versatile and beautiful piece of land! Call Chad to schedule your tour today!



**CHAD
WILSON**

REALTOR®

Office: 601.898.2772

Cell: 601.750.1970

Chad@TomSmithLand.com



Expect More. Get More.

A Real Estate Expert You Can Trust

TomSmithLandandHomes.com

Information is believed to be accurate but not guaranteed.





A Real Estate Expert *You Can Trust!*

CHAD WILSON
REALTOR®

O: 601.898.2772 C: 601.750.1970

Chad@TomSmithLand.com

TomSmithLandandHomes.com



Expect More. Get More.



Information is believed to be accurate but not guaranteed.

Aerial Map



[Click Here for the LandId Interactive Map Link](#)

A Real Estate Expert
You Can Trust!

CHAD WILSON
REALTOR®

O: 601.898.2772 C: 601.750.1970

Chad@TomSmithLand.com

TomSmithLandandHomes.com

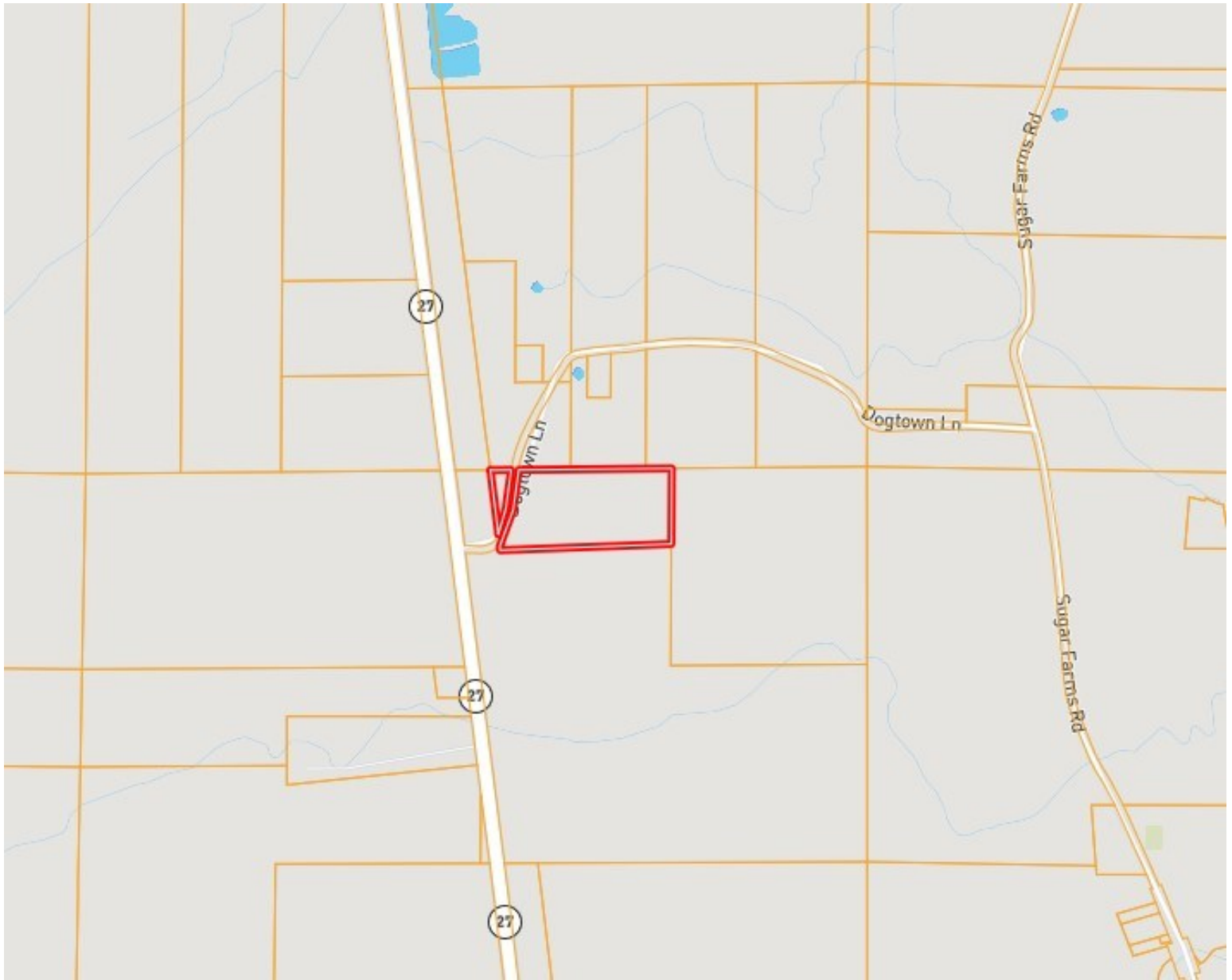


Expect More. Get More.



Information is believed to be accurate but not guaranteed.

Ownership Map



A Real Estate Expert
You Can Trust!

CHAD WILSON
REALTOR®

O: 601.898.2772 C: 601.750.1970

Chad@TomSmithLand.com

TomSmithLandandHomes.com



Expect More. Get More.



Information is believed to be accurate but not guaranteed.

Topographic Map



A Real Estate Expert
You Can Trust!

CHAD WILSON
REALTOR®

O: 601.898.2772 C: 601.750.1970

Chad@TomSmithLand.com

TomSmithLandandHomes.com

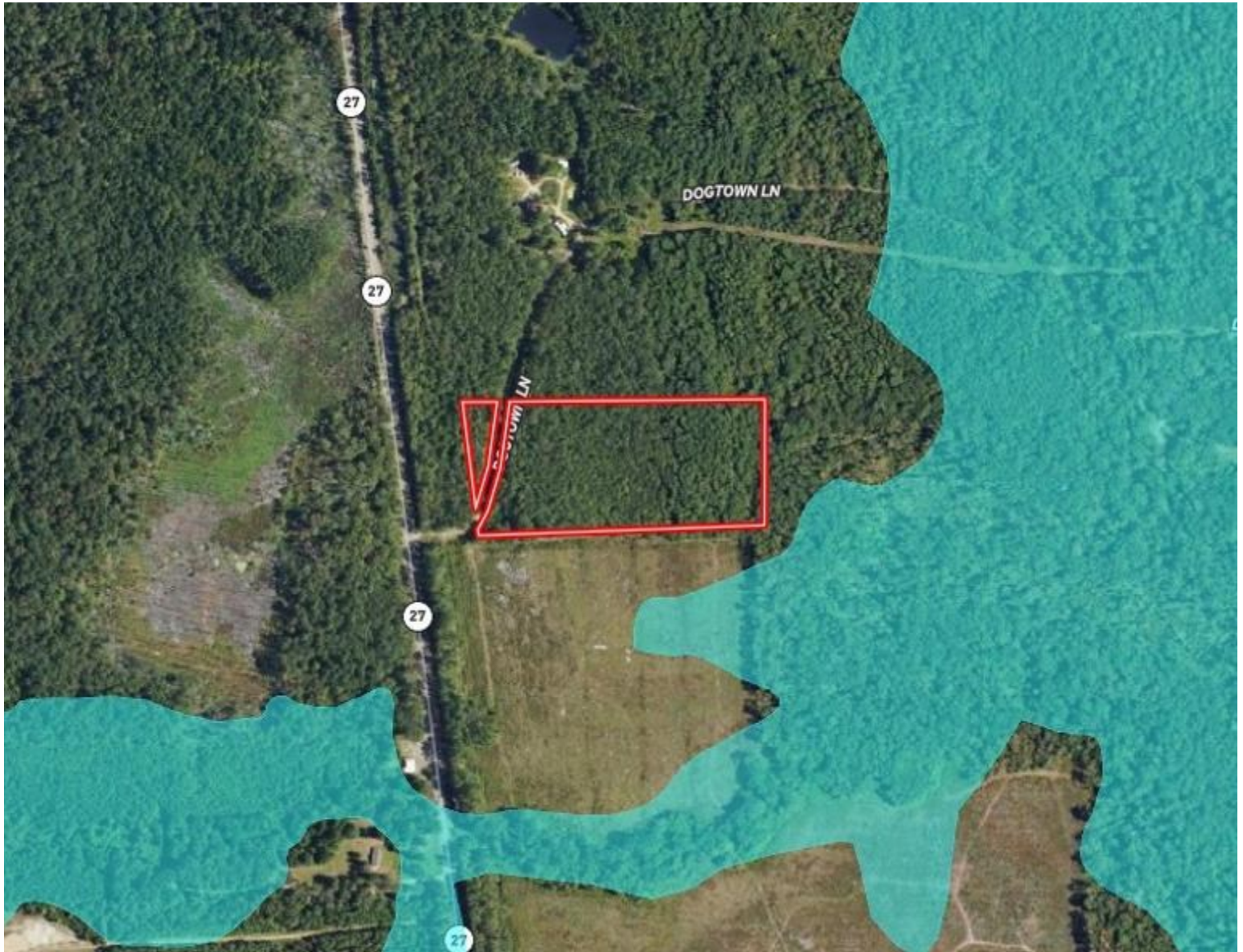


Expect More. Get More.



Information is believed to be accurate but not guaranteed.

Flood Map



A Real Estate Expert
You Can Trust!

CHAD WILSON
REALTOR®

O: 601.898.2772 C: 601.750.1970

Chad@TomSmithLand.com

TomSmithLandandHomes.com

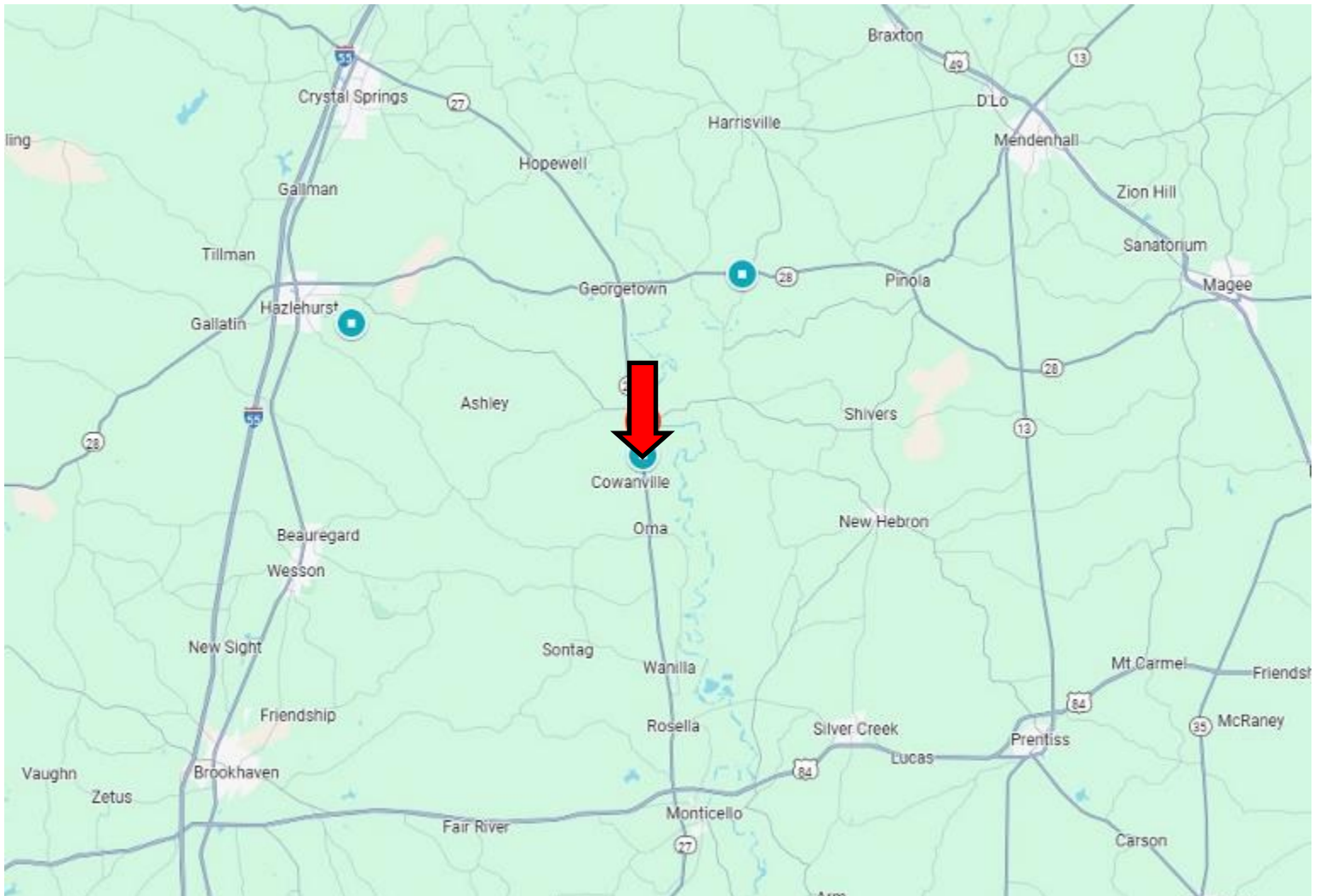


Expect More. Get More.



Information is believed to be accurate but not guaranteed.

Directional Map



Directions from the intersection of I-55 and MS-28 in Hazlehurst, MS: Take exit 61 and travel east onto MS-28 for 14.6 miles. Turn right onto MS-27 and travel for 7.1 miles. Turn left onto Dogtown Lane and travel 300 ft. The property will be on both sides of the road. [Google Map Link](#)



**CHAD
WILSON**

REALTOR®

Office: 601.898.2772

Cell: 601.750.1970

Chad@TomSmithLand.com



Expect More. Get More.

A Real Estate Expert You Can Trust

TomSmithLandandHomes.com

Information is believed to be accurate but not guaranteed.

