

2 STORY HOME WITH ACREAGE

11.77± Acres in Union County, MS



\$399,000

Enjoy country living in a 2,200-sf home conveniently located at 1356 CR 180 in the desirable Blue Springs community. This 2-story house, the builder's personal residence, has seven rooms including four bedrooms, living room, kitchen, game room, two full bathrooms and two 1/2 bathrooms with an attached 2 car garage. The interior has wood flooring throughout. The exterior has pine siding with a metal roof. The French drainage system keeps the lower floor dry. There is a large shed for your equipment. The 11.77 wooded acres with a pond provide plenty of room for the kids to roam on. The A rated East Union School is less than 3 miles away. Don't wait—call Tom today!



**TOM
WISEMAN**

ASSOCIATE BROKER

Office: 662.268.6333

Cell: 662.317.0467

TWiseman@TomSmithLand.com



Expect More. Get More.

A Real Estate Expert You Can Trust

TomSmithLandandHomes.com

Information is believed to be accurate but not guaranteed.





A Real Estate Expert *You Can Trust!*

TOM WISEMAN

ASSOCIATE BROKER

O: 662.268.6333 C: 662.317.0467

TWiseman@TomSmithLand.com

TomSmithLandandHomes.com



Expect More. Get More.



Information is believed to be accurate but not guaranteed.



A Real Estate Expert You Can Trust!

TOM WISEMAN

ASSOCIATE BROKER

O: 662.268.6333 C: 662.317.0467

TWiseman@TomSmithLand.com

TomSmithLandandHomes.com



Expect More. Get More.



Information is believed to be accurate but not guaranteed.

AERIAL MAP



[Click Here for the LandId Interactive Map Link](#)

A Real Estate Expert
You Can Trust!

TOM WISEMAN

ASSOCIATE BROKER

O: 662.268.6333 C: 662.317.0467

TWiseman@TomSmithLand.com

TomSmithLandandHomes.com

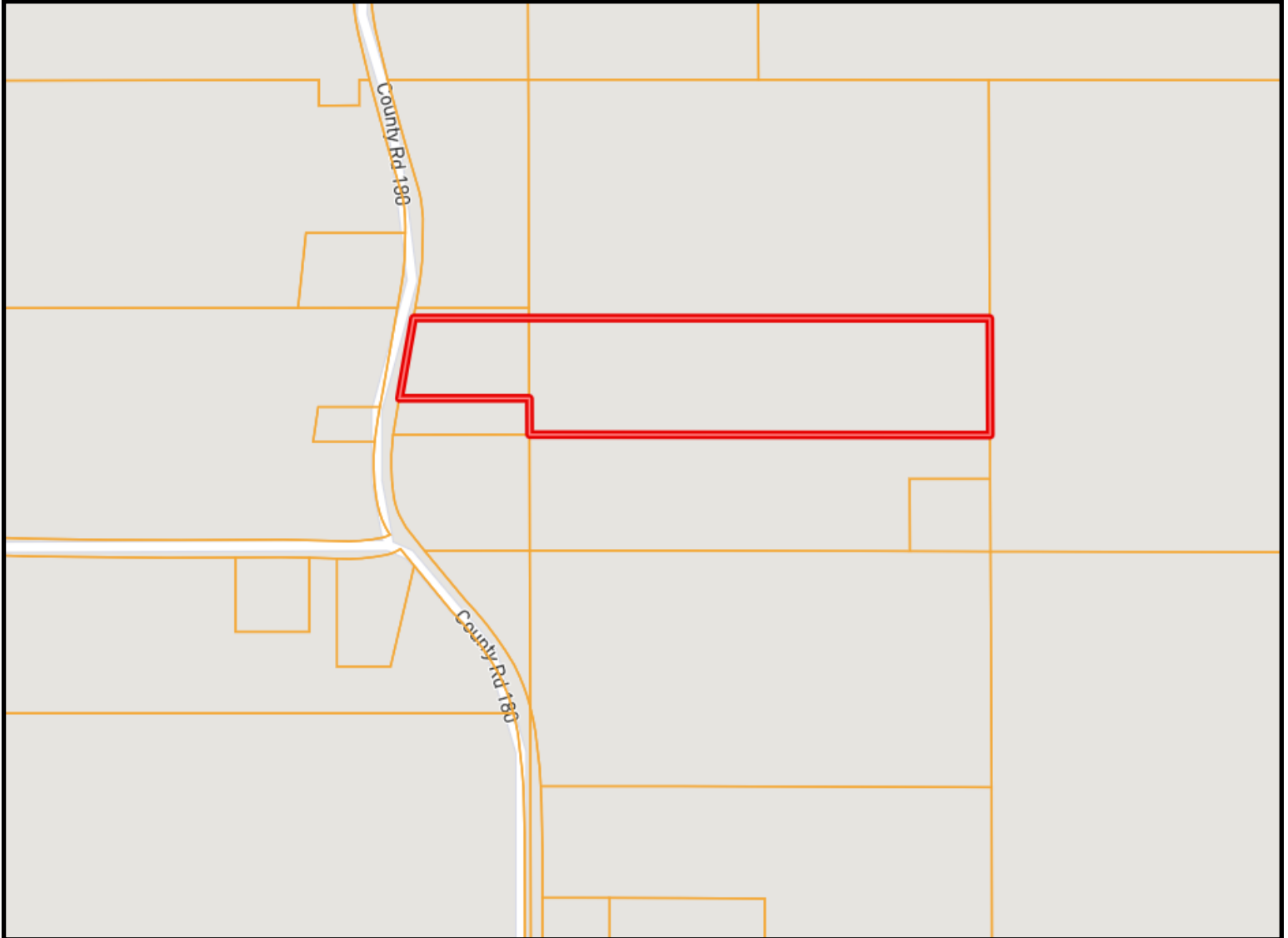


Expect More. Get More.



Information is believed to be accurate but not guaranteed.

OWNERSHIP MAP



A Real Estate Expert
You Can Trust!

TOM WISEMAN

ASSOCIATE BROKER

O: 662.268.6333 C: 662.317.0467

TWiseman@TomSmithLand.com

TomSmithLandandHomes.com

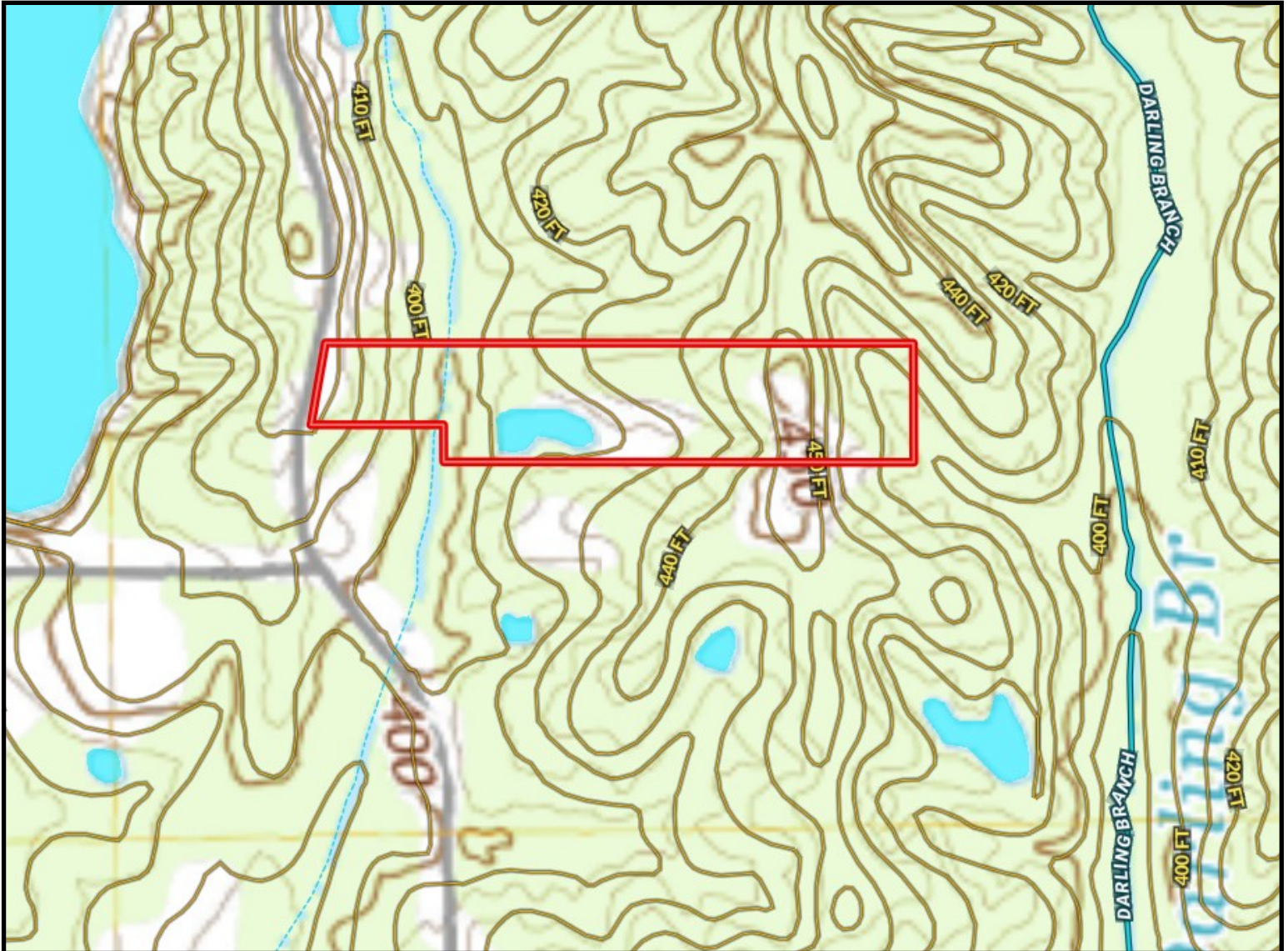


Expect More. Get More.



Information is believed to be accurate but not guaranteed.

TOPO MAP



A Real Estate Expert
You Can Trust!

TOM WISEMAN

ASSOCIATE BROKER

O: 662.268.6333 C: 662.317.0467

TWiseman@TomSmithLand.com

TomSmithLandandHomes.com

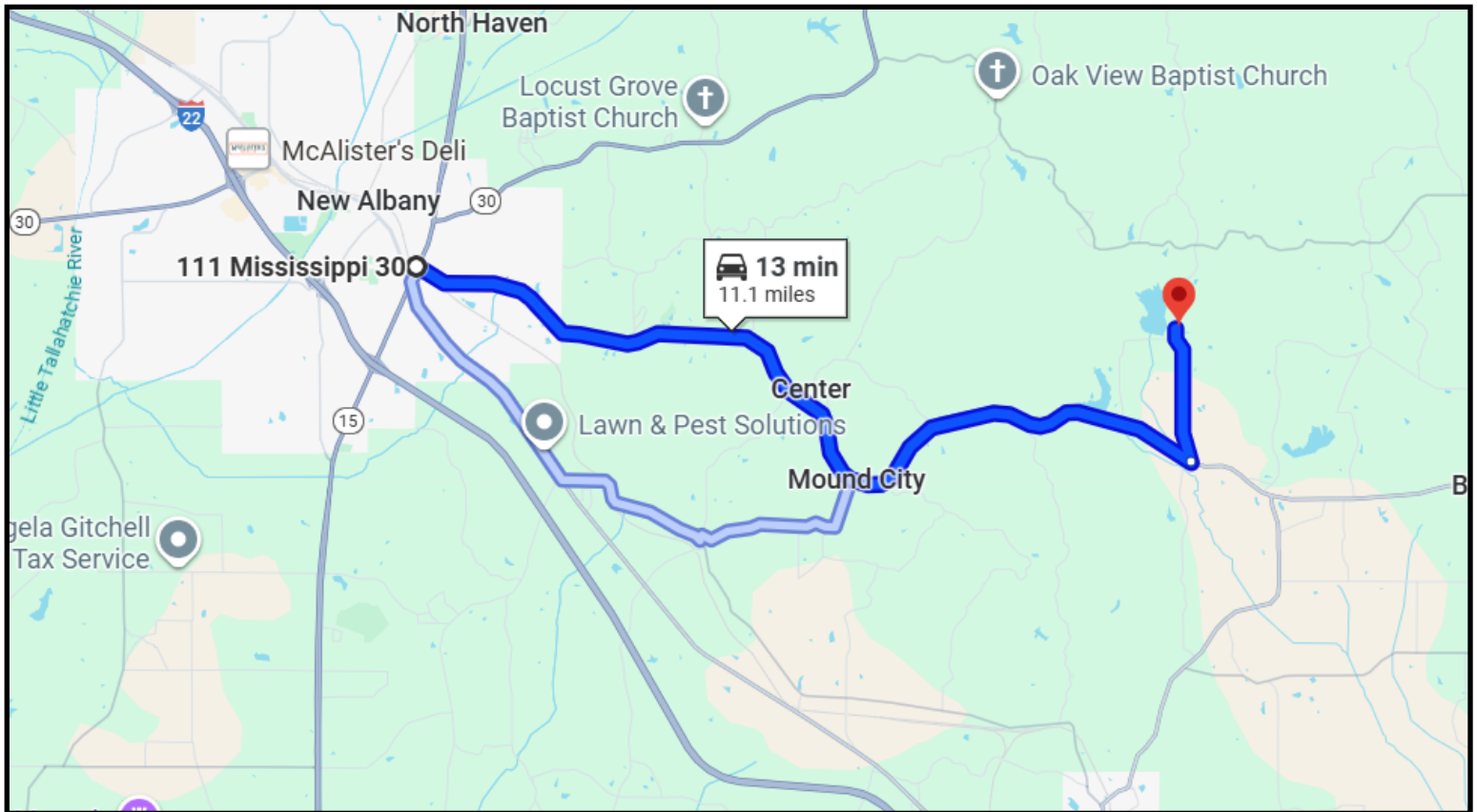


Expect More. Get More.

Information is believed to be accurate but not guaranteed.



DIRECTIONAL MAP



From the intersection of Hwy 15/Hwy 348 in New Albany, MS: Take Hwy 348 9.7 miles east to CR 180. Turn left and travel 1.4 miles to the property on the right. [Click for Google Maps Link](#)

Address: 1356 CR 180 Blue Springs, MS 38828



**TOM
WISEMAN**

ASSOCIATE BROKER

Office: 662.268.6333

Cell: 662.317.0467

TWiseman@TomSmithLand.com



Expect More. Get More.

A Real Estate Expert You Can Trust

TomSmithLandandHomes.com

Information is believed to be accurate but not guaranteed.

