

PRIME HOMESTEAD OR RECREATIONAL OPPORTUNITY

21± ACRES IN CHOCTAW COUNTY, MS



\$57,000

This 21± acre property in Choctaw County, Mississippi is a great spot for a homesite, hunting land, or weekend getaway. It offers a variety opportunities having mixed timber along with gentle rolling terrain. The land has county road frontage and access to utilities, making it easy to build a house or cabin. Whether you're looking to build, invest, or just have a weekend getaway, this property offers a little bit of everything. Call Brady or Landen to schedule your private showing today!



BRADY RICHARDSON
REALTOR®

O: 601.898.2772 | C: 662.418.8791
Brady@TomSmithLand.com



Expect More. Get More.



LANDEN ROGERS
REALTOR®

O: 662.268.6333 | C: 662.418.4604
Landen@TomSmithLand.com

TomSmithLandandHomes.com

Information is believed to be accurate but not guaranteed.





BRADY RICHARDSON
REALTOR®
O: 601.898.2772 | C: 662.418.8791
Brady@TomSmithLand.com

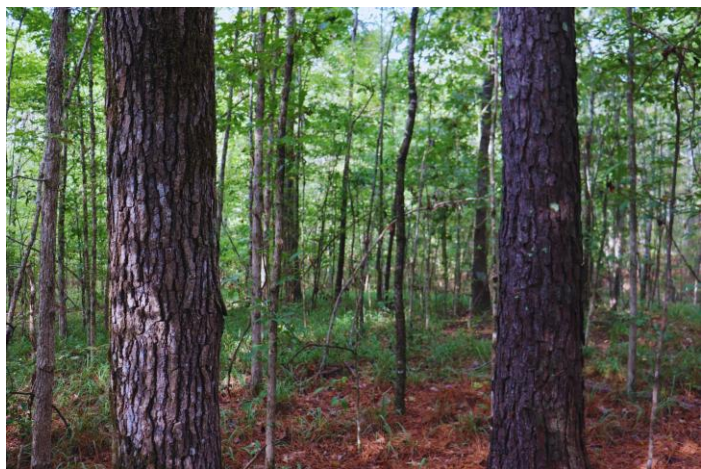


LANDEN ROGERS
REALTOR®
O: 662.268.6333 | C: 662.418.4604
Landen@TomSmithLand.com

TomSmithLandandHomes.com

Information is believed to be accurate but not guaranteed.





BRADY RICHARDSON
REALTOR®
O: 601.898.2772 | C: 662.418.8791
Brady@TomSmithLand.com



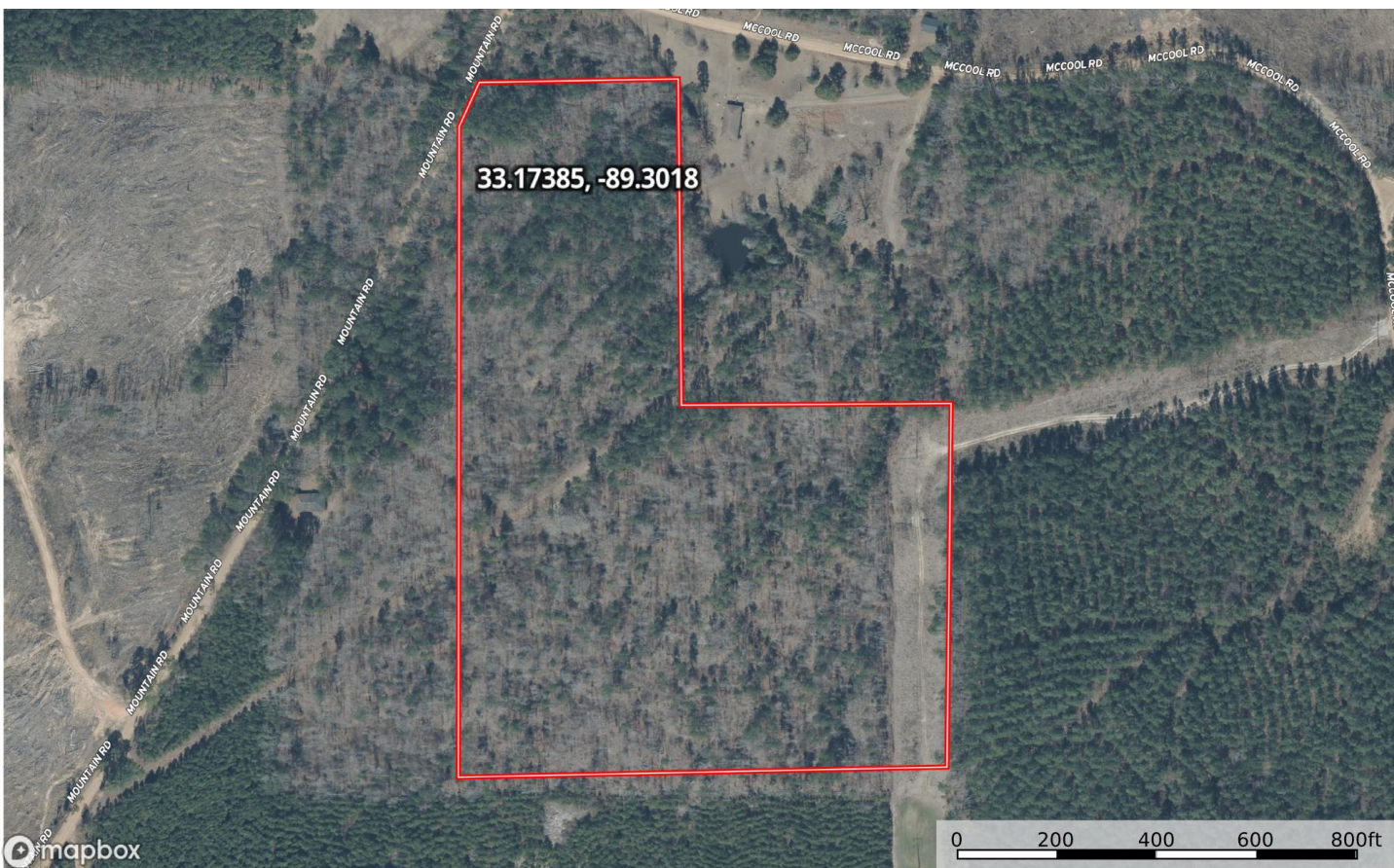
LANDEN ROGERS
REALTOR®
O: 662.268.6333 | C: 662.418.4604
Landen@TomSmithLand.com

TomSmithLandandHomes.com

Information is believed to be accurate but not guaranteed.



AERIAL MAP



LAND ID MAP LINK

BRADY RICHARDSON
REALTOR®
O: 601.898.2772 | C: 662.418.8791
Brady@TomSmithLand.com



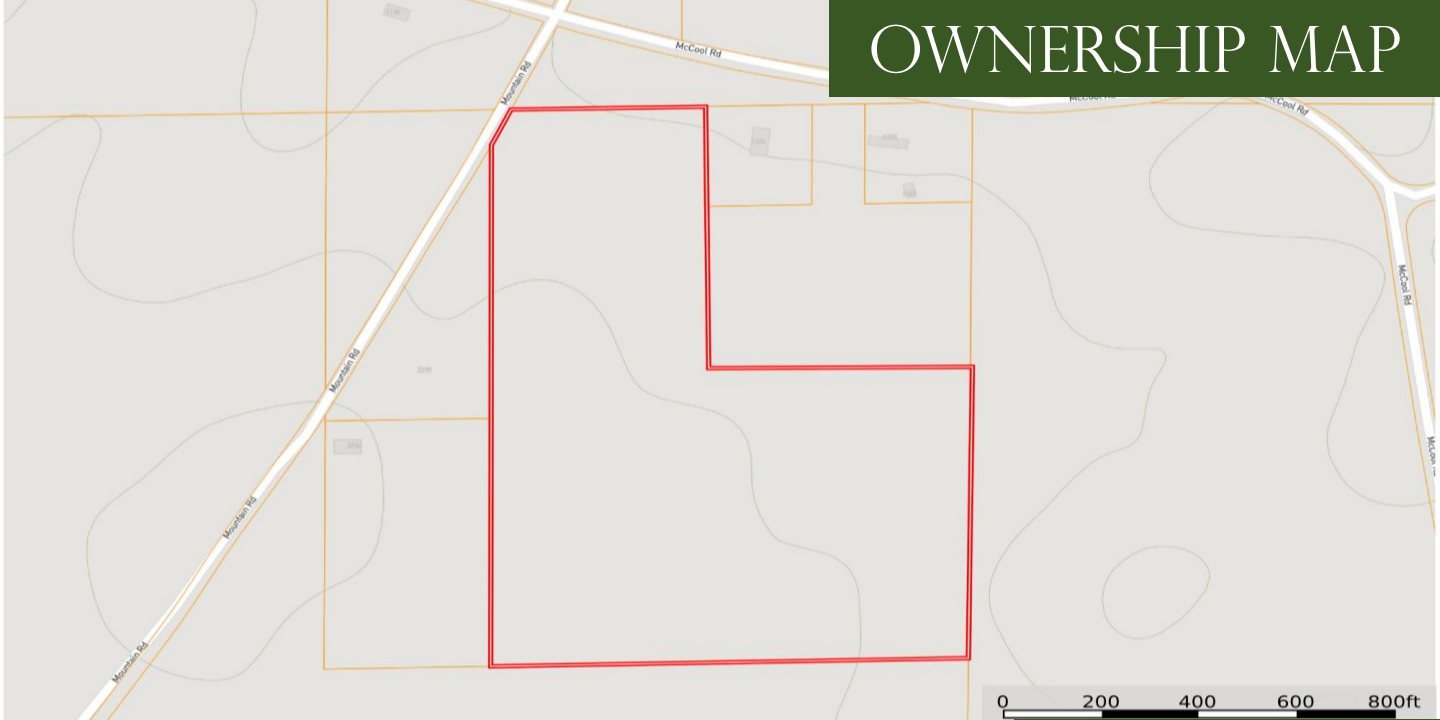
LANDEN ROGERS
REALTOR®
O: 662.268.6333 | C: 662.418.4604
Landen@TomSmithLand.com

TomSmithLandandHomes.com

Information is believed to be accurate but not guaranteed.



OWNERSHIP MAP



TOPO MAP



BRADY RICHARDSON
REALTOR®

O: 601.898.2772 | C: 662.418.8791

Brady@TomSmithLand.com



LANDEN ROGERS
REALTOR®

O: 662.268.6333 | C: 662.418.4604

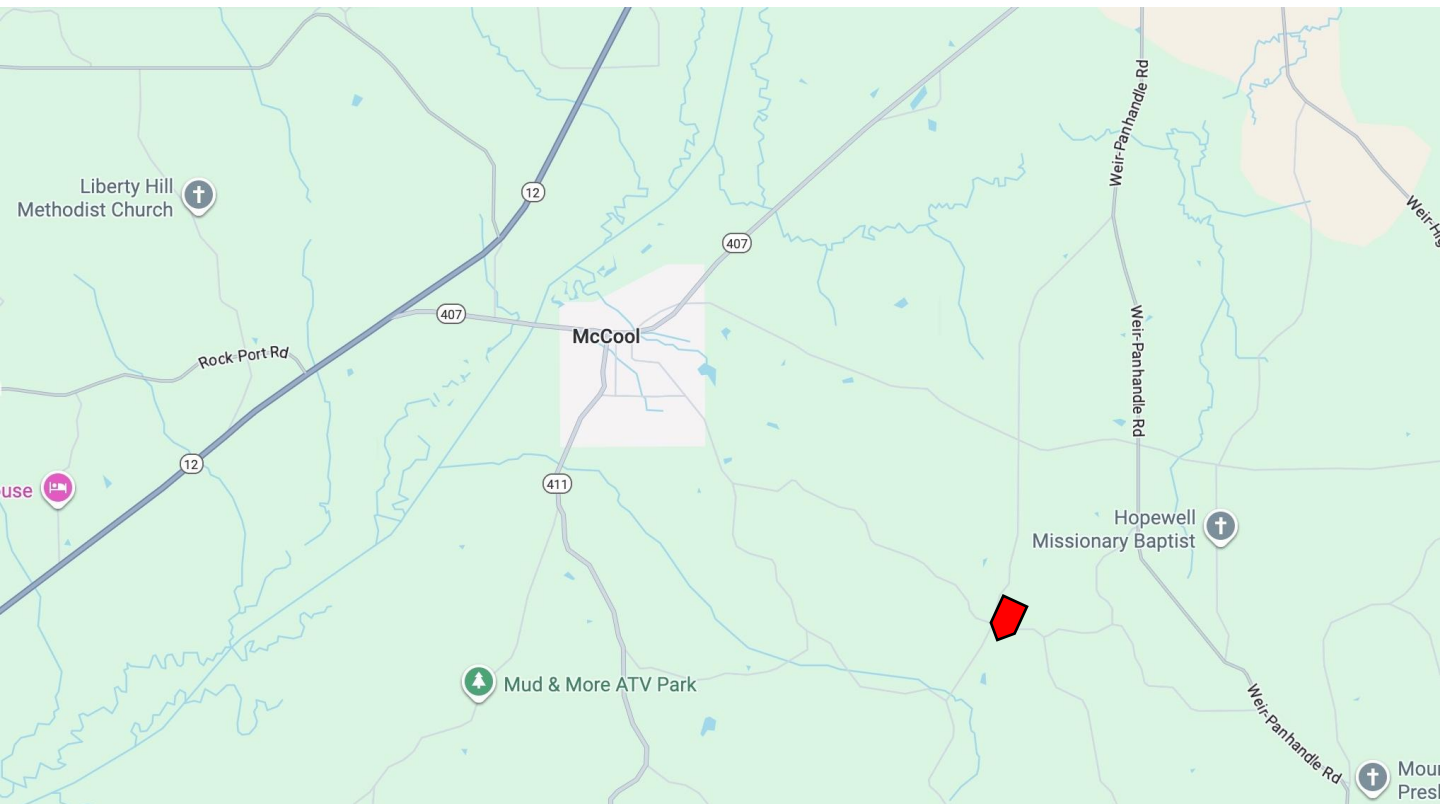
Landen@TomSmithLand.com

TomSmithLandandHomes.com

Information is believed to be accurate but not guaranteed.



DIRECTIONAL MAP



Directions from the Intersection of HWY 12 and 407: Head east on 407 for 1.9 miles and turn right onto CR 2026. Travel for 1.2 miles and continue onto McCool-Highpoint Rd. After 1.1 miles turn right onto Mountain Rd. In 1.3 miles the property will be on your left. [Google Map Link](#)

BRADY RICHARDSON
REALTOR®
O: 601.898.2772 | C: 662.418.8791
Brady@TomSmithLand.com



LANDEN ROGERS
REALTOR®
O: 662.268.6333 | C: 662.418.4604
Landen@TomSmithLand.com

TomSmithLandandHomes.com

Information is believed to be accurate but not guaranteed.

