

# Prime Industrial Warehouse

## Sunflower County, MS



**\$275,000**

### **410 Highway 49 North Indianola, MS 38751**

Unlock your business potential with this  $\pm 14,000$  sq. ft. warehouse on 2.2 acres, strategically located between Farmers Grain Terminal and Donald Oakes Trucking. Fully semi-truck accessible with 200 ft. of Highway 49 N frontage and  $\pm 4,400$  vehicles passing daily. Zoned I-1 (Industrial), this property is perfect for logistics, manufacturing, or industrial operations. High visibility, easy access, endless possibilities. Call Emerson to view this property today!

**Directions from the intersection of Hwy 49 and Hwy 82 in Indianola, MS:** Travel North on Martin Luther Kind Dr. for approximately 1.1 mile and the destination will be on the right.

[Click for Google Maps.](#)



**EMERSON  
LOVELACE**

REALTOR®

Office: 662.441.2500

Cell: 601.715.3302

[Emerson@TomSmithLand.com](mailto:Emerson@TomSmithLand.com)



Expect More. Get More.

**A Real Estate Expert You Can Trust**

[TomSmithLandandHomes.com](http://TomSmithLandandHomes.com)

Information is believed to be accurate but not guaranteed.







**A Real Estate Expert**  
*You Can Trust!*

**EMERSON LOVELACE**  
REALTOR®

O: 662.441.2500 C: 601.715.3302

Emerson@TomSmithLand.com

TomSmithLandandHomes.com



Expect More. Get More.



Information is believed to be accurate but not guaranteed.



# AERIAL MAP



[Click for Interactive Map](#)

**A Real Estate Expert**  
*You Can Trust!*

**EMERSON LOVELACE**  
REALTOR®

O: 662.441.2500 C: 601.715.3302

Emerson@TomSmithLand.com

TomSmithLandandHomes.com

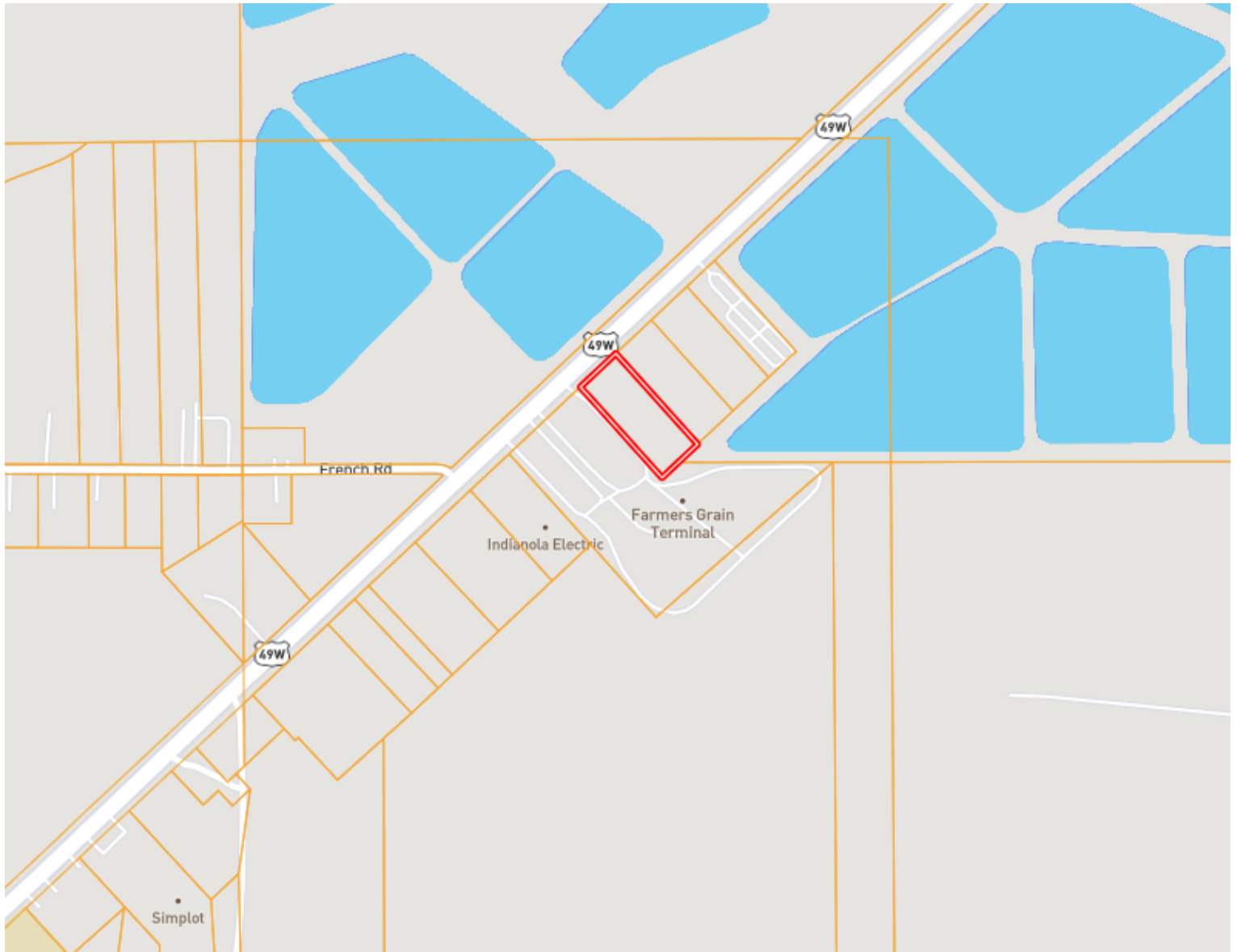


Expect More. Get More.



Information is believed to be accurate but not guaranteed.

# OWNERSHIP MAP



**A Real Estate Expert**  
*You Can Trust!*

**EMERSON LOVELACE**  
REALTOR®

O: 662.441.2500 C: 601.715.3302

Emerson@TomSmithLand.com

TomSmithLandandHomes.com

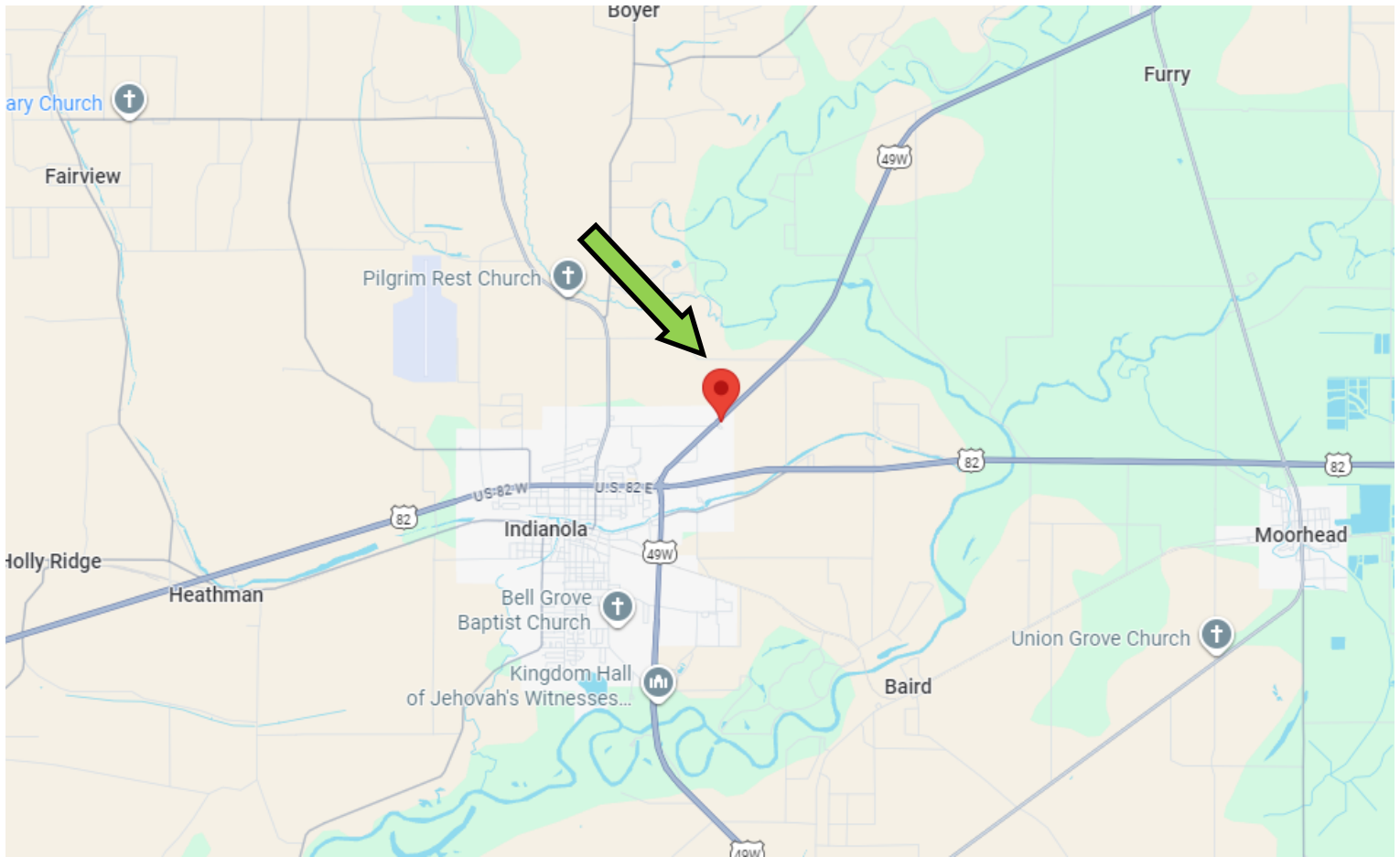


Expect More. Get More.



Information is believed to be accurate but not guaranteed.

# DIRECTIONAL MAP



**Address: 410 Highway 49 North Indianola, MS 38751**

**Directions from the intersection of Hwy 49 and Hwy 82 in Indianola, MS:** Travel North on Martin Luther Kind Dr. for approximately 1.1 mile and the destination will be on the right.

[Click for Google Maps.](#)

**A Real Estate Expert**  
*You Can Trust!*

**EMERSON LOVELACE**  
REALTOR®

O: 662.441.2500 C: 601.715.3302

Emerson@TomSmithLand.com

TomSmithLandandHomes.com

**Tom  
Smith  
LAND AND  
HOMES**

Expect More. Get More.

LandReport  
2011-2025  
AMERICA'S  
**BEST**  
BROKERAGES

Information is believed to be accurate but not guaranteed.