

Bayou—Front Home

Sunflower County, MS



\$279,500

6 Morningside Drive Indianola, MS 38751

Take a look at this spacious three bedroom, three and a half bathroom brick home nestled in a friendly neighborhood along Indian Bayou. Built in 1960, this 2,733 sq ft residence offers a two car carport, a living space featuring a wood-burning fireplace, a kitchen with stainless steel appliances, and ample room for entertaining. The home's layout includes generously sized bedrooms, multiple living areas, and abundant storage throughout. Enjoy the outdoors from your own backyard oasis with serene views of Indian Bayou. The property also includes a one bedroom, one bathroom guest house—perfect for visitors, a home office, or rental income. Situated above a spacious basement storage area and accessible from the rear of the main house, it adds flexibility and value to this unique offering. Call Emerson to view this property today!



**EMERSON
LOVELACE**

REALTOR®

Office: 662.441.2500

Cell: 601.715.3302

Emerson@TomSmithLand.com



Expect More. Get More.

A Real Estate Expert You Can Trust

TomSmithLandandHomes.com

Information is believed to be accurate but not guaranteed.





A Real Estate Expert
You Can Trust!

EMERSON LOVELACE
REALTOR®

O: 662.441.2500 C: 601.715.3302

Emerson@TomSmithLand.com

TomSmithLandandHomes.com

**Tom
Smith
LAND AND
HOMES**

Expect More. Get More.

2011-2025
BEST
BROKERAGES

Information is believed to be accurate but not guaranteed.



A Real Estate Expert
You Can Trust!

EMERSON LOVELACE
REALTOR®

O: 662.441.2500 C: 601.715.3302

Emerson@TomSmithLand.com

TomSmithLandandHomes.com

Tom Smith
LAND AND HOMES

Expect More. Get More.

2011-2025
BEST
BROKERAGES

Information is believed to be accurate but not guaranteed.



A Real Estate Expert
You Can Trust!

EMERSON LOVELACE
REALTOR®

O: 662.441.2500 C: 601.715.3302

Emerson@TomSmithLand.com

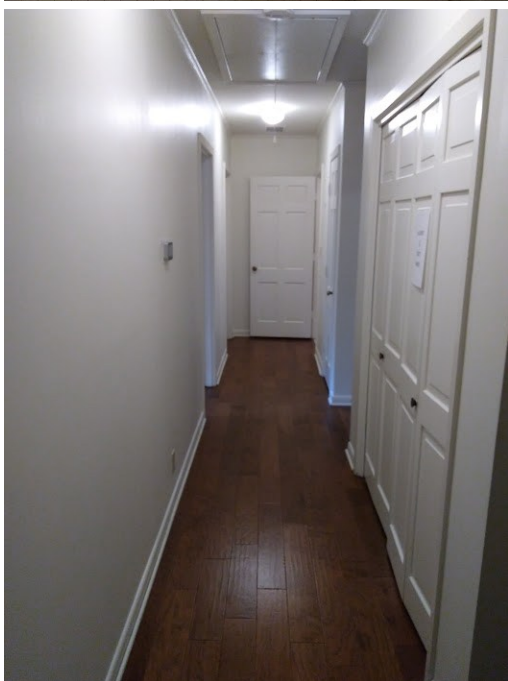
TomSmithLandandHomes.com

Tom Smith
LAND AND HOMES

Expect More. Get More.

2011-2025
BEST
BROKERAGES

Information is believed to be accurate but not guaranteed.



A Real Estate Expert You Can Trust!

EMERSON LOVELACE
REALTOR®

O: 662.441.2500 C: 601.715.3302

Emerson@TomSmithLand.com

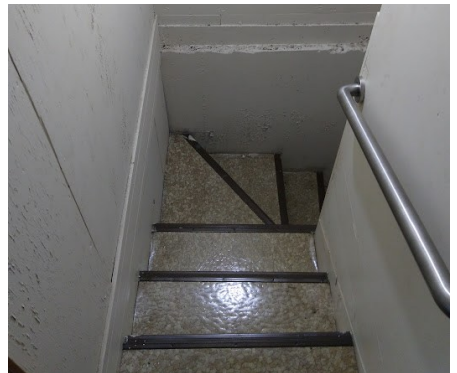
TomSmithLandandHomes.com

**Tom
Smith
LAND AND
HOMES**

Expect More. Get More.

2011-2025
BEST
BROKERAGES

Information is believed to be accurate but not guaranteed.



A Real Estate Expert You Can Trust!

EMERSON LOVELACE
REALTOR®

O: 662.441.2500 C: 601.715.3302

Emerson@TomSmithLand.com

TomSmithLandandHomes.com

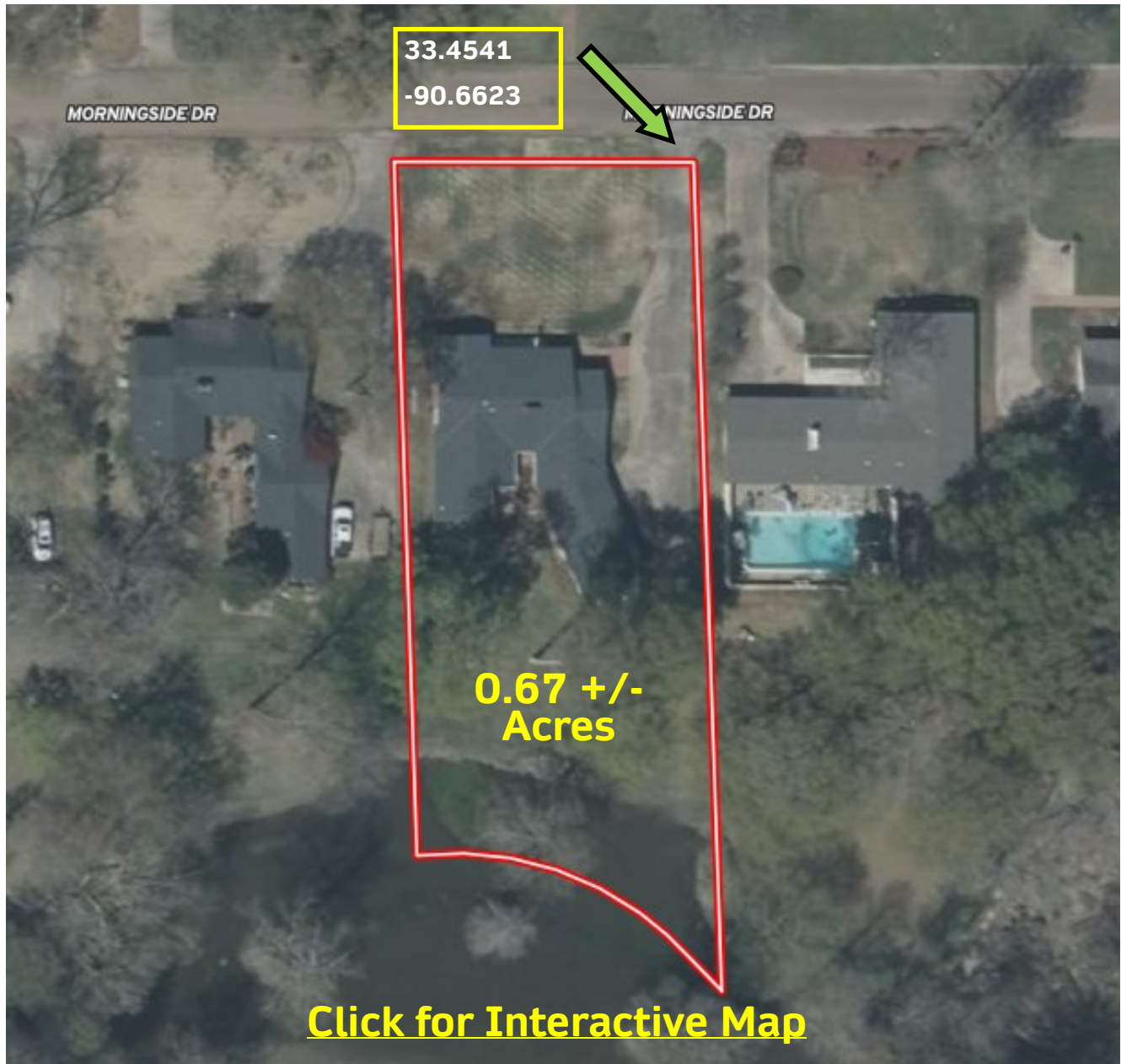
**Tom
Smith
LAND AND
HOMES**

Expect More. Get More.

2011-2025
BEST
BROKERAGES

Information is believed to be accurate but not guaranteed.

AERIAL MAP



A Real Estate Expert
You Can Trust!

EMERSON LOVELACE
REALTOR®

O: 662.441.2500 C: 601.715.3302

Emerson@TomSmithLand.com

TomSmithLandandHomes.com

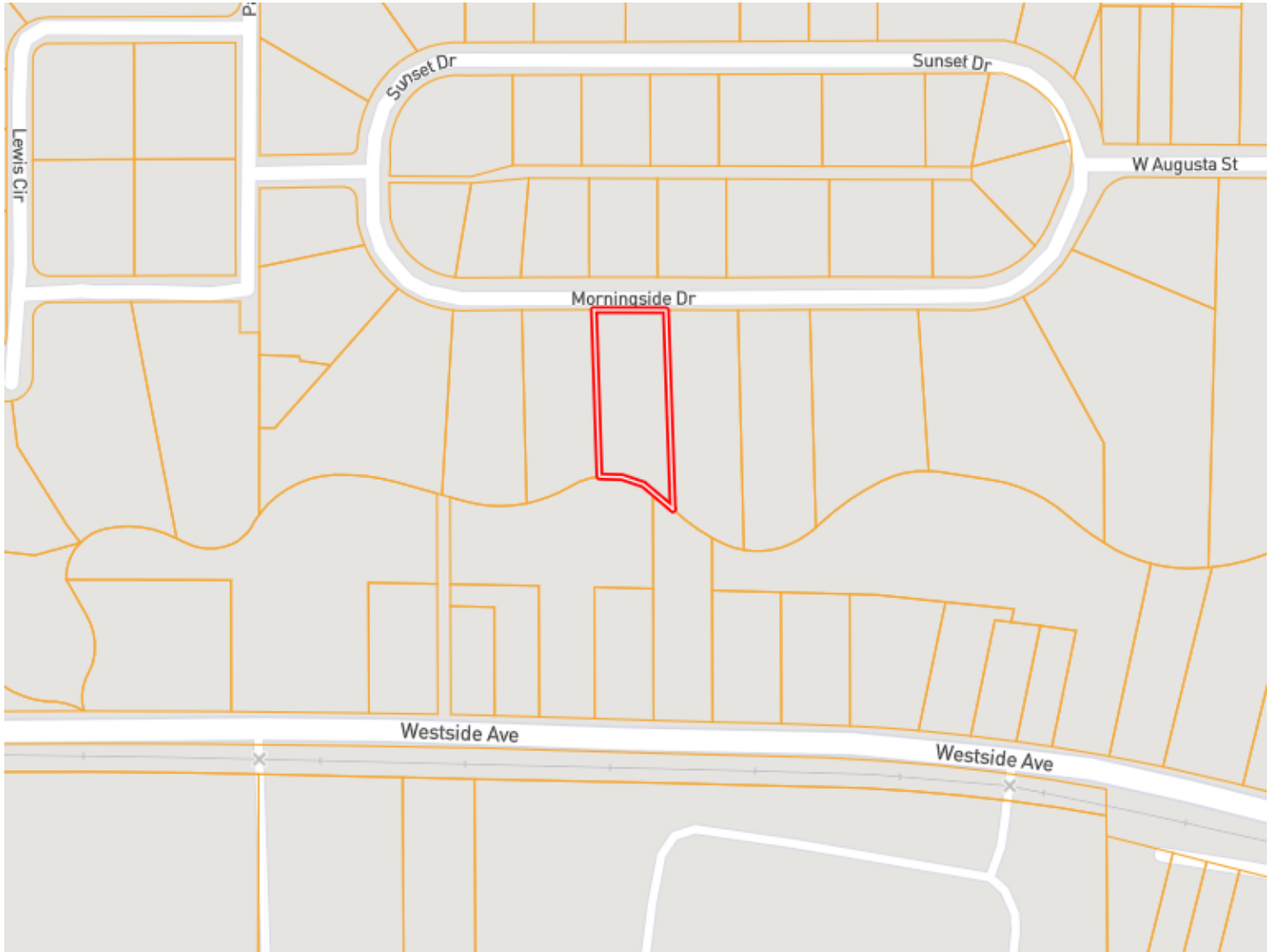


Expect More. Get More.



Information is believed to be accurate but not guaranteed.

OWNERSHIP MAP



A Real Estate Expert
You Can Trust!

EMERSON LOVELACE
REALTOR®

O: 662.441.2500 C: 601.715.3302

Emerson@TomSmithLand.com

TomSmithLandandHomes.com

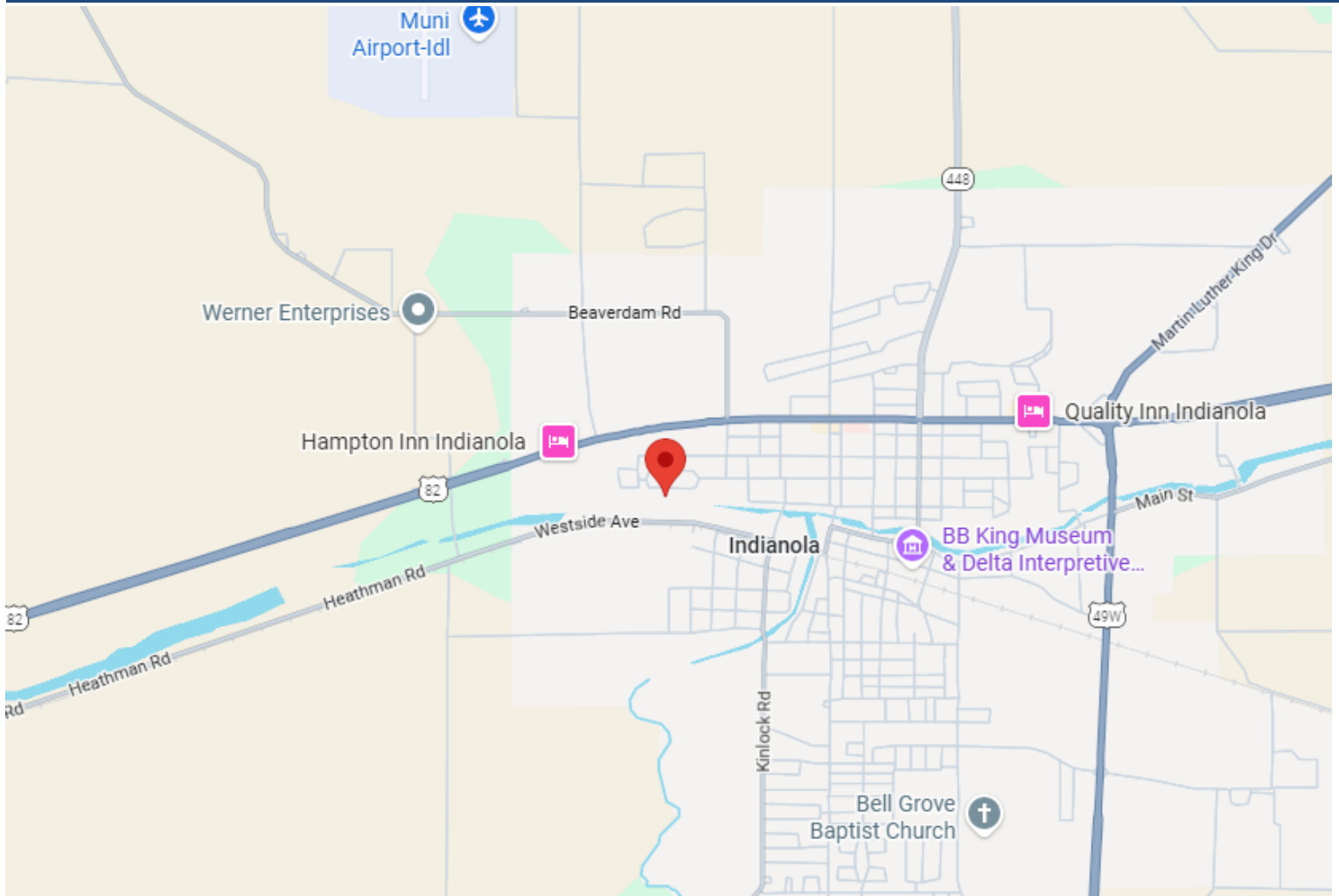


Expect More. Get More.



Information is believed to be accurate but not guaranteed.

DIRECTIONAL MAP



Address: 6 Morningside Dr. Indianola, MS 38751

Directions from the intersection of Hwy 49 and Hwy 82 in Indianola, MS: Travel West on Hwy. 82 for approximately 1.5 miles. Turn left onto Marie Ave and in 0.2 miles turn right onto W. Augusta St. In 0.1 miles turn left onto Morningside Dr. and in 0.2 miles the house will be on the left. [Click for Google Maps.](#)

A Real Estate Expert
You Can Trust!

EMERSON LOVELACE
REALTOR®

O: 662.441.2500 C: 601.715.3302

Emerson@TomSmithLand.com

TomSmithLandandHomes.com

Tom Smith
LAND AND HOMES

Expect More. Get More.

2011-2025
AMERICA'S
BEST
BROKERAGES

Information is believed to be accurate but not guaranteed.