

# Beautiful Home

## Sunflower County, MS



**\$340,000**

### 7 Morningside Drive Indianola, MS 38751

Immaculate four bedroom, two and a half bath home with a converted fifth bedroom, offering approximately 2,544 sq. ft. of living space on a 0.68+/- acre bayou-front lot (110x269) in one of Indianola's most sought-after neighborhoods. Features include a spacious living area with a wood-burning fireplace, granite countertops, stainless steel appliances, storm windows, and a security system. Interior highlights showcase brick, hardwood, and ceramic tile flooring, plus a brand-new roof (2024). Outdoor amenities include a gunite swimming pool, sprinkler system, covered patio, back porch, and a private brick-walled backyard. Complete with a two-car carport, this home combines elegance, comfort, and exceptional condition. Call Emerson to view this property today!

**EMERSON  
LOVELACE**

REALTOR®

Office: 662.441.2500

Cell: 601.715.3302

[Emerson@TomSmithLand.com](mailto:Emerson@TomSmithLand.com)



Expect More. Get More.



### A Real Estate Expert You Can Trust

[TomSmithLandandHomes.com](http://TomSmithLandandHomes.com)

Information is believed to be accurate but not guaranteed.







## A Real Estate Expert You Can Trust!

**EMERSON LOVELACE**  
REALTOR®

O: 662.441.2500 C: 601.715.3302

Emerson@TomSmithLand.com

TomSmithLandandHomes.com



Expect More. Get More.



Information is believed to be accurate but not guaranteed.





**A Real Estate Expert**  
*You Can Trust!*

**EMERSON LOVELACE**  
REALTOR®

O: 662.441.2500 C: 601.715.3302

Emerson@TomSmithLand.com

TomSmithLandandHomes.com

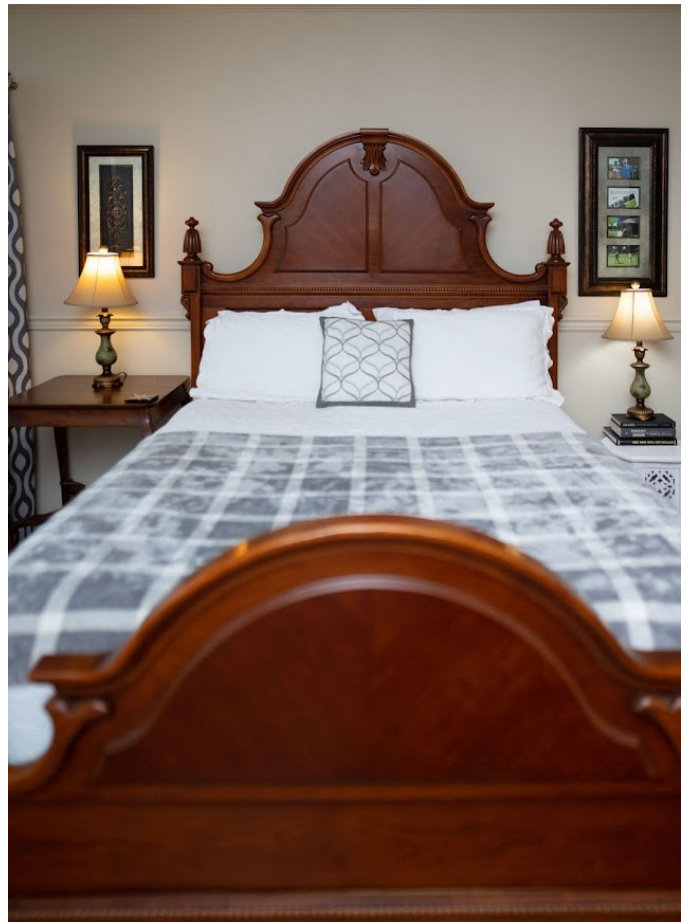
**Tom  
Smith  
LAND AND  
HOMES**

Expect More. Get More.

2011-2025  
BEST  
BROKERAGES

Information is believed to be accurate but not guaranteed.





## A Real Estate Expert You Can Trust!

**EMERSON LOVELACE**  
REALTOR®

O: 662.441.2500 C: 601.715.3302

Emerson@TomSmithLand.com

TomSmithLandandHomes.com

**Tom  
Smith  
LAND AND  
HOMES**

Expect More. Get More.

2011-2025  
BEST  
BROKERAGES

Information is believed to be accurate but not guaranteed.



## A Real Estate Expert You Can Trust!

**EMERSON LOVELACE**  
REALTOR®

O: 662.441.2500 C: 601.715.3302

Emerson@TomSmithLand.com

TomSmithLandandHomes.com

**Tom  
Smith  
LAND AND  
HOMES**

Expect More. Get More.

2011-2025  
NATIONAL  
BEST  
BROKERAGES

Information is believed to be accurate but not guaranteed.



# AERIAL MAP



**A Real Estate Expert**  
*You Can Trust!*

**EMERSON LOVELACE**  
REALTOR®

O: 662.441.2500 C: 601.715.3302

Emerson@TomSmithLand.com

TomSmithLandandHomes.com

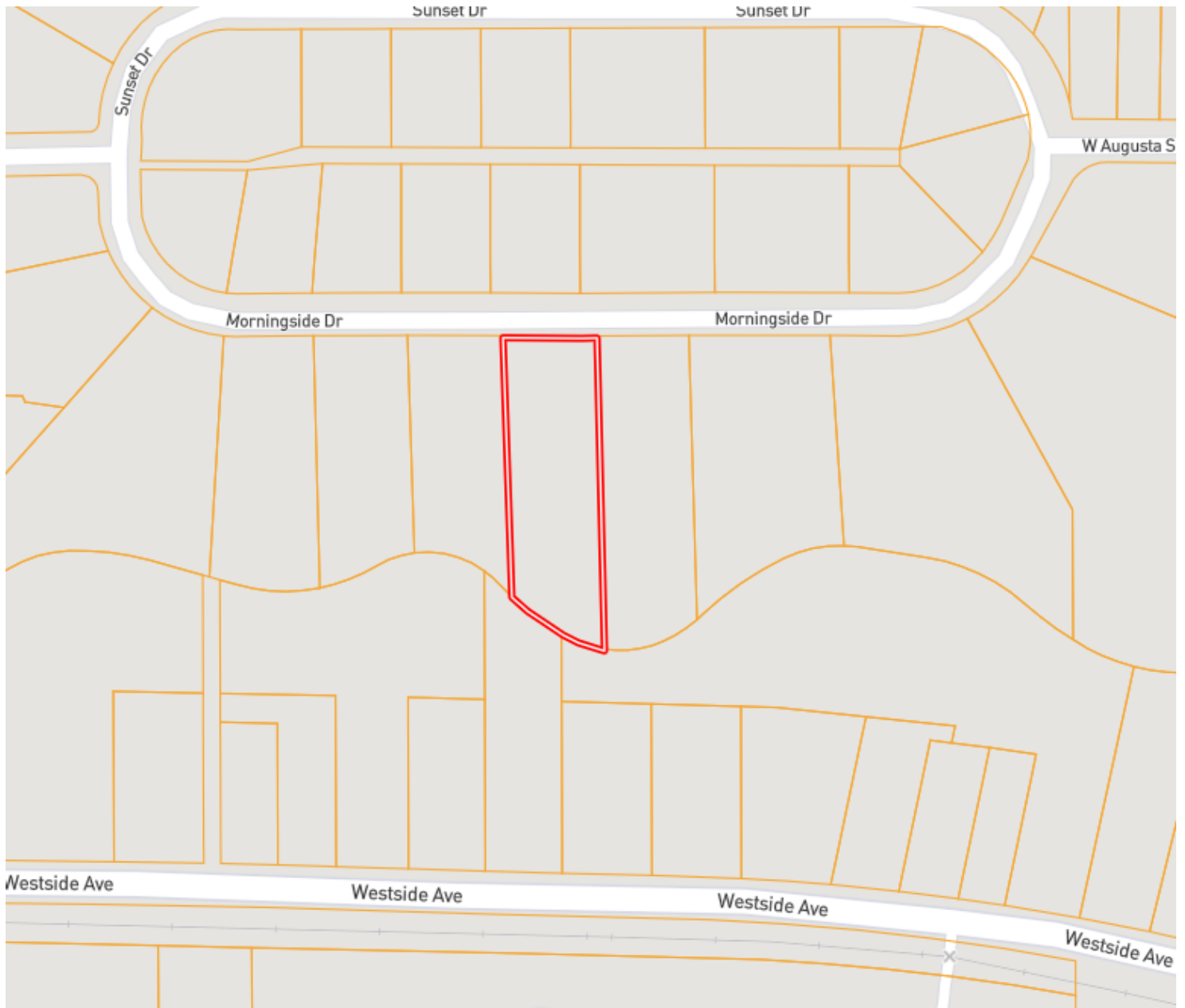


Expect More. Get More.



Information is believed to be accurate but not guaranteed.

# OWNERSHIP MAP



**A Real Estate Expert**  
*You Can Trust!*

**EMERSON LOVELACE**  
REALTOR®

O: 662.441.2500 C: 601.715.3302

Emerson@TomSmithLand.com

TomSmithLandandHomes.com

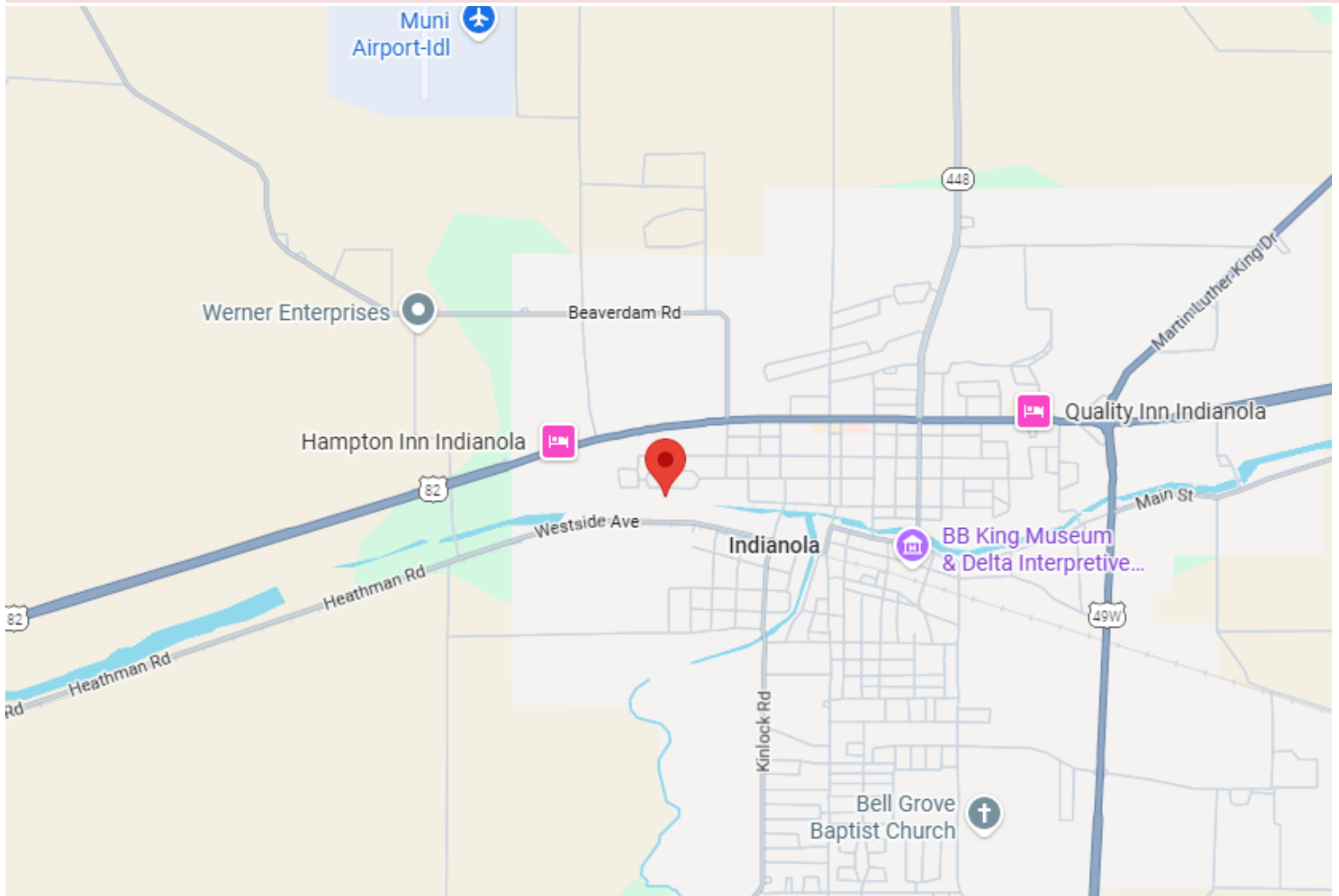


Expect More. Get More.



Information is believed to be accurate but not guaranteed.

# DIRECTIONAL MAP



**Address: 7 Morningside Dr. Indianola, MS 38751**

**Directions from the intersection of Hwy 49 and Hwy 82 in Indianola, MS:** Travel West on Hwy. 82 for approximately 1.5 miles. Turn left onto Marie Ave and in 0.2 miles turn right onto W. Augusta St. In 0.1 miles turn left onto Morningside Dr. and in 0.1 miles the house will be on the left. [Click for Google Maps.](#)

**A Real Estate Expert**  
*You Can Trust!*

**EMERSON LOVELACE**  
REALTOR®

O: 662.441.2500 C: 601.715.3302

Emerson@TomSmithLand.com

TomSmithLandandHomes.com



Expect More. Get More.



Information is believed to be accurate but not guaranteed.