

3 Bedroom, 2 Bathroom Home

Sunflower County, MS



44 Blaine Rd. Doddsville, MS 38736

This property offers approximately 1,724 sq. ft., featuring three bedrooms and two bathrooms on a \pm 2.2-acre tract with Jones Bayou frontage in Sunflower Co., MS. Built in 1941, the home includes a one-car carport, central HVAC, and a functional layout suitable for a primary residence, weekend retreat, or hunting cabin. The rural setting provides privacy and recreational opportunities while maintaining convenience to surrounding communities. Call Emerson to view this property today!

Directions from the intersection of Hwy 49 and Hwy 82 in Indianola, MS: Travel West on Hwy 82 for approximately 0.7 miles. Turn right onto Hwy 448, in 1.9 miles turn right onto Steiner Rd. In 9.4 miles turn right onto Blaine Rd. and in 0.4 miles the destination is on the left. [Click for Google Maps.](#)



**EMERSON
LOVELACE**

REALTOR®

Office: 662.441.2500

Cell: 601.715.3302

Emerson@TomSmithLand.com



Expect More. Get More.

A Real Estate Expert You Can Trust

TomSmithLandandHomes.com

Information is believed to be accurate but not guaranteed.





A Real Estate Expert You Can Trust!

EMERSON LOVELACE
REALTOR®

O: 662.441.2500 C: 601.715.3302

Emerson@TomSmithLand.com

TomSmithLandandHomes.com



Expect More. Get More.



Information is believed to be accurate but not guaranteed.

AERIAL MAP



[Click for
Interactive Map](#)

A Real Estate Expert
You Can Trust!

EMERSON LOVELACE
REALTOR®

O: 662.441.2500 C: 601.715.3302

Emerson@TomSmithLand.com

TomSmithLandandHomes.com

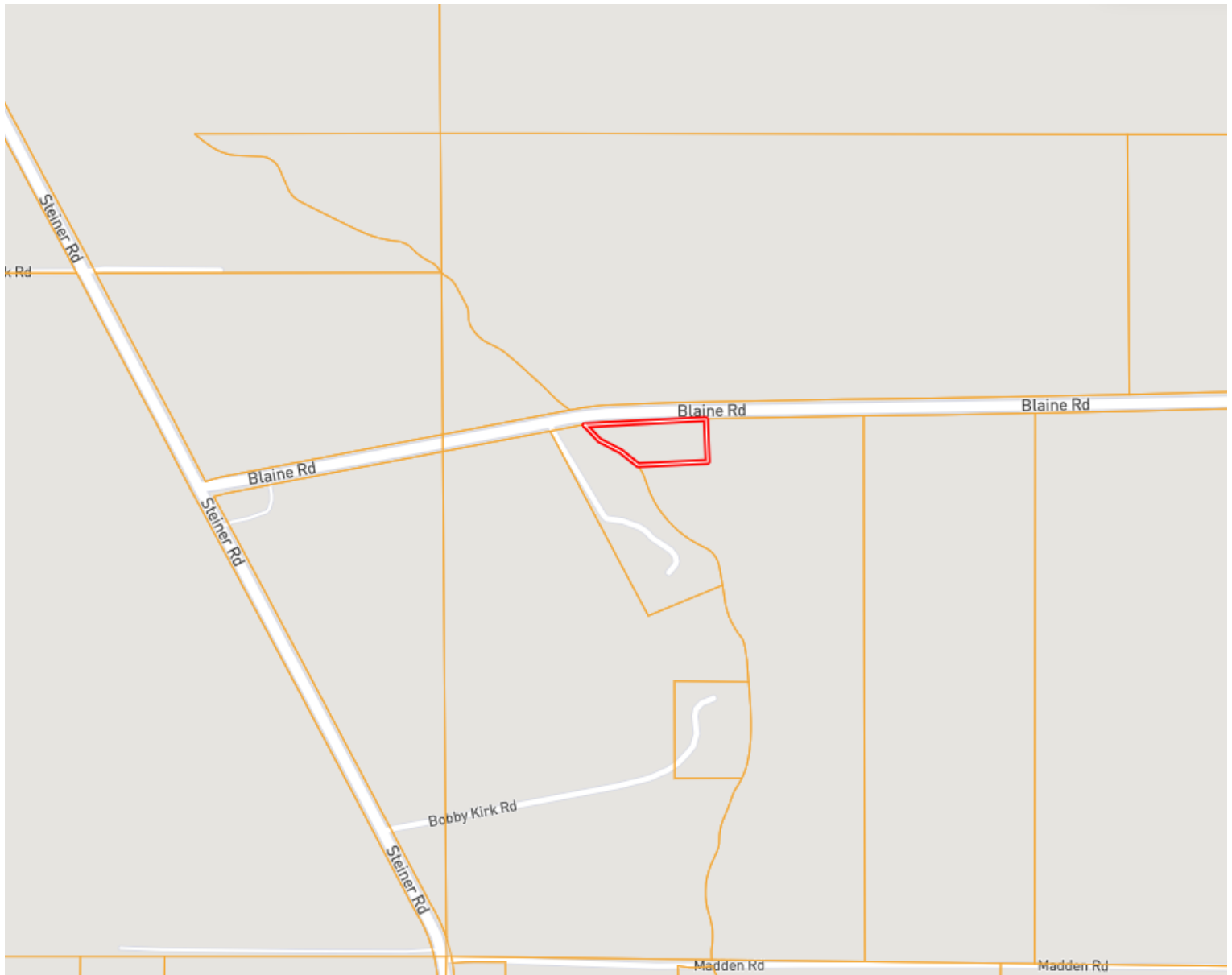


Expect More. Get More.



Information is believed to be accurate but not guaranteed.

OWNERSHIP MAP



A Real Estate Expert
You Can Trust!

EMERSON LOVELACE
REALTOR®

O: 662.441.2500 C: 601.715.3302

Emerson@TomSmithLand.com

TomSmithLandandHomes.com

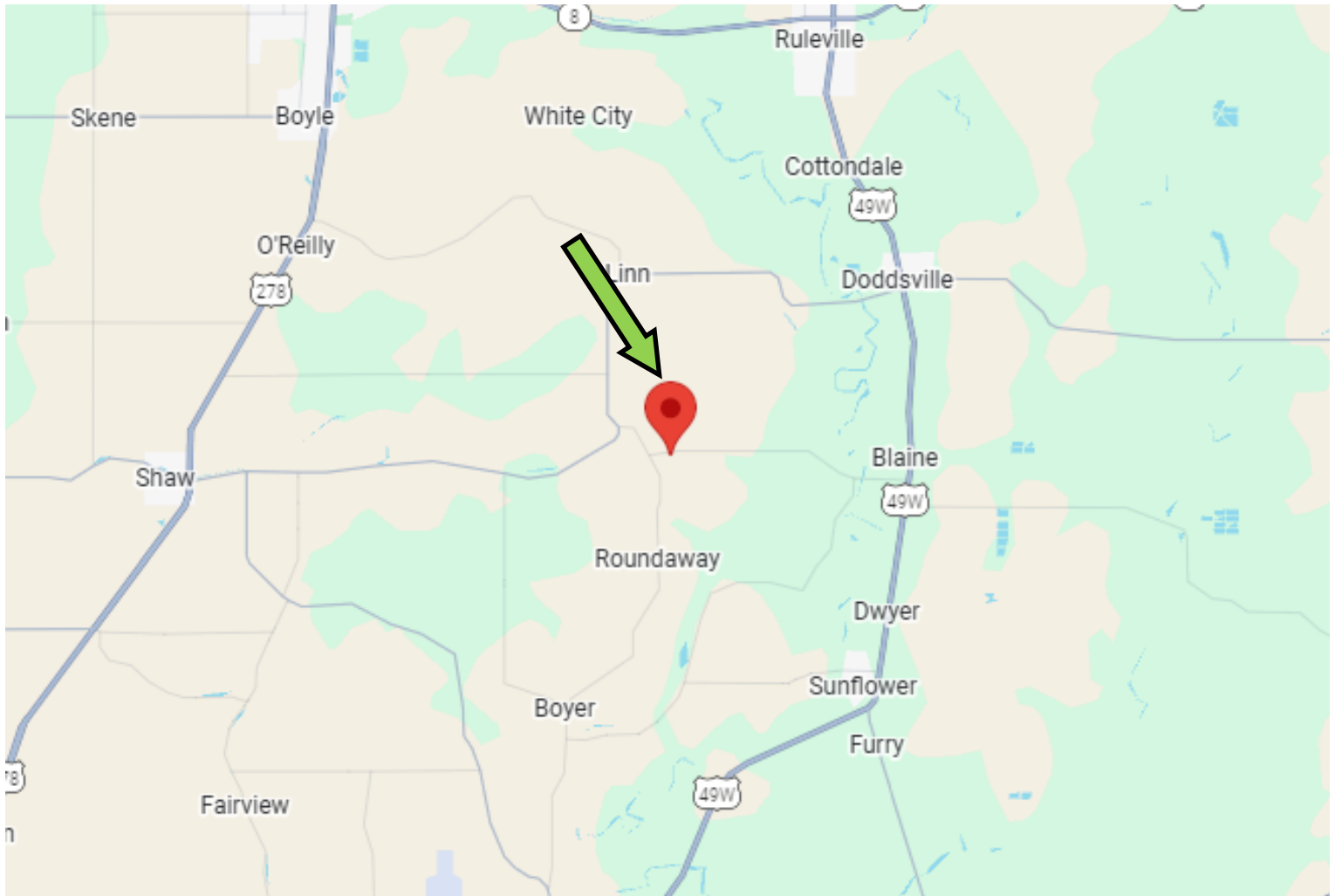


Expect More. Get More.



Information is believed to be accurate but not guaranteed.

DIRECTIONAL MAP



Address: 44 Blaine Rd. Doddsville, MS 38736

Directions from the intersection of Hwy 49 and Hwy 82 in Indianola, MS: Travel West on Hwy 82 for approximately 0.7 miles. Turn right onto Hwy 448, in 1.9 miles turn right onto Steiner Rd. In 9.4 miles turn right onto Blaine Rd. and in 0.4 miles the destination is on the left. [Click for Google Maps.](#)

A Real Estate Expert
You Can Trust!

EMERSON LOVELACE
REALTOR®

O: 662.441.2500 C: 601.715.3302

Emerson@TomSmithLand.com

TomSmithLandandHomes.com



Expect More. Get More.



Information is believed to be accurate but not guaranteed.