

602 Magnolia Dr. Indianola, MS 38751



\$280,000

Take a look at this three bedroom, three bath home on a quiet cul-de-sac with approximately 2,500+/- sq. ft. of living space located on a 0.36 +/- acre lot. The features of this home include a large master bathroom addition, hardwood flooring, storm windows, wood-burning fireplace, mud room, endless hot water system, and security system. Enjoy outdoor living with a gunite swimming pool, pergola, back porch, and wrought iron privacy fence. Two-car carport. Located in an exceptional neighborhood.

Directions from the intersection of Hwy 49 and Hwy 82 Indianola, MS: Travel West on Hwy 82 for approximately 0.2 miles, then turn left onto Seymour Dr. Turn right onto Azalea Dr. in 0.1 miles, turn right on E. Parkway Dr. in 0.1 miles, in 453 ft turn right onto Chapman St. then turn left at the 1st cross street onto Willow Dr. in 0.1 miles continue on to Magnolia Dr. and in 0.2 miles the destination will be on the left.

[Click for Google Map.](#)



**EMERSON
LOVELACE**

REALTOR®

Office: 662.441.2500

Cell: 601.715.3302

Emerson@TomSmithLand.com



Expect More. Get More.

A Real Estate Expert You Can Trust

TomSmithLandandHomes.com

Information is believed to be accurate but not guaranteed.





A Real Estate Expert
You Can Trust!

EMERSON LOVELACE
REALTOR®

O: 662.441.2500 C: 601.715.3302

Emerson@TomSmithLand.com

TomSmithLandandHomes.com



Expect More. Get More.



Information is believed to be accurate but not guaranteed.



A Real Estate Expert
You Can Trust!

EMERSON LOVELACE
REALTOR®

O: 662.441.2500 C: 601.715.3302

Emerson@TomSmithLand.com

TomSmithLandandHomes.com



Expect More. Get More.



Information is believed to be accurate but not guaranteed.



A Real Estate Expert
You Can Trust!

EMERSON LOVELACE
REALTOR®

O: 662.441.2500 C: 601.715.3302

Emerson@TomSmithLand.com

TomSmithLandandHomes.com



Expect More. Get More.



Information is believed to be accurate but not guaranteed.



A Real Estate Expert
You Can Trust!

EMERSON LOVELACE
REALTOR®

O: 662.441.2500 C: 601.715.3302

Emerson@TomSmithLand.com

TomSmithLandandHomes.com



Expect More. Get More.



Information is believed to be accurate but not guaranteed.



A Real Estate Expert
You Can Trust!

EMERSON LOVELACE
REALTOR®

O: 662.441.2500 C: 601.715.3302

Emerson@TomSmithLand.com

TomSmithLandandHomes.com

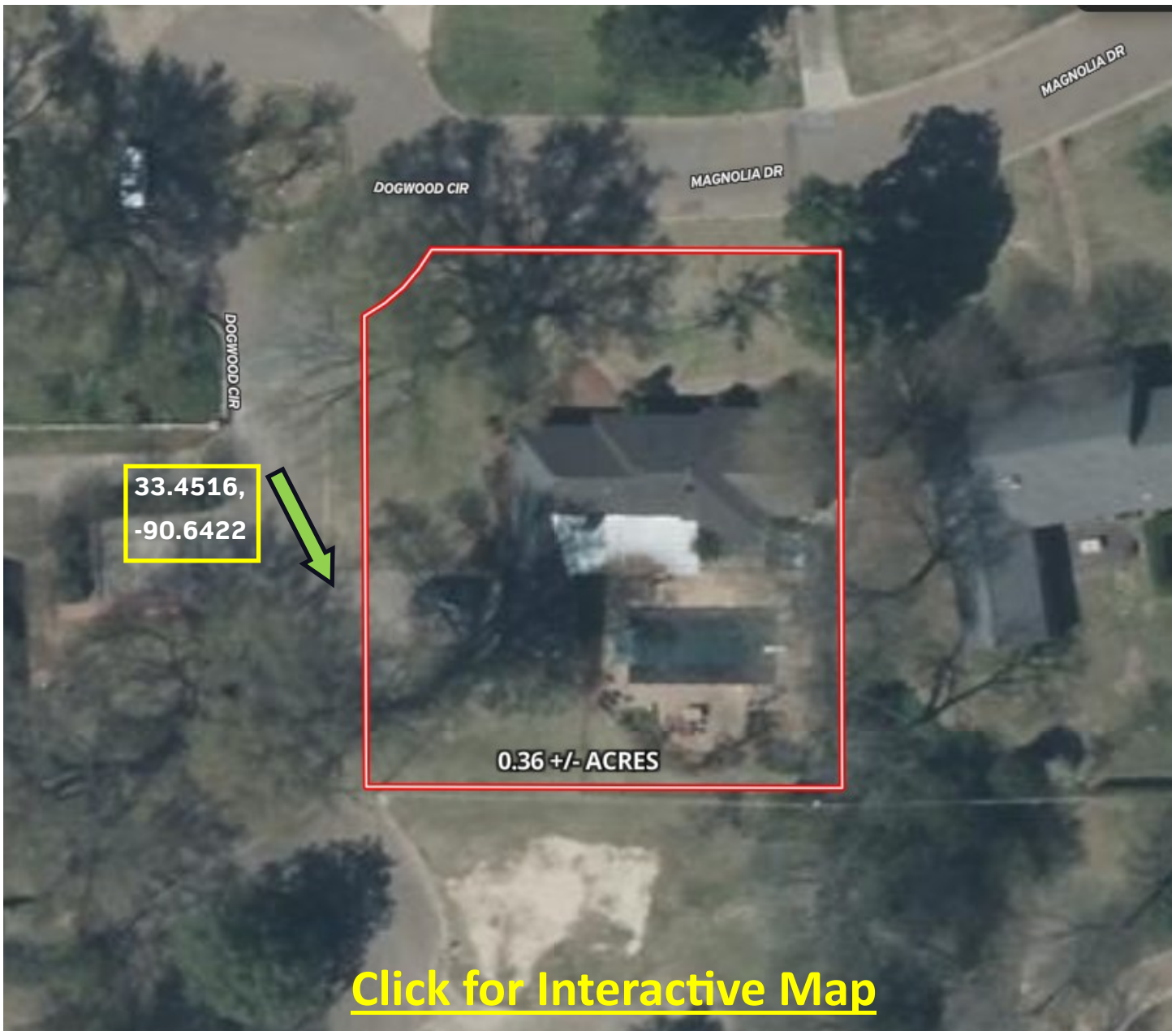


Expect More. Get More.



Information is believed to be accurate but not guaranteed.

AERIAL MAP



A Real Estate Expert
You Can Trust!

EMERSON LOVELACE
REALTOR®

O: 662.441.2500 C: 601.715.3302

Emerson@TomSmithLand.com

TomSmithLandandHomes.com

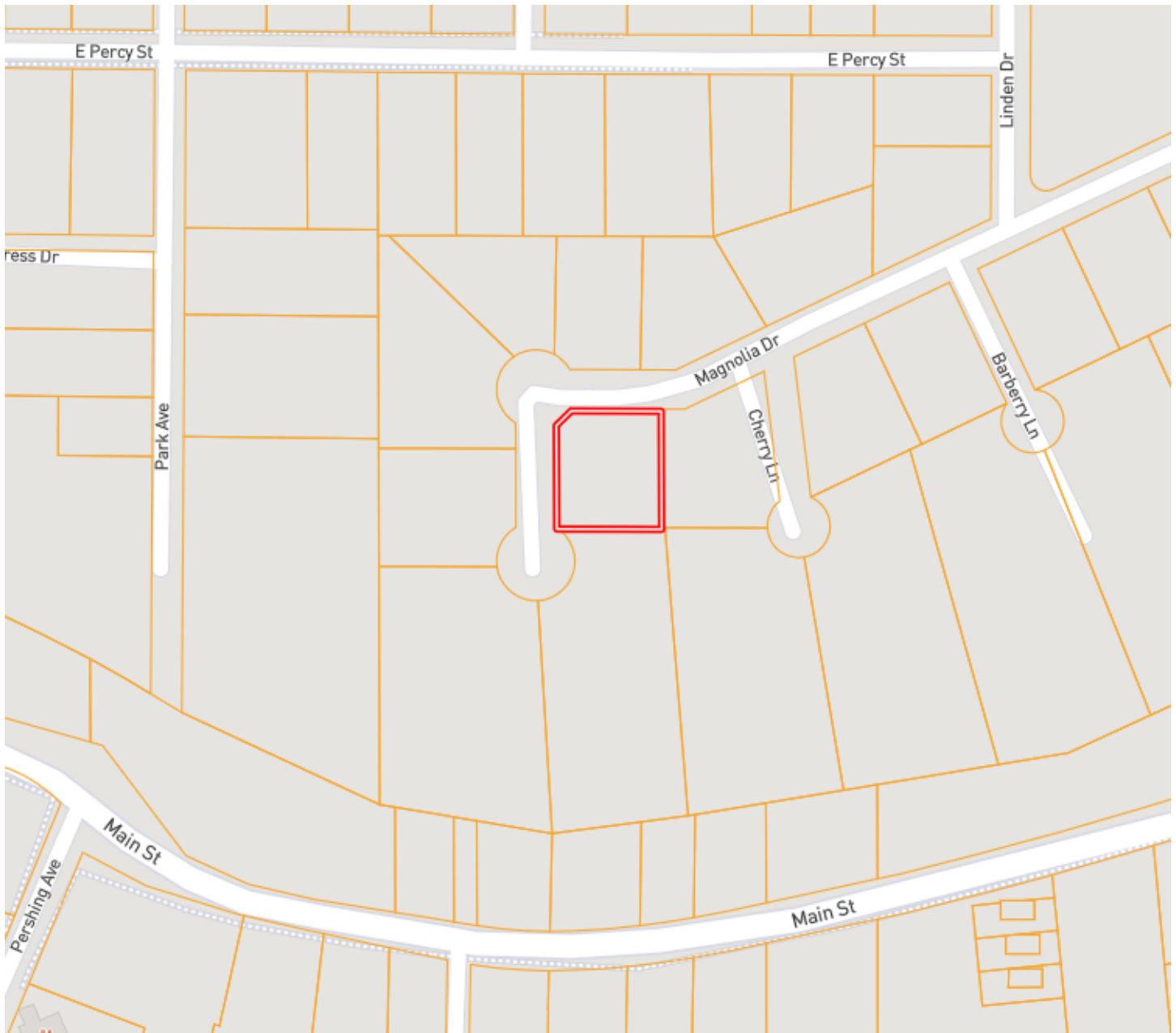


Expect More. Get More.



Information is believed to be accurate but not guaranteed.

OWNERSHIP MAP



A Real Estate Expert
You Can Trust!

EMERSON LOVELACE
REALTOR®

O: 662.441.2500 C: 601.715.3302

Emerson@TomSmithLand.com

TomSmithLandandHomes.com

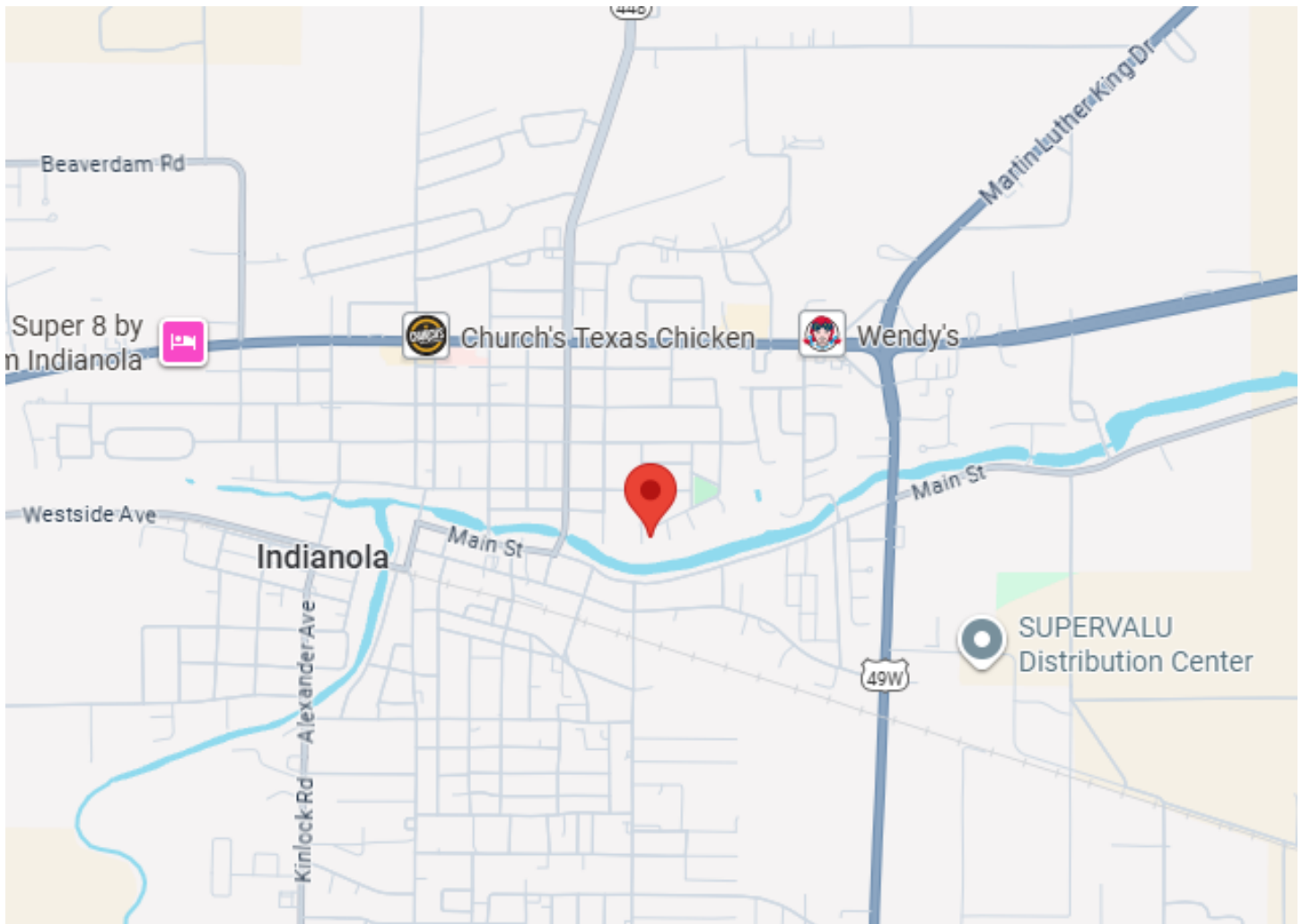


Expect More. Get More.



Information is believed to be accurate but not guaranteed.

DIRECTIONAL MAP



602 Magnolia Dr. Indianola, MS 38751

Directions from the intersection of Hwy 49 and Hwy 82 Indianola, MS: Travel West on Hwy 82 for approximately 0.2 miles, then turn left onto Seymour Dr. Turn right onto Azalea Dr. in 0.1 miles, turn right on E. Parkway Dr. in 0.1 miles, in 453 ft turn right onto Chapman St. then turn left at the 1st cross street onto Willow Dr. in 0.1 miles continue on to Magnolia Dr. and in 0.2 miles the destination will be on the left. [Click for Google Map.](#)

A Real Estate Expert
You Can Trust!

EMERSON LOVELACE

REALTOR®

O: 662.441.2500 C: 601.715.3302

Emerson@TomSmithLand.com

TomSmithLandandHomes.com



Expect More. Get More.



Information is believed to be accurate but not guaranteed.