

3-Bed, 1.5-Bath Home on a Corner Lot

701 Ninth Ave., Cleveland, MS 38732 | \$176,500



This move-in ready home in Cleveland, Bolivar County, MS, has 3 bedrooms and 1.5 bathrooms, and is situated on a .3± acre corner lot. The 1,537± SF home offers plenty of space for entertaining with a living room, den, and formal dining room. Enjoy evenings in the fenced backyard, perfect for kids, pets and gatherings. Call Callie Towles today for more details and to schedule your private showing!



**CALLIE
TOWLES**

REALTOR®

Office: 662.441.2500

Cell: 662.721.3474

Callie@TomSmithLand.com



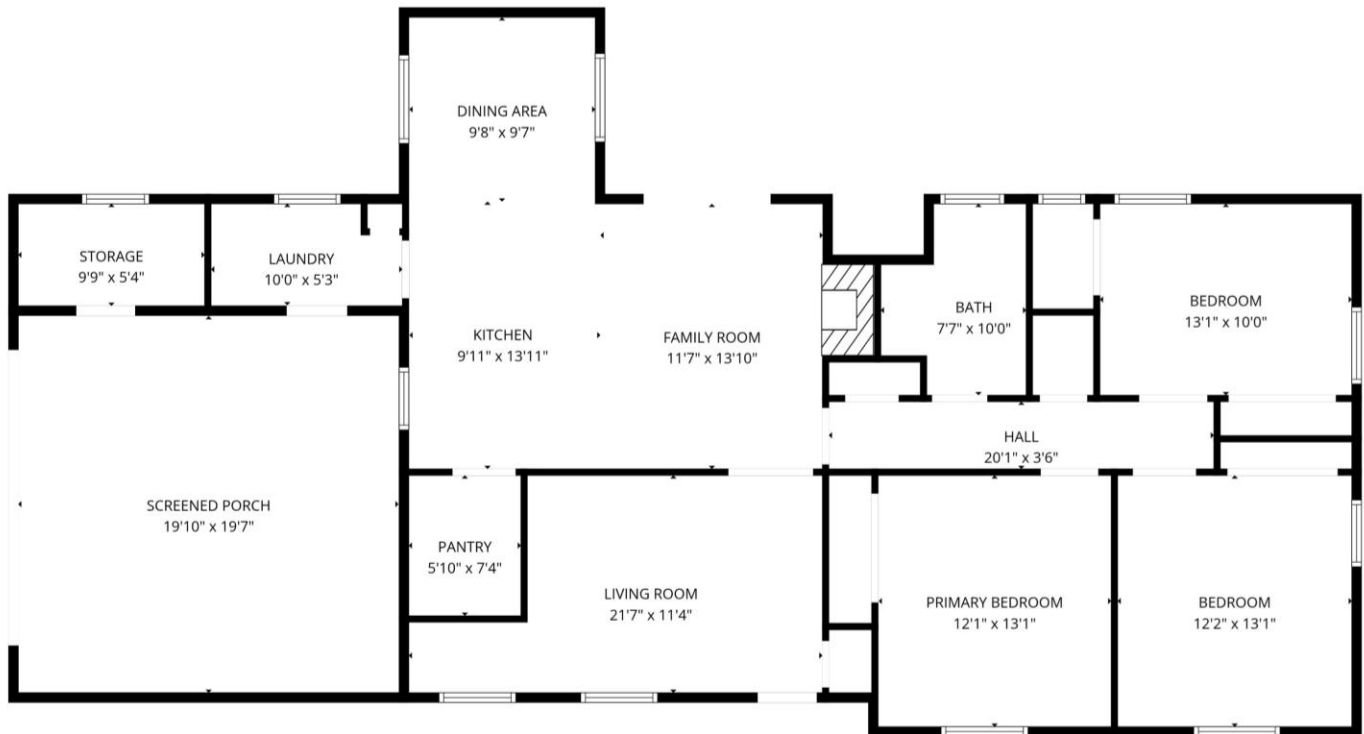
Expect More. Get More.

A Real Estate Expert You Can Trust

TomSmithLandandHomes.com

Information is believed to be accurate but not guaranteed.





FLOOR PLAN CREATED BY CUBICASA APP. MEASUREMENTS DEEMED HIGHLY RELIABLE BUT NOT GUARANTEED.

A Real Estate Expert You Can Trust!

CALLIE TOWLES
REALTOR®

O: 662.441.2500 C: 662.721.3474

Callie@TomSmithLand.com

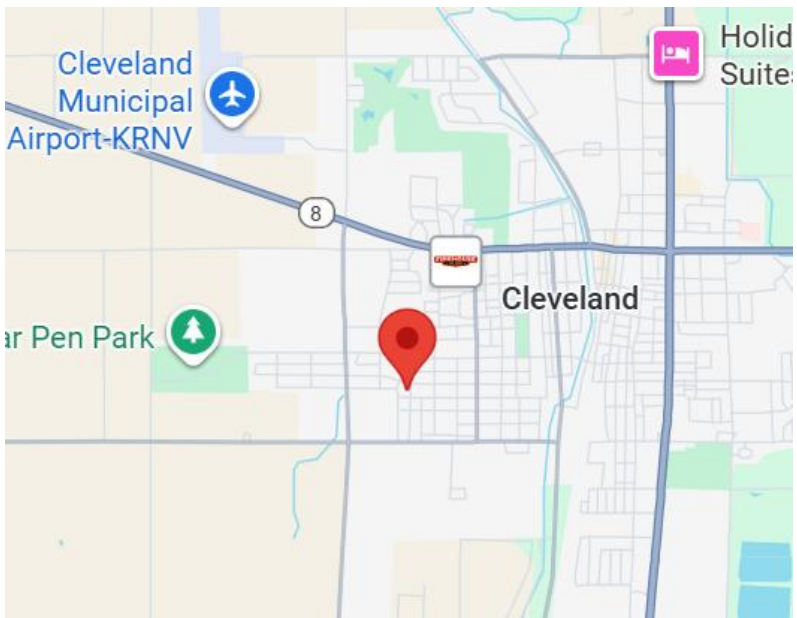
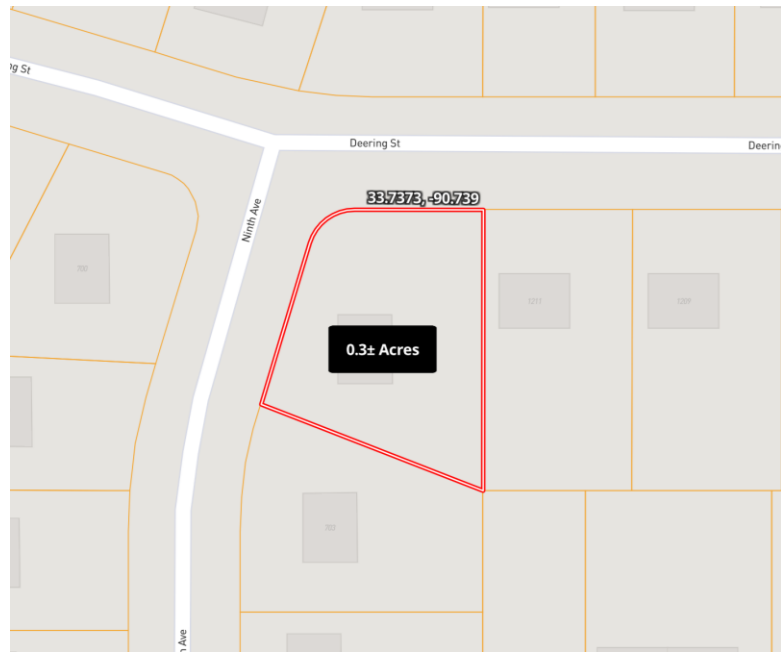
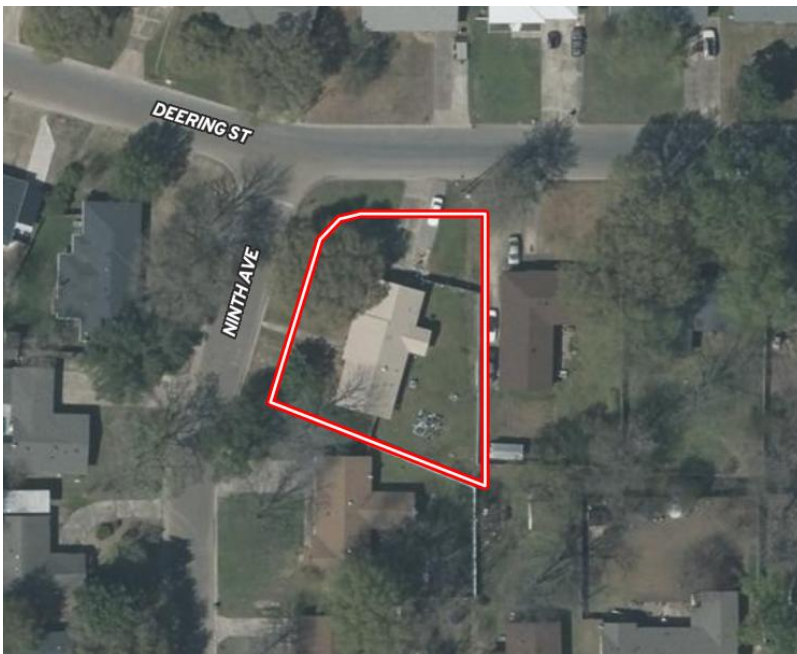
TomSmithLandandHomes.com



Expect More. Get More.



Information is believed to be accurate but not guaranteed.



Directions from Hwy 8 & Hwy 61 in Cleveland, MS:

Travel west on Hwy 8 for 1 mile, then turn left onto N. Fifth Avenue. In 0.7 miles, turn right onto Deering Street. Turn left onto Ninth Avenue, and the home will be on the left in 92 feet.

**Address: 701 Ninth Avenue,
Cleveland, MS 38732**

[Google Maps](#) [Link](#)



**CALLIE
TOWLES**
REALTOR®

Office: 662.441.2500

Cell: 662.721.3474

Callie@TomSmithLand.com



Expect More. Get More.

A Real Estate Expert You Can Trust

TomSmithLandandHomes.com