

Updated 3-Bed, 2-Bath Home on a Corner Lot

700 Ninth Ave., Cleveland, MS 38732 | \$279,750



This spacious 3-bedroom, 2-bathroom home was completely remodeled approximately 2 years ago, and is situated on a 0.22± acre corner lot in Cleveland, Bolivar County, MS. The home features two living areas, with the rear den having a gas fireplace. The home has ample storage through various built-in cabinets, large closets, and a mud room off the 2-car garage. In the kitchen, there is ample counter space, storage, and shelving to display dishes. The primary bedroom offers his and hers closets and an en-suite bathroom. Call Tracey Bell or Abby Abernathy today for more details and to schedule your private showing!



TRACEY BELL
MANAGING BROKER

O: 662.441.2500 | C: 662.719.4720
Tracey@TomSmithLand.com



ABBY ABERNATHY
REALTOR®

O: 662.441.2500 | C: 940.781.3137
Abby@TomSmithLand.com

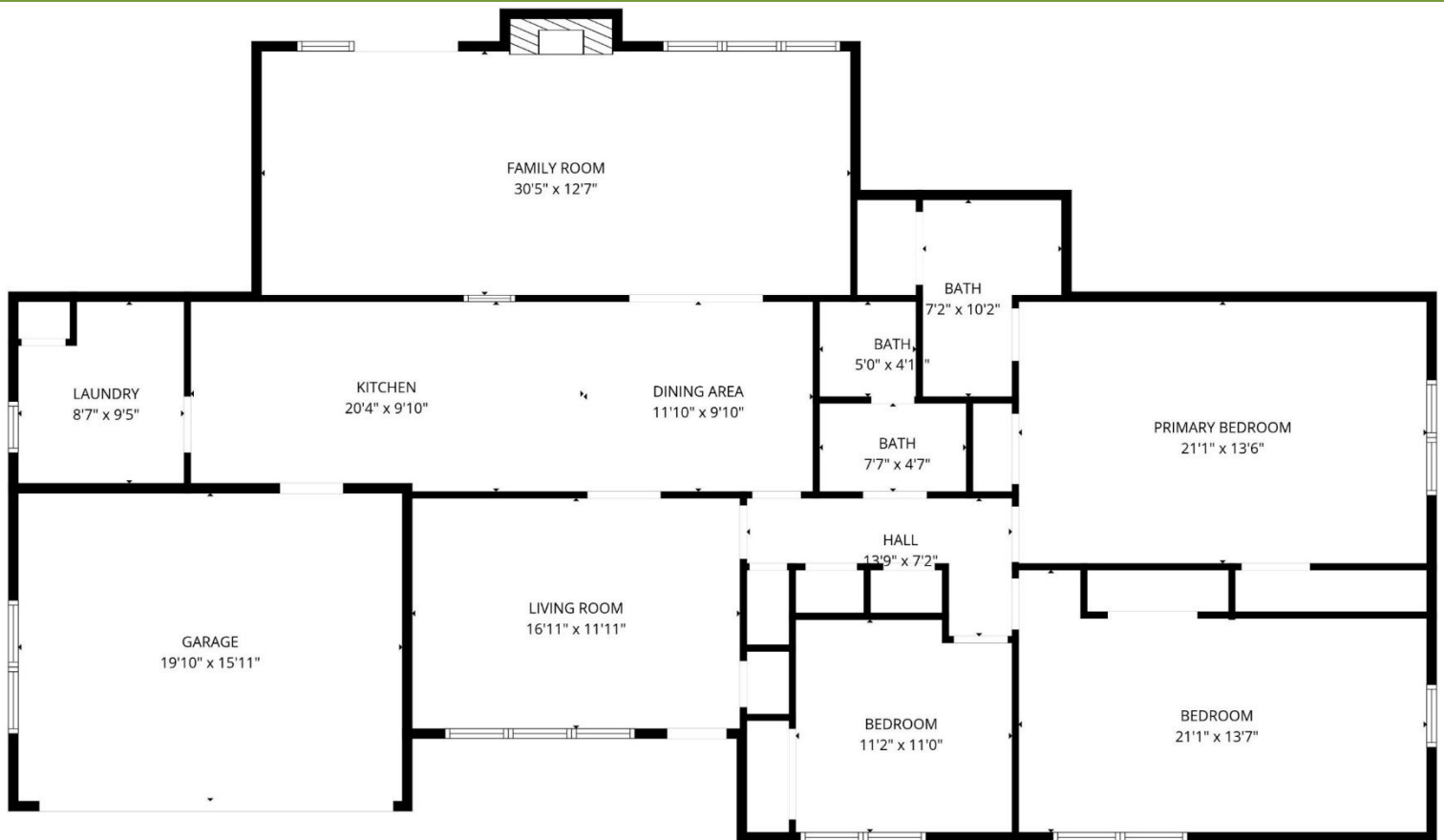
TomSmithLandandHomes.com

Information is believed to be accurate but not guaranteed





- 2,094± SF
- 3 Bedrooms
- 2 Full Bathrooms
- Year Built: 1963
- Gas Fireplace
- All Appliances to Remain
- 2-Car Garage
- Corner Lot
- Fenced-in Backyard



TRACEY BELL
MANAGING BROKER

O: 662.441.2500 | C: 662.719.4720

Tracey@TomSmithLand.com



ABBY ABERNATHY
REALTOR®

O: 662.441.2500 | C: 940.781.3137

Abby@TomSmithLand.com

TomSmithLandandHomes.com

Information is believed to be accurate but not guaranteed.





TRACEY BELL
MANAGING BROKER

O: 662.441.2500 | C: 662.719.4720
Tracey@TomSmithLand.com



ABBY ABERNATHY
REALTOR®

O: 662.441.2500 | C: 940.781.3137
Abby@TomSmithLand.com

TomSmithLandandHomes.com





TRACEY BELL
MANAGING BROKER

O: 662.441.2500 | C: 662.719.4720

Tracey@TomSmithLand.com



ABBY ABERNATHY
REALTOR®

O: 662.441.2500 | C: 940.781.3137

Abby@TomSmithLand.com

TomSmithLandandHomes.com

Information is believed to be accurate but not guaranteed.





TRACEY BELL
MANAGING BROKER

O: 662.441.2500 | C: 662.719.4720

Tracey@TomSmithLand.com

ABBY ABERNATHY
REALTOR®

O: 662.441.2500 | C: 940.781.3137

Abby@TomSmithLand.com

TomSmithLandandHomes.com

Information is believed to be accurate but not guaranteed.





TRACEY BELL
MANAGING BROKER

O: 662.441.2500 | C: 662.719.4720

Tracey@TomSmithLand.com



ABBY ABERNATHY
REALTOR®

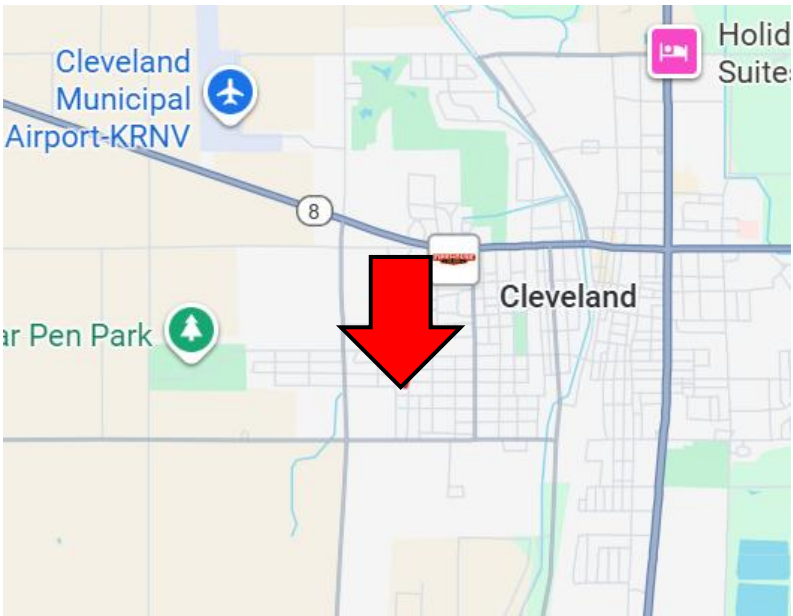
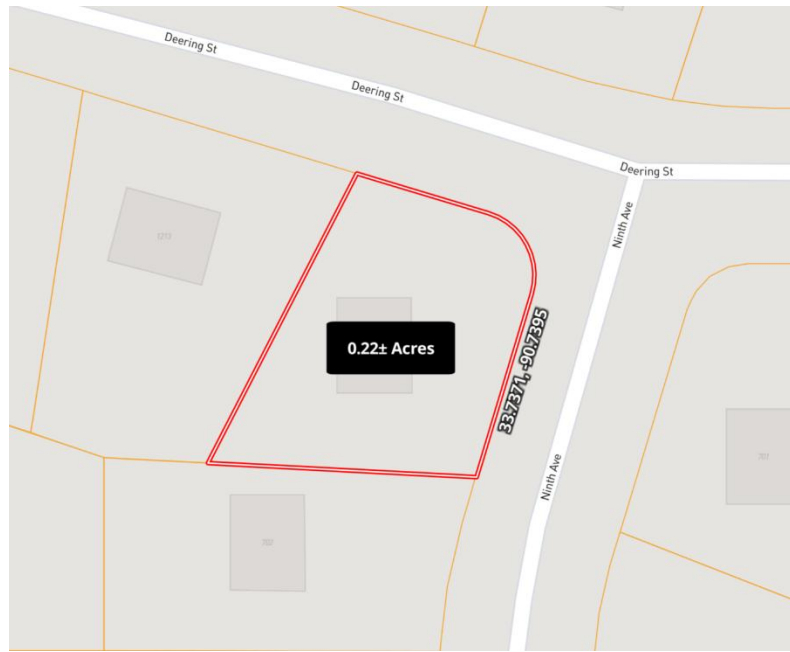
O: 662.441.2500 | C: 940.781.3137

Abby@TomSmithLand.com

TomSmithLandandHomes.com

Information is believed to be accurate but not guaranteed.





Directions from Hwy 8 & Hwy 61 in Cleveland, MS:

Travel west on Hwy 8 for 1 mile, then turn left onto N. Fifth Avenue. In 0.7 miles, turn right onto Deering Street. Turn left onto Ninth Avenue, and the home will be on the right in 92 feet.

Address: 700 Ninth Avenue, Cleveland, MS 38732

[Google Maps Link](#)



TRACEY BELL
MANAGING BROKER

O: 662.441.2500 | C: 662.719.4720
Tracey@TomSmithLand.com



Expect More. Get More.



ABBY ABERNATHY
REALTOR®

O: 662.441.2500 | C: 940.781.3137
Abby@TomSmithLand.com