

Classic Six Bedroom Home

407 East Percy St. Indianola, MS 38751



\$225,000

- 6 Bedrooms, 4 Bathrooms
- 4,398 +/- Square Feet
- Covered Front Porch
- 2 Gas Fireplaces
- Original Hardwood Floors
- Large Rooms
- Vaulted Ceilings
- Sunroom
- 600 +/- Square Foot Pool
- 2 Bedroom, 1 Bathroom Guest House

**EMERSON
LOVELACE**

REALTOR®

Office: 662.441.2500

Cell: 601.715.3302

Emerson@TomSmithLand.com



Expect More. Get More.



A Real Estate Expert You Can Trust

TomSmithLandandHomes.com

Information is believed to be accurate but not guaranteed.



Discover Southern elegance in this beautifully maintained historic home located on a spacious ±0.44-acre corner lot in the desirable historic district of Indianola, Mississippi. Nestled in the heart of the Delta, this classic Sunflower County residence blends original charm with thoughtful modern updates.

With over ±4,398 square feet of living space, the main home features six generously sized bedrooms and four full bathrooms—perfect for a large family or those who love to host. Enjoy the warm Delta climate from the covered front porch or unwind in the split-level living room, ideal for entertaining. The home's rich character shines through vaulted ceilings, timeless woodwork, original hardwood floors, and two gas fireplaces—both of which can be converted back to wood-burning if desired.

Just steps from the main residence, a two-bedroom, one-bath guest house offers privacy and flexibility. Connected by a cozy sunroom, the guest space includes a large open area and kitchenette, making it ideal for visitors or extended family. Call Emerson today for a private showing!



A Real Estate Expert
You Can Trust!

EMERSON LOVELACE
REALTOR®

O: 662.441.2500 C: 601.715.3302

Emerson@TomSmithLand.com

TomSmithLandandHomes.com

**Tom
Smith
LAND AND
HOMES**

Expect More. Get More.

2011-2025
BEST
BROKERAGES

Information is believed to be accurate but not guaranteed.



A Real Estate Expert You Can Trust!

EMERSON LOVELACE
REALTOR®

O: 662.441.2500 C: 601.715.3302

Emerson@TomSmithLand.com

TomSmithLandandHomes.com

**Tom
Smith
LAND AND
HOMES**

Expect More. Get More.

2011-2025
BEST
BROKERAGES

Information is believed to be accurate but not guaranteed.



A Real Estate Expert
You Can Trust!

EMERSON LOVELACE
REALTOR®

O: 662.441.2500 C: 601.715.3302

Emerson@TomSmithLand.com

TomSmithLandandHomes.com

Tom Smith
LAND AND HOMES

Expect More. Get More.

2011-2025
BEST
BROKERAGES

Information is believed to be accurate but not guaranteed.



A Real Estate Expert You Can Trust!

EMERSON LOVELACE
REALTOR®

O: 662.441.2500 C: 601.715.3302

Emerson@TomSmithLand.com

TomSmithLandandHomes.com

**Tom
Smith
LAND AND
HOMES**

Expect More. Get More.

2011-2025
BEST
BROKERAGES

Information is believed to be accurate but not guaranteed.



A Real Estate Expert
You Can Trust!

EMERSON LOVELACE
REALTOR®

O: 662.441.2500 C: 601.715.3302

Emerson@TomSmithLand.com

TomSmithLandandHomes.com

**Tom
Smith
LAND AND
HOMES**

Expect More. Get More.

2011-2025
BEST
BROKERAGES

Information is believed to be accurate but not guaranteed.

Aerial Map



[Click for Interactive Map](#)

A Real Estate Expert
You Can Trust!

EMERSON LOVELACE
REALTOR®

O: 662.441.2500 C: 601.715.3302

Emerson@TomSmithLand.com

TomSmithLandandHomes.com

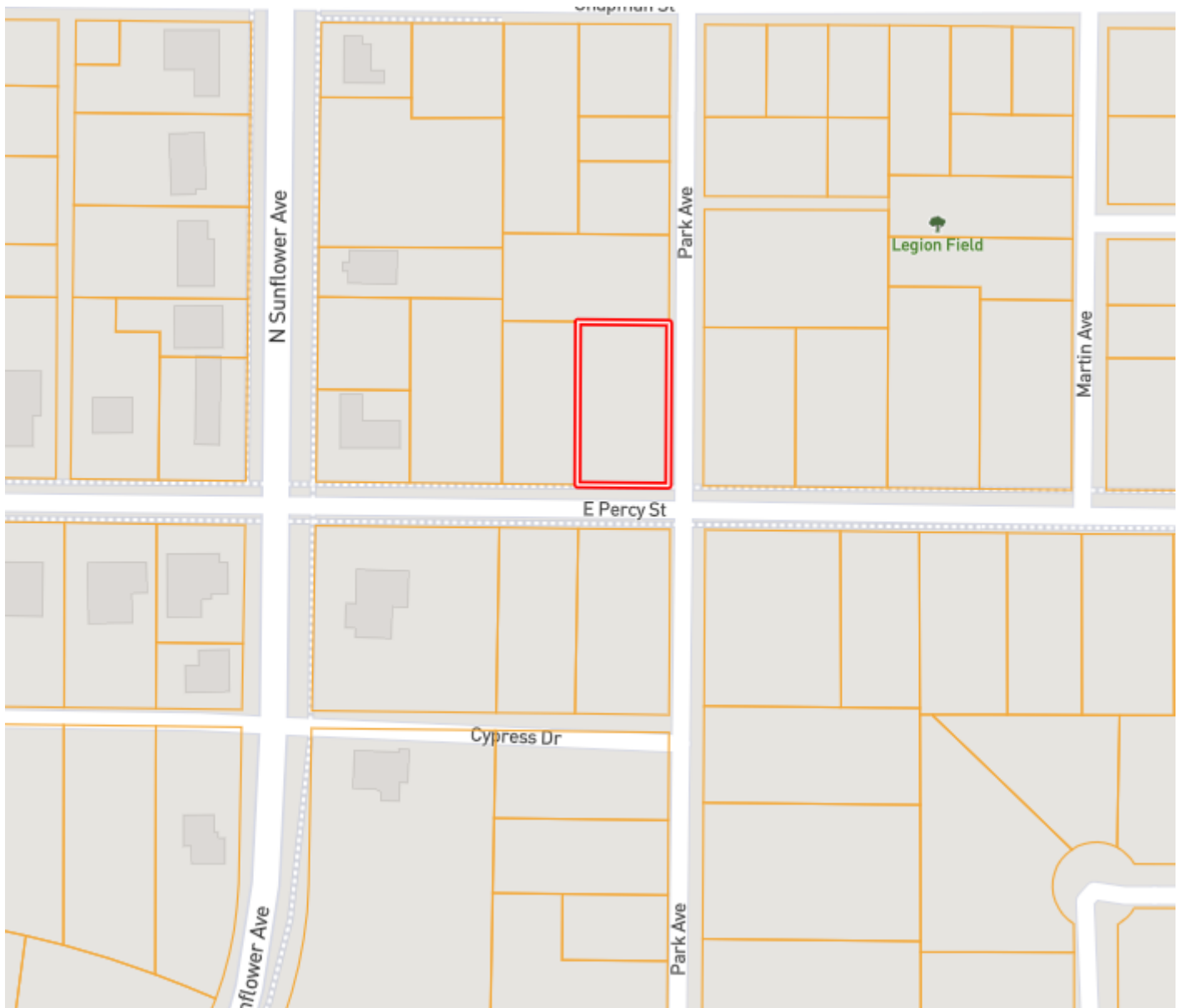


Expect More. Get More.



Information is believed to be accurate but not guaranteed.

Ownership Map



A Real Estate Expert
You Can Trust!

EMERSON LOVELACE
REALTOR®

O: 662.441.2500 C: 601.715.3302

Emerson@TomSmithLand.com

TomSmithLandandHomes.com

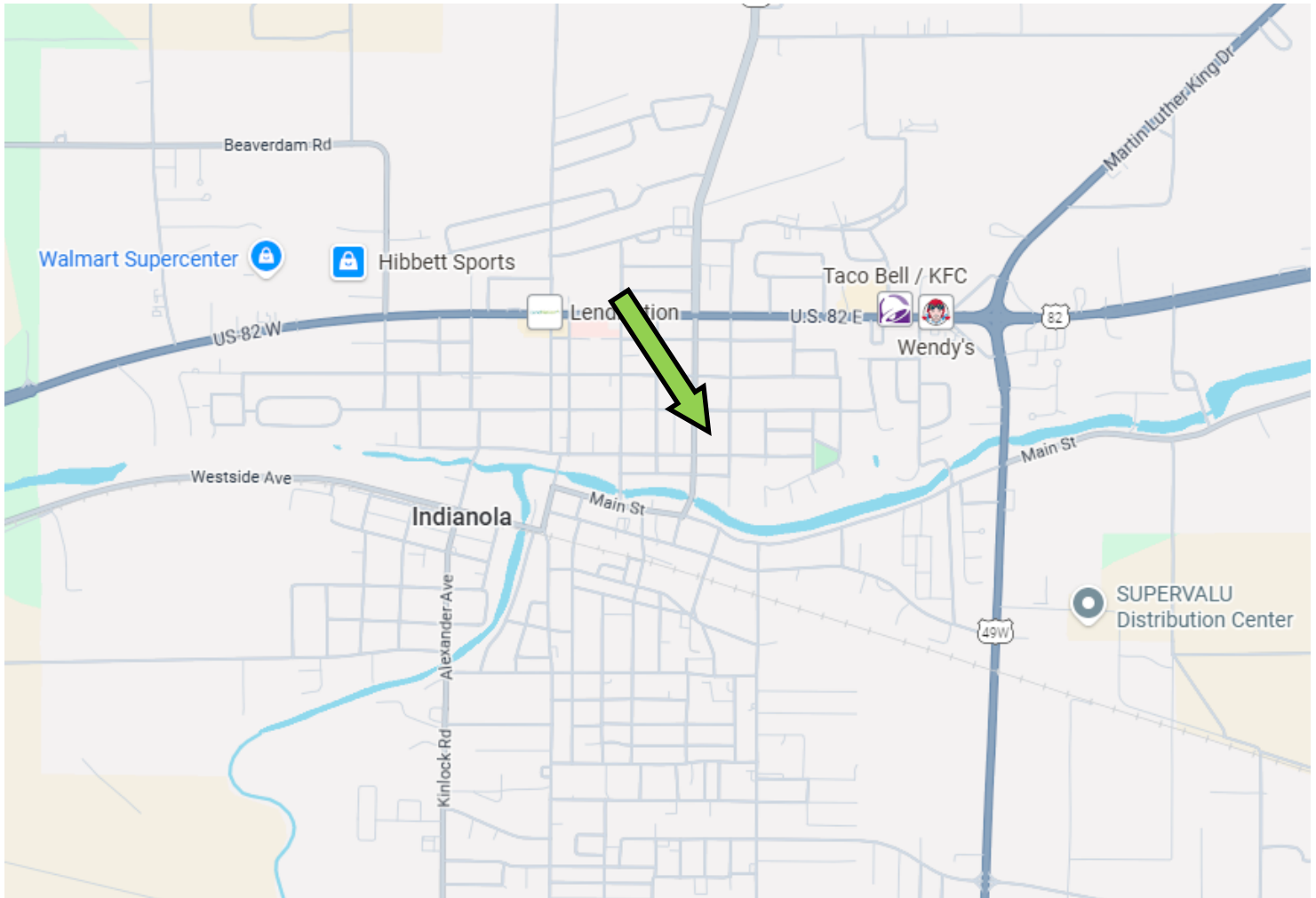


Expect More. Get More.



Information is believed to be accurate but not guaranteed.

Directional Map



Address: 407 East Percy St. Indianola, MS 38751

Directions from the intersection of Hwy 49 and Hwy 82 in Indianola, MS: Travel West on Hwy 82 for approximately 0.7 miles. Turn left onto N. Sunflower Ave, in 0.3 miles turn left onto East Percy Street and in 387 ft the house will be on the left. [Click for Google Maps.](#)

A Real Estate Expert
You Can Trust!

EMERSON LOVELACE
REALTOR®

O: 662.441.2500 C: 601.715.3302

Emerson@TomSmithLand.com

TomSmithLandandHomes.com



Expect More. Get More.



Information is believed to be accurate but not guaranteed.