

1511 Deering St., Cleveland, Bolivar County, MS | \$290,000

Located in a highly desirable neighborhood near Bear Pen Park, this spacious 3-bedroom, 2-bathroom home offers 2,416± SF of thoughtfully designed living space. The updated kitchen features stylish cabinetry, modern flooring, stainless steel appliances, and a convenient island—perfect for cooking and gathering. The open layout flows seamlessly into the dining and living areas, creating an inviting atmosphere for everyday living or entertaining. The private primary suite is complete with a walk-in closet, double vanity, a soaking tub, and a separate stand-alone shower. Step outside to enjoy a fully fenced backyard with a concrete patio just off the kitchen and dining area—ideal for outdoor dining, entertaining, or relaxing in your own private oasis. Don't miss your chance to own this beautiful home, and call Tracey Bell today to schedule your private showing!



**TRACEY
BELL**

MANAGING BROKER

Office: 662.441.2500

Cell: 662.719.4720

Tracey@TomSmithLand.com



Expect More. Get More.

A Real Estate Expert You Can Trust

TomSmithLandandHomes.com

Information is believed to be accurate but not guaranteed.





A Real Estate Expert
You Can Trust!

TRACEY BELL

MANAGING BROKER

O: 662.441.2500 C: 662.719.4720

Tracey@TomSmithLand.com

TomSmithLandandHomes.com

**Tom
Smith
LAND AND
HOMES**

Expect More. Get More.

2011-2024
NATIONAL
BEST
BROKERAGES

Information is believed to be accurate but not guaranteed.



A Real Estate Expert
You Can Trust!

TRACEY BELL

MANAGING BROKER

O: 662.441.2500 C: 662.719.4720

Tracey@TomSmithLand.com

TomSmithLandandHomes.com

**Tom
Smith
LAND AND
HOMES**

Expect More. Get More.

2011-2024
NATIONAL
BEST
BROKERAGES

Information is believed to be accurate but not guaranteed.



TOTAL: 2246 sq. ft

FLOOR 1: 2246 sq. ft

EXCLUDED AREAS: GARAGE: 498 sq. ft, UNDEFINED: 30 sq. ft, UTILITY: 21 sq. ft,
WALLS: 166 sq. ft

Floor Plan Created By Cubicasa App. Measurements Deemed Highly Reliable But Not Guaranteed.

A Real Estate Expert
You Can Trust!

TRACEY BELL

MANAGING BROKER

O: 662.441.2500 C: 662.719.4720

Tracey@TomSmithLand.com

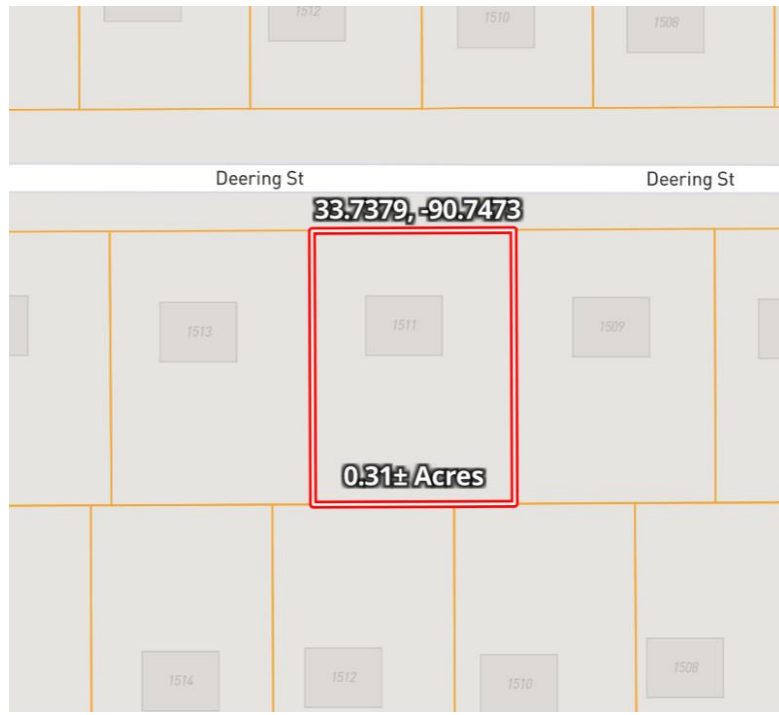
TomSmithLandandHomes.com

**Tom
Smith
LAND AND
HOMES**

Expect More. Get More.

2011-2024
BEST
BROKERAGES

Information is believed to be accurate but not guaranteed.



Directions from Hwy 8 & Hwy 61 in Cleveland:

Travel west on HWY 8 for 1.7 miles. Turn left onto Bishop Road and travel 0.8 miles. Turn right onto Deering Street, and the property will be on the left in 0.1 miles.

Address: 1511 Deering Street, Cleveland, MS 38732

[Google Maps Link](#)



**TRACEY
BELL**

MANAGING BROKER

Office: 662.441.2500

Cell: 662.719.4720

Tracey@TomSmithLand.com



Expect More. Get More.

A Real Estate Expert You Can Trust

TomSmithLandandHomes.com

Information is believed to be accurate but not guaranteed.

