

HOMESITE | HUNTING | TIMBER

88± Acres in Oktibbeha County, MS



\$370,020

This 88± acre property features mostly pine timber with a touch of hardwoods, and it borders the scenic Six-Mile Creek along its northern edge. Sitting on top of a ridge, it offers the perfect spot for a cabin or homesite with beautiful views. The land includes a well-maintained road system and multiple areas ideal for food plots. It's a great setup for high-quality turkey and deer hunting. With road frontage on Maben-Bell Schoolhouse Road and a gated entrance, access is easy and secure. Conveniently located just 15 miles from Starkville, this property offers a quiet retreat without being too far from town. Call Landen Rogers today to see it yourself!



**LANDEN
ROGERS**
REALTOR®

Office: 662.268.6333

Cell: 662.418.4604

Landen@TomSmithLand.com



Expect More. Get More.

A Real Estate Expert You Can Trust

TomSmithLandandHomes.com

Information is believed to be accurate but not guaranteed.





A Real Estate Expert
You Can Trust!

LANDEN ROGERS
REALTOR®

O: 662.268.6333 C: 662.418.4604

Landen@TomSmithLand.com

TomSmithLandandHomes.com

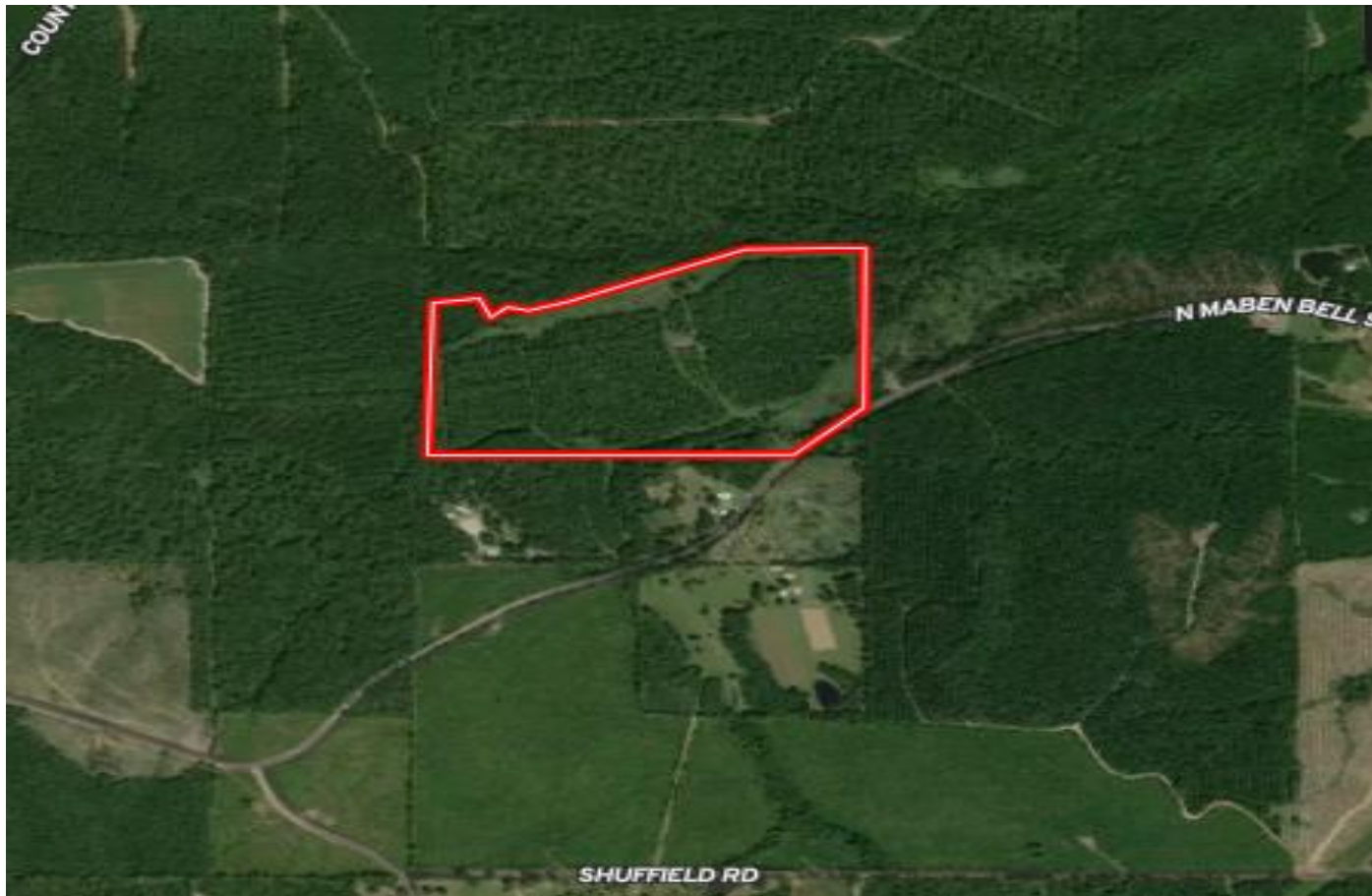


Expect More. Get More.

Information is believed to be accurate but not guaranteed.



AERIAL MAP



[Click Here for Interactive Map](#)

A Real Estate Expert
You Can Trust!

LANDEN ROGERS
REALTOR®

O: 662.268.6333 C: 662.418.4604

Landen@TomSmithLand.com

TomSmithLandandHomes.com

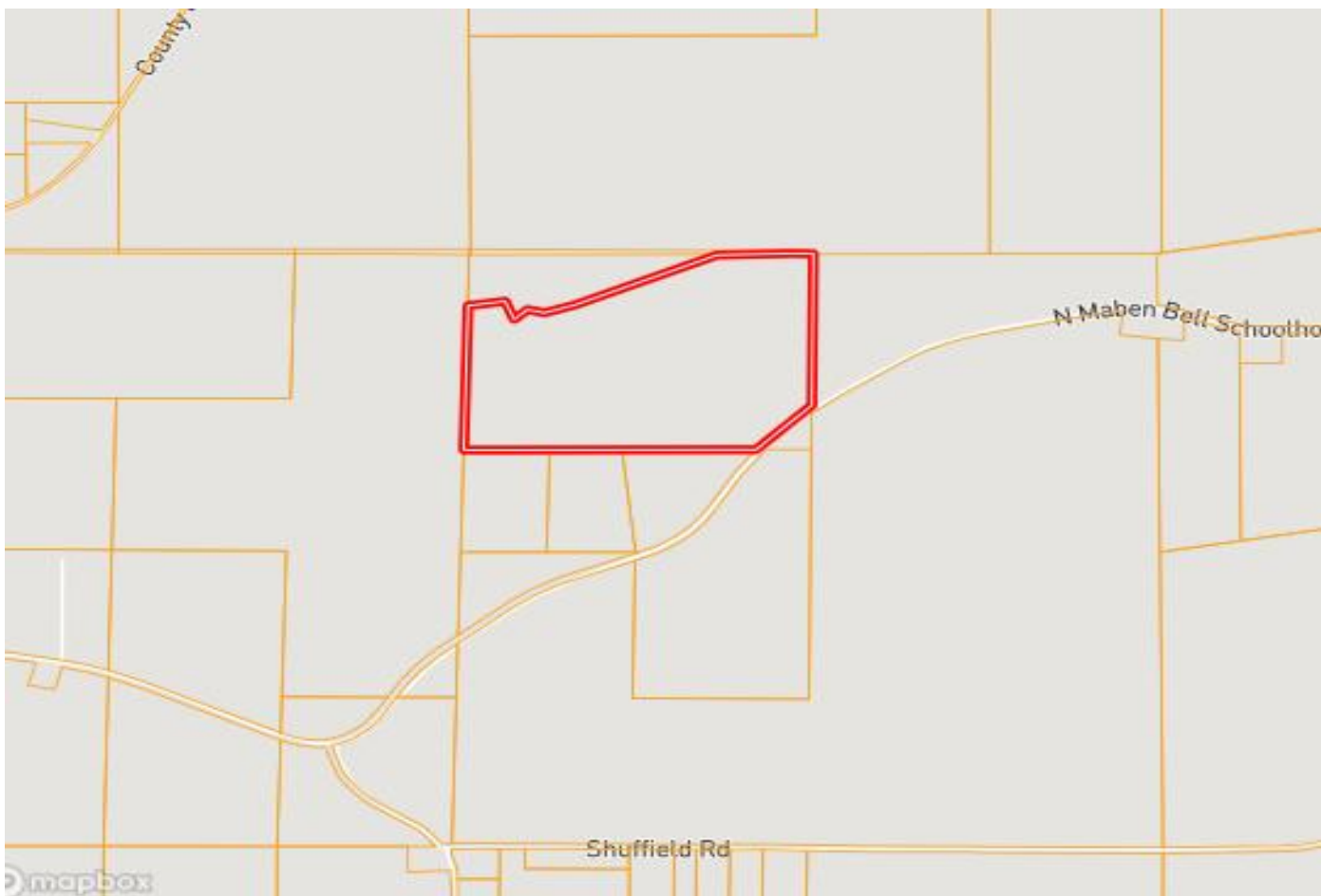


Expect More. Get More.



Information is believed to be accurate but not guaranteed.

OWNERSHIP MAP



A Real Estate Expert
You Can Trust!

LANDEN ROGERS

REALTOR®

O: 662.268.6333 C: 662.418.4604

Landen@TomSmithLand.com

TomSmithLandandHomes.com

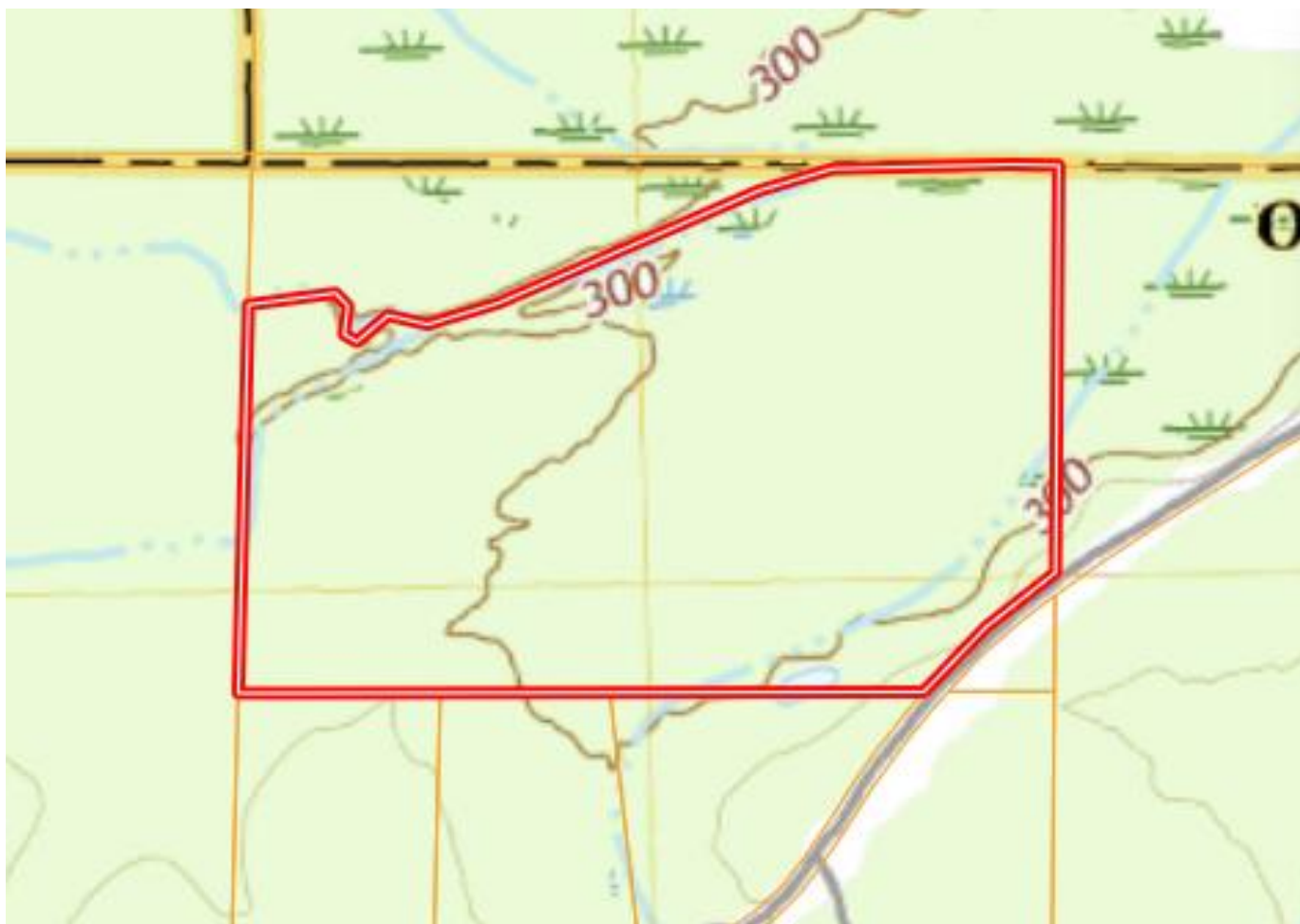


Expect More. Get More.



Information is believed to be accurate but not guaranteed.

TOPOGRAPHY MAP



A Real Estate Expert
You Can Trust!

LANDEN ROGERS
REALTOR®

O: 662.268.6333 C: 662.418.4604

Landen@TomSmithLand.com

TomSmithLandandHomes.com

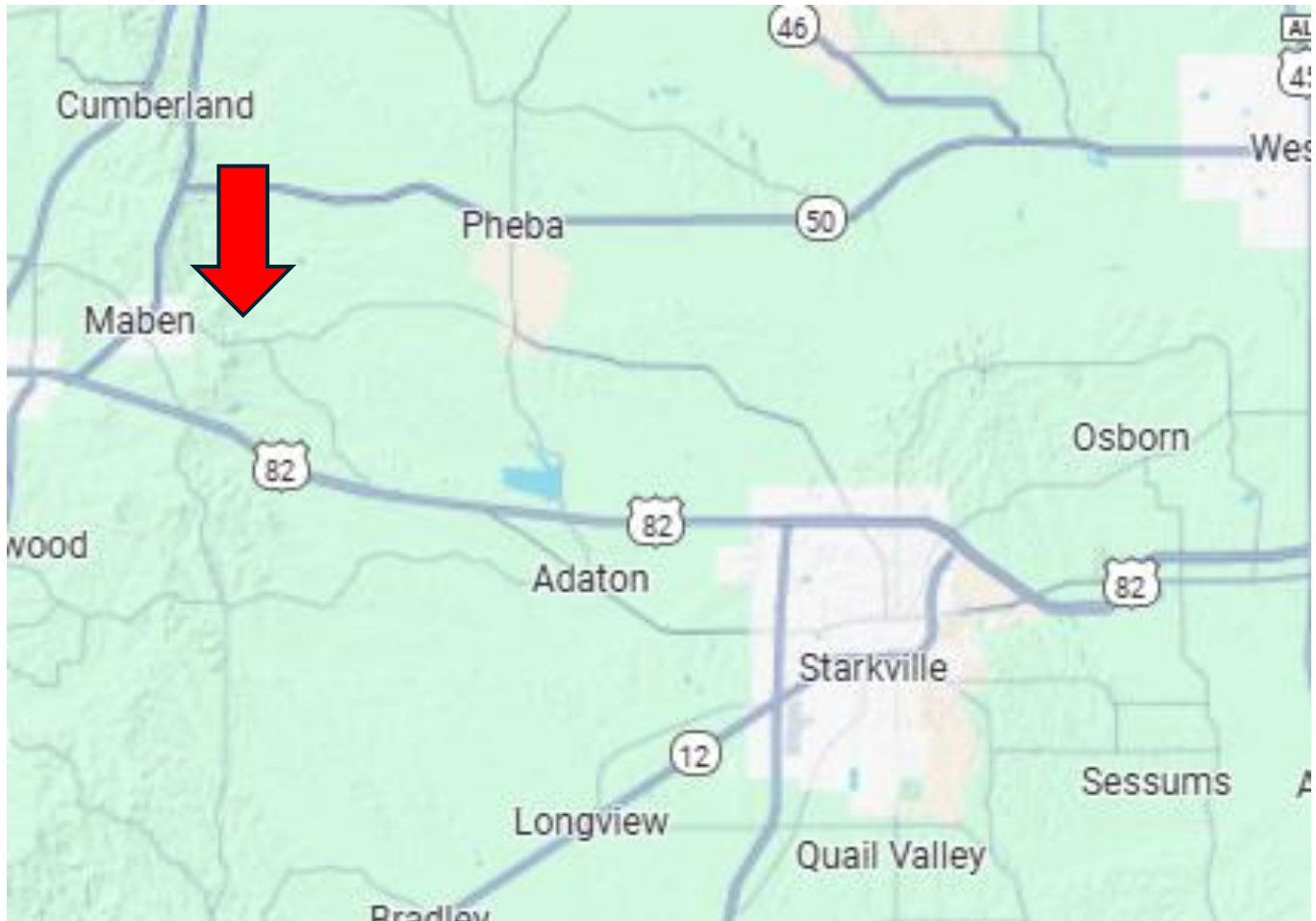


Expect More. Get More.



Information is believed to be accurate but not guaranteed.

DIRECTIONAL MAP



Directions from HWY 82 West in Starkville, MS: Head northwest on MS-389 N/N Jackson St 9.0 mi Turn left onto N Maben Bell Schoolhouse Rd , Destination will be on the right. [Google Map Link](#)

A Real Estate Expert
You Can Trust!

LANDEN ROGERS
REALTOR®

O: 662.268.6333 C: 662.418.4604

Landen@TomSmithLand.com

TomSmithLandandHomes.com



Expect More. Get More.



Information is believed to be accurate but not guaranteed.