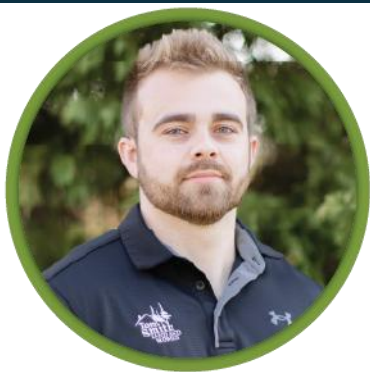


HUNTING & RECREATION

Monroe County, MS

26.7± ACRES | \$77,500

Are you looking for a small hunting tract or just a place to get away? This 26.7± acres in Monroe County is what you have been looking for. It's located in Smithville, MS and is ready for its next owner. The property features one centralized food plot with a shooting house and is surrounded by five- to eight-year-old natural regeneration timber. There is a small ditch running through the property that has mature hardwoods surrounding it. If you're looking for a good hunting tract, give 26.7± Monroe a look.! Call Walker or Tyler for your private showing today!



WALKER TRANUM
MANAGING BROKER

O: 662.268.6333 | C: 662.769.1442
Walker@TomSmithHomes.com



Expect More. Get More.



TYLER KILGORE
REALTOR®

O: 662.268.6333 | C: 601.562.0688
Tyler@TomSmithLand.com

TomSmithLandandHomes.com

Information is believed to be accurate but not guaranteed.





WALKER TRANUM
MANAGING BROKER

O: 662.268.6333 | C: 662.769.1442
Walker@TomSmithHomes.com

TYLER KILGORE
REALTOR®

O: 662.268.6333 | C: 601.562.0688
Tyler@TomSmithLand.com

TomSmithLandandHomes.com

Information is believed to be accurate but not guaranteed.



Aerial Map



land id. [Click Here for Interactive Map](#)



WALKER TRANUM
MANAGING BROKER

O: 662.268.6333 | C: 662.769.1442
Walker@TomSmithHomes.com

TYLER KILGORE
REALTOR®

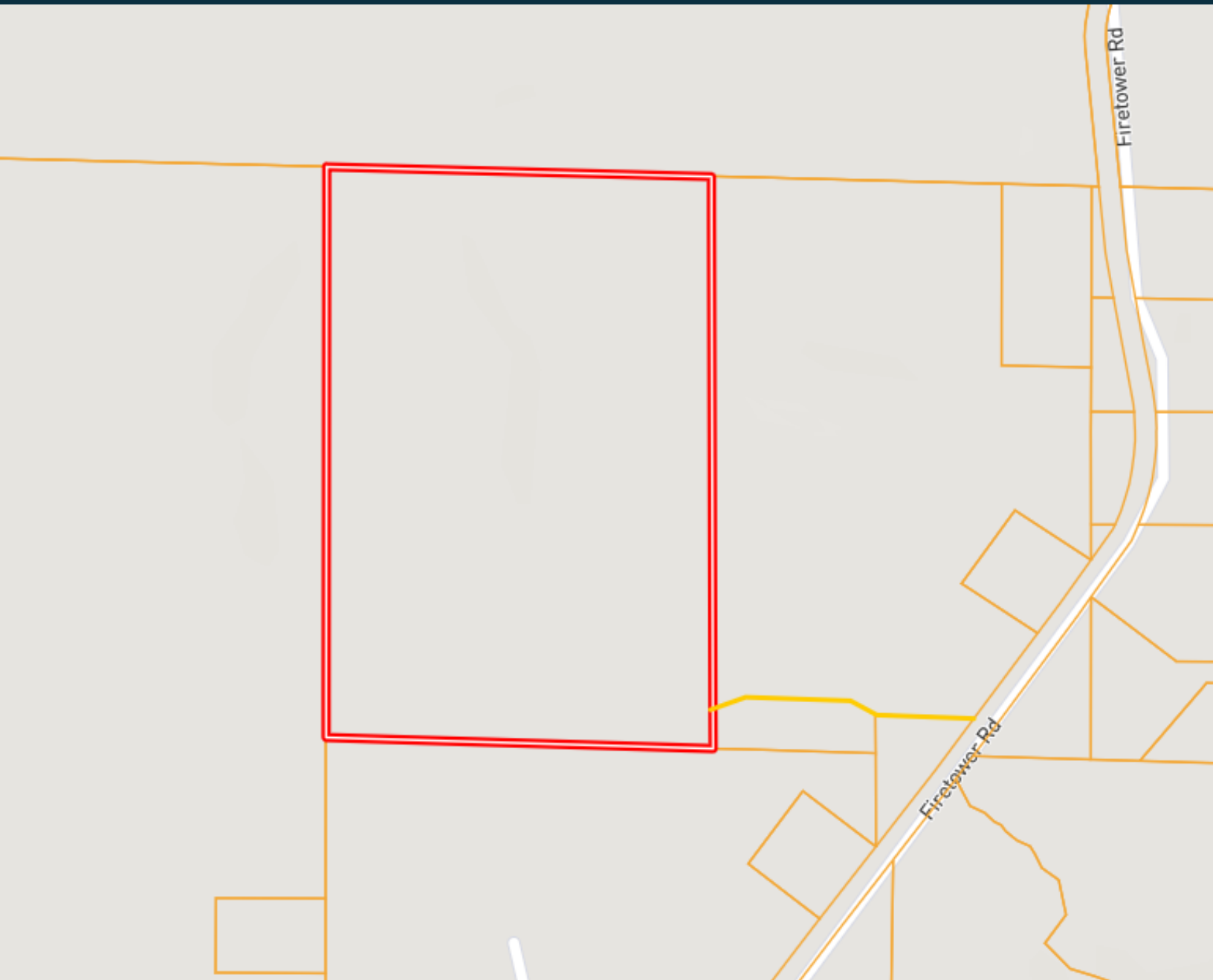
O: 662.268.6333 | C: 601.562.0688
Tyler@TomSmithLand.com

TomSmithLandandHomes.com

Information is believed to be accurate but not guaranteed.



Ownership Map



WALKER TRANUM
MANAGING BROKER

O: 662.268.6333 | C: 662.769.1442
Walker@TomSmithHomes.com



TYLER KILGORE
REALTOR®

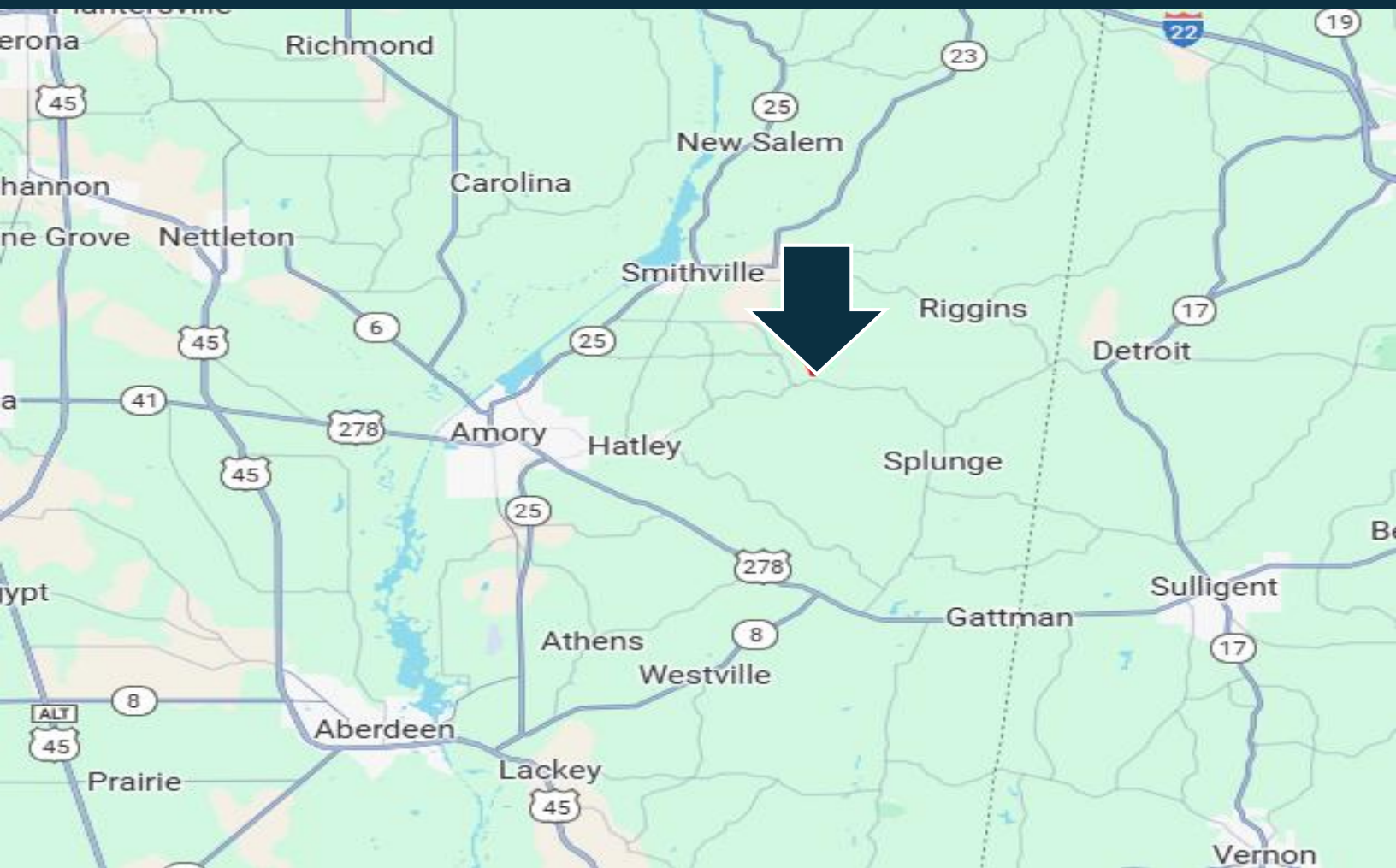
O: 662.268.6333 | C: 601.562.0688
Tyler@TomSmithLand.com

TomSmithLandandHomes.com

Information is believed to be accurate but not guaranteed.



Directional Map



Directions from Smithville, MS: Take Smithville Road to Iron Bridge Road for .3 miles. Then take Wright Road to Parham Store Road for 2.3 miles. After that, continue on Parham Store Road heading towards Firetower Road for another 4.2 miles. Then turn left on Firetower Road and the property will be on your left. [Google Map Link](#)



WALKER TRANUM
MANAGING BROKER

O: 662.268.6333 | C: 662.769.1442
Walker@TomSmithHomes.com



TYLER KILGORE
REALTOR®

O: 662.268.6333 | C: 601.562.0688
Tyler@TomSmithLand.com