

2 Lots in The Woodlands of River Trace At Union Harbor Resort in Tishomingo County, MS



Take your pick of Lots 10, 11, 15 or 17 at The Woodlands of River Trace at Union Harbor Resort in Tishomingo County, MS. These beautiful, wooded residential lots are located in a gated community with utilities and access to Pickwick Lake. Come build your dream home on one of these amazing lots! Lot 10 is 0.56 acres, Lot 11 is 0.64 acres, Lot 15 is 0.67 acres and Lot 17 is 0.60 acres. Call Tom today!!

Directions: From the intersection of Hwy 25 and Hwy 172 in Iuka, drive 1.5 miles and turn left on to Spring Street. Cross RR tracks and turn right on to Eastport Drive. Proceed 4.4 miles, turn left on CR 256 and drive for 0.5 miles. Turn right on CR 263, proceed 0.5 miles to Union Harbor and take first left on to Marina Trace Drive. Woodland Drive is the first right.

Lots will be on the right. Address is Lots 10, 11, 15 and 17 in Union Harbor Resort, Iuka, MS 38852



call me today!

TOM WISEMAN, MANAGING BROKER
TWiseman@TomSmithLand.com
662.317.0467



TomSmithLandandHomes.com

Information is believed to be accurate but not guaranteed.

Lot 18 and 32 pictures



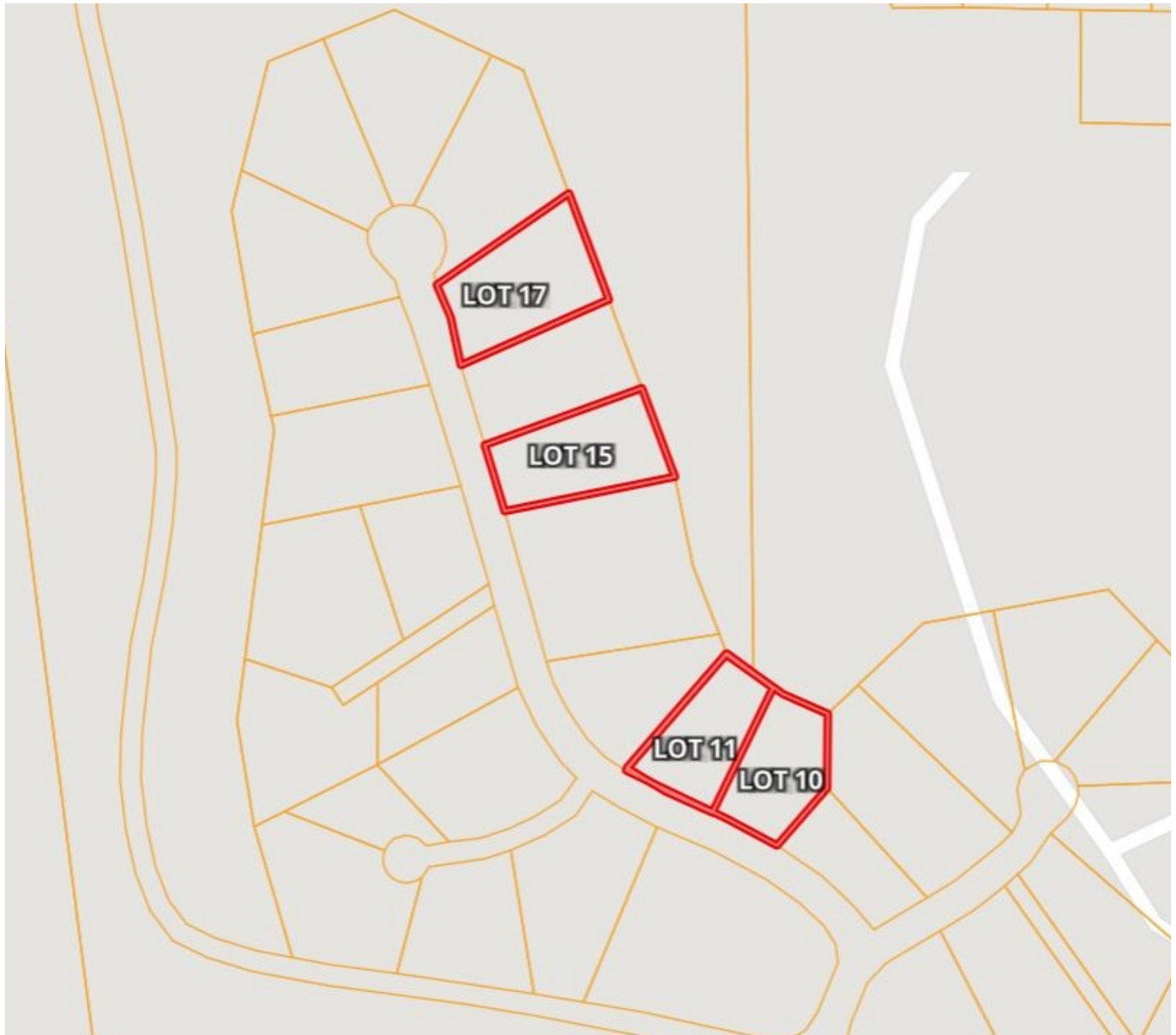
TOM WISEMAN, MANAGING BROKER
TWiseman@TomSmithLand.com
662.317.0467



TomSmithLandandHomes.com

Information is believed to be accurate but not guaranteed.

PROPERTY MAP



TOM WISEMAN, MANAGING BROKER
TWiseman@TomSmithLand.com
662.317.0467



TomSmithLandandHomes.com

Information is believed to be accurate but not guaranteed.

AERIAL MAP



Lot 10 is .56 of an acre

Lot 11 is .64 of an acre

Lot 15 is .67 of an acre

Lot 17 is .60 of an acre



TOM WISEMAN, MANAGING BROKER
TWiseman@TomSmithLand.com
662.317.0467



Expect More. Get More.

TomSmithLandandHomes.com

Information is believed to be accurate but not guaranteed.

TOPO MAP



TOM WISEMAN, MANAGING BROKER
TWiseman@TomSmithLand.com
662.317.0467



TomSmithLandandHomes.com

Information is believed to be accurate but not guaranteed.

DIRECTIONAL MAP



Directions: From the intersection of Hwy 25 and Hwy 172 in Iuka, drive 1.5 miles and turn left on to Spring Street. Cross RR tracks and turn right on to Eastport Drive. Proceed 4.4 miles, turn left on CR 256 and drive for 0.5 miles. Turn right on CR 263, proceed 0.5 miles to Union Harbor and take first left on to Marina Trace Drive. Woodland Drive is the first right. Lots will be on the right. Address is Lots 10, 11, 15 and 17 in Union Harbor Resort, Iuka, MS 38852

TOM WISEMAN, MANAGING BROKER
TWiseman@TomSmithLand.com
662.317.0467

101 Main Street West | New Albany, MS 38652



Expect More. Get More.



TomSmithLandandHomes.com

Information is believed to be accurate but not guaranteed.