

Yazoo County Hunting and Timber

203+/- ACRES IN TINSLEY, MS



- 203+/- Acres in Yazoo County
- Mature Hardwoods
- Outstanding Road System
- Yazoo County Trophy Bucks
- Several Food Plot Areas
- Several Campsites
- Utilities Available



This is a RARE find in Yazoo County Mississippi! Properties like this don't come around often. This 203+/- acre tract is ground zero for Yazoo County Trophy Bucks! Located in the middle of the Tinsley oilfield, the property is **100% MATURE Hardwoods** with several food plot areas. There is an excellent road system throughout the property as there are five oil wells on maintained by Denbury. The timber on the property is outstanding and will provide excellent income for the investor. Utilities are available and there are several camp sites for your choosing. This property has not been hunted in decades, and is actually a wildlife paradise! If you are in the market for one of the best hunting and timber properties around, you better take a look at this one!



Call The Land Man today!

TOM SMITH, ALC, BROKER®

Tom@TomSmithLand.com

601.898.2772 office | 601.454.9397 cell



TomSmithLand.com

Information is believed to be accurate but not guaranteed.



TOM SMITH, ALC, BROKER®
Tom@TomSmithLand.com
601.898.2772 office | 601.454.9397 cell



TomSmithLand.com

Information is believed to be accurate but not guaranteed.



TOM SMITH, ALC, BROKER®
Tom@TomSmithLand.com
601.898.2772 office | 601.454.9397 cell



TomSmithLand.com

Information is believed to be accurate but not guaranteed.



TOM SMITH, ALC, BROKER®
Tom@TomSmithLand.com
601.898.2772 office | 601.454.9397 cell



TomSmithLand.com

Information is believed to be accurate but not guaranteed.



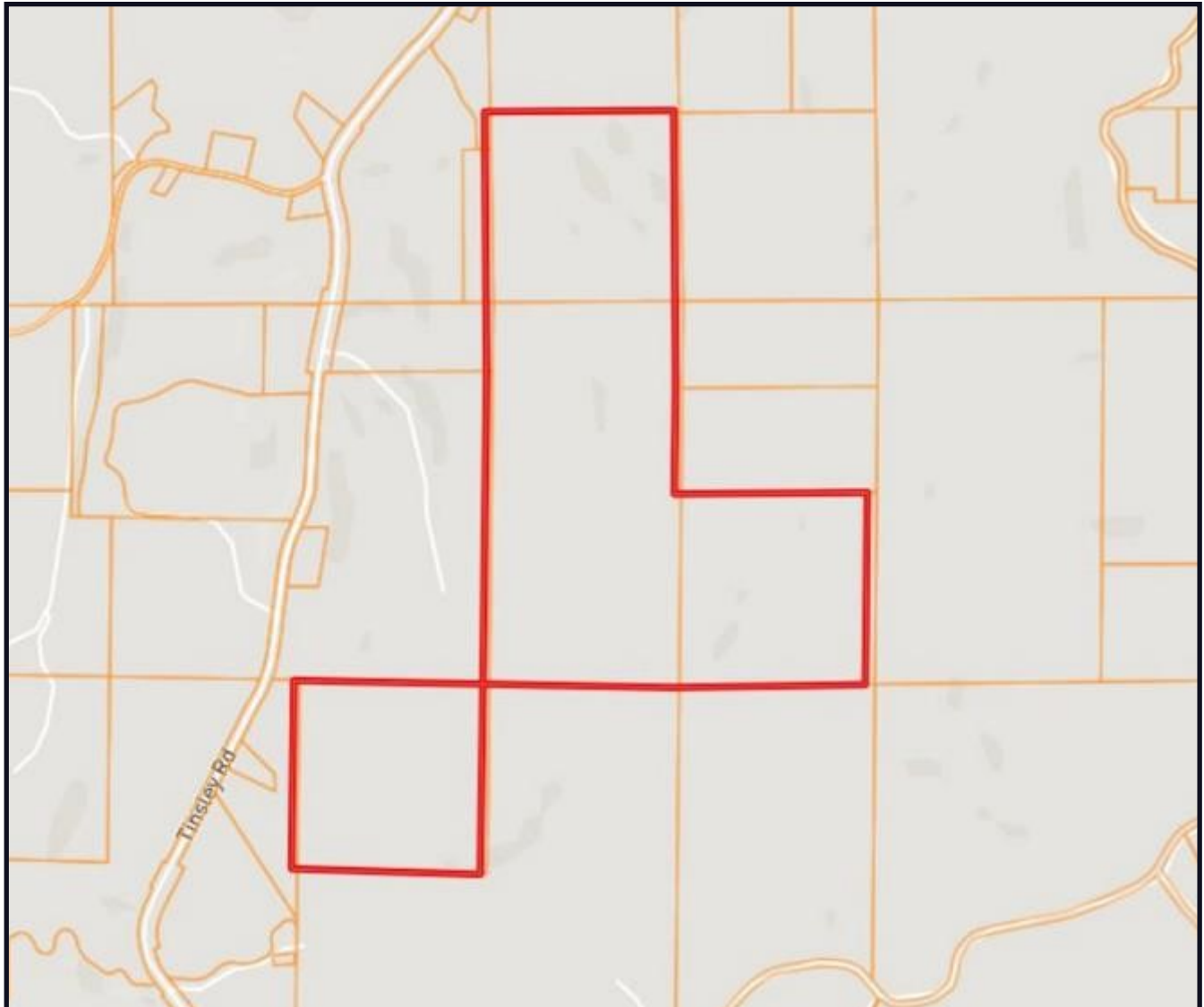
TOM SMITH, ALC, BROKER®
Tom@TomSmithLand.com
601.898.2772 office | 601.454.9397 cell



TomSmithLand.com

Information is believed to be accurate but not guaranteed.

Ownership Map



TOM SMITH, ALC, BROKER®
Tom@TomSmithLand.com
601.898.2772 office | 601.454.9397 cell



TomSmithLand.com

Information is believed to be accurate but not guaranteed.

Aerial Map



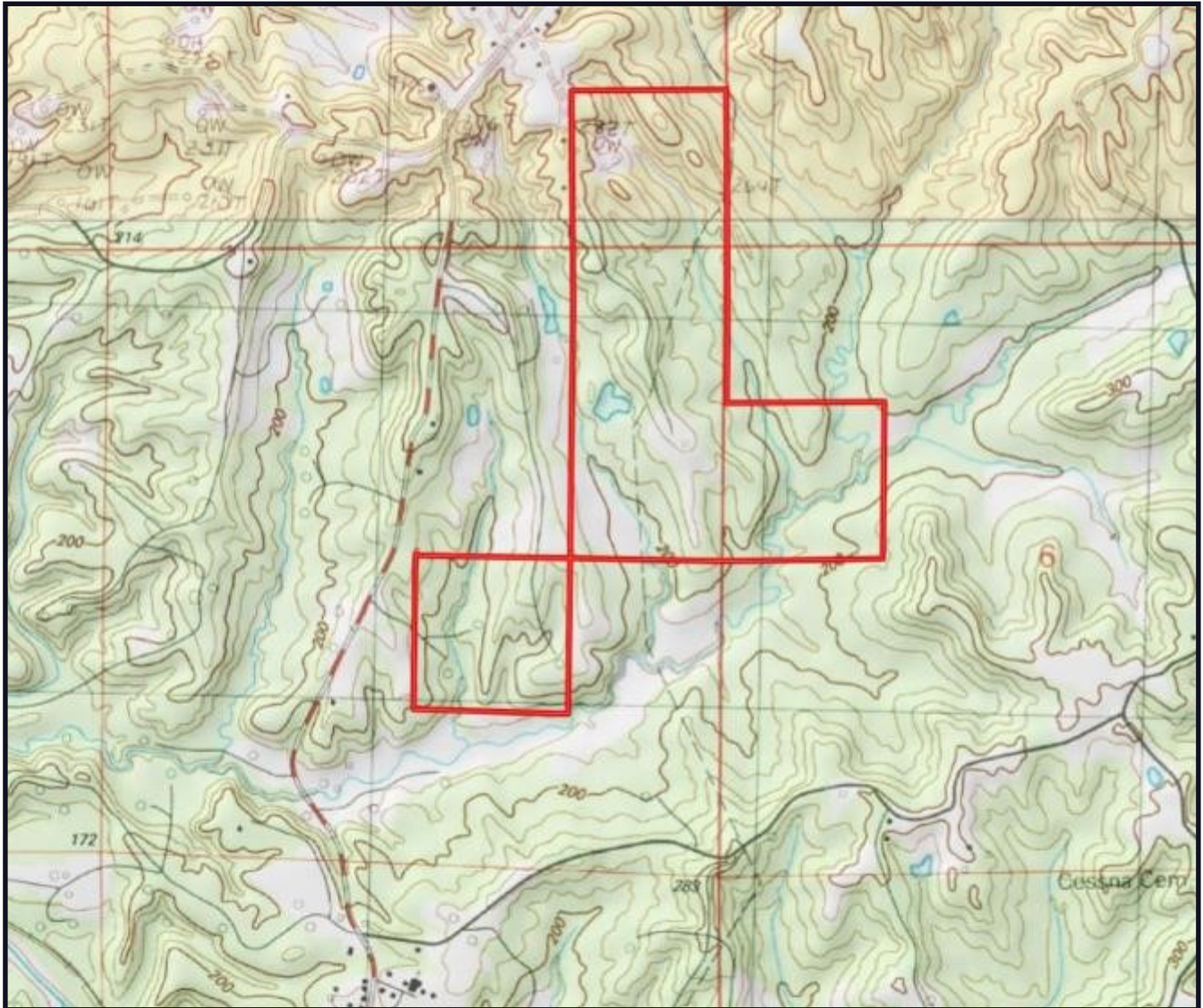
TOM SMITH, ALC, BROKER®
Tom@TomSmithLand.com
601.898.2772 office | 601.454.9397 cell



TomSmithLand.com

Information is believed to be accurate but not guaranteed.

Topo Map



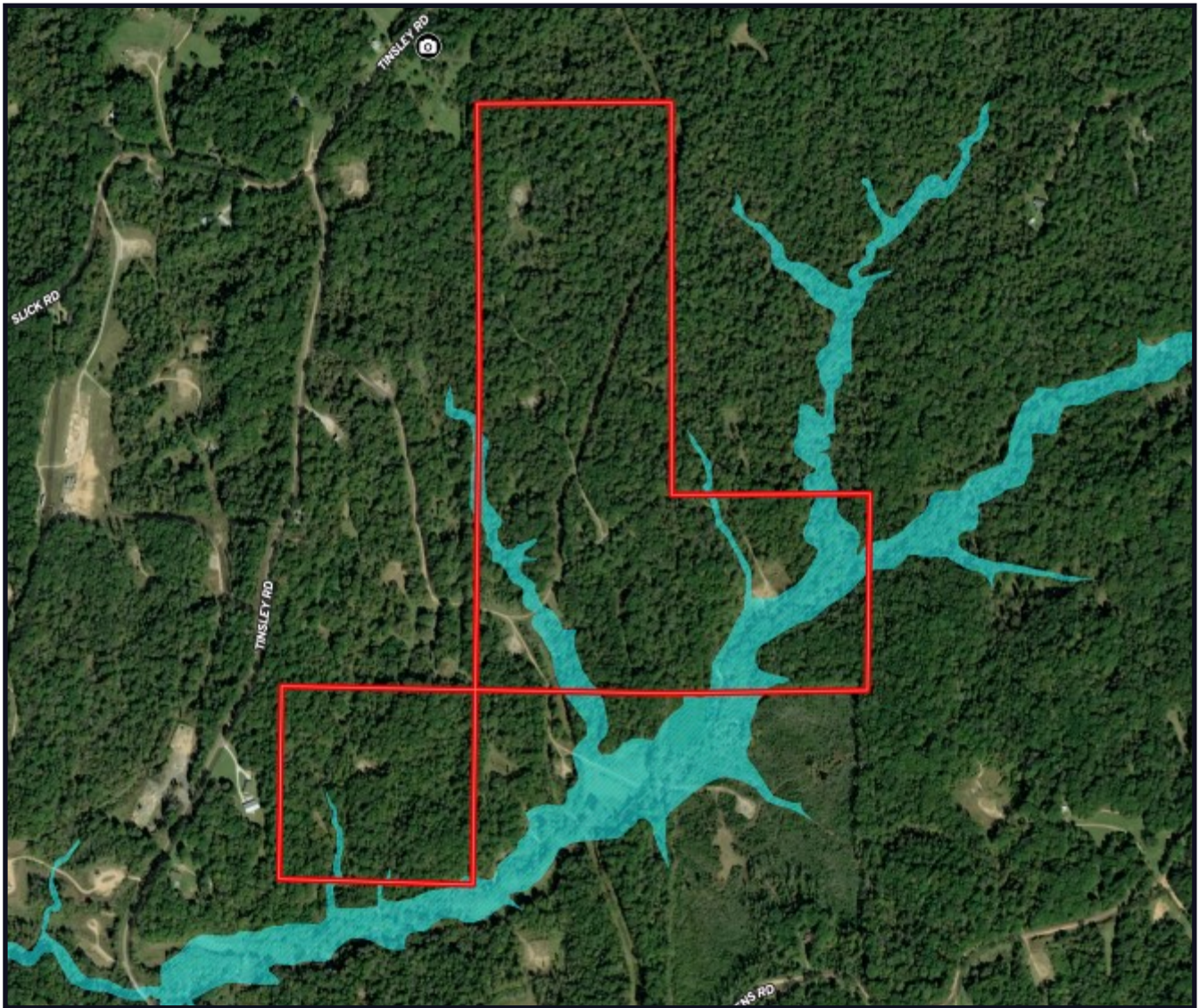
TOM SMITH, ALC, BROKER®
Tom@TomSmithLand.com
601.898.2772 office | 601.454.9397 cell



TomSmithLand.com

Information is believed to be accurate but not guaranteed.

Floodplain Map

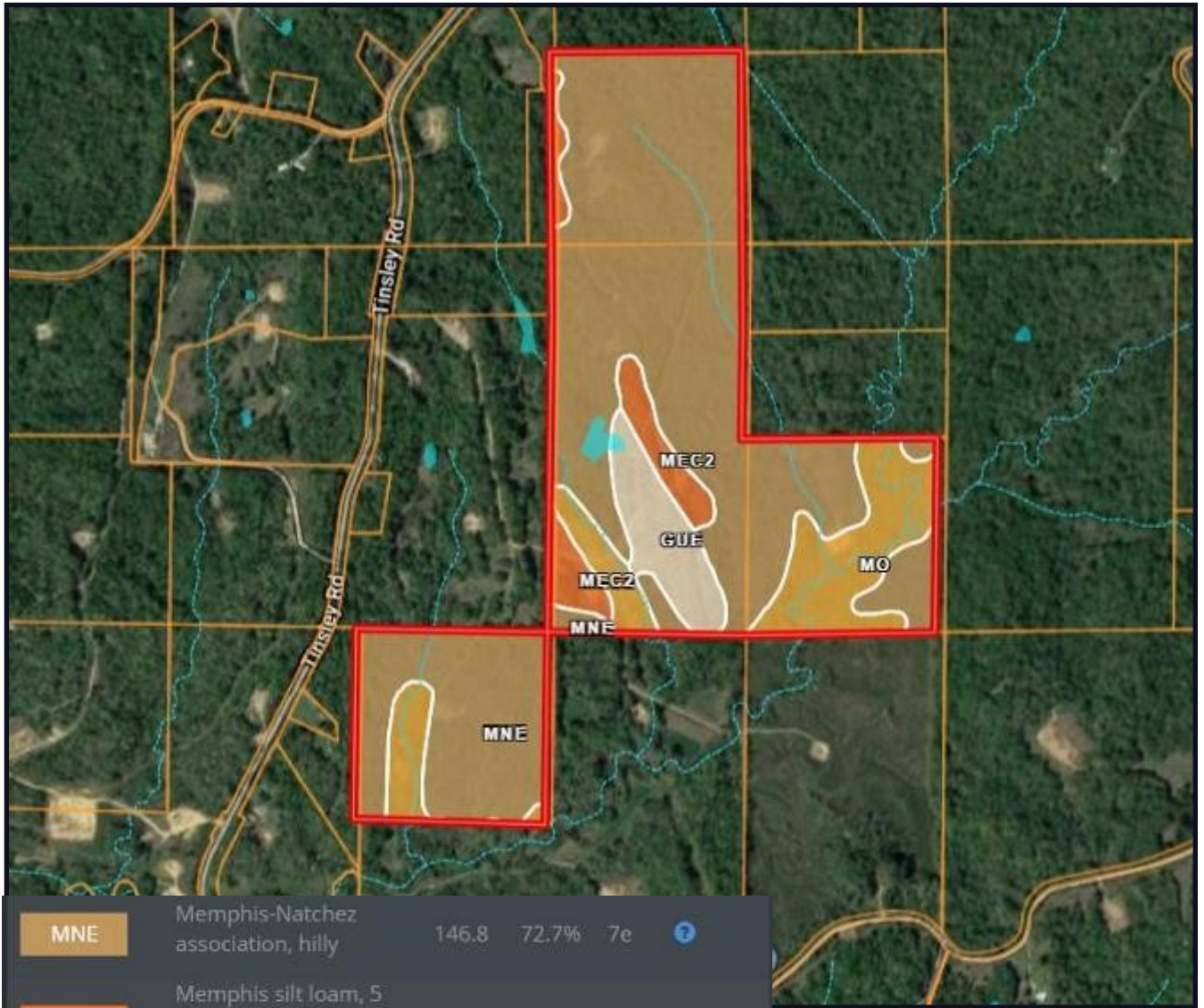


TOM SMITH, ALC, BROKER®
Tom@TomSmithLand.com
601.898.2772 office | 601.454.9397 cell



TomSmithLand.com

Information is believed to be accurate but not guaranteed.



MNE	Memphis-Natchez association, hilly	146.8	72.7%	7e	?
MeC2	Memphis silt loam, 5 to 8 percent slopes, eroded	12	5.9%	3e	?
GuE	Gullied land-Memphis complex, 5 to 30 percent slopes	12.3	6.1%	7e	?
Mo	Morganfield silt loam, occasionally flooded	30.9	15.3%	1	?

Soil Map



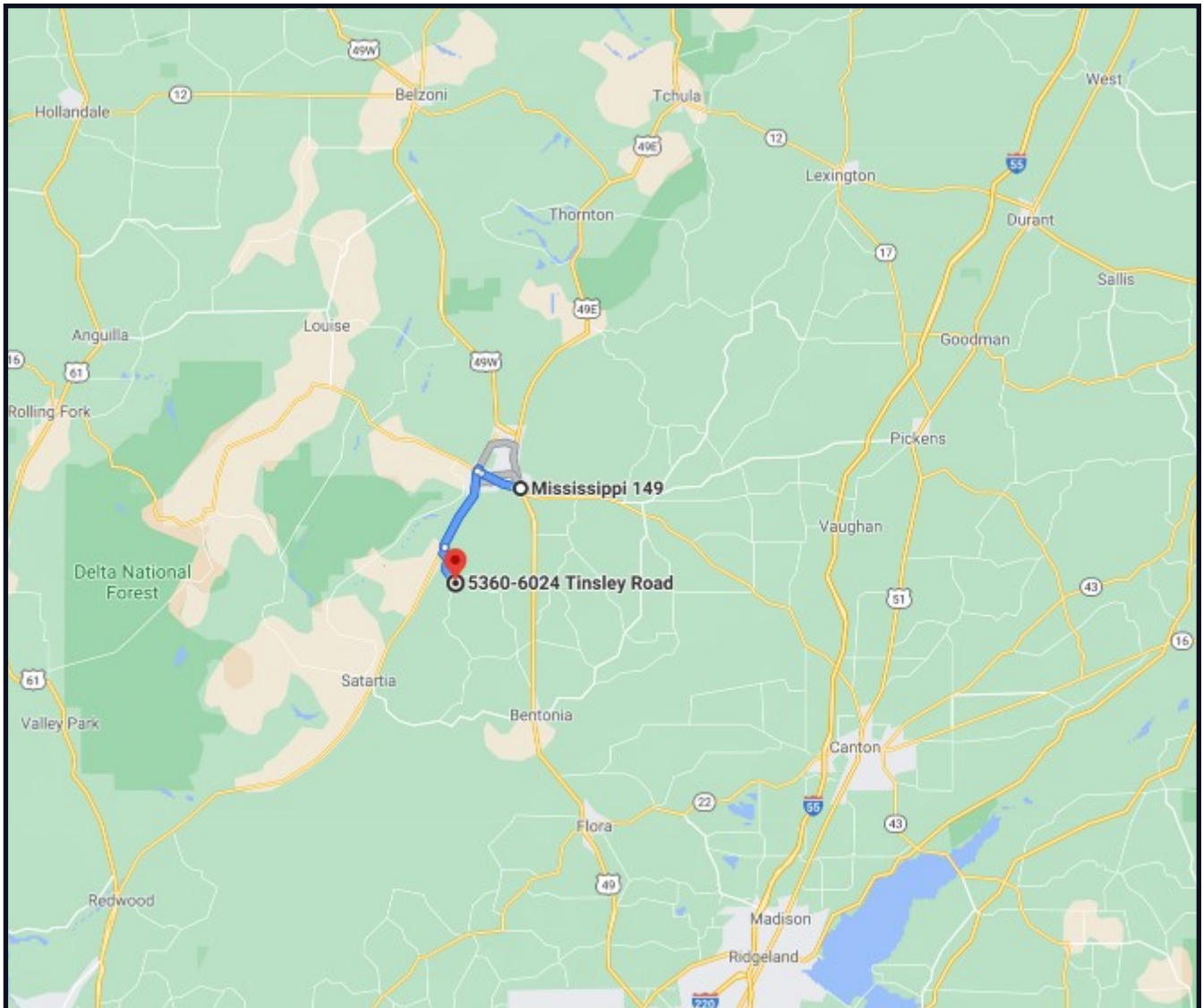
TOM SMITH, ALC, BROKER®
 Tom@TomSmithLand.com
 601.898.2772 office | 601.454.9397 cell



TomSmithLand.com

Information is believed to be accurate but not guaranteed.

Directional Map



Directions: From Hwy 49N in Yazoo County, travel west on Anding Oil City Rd for 4.5 mi. Turn right on Tinsley Rd and travel 4.2 miles. Property will be on your right. Entrance next to TSLH sign.

[GOOGLE MAP LINK](#)



Call The Land Man today!

TOM SMITH, ALC, BROKER®

Tom@TomSmithLand.com

601.898.2772 office | 601.454.9397 cell



TomSmithLand.com

Information is believed to be accurate but not guaranteed.