

2 Lots in The Woodlands of River Trace At Union Harbor Resort in Tishomingo County, MS



Take your pick of Lot 34 or Lot 35 at The Woodlands of River Trace at Union Harbor Resort in Tishomingo County, MS. These beautiful, wooded residential lots are located in a gated community with utilities and access to Pickwick Lake. Come build your dream home on one of these amazing lots! Lot 34 is 0.58 of an acre and Lot 35 is 0.58 acre. Call Tom today!!

Directions from the intersection of Hwy 25 and Hwy 172 in Iuka: Drive 1.5 miles and turn left on to Spring Street. Cross RR tracks and turn right on to Eastport Drive. Proceed 4.4 miles, turn left on CR 256 and drive for 0.5 miles. Turn right on CR 263, proceed 0.5 miles to Union Harbor and take first left on to Marina Trace Drive. Turn right on Woodland Drive.

Lots will be on the left. Address is Lot 34 and Lot 35 in Union Harbor Resort, Iuka, MS 38852



Call me today!

TOM WISEMAN, ASSOCIATE BROKER
Twiseman@TomSmithLand.com
662.268.6333 **office** | 662.317.0467 **cell**



TomSmithLandandHomes.com

Information is believed to be accurate but not guaranteed.

Lot 34 and 35 pictures



TOM WISEMAN, ASSOCIATE BROKER
Twiseman@TomSmithLand.com
662.268.6333 **office** | 662.317.0467 **cell**



TomSmithLandandHomes.com

Information is believed to be accurate but not guaranteed

PROPERTY MAP



Call me today!

TOM WISEMAN, ASSOCIATE BROKER
Twiseman@TomSmithLand.com
662.268.6333 **office** | 662.317.0467 **cell**



Expect More. Get More.

TomSmithLandandHomes.com

Information is believed to be accurate but not guaranteed.

AERIAL MAP



Lot 34 is .58 of an acre

Lot 35 is .58 of an acre

Call me today!

TOM WISEMAN, ASSOCIATE BROKER
Twiseman@TomSmithLand.com
662.268.6333 **office** | 662.317.0467 **cell**

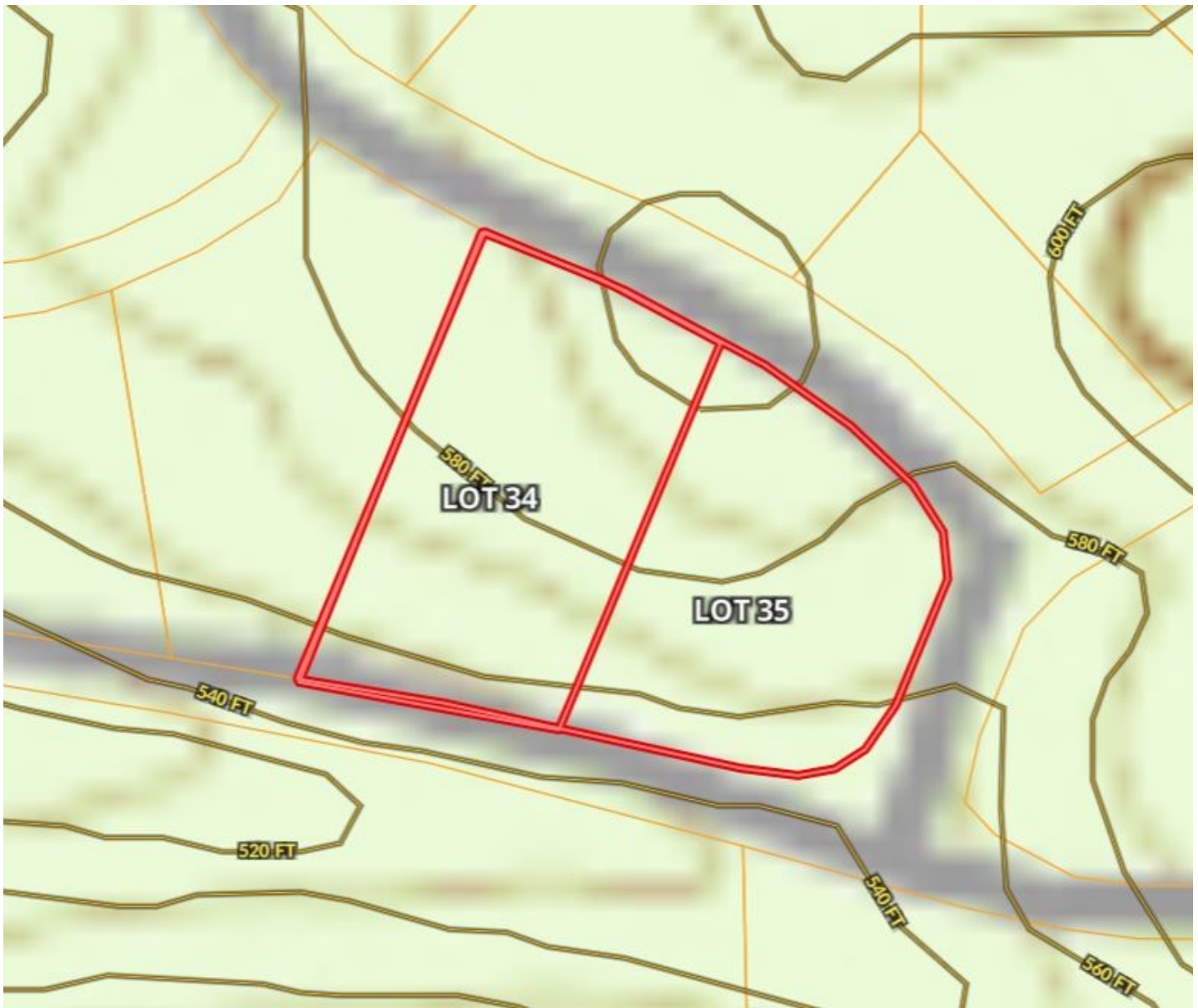


Expect More. Get More.

TomSmithLandandHomes.com

Information is believed to be accurate but not guaranteed.

TOPO MAP



Call me today!

TOM WISEMAN, ASSOCIATE BROKER
Twiseman@TomSmithLand.com
662.268.6333 **office** | 662.317.0467 **cell**

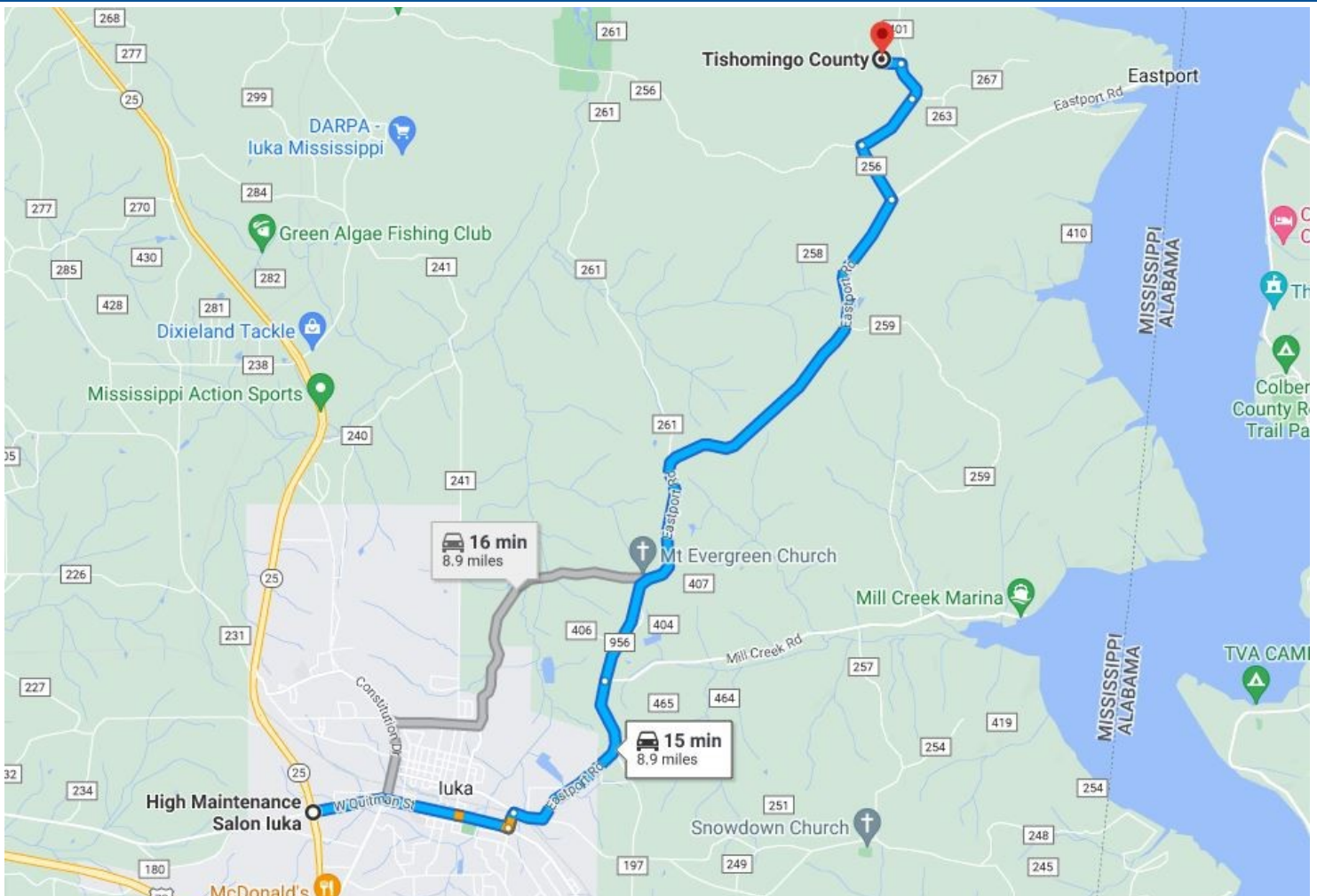


Expect More. Get More.

TomSmithLandandHomes.com

Information is believed to be accurate but not guaranteed.

DIRECTIONAL MAP



Directions from the intersection of Hwy 25 and Hwy 172 in Iuka: Drive 1.5 miles and turn left on to Spring Street. Cross RR tracks and turn right on to Eastport Drive. Proceed 4.4 miles, turn left on CR 256 and drive for 0.5 miles. Turn right on CR 263, proceed 0.5 miles to Union Harbor and take first left on to Marina Trace Drive. Turn right on Woodland Drive. Lots will be on the left. Address is Lot 34 and Lot 35 in Union Harbor Resort, Iuka, MS 38852

Call me today!

TOM WISEMAN, ASSOCIATE BROKER
Twiseman@TomSmithLand.com
662.268.6333 **office** | 662.317.0467 **cell**



Expect More. Get More.

TomSmithLandandHomes.com

Information is believed to be accurate but not guaranteed.