

2.05+/-Acre Homesite in Copiah County Surrounded by Wolf Hollow Golf Course \$39,900

This 2.05 surveyed acre homesite in Copiah County on Wolf Hollow Golf Course is what you have been looking for! This is a beautiful lot to build the perfect patio home overlooking the fairway on 3 sides of your property! You will be captivated by the luscious views of the rolling hills of this championship 18 hole golf course! Community water and electricity are close by. Call Trinity to find your new property today!



call me today!

TRINITY WEBB, REALTOR®
Trinity@TomSmithHomes.com
601.990.5070 office | 769.218.7860 cell



TomSmithLandandHomes.com

Information is believed to be accurate but not guaranteed.



TRINITY WEBB, REALTOR®
Trinity@TomSmithHomes.com
601.990.5070 office | 769.218.7860 cell

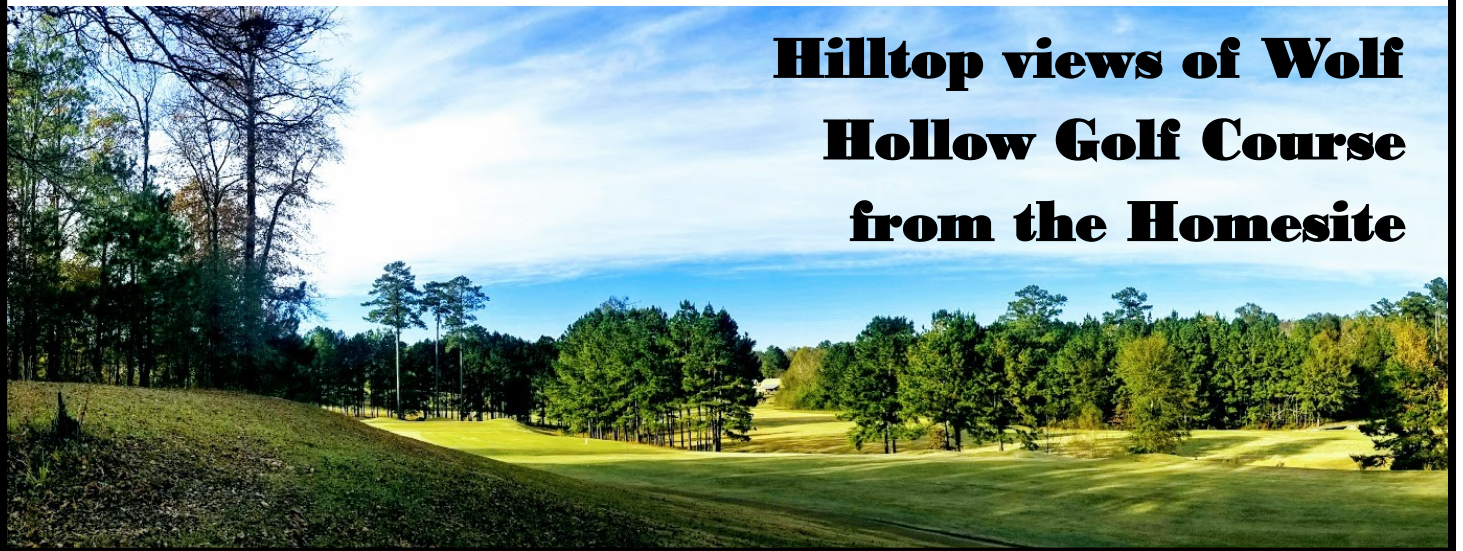
Expect More. Get More.



TomSmithLandandHomes.com

Information is believed to be accurate but not guaranteed.

Hilltop views of Wolf Hollow Golf Course from the Homesite



*These photos are of the Golf Course. These photos were taken of the golf course from the 2.05 acre lot.



TRINITY WEBB, REALTOR®
Trinity@TomSmithHomes.com
601.990.5070 office | 769.218.7860 cell

Expect More. Get More.

TomSmithLandandHomes.com

Information is believed to be accurate but not guaranteed.



GOLF COURSE AERIAL



Expect More. Get More.



TRINITY WEBB, REALTOR®
Trinity@TomSmithHomes.com
601.990.5070 office | 769.218.7860 cell

TomSmithLandandHomes.com

Information is believed to be accurate but not guaranteed.



OWNERSHIP MAP



TRINITY WEBB, REALTOR®
Trinity@TomSmithHomes.com
601.990.5070 office | 769.218.7860 cell



TomSmithLandandHomes.com

Information is believed to be accurate but not guaranteed.



2.05+/- Acres



31.692127
-90.387374

AERIAL MAP



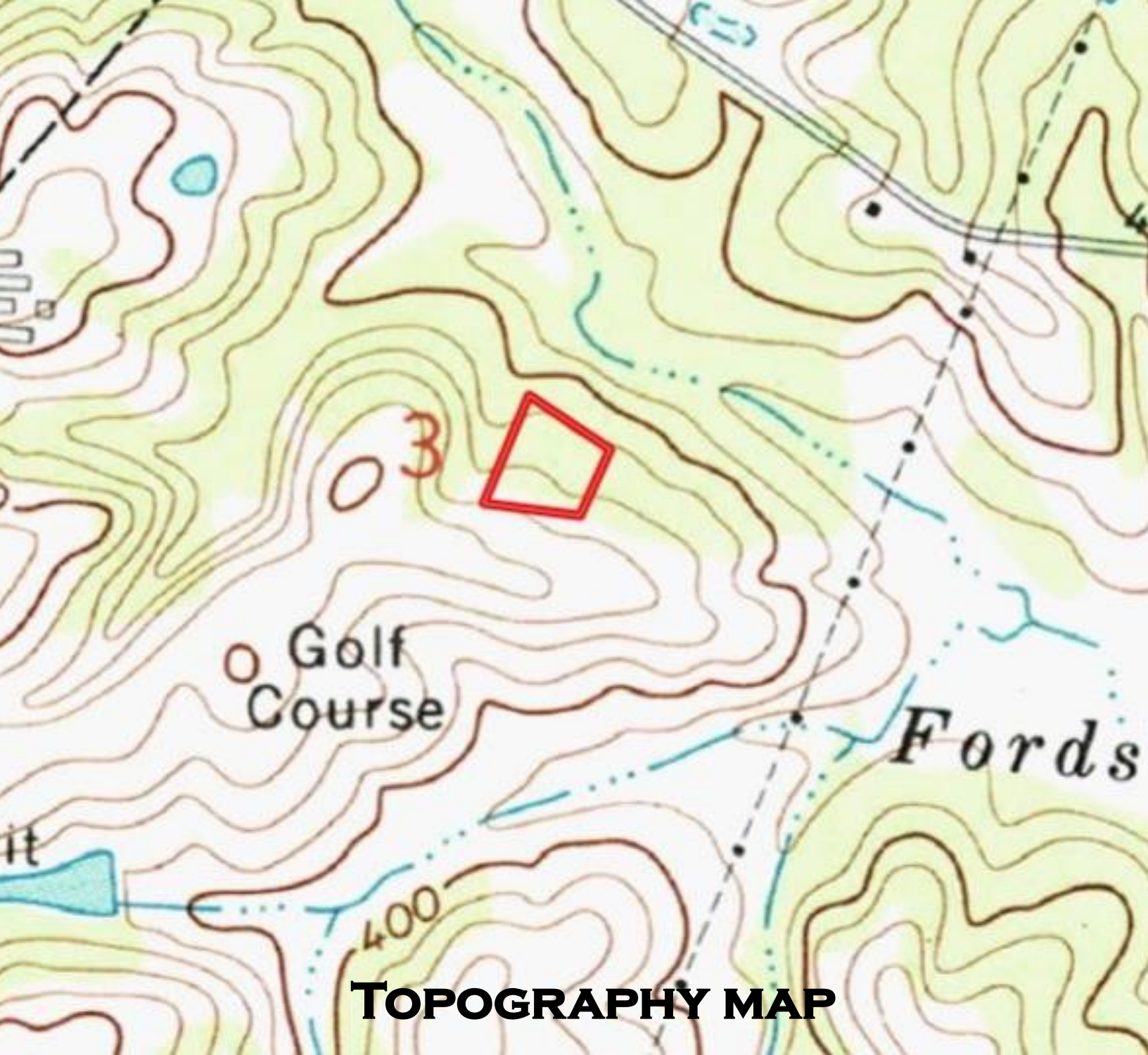
TRINITY WEBB, REALTOR®
Trinity@TomSmithHomes.com
601.990.5070 office | 769.218.7860 cell

Expect More. Get More.



TomSmithLandandHomes.com

Information is believed to be accurate but not guaranteed.



TOPOGRAPHY MAP



TRINITY WEBB, REALTOR®
Trinity@TomSmithHomes.com
601.990.5070 office | 769.218.7860 cell



TomSmithLandandHomes.com

Information is believed to be accurate but not guaranteed.

SOIL CODE	SOIL DESCRIPTION	ACRES	%	CAP
SmE	Smithdale sandy loam, 12 to 17 percent slopes	1.7	82.65	5w
PrB2	Providence silt loam, 2 to 5 percent slopes, eroded	0.4	17.35	2e



SOIL MAP



Expect More. Get More.

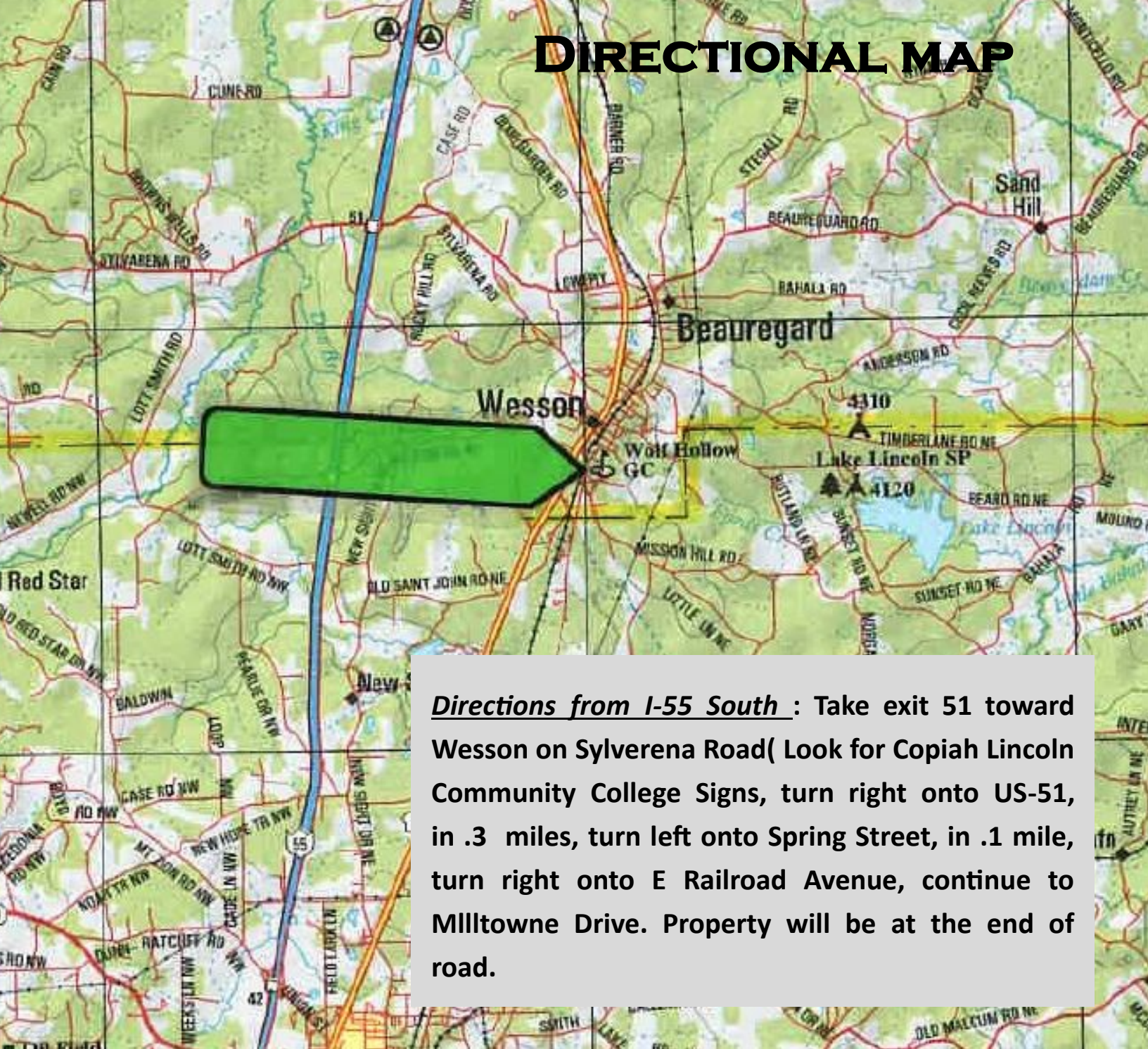


TRINITY WEBB, REALTOR®
 Trinity@TomSmithHomes.com
 601.990.5070 office | 769.218.7860 cell

TomSmithLandandHomes.com

Information is believed to be accurate but not guaranteed.

DIRECTIONAL MAP



Directions from I-55 South : Take exit 51 toward Wesson on Sylverena Road(Look for Copiah Lincoln Community College Signs, turn right onto US-51, in .3 miles, turn left onto Spring Street, in .1 mile, turn right onto E Railroad Avenue, continue to Milltowne Drive. Property will be at the end of road.



TRINITY WEBB, REALTOR®
Trinity@TomSmithHomes.com
601.990.5070 office | 769.218.7860 cell



TomSmithLandandHomes.com

Information is believed to be accurate but not guaranteed.