

2.05± ACRE HOMESITE IN COPIAH COUNTY, MS SURROUNDED BY WOLF HOLLOW GOLF COURSE

\$34,900



This 2.05 surveyed acre homesite in Copiah County on Wolf Hollow Golf Course is what you have been looking for! This is a beautiful lot to build the perfect estate/luxury home overlooking the fairway on 3 sides of your property! You will be captivated by the luscious views of the rolling hills of this championship 18 hole golf course! Community water and electricity are close by. Call Trinity to find your new property today!

Directions from I-55 South : Take Exit 51 toward Wesson on Sylverena Road, Look for Copiah Lincoln Community College Signs, turn right onto US-51, in .3 miles, turn left onto Spring Street, in .1 mile, turn right onto E Railroad Avenue, continue to Milltowne Drive. Property will be at the end of road.



Call me today!

TRINITYWEBB, REALTOR®
Trinity@TomSmithHomes.com
601.990.5070 **office** | 769.218.7860 **cell**



TomSmithLandandHomes.com

Information is believed to be accurate but not guaranteed.

Hilltop views of Wolf Hollow Golf Course from the Homesite



*These photos are of the Golf Course. These photos were taken of the golf course from the 2.05 acre lot.

Call me today!

TRINITY WEBB, REALTOR®

Trinity@TomSmithHomes.com

601.990.5070 **office** | 769.218.7860 **cell**



Expect More. Get More.

TomSmithLandandHomes.com

Information is believed to be accurate but not guaranteed.



Call me today!

TRINITYWEBB, REALTOR®
 Trinity@TomSmithHomes.com
 601.990.5070 **office** | 769.218.7860 **cell**



TomSmithLandandHomes.com

Information is believed to be accurate but not guaranteed.



GOLF COURSE AERIAL

Call me today!

TRINITY WEBB, REALTOR®

Trinity@TomSmithHomes.com
601.990.5070 **office** | 769.218.7860 **cell**



Expect More. Get More.

TomSmithLandandHomes.com

Information is believed to be accurate but not guaranteed.



2.05± ACRES

31.6921
-90.3875

[Interactive Map Link](#)

AERIAL MAP

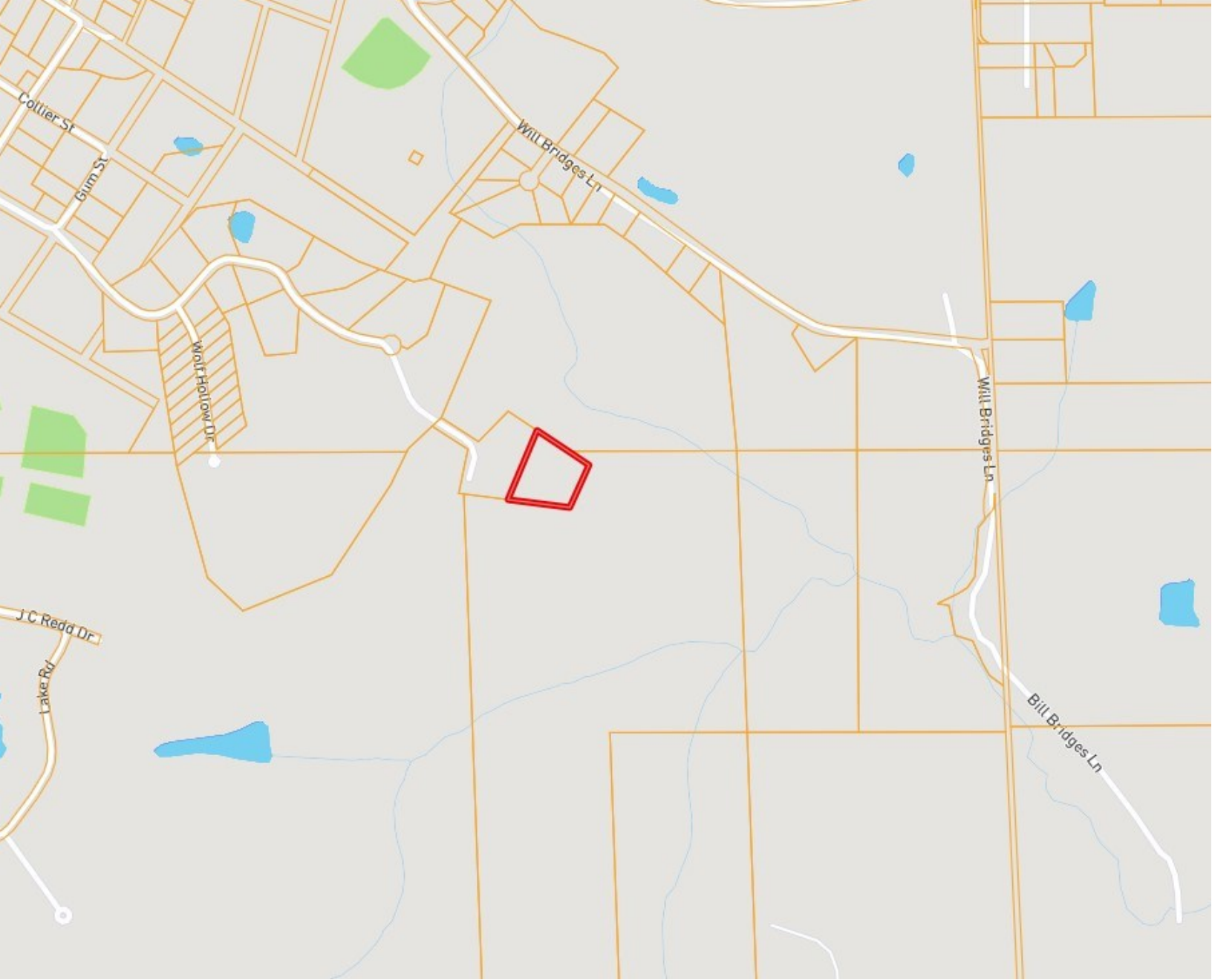
Call me today!

TRINITY WEBB, REALTOR®
Trinity@TomSmithHomes.com
601.990.5070 **office** | 769.218.7860 **cell**



TomSmithLandandHomes.com

Information is believed to be accurate but not guaranteed.



OWNERSHIP MAP



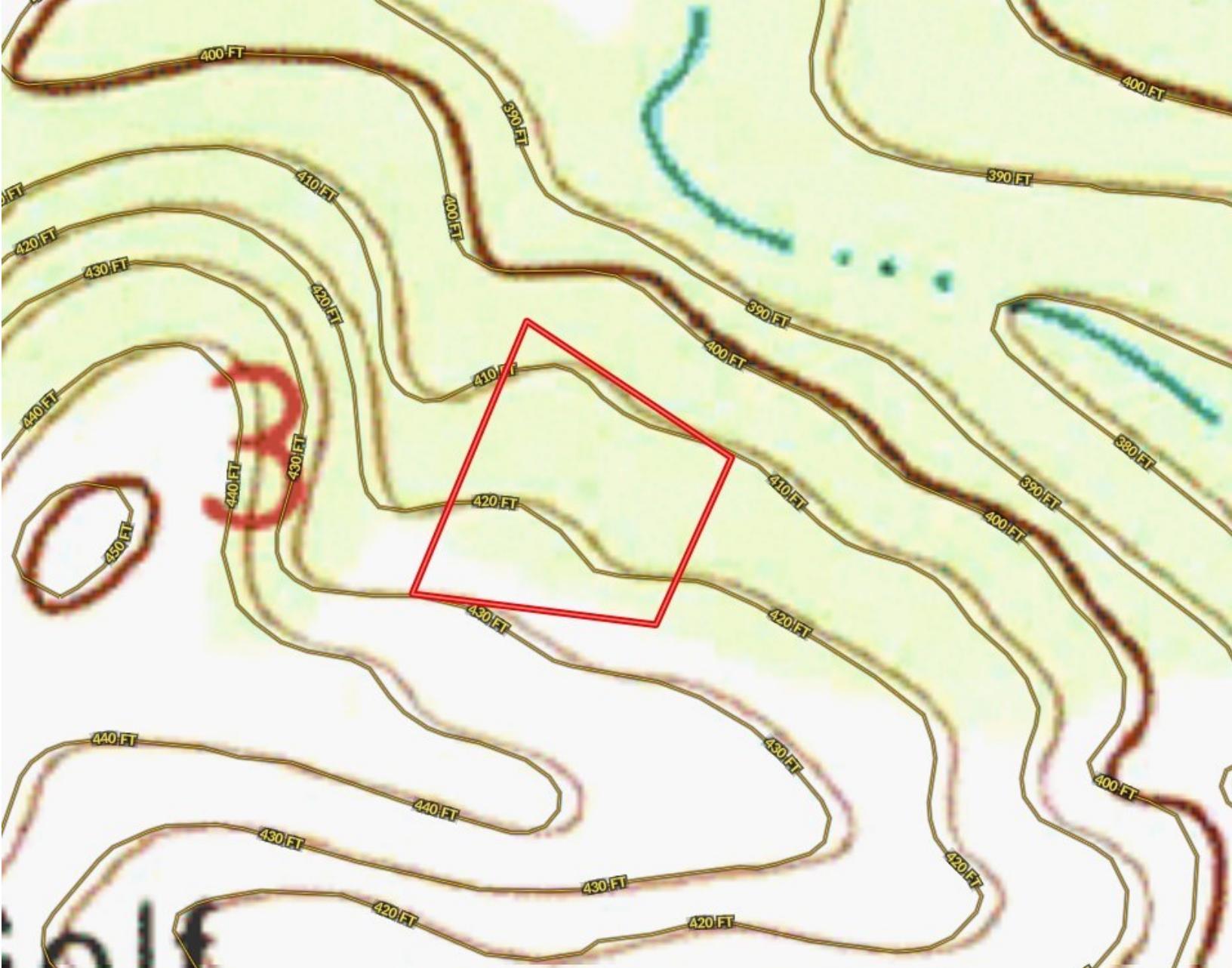
Call me today!

TRINITY WEBB, REALTOR®
Trinity@TomSmithHomes.com
601.990.5070 **office** | 769.218.7860 **cell**



TomSmithLandandHomes.com

Information is believed to be accurate but not guaranteed.



TOPO MAP



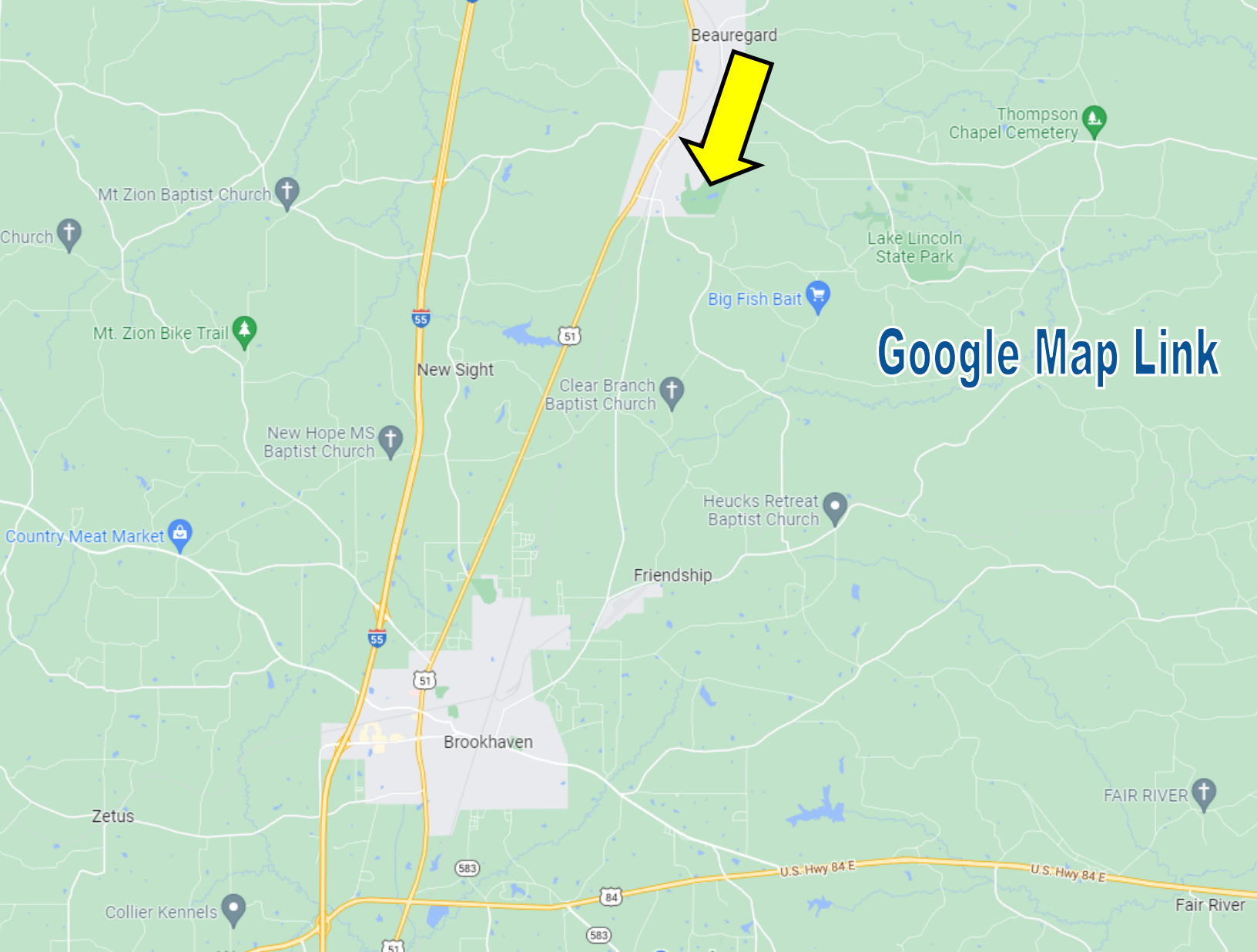
Call me today!

TRINITY WEBB, REALTOR®
Trinity@TomSmithHomes.com
601.990.5070 **office** | 769.218.7860 **cell**



TomSmithLandandHomes.com

Information is believed to be accurate but not guaranteed.



[Google Map Link](#)

DIRECTIONAL MAP

Directions from I-55 South : Take Exit 51 toward Wesson on Sylverena Road, Look for Copiah Lincoln Community College Signs, turn right onto US-51, in .3 miles, turn left onto Spring Street, in .1 mile, turn right onto E Railroad Avenue, continue to Milltowne Drive. Property will be at the end of road.



Call me today!

TRINITY WEBB, REALTOR®
 Trinity@TomSmithHomes.com
 601.990.5070 **office** | 769.218.7860 **cell**



TomSmithLandandHomes.com

Information is believed to be accurate but not guaranteed.